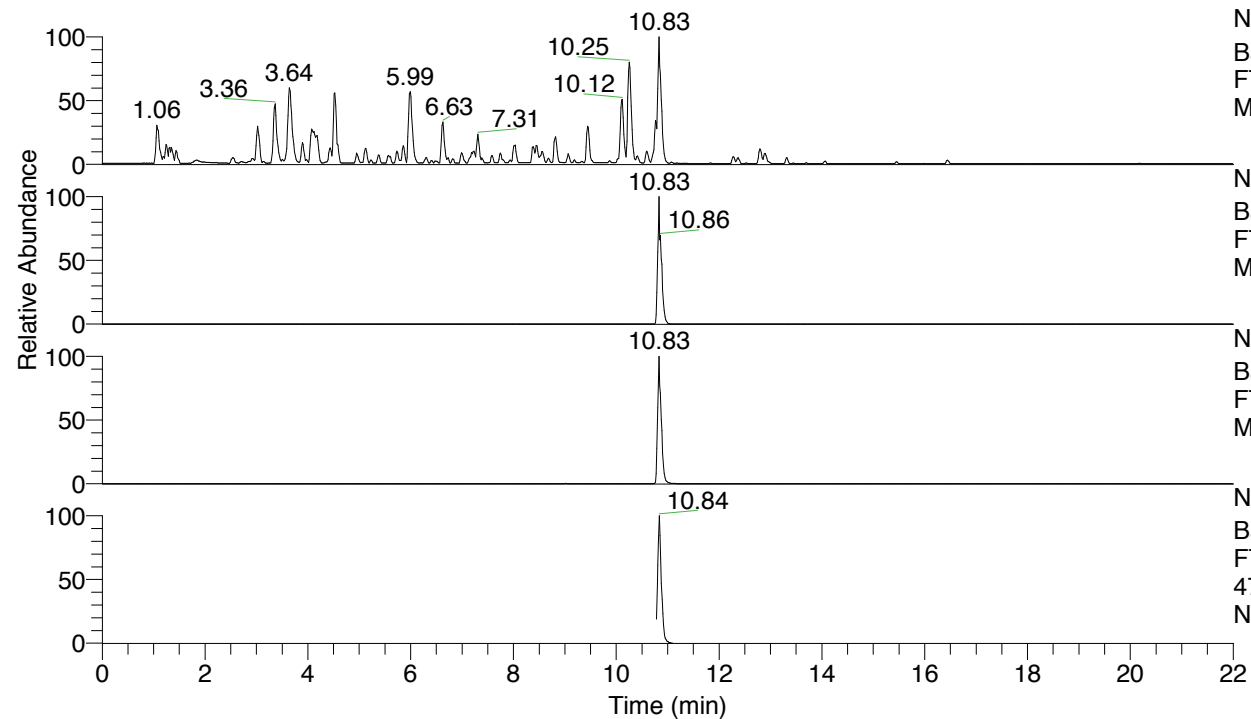


RT: 0.00 - 22.01



NL: 4.79E7  
 Base Peak m/z= 100.00000-1500.00000 F:  
 FTMS + p ESI Full ms [100.00-1500.00]  
 MS Nclavipes

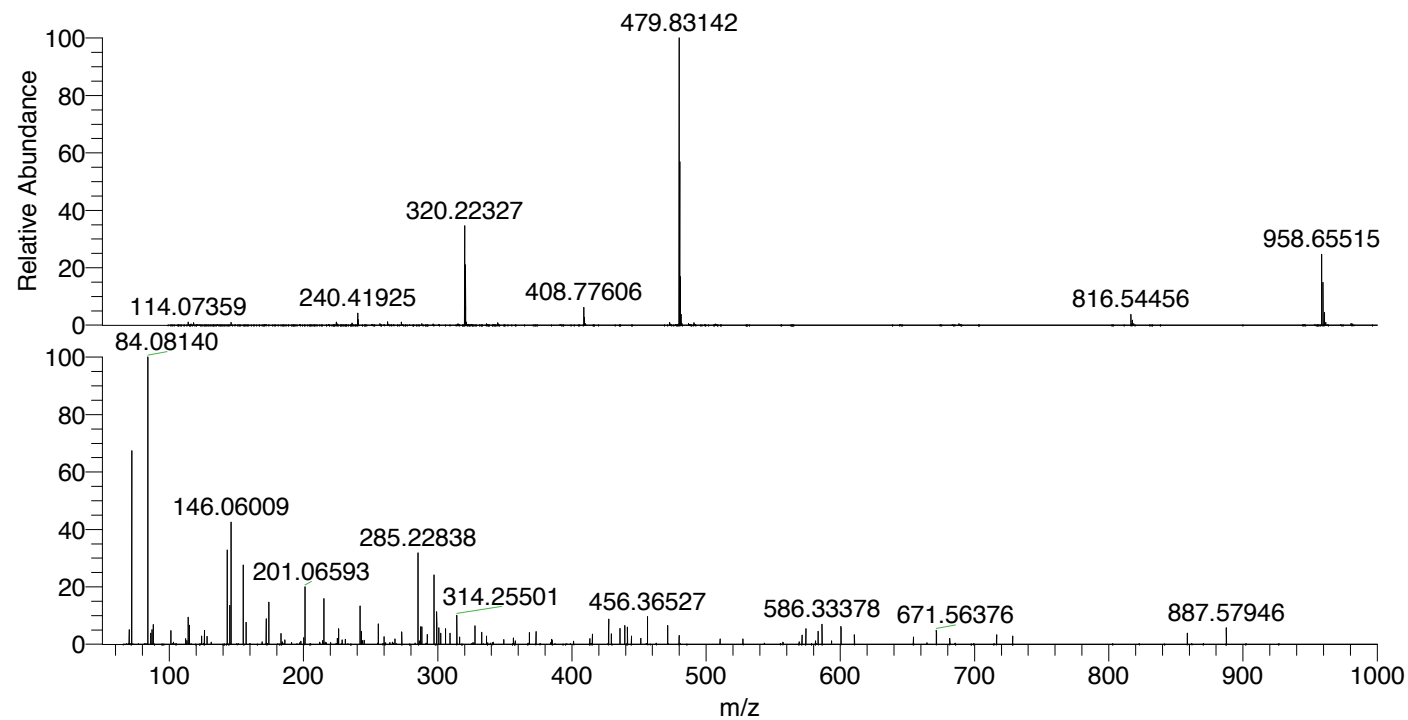
NL: 1.25E7  
 Base Peak m/z= 958.65179-958.66137 F:  
 FTMS + p ESI Full ms [100.00-1500.00]  
 MS Nclavipes

NL: 4.79E7  
 Base Peak m/z= 479.82980-479.83460 F:  
 FTMS + p ESI Full ms [100.00-1500.00]  
 MS Nclavipes

NL: 3.93E6  
 Base Peak m/z= 50.00000-1500.00000 F:  
 FTMS + p ESI d Full ms2  
 479.83@hcd35.00 [66.33-995.00] MS  
 Nclavipes

Nclavipes#4300-4340 RT: 10.80-10.89 AV: 8  
 F: FTMS + p ESI d Full ms2 479.83@hc ...  
 m/z= 50.00000-1000.00000

m/z	Intensity	Relative
70.06591	123438.8	5.12
72.08152	1592113.5	66.05
84.08140	2410453.0	100.00
86.09716	90905.5	3.77
87.05584	121889.5	5.06
88.03988	164884.0	6.84
101.10780	112743.0	4.68
114.09166	227152.2	9.42
115.05061	155032.3	6.43
126.09155	115212.0	4.78
143.11795	773599.4	32.09
145.13350	318039.5	13.19
146.06009	1004420.1	41.67
155.11792	664137.6	27.55
157.13364	178937.7	7.42
172.14443	207785.4	8.62
174.05497	347043.1	14.40
174.16062	98556.8	4.09
183.11342	87201.1	3.62
201.06593	471956.7	19.58
215.08156	375813.1	15.59
226.19192	127436.0	5.29
242.14970	323344.6	13.41
243.07707	105365.4	4.37
255.70973	170158.7	7.06
273.22917	104435.2	4.33
285.22838	747903.6	31.03
287.24439	143902.8	5.97
288.09777	143201.2	5.94
297.22836	567898.4	23.56
299.24365	272248.4	11.29
300.74984	135882.9	5.64
302.25562	89767.9	3.72
305.74128	130588.6	5.42
309.22824	90741.7	3.76
314.25501	238363.2	9.89
327.77252	150634.8	6.25
332.76541	97424.5	4.04
368.30266	95077.5	3.94
373.32896	102683.4	4.26
415.19808	82786.9	3.43
427.33914	205174.3	8.51
429.35525	86852.3	3.60
435.78134	130207.1	5.40
439.33915	157940.5	6.55
441.35409	143348.3	5.95
456.36527	231973.3	9.62
471.31765	155666.8	6.46
574.33453	128369.7	5.33
583.46523	105982.0	4.40
586.33378	166011.9	6.89
600.49056	147290.7	6.11
671.56376	113651.8	4.71
858.55246	94011.9	3.90
887.57946	134582.2	5.58



NL: 4.76E7  
 Nclavipes#4315 RT: 10.83  
 AV: 1 T: FTMS + p ESI  
 Full ms [100.00-1500.00]

NL: 2.35E6  
 Nclavipes#4297-4345 RT:  
 10.80-10.89 AV: 8 F:  
 FTMS + p ESI d Full ms2  
 479.83@hcd35.00  
 [66.33-995.00]

Nclavipes#4300-4340 RT: 10.80-10.89 AV: 8

F: FTMS + p ESI d Full ms2 479.83@hcd35.00 [66.33-995.00]

m/z= 50.00000-1000.00000

m/z	Intensity	Relative
70.06591	123438.8	5.12
72.08152	1592113.5	66.05
72.08545	30206.1	1.25
84.08140	2410453.0	100.00
86.09716	90905.5	3.77
87.05584	121889.5	5.06
88.03988	164884.0	6.84
101.10780	112743.0	4.68
103.12356	17159.4	0.71
112.07622	46404.8	1.93
113.10765	29563.4	1.23
114.09166	227152.2	9.42
115.05061	155032.3	6.43
124.07613	69001.4	2.86
126.09155	115212.0	4.78
128.10727	64770.4	2.69
131.11844	17978.9	0.75
143.11795	773599.4	32.09
145.13350	318039.5	13.19
146.06009	1004420.1	41.67
155.11792	664137.6	27.55
157.13364	178937.7	7.42
169.13386	20268.2	0.84
172.14443	207785.4	8.62
174.05497	347043.1	14.40
174.16062	98556.8	4.09
183.11342	87201.1	3.62
184.14485	19451.7	0.81
186.16042	36640.8	1.52
191.08192	13521.9	0.56
198.05528	24039.8	1.00
200.13985	55616.6	2.31
201.06593	471956.7	19.58
212.14001	16198.7	0.67
214.19183	30385.2	1.26
215.08156	375813.1	15.59
216.06571	16690.7	0.69
220.17397	13825.3	0.57
225.12366	49366.6	2.05

Nclavipes#4300-4340 RT: 10.80-10.89 AV: 8

F: FTMS + p ESI d Full ms2 479.83@hcd35.00 [66.33-995.00]

m/z= 50.00000-1000.00000

m/z	Intensity	Relative
226.19192	127436.0	5.29
228.68700	35422.8	1.47
231.21881	40069.3	1.66
242.14970	323344.6	13.41
243.07707	105365.4	4.37
243.21818	27485.5	1.14
244.06075	29597.4	1.23
245.23448	34110.5	1.42
255.70973	170158.7	7.06
260.10356	60717.3	2.52
261.08683	12827.3	0.53
264.22325	13185.2	0.55
266.18681	16612.9	0.69
268.20257	44776.8	1.86
273.22917	104435.2	4.33
285.22838	747903.6	31.03
286.23657	26881.4	1.12
287.24439	143902.8	5.97
288.09777	143201.2	5.94
292.23657	79888.5	3.31
297.22836	567898.4	23.56
299.24365	272248.4	11.29
300.74984	135882.9	5.64
302.25562	89767.9	3.72
305.74128	130588.6	5.42
309.22824	90741.7	3.76
314.25501	238363.2	9.89
316.27139	59943.7	2.49
326.25612	14664.2	0.61
327.77252	150634.8	6.25
332.76541	97424.5	4.04
336.28600	69294.8	2.87
341.27920	16920.5	0.70
349.25842	39367.3	1.63
356.30163	52472.8	2.18
357.77099	28555.4	1.18
368.30266	95077.5	3.94
373.32896	102683.4	4.26
384.25931	13492.4	0.56

Nclavipes#4300-4340 RT: 10.80-10.89 AV: 8

F: FTMS + p ESI d Full ms2 479.83@hcd35.00 [66.33-995.00]

m/z= 50.00000-1000.00000

m/z	Intensity	Relative
384.79474	41182.4	1.71
385.32845	35976.8	1.49
401.28865	24173.7	1.00
413.28717	45173.2	1.87
415.19808	82786.9	3.43
415.33956	14469.3	0.60
427.27058	38342.4	1.59
427.33914	205174.3	8.51
429.35525	86852.3	3.60
435.78134	130207.1	5.40
439.33915	157940.5	6.55
441.35409	143348.3	5.95
444.29595	66219.5	2.75
444.36464	55333.9	2.30
451.33842	49447.8	2.05
456.36527	231973.3	9.62
471.31765	155666.8	6.46
479.83198	72442.6	3.01
510.41366	42755.0	1.77
527.43893	43358.1	1.80
557.30664	17621.4	0.73
569.30854	20565.6	0.85
571.46490	76361.4	3.17
574.33453	128369.7	5.33
581.44977	28274.8	1.17
583.46523	105982.0	4.40
586.33378	166011.9	6.89
593.44779	28523.4	1.18
600.49056	147290.7	6.11
610.47418	79370.7	3.29
654.53587	61664.7	2.56
671.56376	113651.8	4.71
681.54673	48045.4	1.99
716.44329	77989.8	3.24
728.44481	66920.5	2.78
858.55246	94011.9	3.90
887.57946	134582.2	5.58