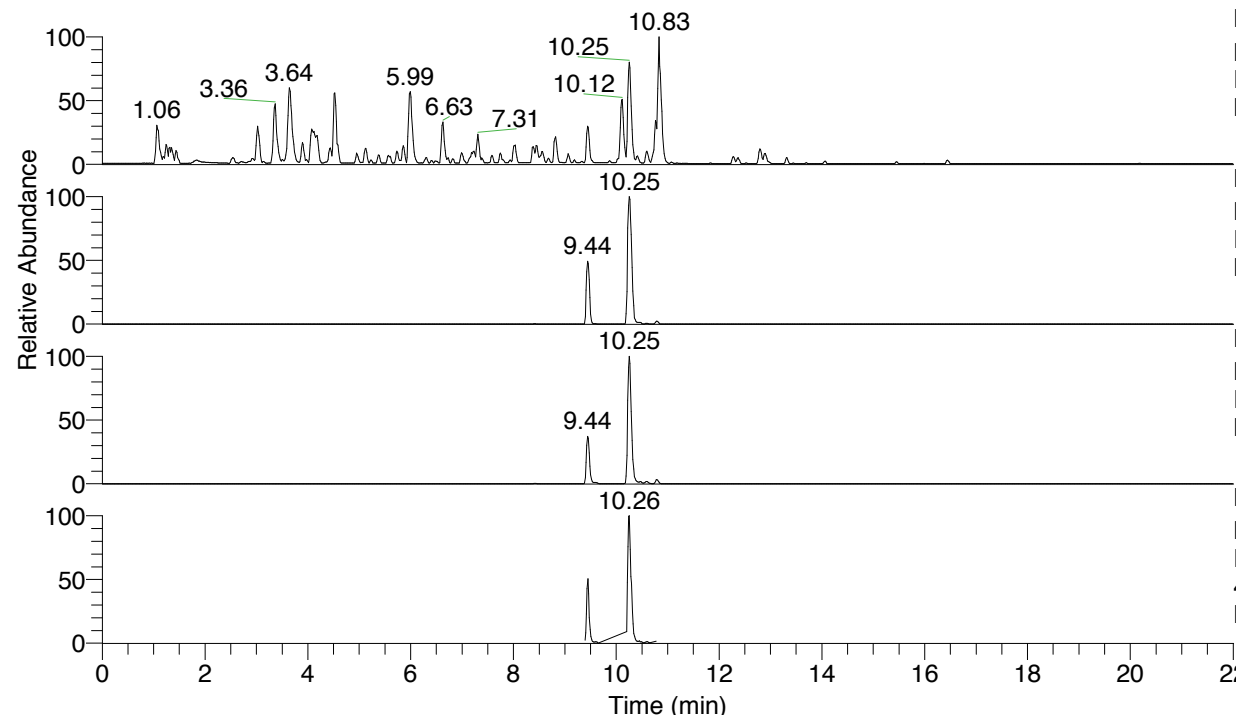


RT: 0.00 - 22.01

Nclavipes#4065-4106 RT: 10.22-10.31 AV:
 F: FTMS + p ESI d Full ms2 472.82@h ...
 m/z= 50.00000-1000.00000



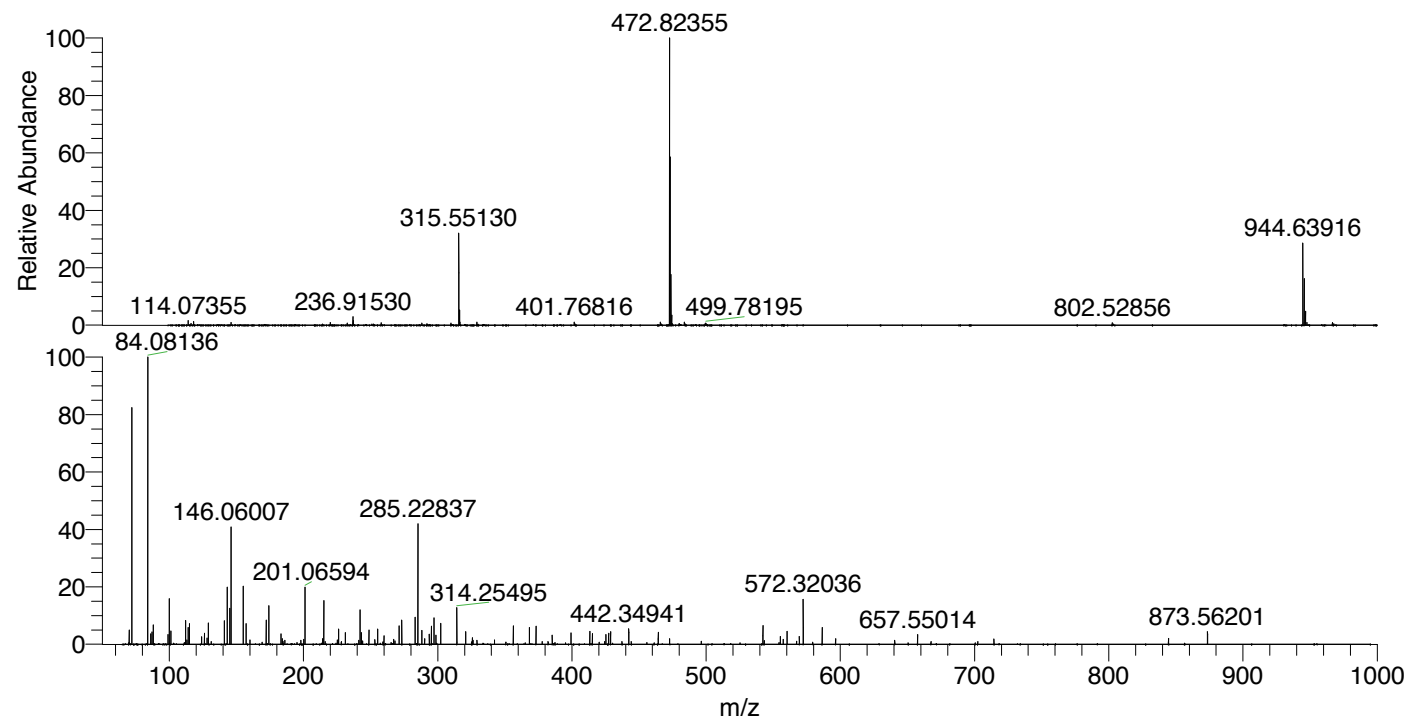
NL: 4.79E7
 Base Peak m/z= 100.00000-1500.00000 F:
 FTMS + p ESI Full ms [100.00-1500.00]
 MS Nclavipes

NL: 1.09E7
 Base Peak m/z= 944.63621-944.64565 F:
 FTMS + p ESI Full ms [100.00-1500.00]
 MS Nclavipes

NL: 3.84E7
 Base Peak m/z= 472.82202-472.82674 F:
 FTMS + p ESI Full ms [100.00-1500.00]
 MS Nclavipes

NL: 3.48E6
 Base Peak m/z= 50.00000-1500.00000 F:
 FTMS + p ESI d Full ms2
 472.82@hcd35.00 [65.67-985.00] MS
 Nclavipes

m/z	Intensity	Relative
70.06585	106245.1	4.86
72.08148	1737590.0	79.45
84.08136	2187158.0	100.00
86.09704	76714.3	3.51
87.05583	93824.5	4.29
88.03988	143104.1	6.54
100.07612	339537.0	15.52
101.10782	98668.3	4.51
112.07595	175483.6	8.02
114.09164	123870.3	5.66
115.05051	151459.6	6.92
126.09157	84028.1	3.84
129.10248	155722.9	7.12
141.10229	171286.9	7.83
143.11789	420221.7	19.21
145.13359	265874.5	12.16
146.06007	860019.1	39.32
155.11793	424340.0	19.40
157.13353	152409.3	6.97
172.14437	177374.7	8.11
174.05504	291563.7	13.33
174.16039	90692.0	4.15
201.06594	420010.2	19.20
215.08154	321108.4	14.68
226.19138	111585.9	5.10
231.21810	84904.1	3.88
242.14984	252735.4	11.56
243.07663	86584.2	3.96
248.70199	105832.8	4.84
255.21811	111635.3	5.10
271.21303	138626.3	6.34
273.22874	181032.9	8.28
283.21298	197842.7	9.05
285.22837	905785.0	41.41
288.09833	101999.5	4.66
295.21337	135049.7	6.17
297.22818	196449.7	8.98
302.25541	158145.8	7.23
314.25495	270893.2	12.39
320.76523	92692.4	4.24
356.30260	134565.4	6.15
368.30294	127896.4	5.85
373.32799	135134.5	6.18
399.27202	84342.3	3.86
413.32377	96015.3	4.39
415.19762	79394.2	3.63
427.33905	82846.0	3.79
428.77408	93214.0	4.26
442.34941	115196.3	5.27
464.31025	87084.4	3.98
542.30772	136669.4	6.25
560.31868	94496.8	4.32
572.32036	334366.0	15.29
586.47766	122436.9	5.60
873.56201	93682.2	4.28



NL: 3.65E7
 Nclavipes#4081 RT: 10.25
 AV: 1 T: FTMS + p ESI
 Full ms [100.00-1500.00]

NL: 2.10E6
 Nclavipes#4063-4107 RT:
 10.22-10.31 AV: 8 F:
 FTMS + p ESI d Full ms2
 472.82@hcd35.00
 [65.67-985.00]

Nclavipes#4065-4106 RT: 10.22-10.31 AV: 8

F: FTMS + p ESI d Full ms2 472.82@hcd35.00 [65.67-985.00]

m/z= 50.00000-1000.00000

m/z	Intensity	Relative
70.02954	13518.2	0.62
70.06585	106245.1	4.86
72.08148	1737590.0	79.45
84.08136	2187158.0	100.00
86.09704	76714.3	3.51
87.05583	93824.5	4.29
88.03988	143104.1	6.54
99.09219	72950.3	3.34
100.07612	339537.0	15.52
101.10782	98668.3	4.51
111.09228	12588.7	0.58
112.07595	175483.6	8.02
113.10756	32711.6	1.50
114.09164	123870.3	5.66
115.05051	151459.6	6.92
124.07603	54784.0	2.50
126.09157	84028.1	3.84
128.10708	46911.4	2.14
129.10248	155722.9	7.12
131.11796	21585.1	0.99
141.10229	171286.9	7.83
143.11789	420221.7	19.21
145.13359	265874.5	12.16
146.06007	860019.1	39.32
155.11793	424340.0	19.40
157.13353	152409.3	6.97
160.14443	31687.4	1.45
169.13406	15697.1	0.72
172.14437	177374.7	8.11
174.05504	291563.7	13.33
174.16039	90692.0	4.15
183.11295	75747.1	3.46
184.14445	41414.5	1.89
184.65473	23317.5	1.07
186.16057	30565.3	1.40
195.14899	13479.8	0.62
198.05494	28442.8	1.30
200.13966	36285.9	1.66
201.06594	420010.2	19.20

Nclavipes#4065-4106 RT: 10.22-10.31 AV: 8

F: FTMS + p ESI d Full ms2 472.82@hcd35.00 [65.67-985.00]

m/z= 50.00000-1000.00000

m/z	Intensity	Relative
214.19167	41868.4	1.91
215.08154	321108.4	14.68
216.06585	20514.3	0.94
225.12344	32869.3	1.50
226.15502	18887.6	0.86
226.19138	111585.9	5.10
228.17031	20467.3	0.94
231.21810	84904.1	3.88
241.20293	29036.8	1.33
242.14984	252735.4	11.56
243.07663	86584.2	3.96
243.21819	22349.7	1.02
244.06015	24544.9	1.12
248.70199	105832.8	4.84
253.20227	33947.5	1.55
255.21811	111635.3	5.10
259.17707	18010.7	0.82
260.10281	61439.4	2.81
265.20209	13404.6	0.61
267.21801	36819.5	1.68
268.20222	25660.4	1.17
271.21303	138626.3	6.34
273.22874	181032.9	8.28
283.21298	197842.7	9.05
285.22837	905785.0	41.41
288.09833	101999.5	4.66
290.22108	41255.5	1.89
293.74207	75642.5	3.46
295.21337	135049.7	6.17
297.22818	196449.7	8.98
298.73416	66122.0	3.02
302.25541	158145.8	7.23
314.25495	270893.2	12.39
320.76523	92692.4	4.24
325.22350	16651.1	0.76
325.75720	49701.3	2.27
326.25543	30086.5	1.38
329.27806	28748.8	1.31
342.25002	32103.1	1.47

Nclavipes#4065-4106 RT: 10.22-10.31 AV: 8

F: FTMS + p ESI d Full ms2 472.82@hcd35.00 [65.67-985.00]

m/z= 50.00000-1000.00000

m/z	Intensity	Relative
350.76488	16256.1	0.74
356.30260	134565.4	6.15
368.30294	127896.4	5.85
373.32799	135134.5	6.18
377.78664	20058.7	0.92
382.24498	21456.3	0.98
385.32820	68361.6	3.13
387.27097	14616.0	0.67
395.31377	11434.3	0.52
399.27202	84342.3	3.86
413.32377	96015.3	4.39
415.19762	79394.2	3.63
415.33766	22284.2	1.02
420.25865	16094.8	0.74
424.33867	19852.3	0.91
425.32331	71114.3	3.25
427.33905	82846.0	3.79
428.77408	93214.0	4.26
437.28365	19780.4	0.90
442.34941	115196.3	5.27
444.22509	20604.4	0.94
455.79696	14206.8	0.65
464.31025	87084.4	3.98
472.82370	40368.3	1.85
496.39620	22073.5	1.01
542.30772	136669.4	6.25
543.29249	26204.5	1.20
554.30534	12176.0	0.56
555.29219	58978.8	2.70
557.44917	35420.2	1.62
560.31868	94496.8	4.32
567.43267	22276.9	1.02
569.44902	58512.3	2.68
572.32036	334366.0	15.29
579.43374	15780.1	0.72
586.47766	122436.9	5.60
596.46129	41557.4	1.90
640.51916	30643.8	1.40
650.50424	11661.0	0.53

Nclavipes#4065-4106 RT: 10.22-10.31 AV: 8

F: FTMS + p ESI d Full ms2 472.82@hcd35.00 [65.67-985.00]

m/z= 50.00000-1000.00000

m/z	Intensity	Relative
657.55014	70840.8	3.24
667.53162	20662.5	0.94
700.51490	11235.6	0.51
702.42517	20270.0	0.93
714.42734	38313.9	1.75
844.53497	44011.0	2.01
873.56201	93682.2	4.28