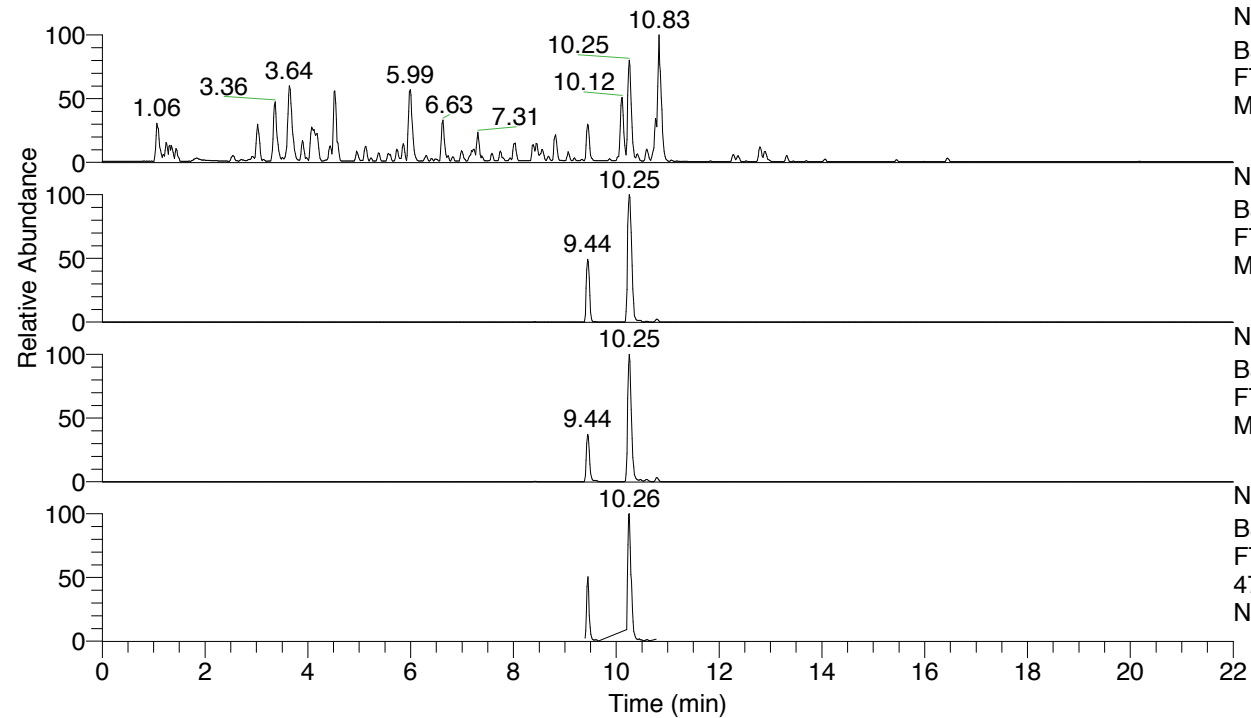


RT: 0.00 - 22.01



NL: 4.79E7
 Base Peak m/z= 100.00000-1500.00000 F:
 FTMS + p ESI Full ms [100.00-1500.00]
 MS Nclavipes

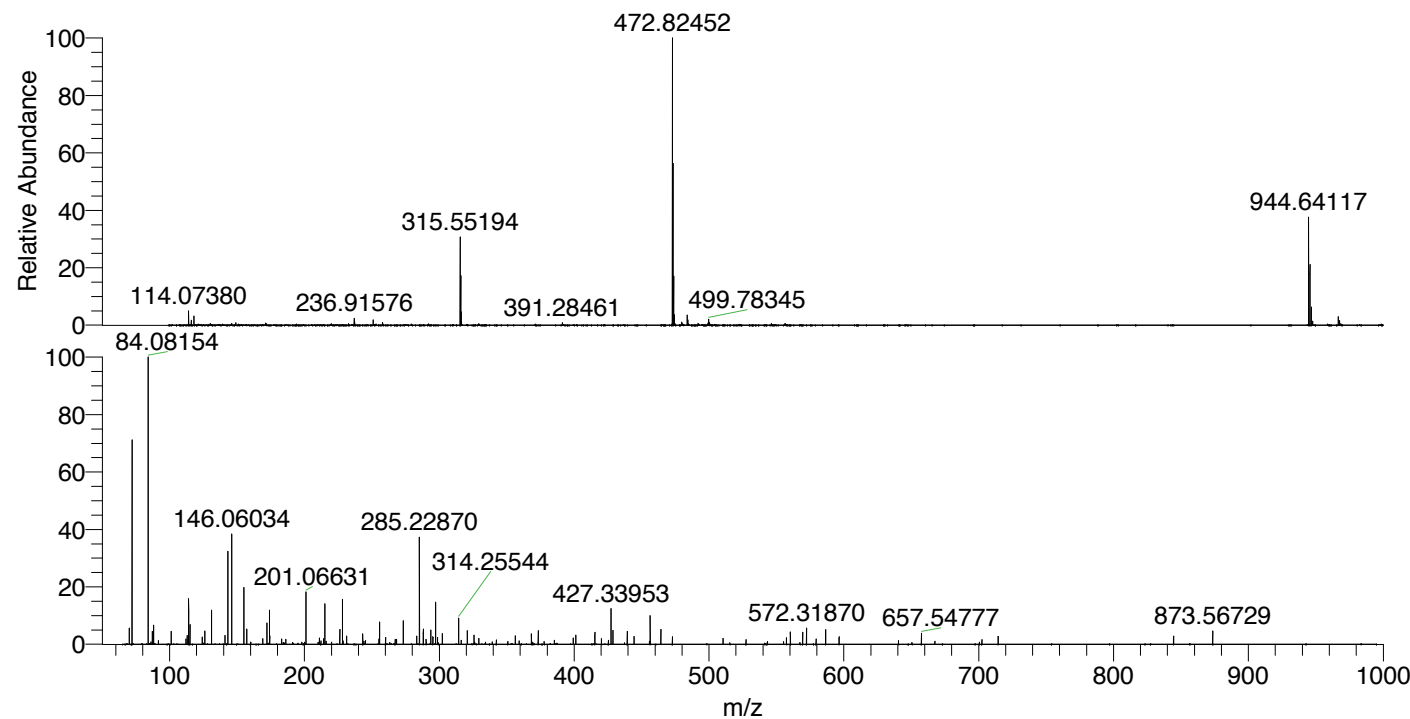
NL: 1.09E7
 Base Peak m/z= 944.63621-944.64565 F:
 FTMS + p ESI Full ms [100.00-1500.00]
 MS Nclavipes

NL: 3.84E7
 Base Peak m/z= 472.82202-472.82674 F:
 FTMS + p ESI Full ms [100.00-1500.00]
 MS Nclavipes

NL: 3.48E6
 Base Peak m/z= 50.00000-1500.00000 F:
 FTMS + p ESI d Full ms2
 472.82@hcd35.00 [65.67-985.00] MS
 Nclavipes

Nclavipes#3746-3776 RT: 9.42-9.49 AV: 6
 F: FTMS + p ESI d Full ms2 472.82@h ...
 m/z= 50.00000-1000.00000

m/z	Intensity	Relative
70.06599	56425.3	5.38
72.08160	698237.7	66.57
84.08153	1048879.1	100.00
87.05605	45484.7	4.34
88.04009	66068.7	6.30
101.10791	45052.6	4.30
113.10788	30485.0	2.91
114.09188	164141.9	15.65
115.05070	69367.8	6.61
124.07617	26731.6	2.55
126.09186	49253.1	4.70
131.11822	119907.6	11.43
141.10261	31699.1	3.02
143.11816	325196.1	31.00
146.06032	385082.9	36.71
155.11818	202517.5	19.31
157.13387	53460.9	5.10
172.14483	75799.5	7.23
174.05541	122090.8	11.64
174.16065	31155.1	2.97
201.06624	185449.2	17.68
215.08194	143629.6	13.69
226.19186	51810.4	4.94
228.13469	158039.2	15.07
231.21861	28091.9	2.68
243.07679	35936.9	3.43
255.71054	77846.3	7.42
273.22904	85168.6	8.12
283.21345	28277.3	2.70
285.22876	374181.8	35.67
288.09815	54779.2	5.22
293.74273	50801.7	4.84
297.22897	146254.1	13.94
302.25523	36291.6	3.46
314.25539	89661.7	8.55
320.76598	48394.7	4.61
325.75830	30838.6	2.94
356.30324	30830.0	2.94
368.30256	35370.9	3.37
373.32872	47088.6	4.49
401.18278	30898.6	2.95
415.34008	43611.3	4.16
427.33971	124408.7	11.86
428.77389	47585.8	4.54
439.34014	46101.7	4.40
456.36673	99857.8	9.52
464.31149	52012.2	4.96
560.32037	43444.7	4.14
569.45145	40503.3	3.86
572.31915	55941.4	5.33
586.47817	53101.1	5.06
657.54790	37139.3	3.54
714.42719	26210.2	2.50
844.53260	27438.0	2.62
873.56730	45574.0	4.35



NL: 1.39E7
 Nclavipes#3757 RT: 9.44
 AV: 1 T: FTMS + p ESI
 Full ms [100.00-1500.00]

NL: 1.13E6
 Nclavipes#3743-3775 RT:
 9.42-9.48 AV: 5 F: FTMS
 + p ESI d Full ms2
 472.82@hcd35.00
 [65.67-985.00]

Nclavipes#3746-3776 RT: 9.42-9.49 AV: 6

F: FTMS + p ESI d Full ms2 472.82@hcd35.00 [65.67-985.00]

m/z= 50.00000-1000.00000

m/z	Intensity	Relative
70.06599	56425.3	5.38
72.08160	698237.7	66.57
84.08153	1048879.1	100.00
86.09715	7536.4	0.72
87.05605	45484.7	4.34
88.04009	66068.7	6.30
91.75208	14792.6	1.41
101.10791	45052.6	4.30
112.07634	18776.6	1.79
113.10788	30485.0	2.91
114.09188	164141.9	15.65
115.05070	69367.8	6.61
124.07617	26731.6	2.55
126.09186	49253.1	4.70
131.11822	119907.6	11.43
141.10261	31699.1	3.02
143.11816	325196.1	31.00
146.06032	385082.9	36.71
155.11818	202517.5	19.31
157.13387	53460.9	5.10
160.14482	7219.7	0.69
169.09753	20441.2	1.95
169.13398	9960.8	0.95
172.14483	75799.5	7.23
174.05541	122090.8	11.64
174.16065	31155.1	2.97
183.11343	17522.8	1.67
184.14502	6325.4	0.60
184.65529	5561.5	0.53
186.12403	16029.5	1.53
186.16040	12044.9	1.15
191.08155	6286.0	0.60
198.05548	6689.1	0.64
200.07156	7247.1	0.69
201.06624	185449.2	17.68
210.12380	7014.6	0.67
211.10830	22621.0	2.16
212.14000	10919.1	1.04
214.19213	20125.7	1.92

Nclavipes#3746-3776 RT: 9.42-9.49 AV: 6

F: FTMS + p ESI d Full ms2 472.82@hcd35.00 [65.67-985.00]

m/z= 50.00000-1000.00000

m/z	Intensity	Relative
215.08194	143629.6	13.69
216.06588	9976.1	0.95
220.17338	6990.5	0.67
226.19186	51810.4	4.94
228.13469	158039.2	15.07
228.68690	11137.3	1.06
231.21861	28091.9	2.68
243.07679	35936.9	3.43
243.21821	9794.6	0.93
244.06089	10580.7	1.01
245.16157	5638.0	0.54
245.23463	11847.3	1.13
255.21852	17479.2	1.67
255.71054	77846.3	7.42
260.10310	24840.6	2.37
263.19755	5537.7	0.53
267.21852	15987.2	1.52
268.20236	16244.8	1.55
273.22904	85168.6	8.12
283.21345	28277.3	2.70
285.22876	374181.8	35.67
288.09815	54779.2	5.22
290.22129	17503.9	1.67
293.74273	50801.7	4.84
295.21343	25160.6	2.40
297.22897	146254.1	13.94
298.73454	25965.6	2.48
302.25523	36291.6	3.46
314.25539	89661.7	8.55
316.27109	15096.0	1.44
320.76598	48394.7	4.61
325.75830	30838.6	2.94
326.25737	6605.7	0.63
329.27923	19289.7	1.84
334.27078	6864.4	0.65
339.23980	7775.7	0.74
342.25146	14693.9	1.40
350.76396	9496.6	0.91
356.30324	30830.0	2.94

Nclavipes#3746-3776 RT: 9.42-9.49 AV: 6

F: FTMS + p ESI d Full ms2 472.82@hcd35.00 [65.67-985.00]

m/z= 50.00000-1000.00000

m/z	Intensity	Relative
359.17154	12732.5	1.21
368.30256	35370.9	3.37
369.27165	6420.5	0.61
373.32872	47088.6	4.49
377.78676	9359.2	0.89
385.32945	13444.1	1.28
399.27188	21191.5	2.02
401.18278	30898.6	2.95
415.34008	43611.3	4.16
420.26046	18624.6	1.78
425.32284	13005.5	1.24
427.33971	124408.7	11.86
428.77389	47585.8	4.54
437.32943	5296.7	0.50
439.34014	46101.7	4.40
444.36543	25697.2	2.45
455.80025	10813.9	1.03
456.36673	99857.8	9.52
464.31149	52012.2	4.96
472.82492	25816.3	2.46
510.41277	20824.2	1.99
527.43863	16745.4	1.60
543.29224	9461.2	0.90
555.29380	10376.0	0.99
557.45005	22676.7	2.16
560.32037	43444.7	4.14
567.43557	5696.3	0.54
569.45145	40503.3	3.86
572.31915	55941.4	5.33
579.43227	16705.8	1.59
586.47817	53101.1	5.06
596.45965	25737.4	2.45
640.51972	12982.5	1.24
650.50978	5517.7	0.53
657.54790	37139.3	3.54
667.53031	10438.3	1.00
700.51635	6606.0	0.63
702.42661	17405.2	1.66
714.42719	26210.2	2.50

Nclavipes#3746-3776 RT: 9.42-9.49 AV: 6

F: FTMS + p ESI d Full ms2 472.82@hcd35.00 [65.67-985.00]

m/z= 50.00000-1000.00000

m/z	Intensity	Relative
844.53260	27438.0	2.62
873.56730	45574.0	4.35