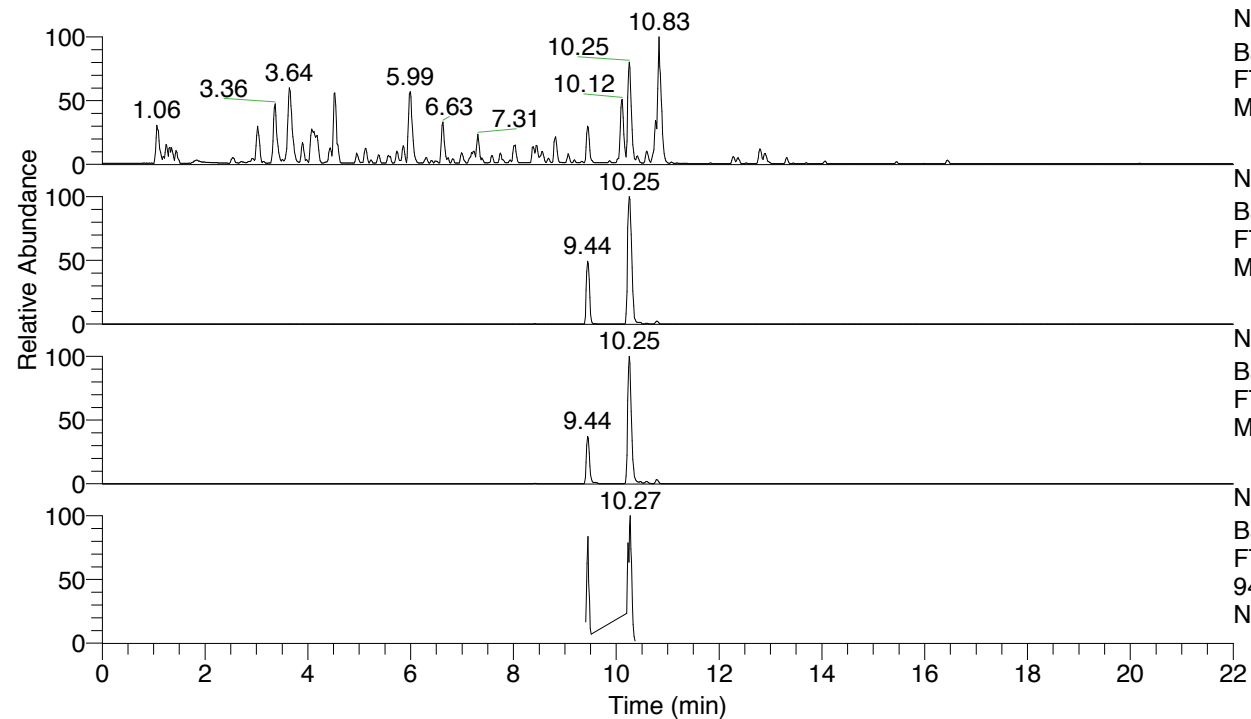


RT: 0.00 - 22.01



NL: 4.79E7
 Base Peak m/z= 100.00000-1500.00000 F:
 FTMS + p ESI Full ms [100.00-1500.00]
 MS Nclavipes

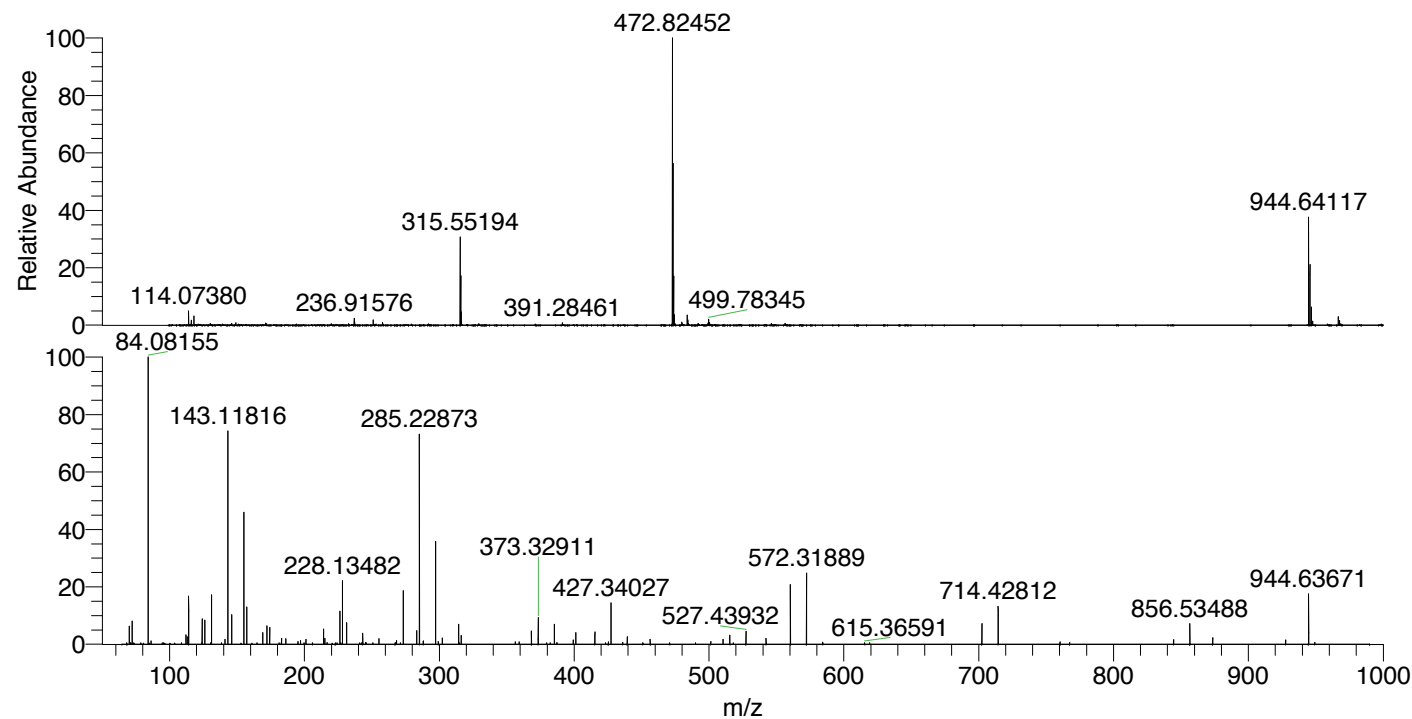
NL: 1.09E7
 Base Peak m/z= 944.63621-944.64565 F:
 FTMS + p ESI Full ms [100.00-1500.00]
 MS Nclavipes

NL: 3.84E7
 Base Peak m/z= 472.82202-472.82674 F:
 FTMS + p ESI Full ms [100.00-1500.00]
 MS Nclavipes

NL: 6.58E5
 Base Peak m/z= 50.00000-1500.00000 F:
 FTMS + p ESI d Full ms2
 944.64@hcd35.00 [65.33-980.00] MS
 Nclavipes

Nclavipes#3748-3771 RT: 9.42-9.48 AV:
 F: FTMS + p ESI d Full ms2 944.64 ...
 m/z= 50.00000-1000.00000

m/z	Intensity	Relative
70.06595	20765.9	6.28
72.08168	25766.9	7.79
84.08155	330822.1	100.00
112.07632	10675.3	3.23
113.10821	8386.2	2.53
114.09190	54752.3	16.55
124.07628	29163.3	8.82
126.09179	27542.9	8.33
131.11827	55796.1	16.87
141.10310	5522.3	1.67
143.11816	238327.7	72.04
146.06052	33097.2	10.00
155.11820	150148.6	45.39
157.13406	41505.0	12.55
169.13396	13153.5	3.98
172.14478	20421.0	6.17
174.05520	5689.6	1.72
174.16083	19210.3	5.81
183.11333	6695.4	2.02
186.16067	6459.4	1.95
201.06641	5388.3	1.63
214.19186	17367.6	5.25
215.08249	6528.0	1.97
226.19205	37439.7	11.32
228.13482	71226.1	21.53
231.21862	24347.1	7.36
243.21957	12764.2	3.86
255.21779	6304.9	1.91
273.22926	61104.5	18.47
283.21390	15283.3	4.62
285.22873	234471.7	70.88
297.22863	115112.3	34.80
302.25532	7142.3	2.16
314.25590	22511.8	6.80
316.27221	10246.4	3.10
368.30286	14754.8	4.46
373.32911	29929.6	9.05
385.32840	22561.2	6.82
401.18328	13164.7	3.98
415.33889	13740.0	4.15
427.34027	46295.8	13.99
439.34098	8654.8	2.62
456.36618	5701.0	1.72
510.41563	5620.3	1.70
515.44035	10039.8	3.03
527.43932	14691.7	4.44
542.30766	6997.4	2.12
560.32014	69260.3	20.94
572.31889	79452.7	24.02
702.42581	23308.1	7.05
714.42812	42815.8	12.94
844.54665	5324.3	1.61
856.53488	23178.3	7.01
873.56588	7397.7	2.24
944.63671	57230.0	17.30



NL: 1.39E7
 Nclavipes#3757 RT: 9.44
 AV: 1 T: FTMS + p ESI
 Full ms [100.00-1500.00]

NL: 3.21E5
 Nclavipes#3745-3773 RT:
 9.42-9.48 AV: 5 F: FTMS
 + p ESI d Full ms2
 944.64@hcd35.00
 [65.33-980.00]

Nclavipes#3748-3771 RT: 9.42-9.48 AV: 5

F: FTMS + p ESI d Full ms2 944.64@hcd35.00 [65.33-980.00]

m/z= 50.00000-1000.00000

m/z	Intensity	Relative
68.27631	1663.4	0.50
70.06595	20765.9	6.28
72.08168	25766.9	7.79
84.08155	330822.1	100.00
86.09711	4021.6	1.22
94.43872	1733.3	0.52
108.77102	1665.0	0.50
112.07632	10675.3	3.23
113.10821	8386.2	2.53
114.09190	54752.3	16.55
124.07628	29163.3	8.82
126.09179	27542.9	8.33
130.28877	1734.3	0.52
131.11827	55796.1	16.87
141.10310	5522.3	1.67
143.11816	238327.7	72.04
146.06052	33097.2	10.00
155.11820	150148.6	45.39
157.13406	41505.0	12.55
169.09826	2401.3	0.73
169.13396	13153.5	3.98
172.14478	20421.0	6.17
174.05520	5689.6	1.72
174.16083	19210.3	5.81
181.09163	1678.6	0.51
183.11333	6695.4	2.02
186.12431	2210.1	0.67
186.16067	6459.4	1.95
195.11284	3232.9	0.98
197.12846	4207.4	1.27
199.74981	1706.6	0.52
201.06641	5388.3	1.63
214.19186	17367.6	5.25
215.08249	6528.0	1.97
216.79747	1900.7	0.57
224.13990	1813.2	0.55
226.19205	37439.7	11.32
227.02260	1748.8	0.53
228.13482	71226.1	21.53

Nclavipes#3748-3771 RT: 9.42-9.48 AV: 5

F: FTMS + p ESI d Full ms2 944.64@hcd35.00 [65.33-980.00]

m/z= 50.00000-1000.00000

m/z	Intensity	Relative
231.21862	24347.1	7.36
243.21957	12764.2	3.86
245.16260	1852.6	0.56
245.94766	1718.5	0.52
255.21779	6304.9	1.91
267.21879	2054.4	0.62
268.20265	4155.8	1.26
271.06265	1789.1	0.54
273.22926	61104.5	18.47
283.21390	15283.3	4.62
285.22873	234471.7	70.88
288.09843	3829.0	1.16
297.22863	115112.3	34.80
299.24466	3029.7	0.92
302.25532	7142.3	2.16
314.25590	22511.8	6.80
315.12248	1745.1	0.53
316.27221	10246.4	3.10
356.30045	2643.7	0.80
359.17042	2734.2	0.83
368.30286	14754.8	4.46
373.32911	29929.6	9.05
379.62923	1701.5	0.51
382.24705	1791.9	0.54
385.32840	22561.2	6.82
387.27510	1976.9	0.60
399.27087	4887.1	1.48
401.18328	13164.7	3.98
415.33889	13740.0	4.15
423.31334	1666.9	0.50
425.32535	2822.2	0.85
427.34027	46295.8	13.99
435.97349	1978.6	0.60
439.34098	8654.8	2.62
450.92741	1727.0	0.52
456.36618	5701.0	1.72
489.95217	1693.0	0.51
501.28035	3235.0	0.98
510.41563	5620.3	1.70

Nclavipes#3748-3771 RT: 9.42-9.48 AV: 5

F: FTMS + p ESI d Full ms2 944.64@hcd35.00 [65.33-980.00]

m/z= 50.00000-1000.00000

m/z	Intensity	Relative
515.44035	10039.8	3.03
517.96079	1764.2	0.53
527.43932	14691.7	4.44
542.30766	6997.4	2.12
560.32014	69260.3	20.94
572.31889	79452.7	24.02
584.32559	2273.5	0.69
615.36591	1788.9	0.54
619.11754	1743.9	0.53
702.42581	23308.1	7.05
714.42812	42815.8	12.94
760.26310	1983.7	0.60
760.31406	2121.7	0.64
760.35147	2583.0	0.78
767.41582	1923.1	0.58
844.54665	5324.3	1.61
856.53488	23178.3	7.01
873.56588	7397.7	2.24
927.61746	4748.3	1.44
944.63671	57230.0	17.30
949.21141	1812.7	0.55