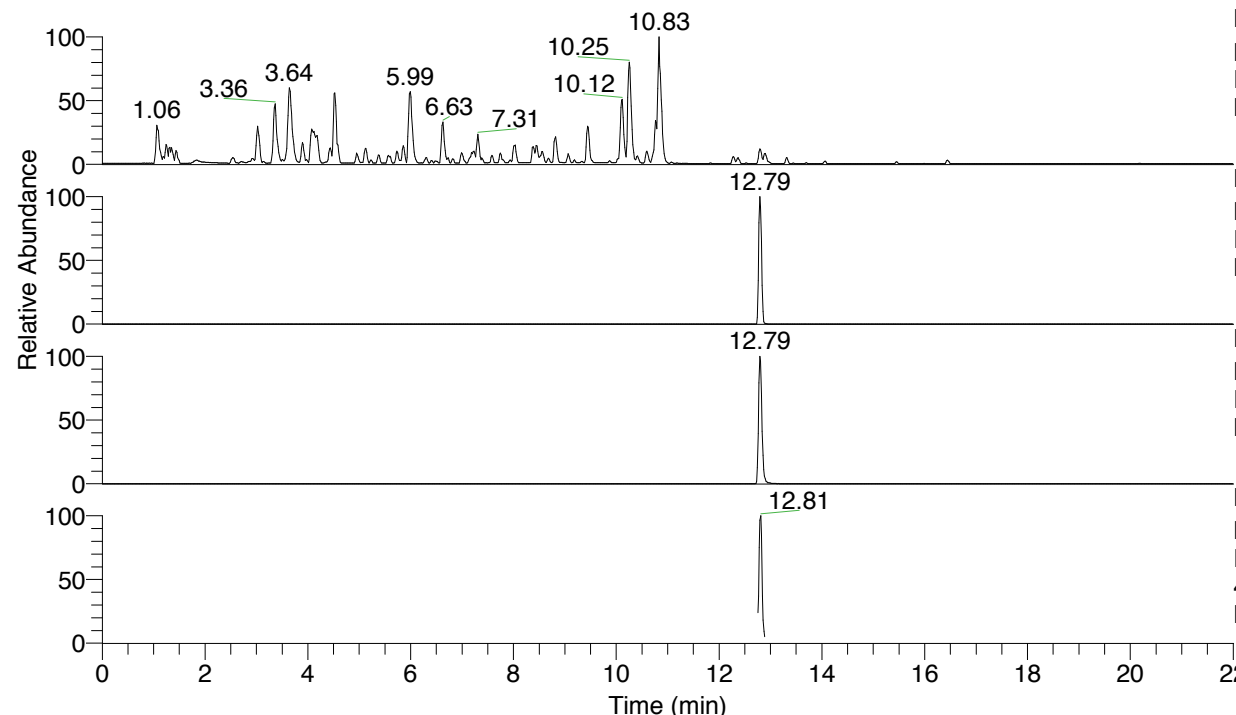


RT: 0.00 - 22.01



NL: 4.79E7
 Base Peak m/z= 100.00000-1500.00000 F:
 FTMS + p ESI Full ms [100.00-1500.00]
 MS Nclavipes

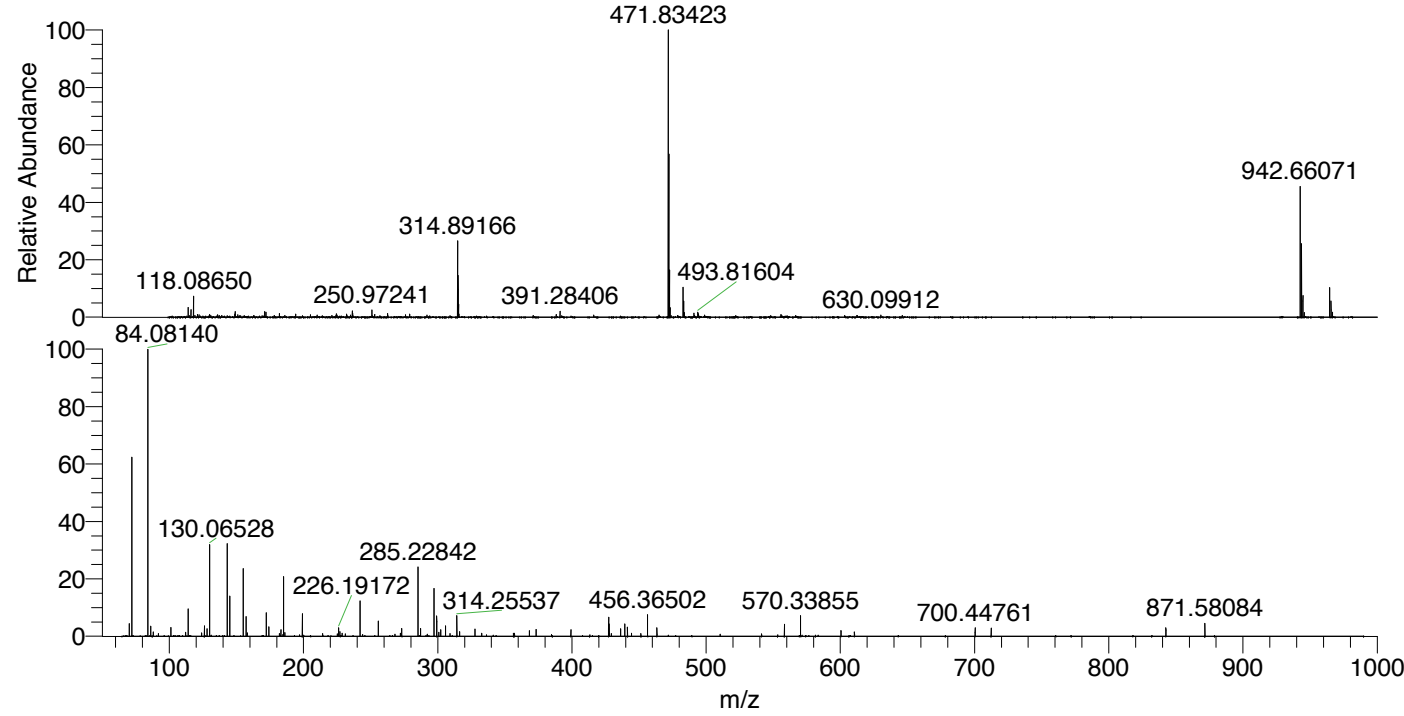
NL: 2.73E6
 Base Peak m/z= 942.65696-942.66638 F:
 FTMS + p ESI Full ms [100.00-1500.00]
 MS Nclavipes

NL: 5.85E6
 Base Peak m/z= 471.83239-471.83711 F:
 FTMS + p ESI Full ms [100.00-1500.00]
 MS Nclavipes

NL: 4.74E5
 Base Peak m/z= 50.00000-1500.00000 F:
 FTMS + p ESI d Full ms2
 471.83@hcd35.00 [65.33-980.00] MS
 Nclavipes

Nclavipes#5084-5114 RT: 12.77-12.84
 F: FTMS + p ESI d Full ms2 471.83 ...
 m/z= 50.00000-1000.00000

m/z	Intensity	Relative
70.06595	14234.9	4.41
72.08152	195311.9	60.53
84.08140	322684.6	100.00
86.09715	10930.4	3.39
88.03987	4688.6	1.45
101.10779	9719.9	3.01
112.07643	4333.8	1.34
114.09178	30164.4	9.35
124.07617	3870.5	1.20
126.09178	11659.9	3.61
128.10768	8386.7	2.60
130.06528	101240.5	31.37
143.11796	100674.7	31.20
145.13362	43583.9	13.51
155.11801	74352.6	23.04
157.13379	21562.4	6.68
172.14469	25471.3	7.89
174.16057	10600.3	3.29
183.11315	7039.8	2.18
185.07103	65212.3	20.21
186.16057	4063.0	1.26
199.08727	24561.2	7.61
226.19172	9137.1	2.83
227.08138	5188.0	1.61
242.14975	39965.6	12.39
255.70995	16671.2	5.17
273.22892	8793.0	2.72
285.22842	75350.0	23.35
287.24428	8462.9	2.62
297.22822	51923.6	16.09
299.24505	22251.0	6.90
300.74999	4463.0	1.38
302.25661	7247.9	2.25
305.74213	11666.7	3.62
314.25537	22610.7	7.01
316.27079	5063.0	1.57
327.77306	7982.7	2.47
368.30244	6055.1	1.88
373.32866	7578.7	2.35
399.20260	7379.0	2.29
427.33889	20758.5	6.43
427.78475	13697.8	4.24
436.29820	8303.0	2.57
439.33827	14104.4	4.37
441.35678	9880.3	3.06
456.36502	23927.5	7.42
463.32108	9319.9	2.89
558.33908	13018.5	4.03
570.33855	23005.1	7.13
600.49185	6284.0	1.95
610.47516	4682.8	1.45
700.44761	9395.7	2.91
712.44832	8984.5	2.78
842.55447	9113.6	2.82
871.58084	14735.4	4.57
942.66071		



NL: 5.76E6
 Nclavipes#5095 RT: 12.79
 AV: 1 T: FTMS + p ESI
 Full lock ms
 [100.00-1500.00]

NL: 3.12E5
 Nclavipes#5084-5114 RT:
 12.77-12.84 AV: 6 F:
 FTMS + p ESI d Full ms2
 471.83@hcd35.00
 [65.33-980.00]

Nclavipes#5084-5114 RT: 12.77-12.84 AV: 6

F: FTMS + p ESI d Full ms2 471.83@hcd35.00 [65.33-980.00]

m/z= 50.00000-1000.00000

m/z	Intensity	Relative
70.06595	14234.9	4.41
72.08152	195311.9	60.53
72.08538	3186.1	0.99
84.08140	322684.6	100.00
86.09715	10930.4	3.39
88.03987	4688.6	1.45
91.75203	2426.7	0.75
91.75895	3090.0	0.96
101.10779	9719.9	3.01
112.07643	4333.8	1.34
114.09178	30164.4	9.35
124.07617	3870.5	1.20
126.09178	11659.9	3.61
128.10768	8386.7	2.60
130.06528	101240.5	31.37
143.11796	100674.7	31.20
145.13362	43583.9	13.51
155.11801	74352.6	23.04
157.13379	21562.4	6.68
158.06079	3537.7	1.10
172.14469	25471.3	7.89
174.16057	10600.3	3.29
182.06009	2825.1	0.88
183.11315	7039.8	2.18
184.65591	1811.7	0.56
185.07103	65212.3	20.21
186.16057	4063.0	1.26
197.12807	1735.4	0.54
199.08727	24561.2	7.61
214.19258	3040.6	0.94
225.12430	2616.6	0.81
226.19172	9137.1	2.83
227.08138	5188.0	1.61
228.68640	3531.8	1.09
231.21846	2578.5	0.80
242.14975	39965.6	12.39
244.10855	2077.1	0.64
255.70995	16671.2	5.17
268.20288	2132.2	0.66

Nclavipes#5084-5114 RT: 12.77-12.84 AV: 6

F: FTMS + p ESI d Full ms2 471.83@hcd35.00 [65.33-980.00]

m/z= 50.00000-1000.00000

m/z	Intensity	Relative
272.10354	3330.8	1.03
273.22892	8793.0	2.72
285.22842	75350.0	23.35
287.24428	8462.9	2.62
292.23690	2115.7	0.66
297.22822	51923.6	16.09
299.24505	22251.0	6.90
300.74999	4463.0	1.38
302.25661	7247.9	2.25
305.74213	11666.7	3.62
309.22962	3060.5	0.95
314.25537	22610.7	7.01
316.27079	5063.0	1.57
327.77306	7982.7	2.47
332.76695	3400.1	1.05
336.28691	1724.7	0.53
356.30158	3363.1	1.04
357.19233	3292.4	1.02
368.30244	6055.1	1.88
373.32866	7578.7	2.35
384.79457	2026.3	0.63
399.20260	7379.0	2.29
427.33889	20758.5	6.43
427.78475	13697.8	4.24
429.35587	3056.6	0.95
436.29820	8303.0	2.57
439.33827	14104.4	4.37
441.35678	9880.3	3.06
444.36653	3436.3	1.06
451.33918	2890.7	0.90
456.36502	23927.5	7.42
463.32108	9319.9	2.89
510.41455	2283.7	0.71
541.31539	2510.8	0.78
558.33908	13018.5	4.03
570.33855	23005.1	7.13
600.49185	6284.0	1.95
610.47516	4682.8	1.45
700.44761	9395.7	2.91

Nclavipes#5084-5114 RT: 12.77-12.84 AV: 6

F: FTMS + p ESI d Full ms2 471.83@hcd35.00 [65.33-980.00]

m/z= 50.00000-1000.00000

m/z	Intensity	Relative
712.44832	8984.5	2.78
842.55447	9113.6	2.82
871.58084	14735.4	4.57