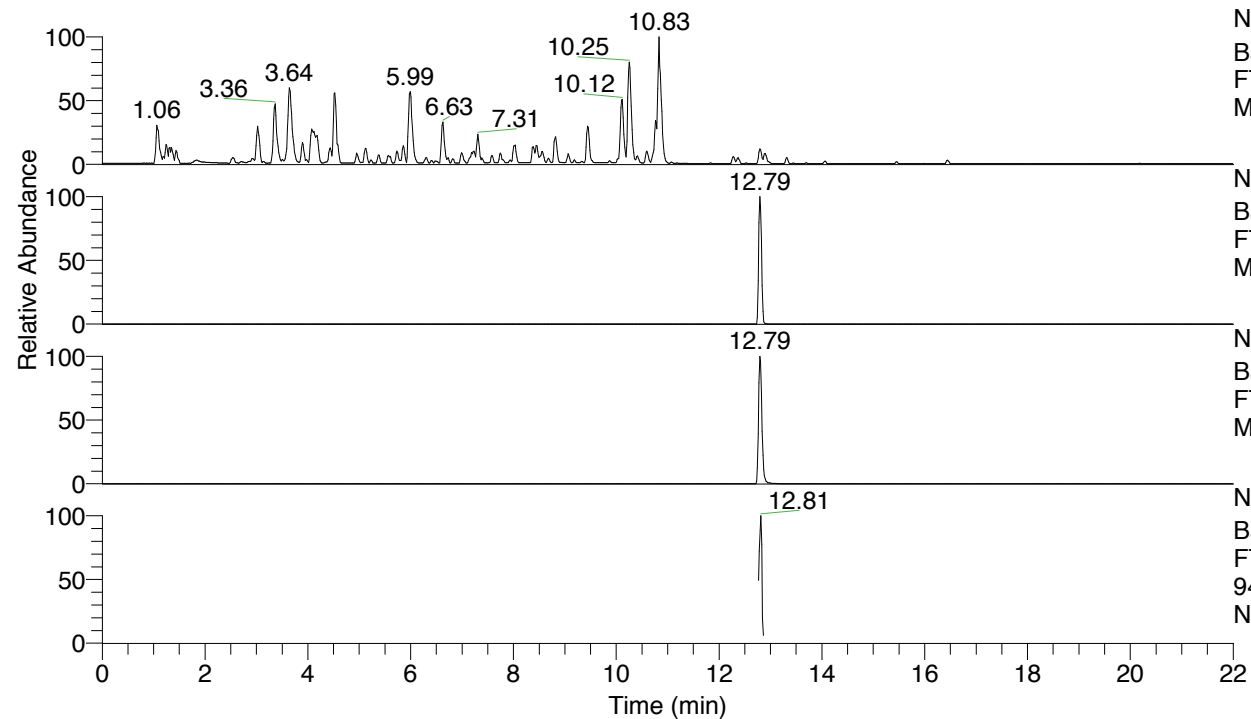


RT: 0.00 - 22.01



NL: 4.79E7
 Base Peak m/z= 100.00000-1500.00000 F:
 FTMS + p ESI Full ms [100.00-1500.00]
 MS Nclavipes

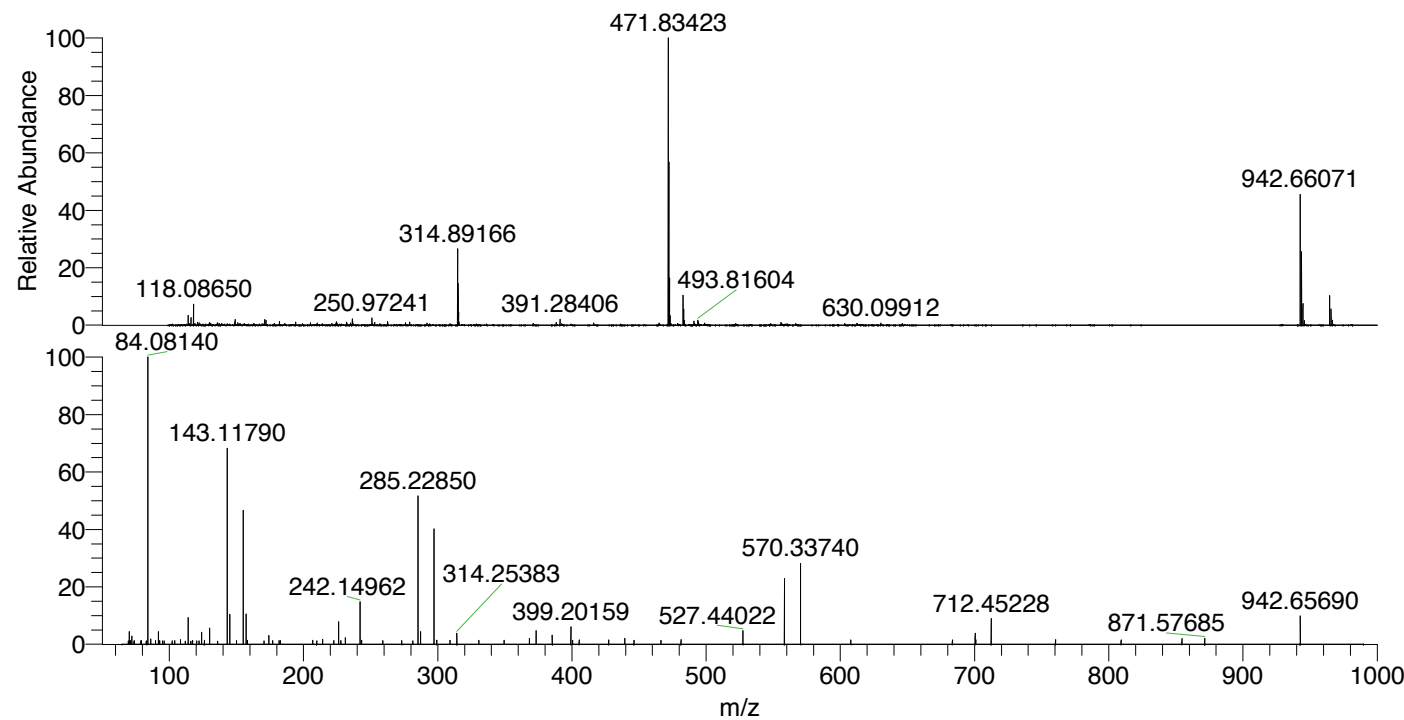
NL: 2.73E6
 Base Peak m/z= 942.65696-942.66638 F:
 FTMS + p ESI Full ms [100.00-1500.00]
 MS Nclavipes

NL: 5.85E6
 Base Peak m/z= 471.83239-471.83711 F:
 FTMS + p ESI Full ms [100.00-1500.00]
 MS Nclavipes

NL: 1.92E5
 Base Peak m/z= 50.00000-1500.00000 F:
 FTMS + p ESI d Full ms2
 942.66@hcd35.00 [65.33-980.00] MS
 Nclavipes

Nclavipes#5091-5109 RT: 12.78-12.83
 F: FTMS + p ESI d Full ms2 942.66 ...
 m/z= 50.00000-1000.00000

m/z	Intensity	Relative
70.06578	6738.9	4.36
70.86100	2036.2	1.32
72.08144	4412.0	2.86
84.08140	154412.7	100.00
86.09710	2744.8	1.78
91.75817	6644.6	4.30
108.41057	2379.3	1.54
114.09168	14519.8	9.40
124.07587	6410.4	4.15
126.09192	2140.3	1.39
130.06519	8767.9	5.68
143.11790	103669.0	67.14
145.13380	15718.6	10.18
155.11825	71287.3	46.17
157.13381	15913.2	10.31
158.06014	2225.0	1.44
174.16072	4626.1	3.00
206.79925	2139.4	1.39
214.19122	2585.1	1.67
226.19180	12034.9	7.79
231.21816	3432.0	2.22
242.14962	22767.4	14.74
243.21958	2225.2	1.44
285.22850	78099.7	50.58
287.24413	6665.6	4.32
297.22897	60745.2	39.34
299.24515	2236.6	1.45
309.23419	2063.5	1.34
314.25383	5933.0	3.84
330.59072	2051.9	1.33
349.47286	2164.9	1.40
368.30301	3146.2	2.04
373.33045	7233.5	4.68
385.32771	4804.8	3.11
399.20159	9106.4	5.90
400.48286	2173.7	1.41
405.39678	2312.1	1.50
427.34095	2237.7	1.45
439.34077	3165.3	2.05
446.20287	2174.4	1.41
481.28139	2369.0	1.53
527.44022	7308.7	4.73
558.33941	35451.5	22.96
570.33740	42680.1	27.64
607.81919	2363.3	1.53
683.51048	2278.2	1.48
700.44583	5806.3	3.76
700.85575	2203.9	1.43
700.99328	2321.8	1.50
712.45228	13617.9	8.82
760.34628	2358.0	1.53
809.22558	2345.7	1.52
854.55022	3029.0	1.96
871.57685	3155.3	2.04
942.65690	15020.3	9.73



NL: 5.76E6
 Nclavipes#5095 RT: 12.79
 AV: 1 T: FTMS + p ESI
 Full lock ms
 [100.00-1500.00]

NL: 1.51E5
 Nclavipes#5087-5114 RT:
 12.78-12.83 AV: 4 F:
 FTMS + p ESI d Full ms2
 942.66@hcd35.00
 [65.33-980.00]

Nclavipes#5091-5109 RT: 12.78-12.83 AV: 4

F: FTMS + p ESI d Full ms2 942.66@hcd35.00 [65.33-980.00]

m/z= 50.00000-1000.00000

m/z	Intensity	Relative
69.48577	1723.7	1.12
70.06578	6738.9	4.36
70.65467	1702.9	1.10
70.86100	2036.2	1.32
72.08144	4412.0	2.86
73.71812	1772.9	1.15
73.90936	1789.0	1.16
78.81421	1706.6	1.11
79.16679	1924.1	1.25
82.83193	1610.1	1.04
83.15064	1768.1	1.15
84.08140	154412.7	100.00
86.09710	2744.8	1.78
89.62669	1910.1	1.24
91.75817	6644.6	4.30
92.82415	1906.8	1.23
95.05948	1779.3	1.15
96.04673	1789.4	1.16
102.20342	1725.0	1.12
104.13014	2015.2	1.31
108.41057	2379.3	1.54
111.86446	1553.5	1.01
114.09168	14519.8	9.40
116.04237	1639.8	1.06
117.13239	1733.1	1.12
117.45081	1993.8	1.29
120.36349	1740.7	1.13
120.53654	1791.6	1.16
122.21850	1761.6	1.14
124.07587	6410.4	4.15
126.09192	2140.3	1.39
130.06519	8767.9	5.68
136.00220	1727.7	1.12
143.11790	103669.0	67.14
145.13380	15718.6	10.18
150.03378	1947.0	1.26
155.11825	71287.3	46.17
157.13381	15913.2	10.31
158.06014	2225.0	1.44

Nclavipes#5091-5109 RT: 12.78-12.83 AV: 4

F: FTMS + p ESI d Full ms2 942.66@hcd35.00 [65.33-980.00]

m/z= 50.00000-1000.00000

m/z	Intensity	Relative
170.57971	1876.2	1.22
174.16072	4626.1	3.00
177.02130	1904.7	1.23
181.81272	1945.2	1.26
182.64746	1901.0	1.23
206.79925	2139.4	1.39
209.81758	1838.0	1.19
214.19122	2585.1	1.67
222.56311	1935.1	1.25
226.19180	12034.9	7.79
227.78367	1897.3	1.23
231.21816	3432.0	2.22
242.14962	22767.4	14.74
243.21958	2225.2	1.44
259.13765	2029.8	1.31
273.22879	1987.8	1.29
281.38519	1822.3	1.18
285.22850	78099.7	50.58
287.24413	6665.6	4.32
297.22897	60745.2	39.34
299.24515	2236.6	1.45
309.23419	2063.5	1.34
314.25383	5933.0	3.84
330.59072	2051.9	1.33
349.47286	2164.9	1.40
368.30301	3146.2	2.04
373.33045	7233.5	4.68
385.32771	4804.8	3.11
399.20159	9106.4	5.90
400.48286	2173.7	1.41
405.39678	2312.1	1.50
427.34095	2237.7	1.45
439.34077	3165.3	2.05
446.20287	2174.4	1.41
466.31461	2032.4	1.32
481.28139	2369.0	1.53
527.44022	7308.7	4.73
558.33941	35451.5	22.96
570.33740	42680.1	27.64

Nclavipes#5091-5109 RT: 12.78-12.83 AV: 4

F: FTMS + p ESI d Full ms2 942.66@hcd35.00 [65.33-980.00]

m/z= 50.00000-1000.00000

m/z	Intensity	Relative
607.81919	2363.3	1.53
683.51048	2278.2	1.48
700.44583	5806.3	3.76
700.85575	2203.9	1.43
700.99328	2321.8	1.50
712.45228	13617.9	8.82
760.34628	2358.0	1.53
809.22558	2345.7	1.52
854.55022	3029.0	1.96
871.57685	3155.3	2.04
942.65690	15020.3	9.73