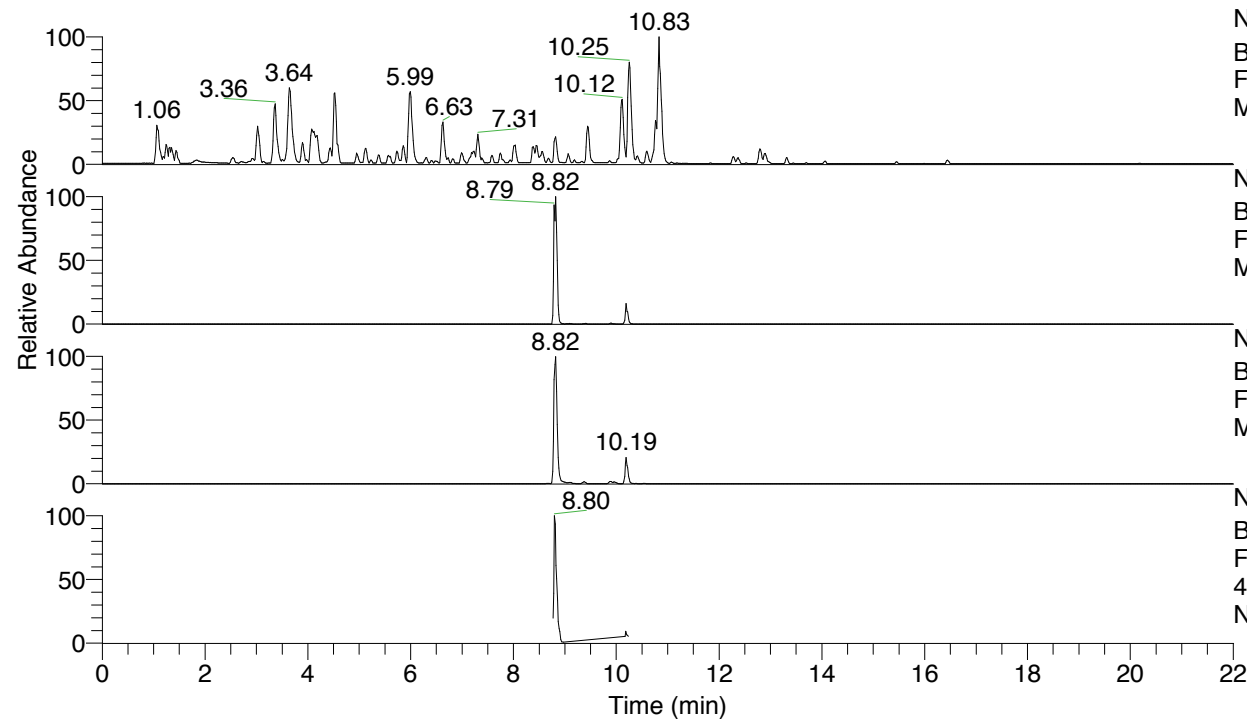


RT: 0.00 - 22.01

Nclavipes#3490-3530 RT: 8.77-8.87 AV:

F: FTMS + p ESI d Full ms2 465.82 ...

m/z= 50.00000-1000.00000



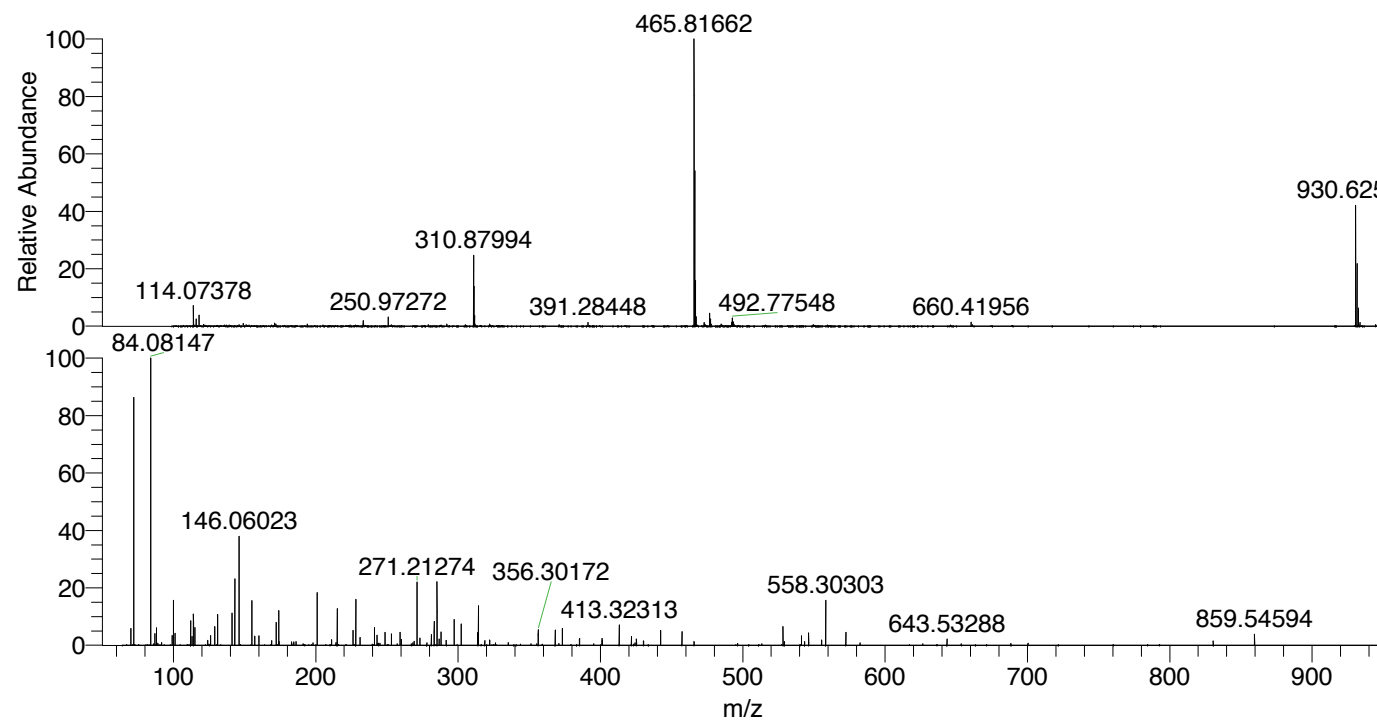
NL: 4.79E7  
Base Peak m/z= 100.00000-1500.00000 F:  
FTMS + p ESI Full ms [100.00-1500.00]  
MS Nclavipes

NL: 4.38E6  
Base Peak m/z= 930.62063-930.62993 F:  
FTMS + p ESI Full ms [100.00-1500.00]  
MS Nclavipes

NL: 1.04E7  
Base Peak m/z= 465.81422-465.81888 F:  
FTMS + p ESI Full ms [100.00-1500.00]  
MS Nclavipes

NL: 9.37E5  
Base Peak m/z= 50.00000-1500.00000 F:  
FTMS + p ESI d Full ms2  
465.82@hcd35.00 [64.67-970.00] MS  
Nclavipes

m/z	Intensity	Relative
70.06594	25497.7	5.48
72.08154	389209.7	83.71
84.08146	464977.4	100.00
87.05595	17647.8	3.80
88.04000	25837.0	5.56
99.09224	15440.1	3.32
100.07621	71758.7	15.43
101.10773	17645.9	3.79
112.07614	37988.3	8.17
113.10787	13888.1	2.99
114.09173	47444.8	10.20
115.05068	27054.0	5.82
126.09155	15027.0	3.23
129.10275	28484.5	6.13
131.11814	49829.5	10.72
141.10243	48555.1	10.44
143.11799	102944.5	22.14
146.06020	169543.9	36.46
155.11812	69703.8	14.99
157.13375	14235.8	3.06
160.14489	14441.5	3.11
172.14472	35098.7	7.55
174.05506	55046.1	11.84
201.06617	81563.2	17.54
215.08180	57979.7	12.47
226.19214	21887.2	4.71
228.13470	70672.1	15.20
231.21841	11141.7	2.40
241.20324	26242.1	5.64
243.07743	15683.4	3.37
248.70267	19629.5	4.22
253.20280	16584.9	3.57
259.21351	19941.5	4.29
271.21273	99846.5	21.47
281.19765	15907.2	3.42
283.21307	35643.8	7.67
285.22836	100237.9	21.56
288.09880	20382.9	4.38
297.22902	38784.1	8.34
302.25526	32824.7	7.06
313.75824	18415.4	3.96
314.25531	61327.4	13.19
356.30171	24073.3	5.18
368.30219	23588.7	5.07
373.32832	25313.8	5.44
413.32314	31626.5	6.80
421.76673	12766.9	2.75
442.35067	22868.5	4.92
457.30238	19331.2	4.16
528.29361	27573.8	5.93
541.27744	14623.8	3.15
546.30157	18105.6	3.89
558.30303	69111.9	14.86
572.45909	18420.5	3.96
859.54594	16350.2	3.52



NL: 1.04E7  
Nclavipes#3511 RT: 8.82  
AV: 1 T: FTMS + p ESI  
Full ms [100.00-1500.00]

NL: 5.49E5  
Nclavipes#3492-3528 RT:  
8.78-8.86 AV: 6 F: FTMS  
+ p ESI d Full ms2  
465.82@hcd35.00  
[64.67-970.00]

Nclavipes#3490-3530 RT: 8.77-8.87 AV: 8

F: FTMS + p ESI d Full ms2 465.82@hcd35.00 [64.67-970.00]

m/z= 50.00000-1000.00000

m/z	Intensity	Relative
70.06594	25497.7	5.48
72.08154	389209.7	83.71
84.08146	464977.4	100.00
87.05595	17647.8	3.80
88.04000	25837.0	5.56
89.10822	2887.4	0.62
91.75191	3981.4	0.86
91.75835	6026.1	1.30
99.09224	15440.1	3.32
100.07621	71758.7	15.43
101.10773	17645.9	3.79
112.07614	37988.3	8.17
113.10787	13888.1	2.99
114.09173	47444.8	10.20
115.05068	27054.0	5.82
124.07600	8015.3	1.72
126.09155	15027.0	3.23
129.10275	28484.5	6.13
131.11814	49829.5	10.72
141.10243	48555.1	10.44
143.11799	102944.5	22.14
146.06020	169543.9	36.46
155.11812	69703.8	14.99
157.13375	14235.8	3.06
160.14489	14441.5	3.11
169.09769	6451.2	1.39
172.14472	35098.7	7.55
174.05506	55046.1	11.84
174.16089	5166.7	1.11
183.11304	5550.5	1.19
184.65575	5021.1	1.08
186.12442	5233.5	1.13
186.16024	4706.3	1.01
198.05509	3671.7	0.79
201.06617	81563.2	17.54
211.10889	8310.6	1.79
214.19166	4146.6	0.89
215.08180	57979.7	12.47
226.19214	21887.2	4.71

Nclavipes#3490-3530 RT: 8.77-8.87 AV: 8

F: FTMS + p ESI d Full ms2 465.82@hcd35.00 [64.67-970.00]

m/z= 50.00000-1000.00000

m/z	Intensity	Relative
228.13470	70672.1	15.20
228.17024	3065.4	0.66
231.21841	11141.7	2.40
241.20324	26242.1	5.64
243.07743	15683.4	3.37
243.21771	2725.9	0.59
244.06101	2925.0	0.63
245.16206	2995.9	0.64
248.70267	19629.5	4.22
253.20280	16584.9	3.57
259.21351	19941.5	4.29
260.10319	9377.3	2.02
268.20214	3365.0	0.72
269.19731	5785.7	1.24
271.21273	99846.5	21.47
273.22882	10687.6	2.30
278.22025	3961.2	0.85
281.19765	15907.2	3.42
283.21307	35643.8	7.67
285.22836	100237.9	21.56
286.73456	9068.6	1.95
288.09880	20382.9	4.38
291.72639	8021.7	1.73
297.22902	38784.1	8.34
302.25526	32824.7	7.06
313.75824	18415.4	3.96
314.25531	61327.4	13.19
318.74913	6569.6	1.41
322.27062	7610.1	1.64
326.25557	3357.0	0.72
335.24301	3816.4	0.82
356.30171	24073.3	5.18
368.30219	23588.7	5.07
370.77880	2712.4	0.58
373.25438	2616.4	0.56
373.32832	25313.8	5.44
385.25586	9014.8	1.94
385.32944	10117.9	2.18
401.18284	9777.5	2.10

Nclavipes#3490-3530 RT: 8.77-8.87 AV: 8

F: FTMS + p ESI d Full ms2 465.82@hcd35.00 [64.67-970.00]

m/z= 50.00000-1000.00000

m/z	Intensity	Relative
401.32270	7393.1	1.59
413.25351	2365.5	0.51
413.32314	31626.5	6.80
421.76673	12766.9	2.75
424.33751	3619.0	0.78
425.32399	8984.6	1.93
430.28005	6334.3	1.36
442.35067	22868.5	4.92
457.30238	19331.2	4.16
465.81691	5129.0	1.10
496.39968	2495.8	0.54
528.29361	27573.8	5.93
529.27747	5157.1	1.11
541.27744	14623.8	3.15
543.43455	5227.5	1.12
546.30157	18105.6	3.89
555.43477	7800.8	1.68
558.30298	69111.9	14.86
572.45909	18420.5	3.96
582.44475	3433.5	0.74
643.53276	9924.8	2.13
688.40642	2380.9	0.51
700.41278	3056.6	0.66
830.51842	6287.0	1.35
859.54594	16350.2	3.52