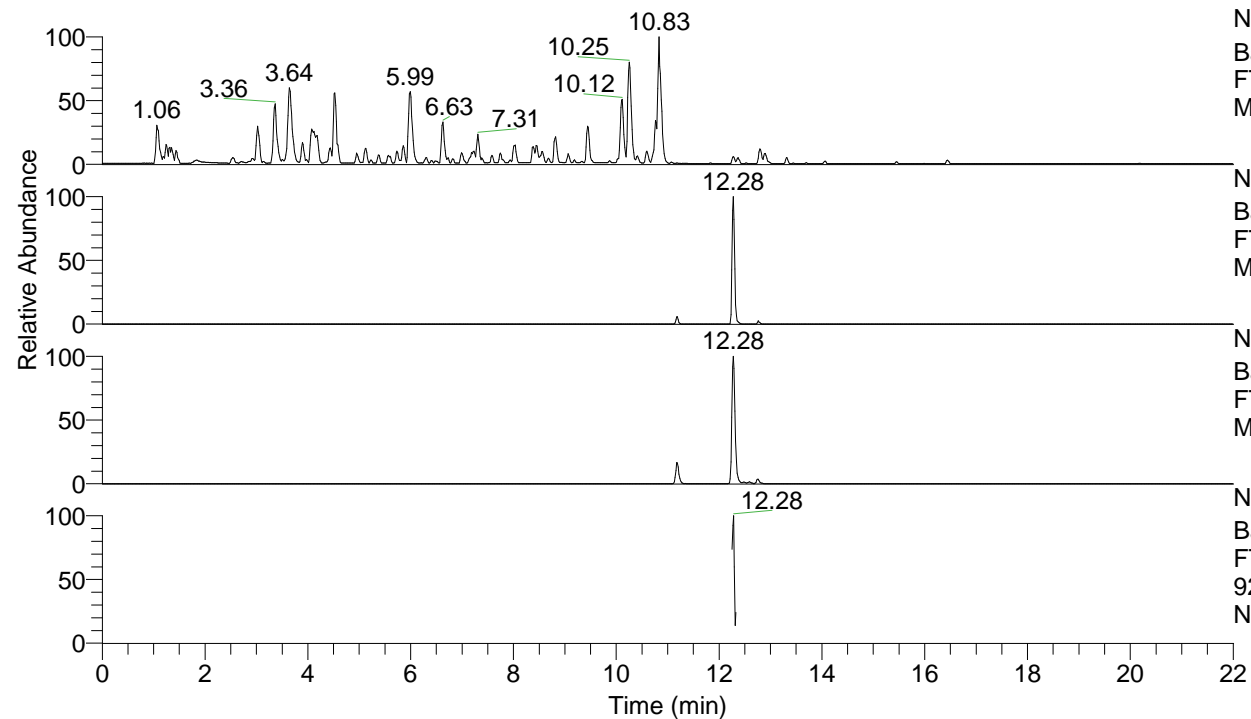


RT: 0.00 - 22.01



NL: 4.79E7
 Base Peak m/z= 100.00000-1500.00000 F:
 FTMS + p ESI Full ms [100.00-1500.00]
 MS Nclavipes

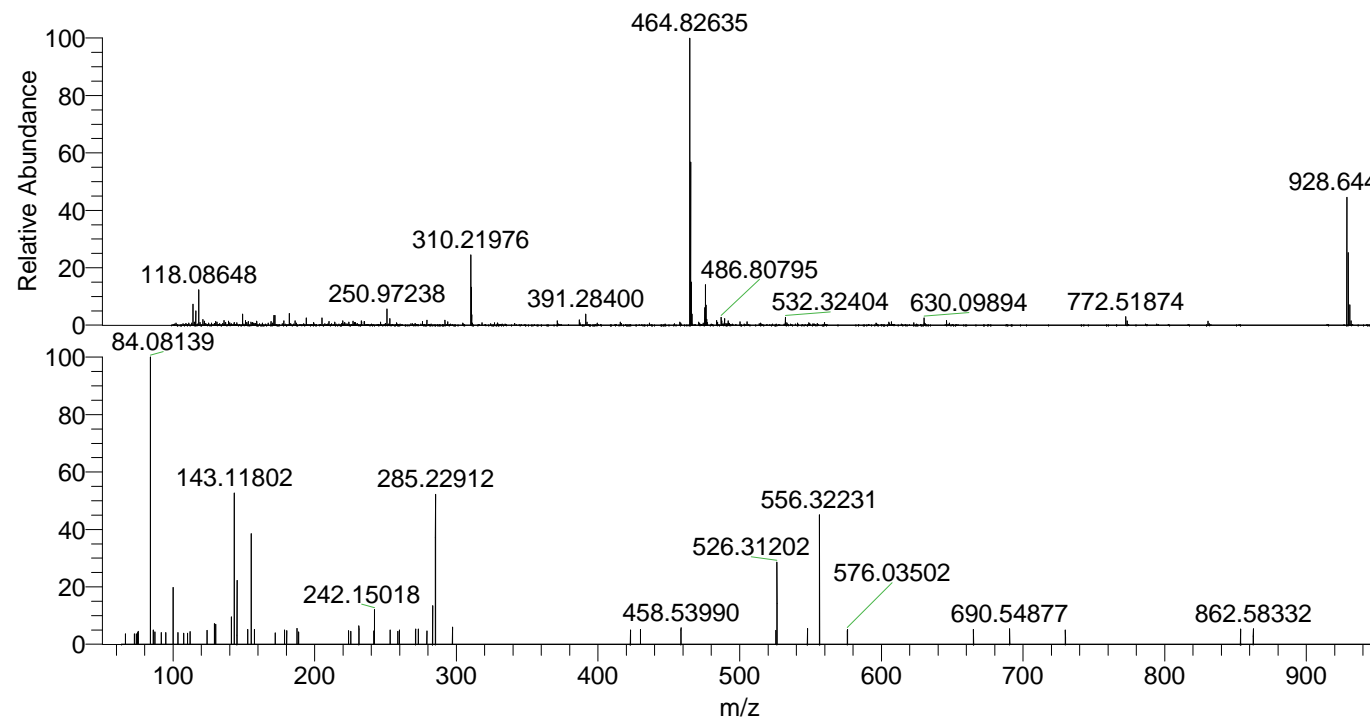
NL: 1.38E6
 Base Peak m/z= 928.64138-928.65066 F:
 FTMS + p ESI Full ms [100.00-1500.00]
 MS Nclavipes

NL: 2.99E6
 Base Peak m/z= 464.82460-464.82924 F:
 FTMS + p ESI Full ms [100.00-1500.00]
 MS Nclavipes

NL: 7.65E4
 Base Peak m/z= 50.00000-1500.00000 F:
 FTMS + p ESI d Full ms2
 928.64@hcd35.00 [64.33-965.00] MS
 Nclavipes

Nclavipes#4887-4893 RT: 12.27-12.28
 F: FTMS + p ESI d Full ms2 928.64 ...
 m/z= 50.00000-1000.00000

m/z	Intensity	Relative
66.36297	3096.5	4.49
72.72400	3105.9	4.50
73.99282	3123.4	4.53
75.48736	4031.5	5.84
84.08124	69000.4	100.00
86.09655	4273.9	6.19
91.75794	3483.0	5.05
94.78069	3553.0	5.15
100.07615	13466.1	19.52
103.46838	3565.5	5.17
110.30744	3416.0	4.95
124.07590	4331.0	6.28
129.10176	6206.9	9.00
130.06590	5969.2	8.65
141.10238	8293.1	12.02
143.11803	36604.0	53.05
145.13363	13976.8	20.26
155.11792	27412.7	39.73
157.42233	4473.4	6.48
172.14331	3456.3	5.01
178.63391	4313.7	6.25
187.43871	4772.1	6.92
187.54902	4008.6	5.81
225.51540	3941.3	5.71
231.21876	5502.3	7.97
241.71734	4099.1	5.94
242.15018	10631.2	15.41
258.60408	4024.9	5.83
273.22637	4596.5	6.66
279.15057	4040.6	5.86
283.21178	11870.2	17.20
285.22909	31838.1	46.14
297.22927	5197.0	7.53
422.87646	4390.5	6.36
429.91742	4594.7	6.66
458.53990	4951.7	7.18
526.31202	20299.3	29.42
547.82936	4711.5	6.83
556.32231	32447.2	47.02
576.03502	4460.4	6.46
665.00730	4499.1	6.52
729.88402	4319.7	6.26
862.58332	4697.5	6.81



NL: 2.93E6
 Nclavipes#4891 RT: 12.28
 AV: 1 T: FTMS + p ESI
 Full lock ms
 [100.00-1500.00]

NL: 5.74E4
 Nclavipes#4885-4904 RT:
 12.27-12.30 AV: 3 F:
 FTMS + p ESI d Full ms2
 928.64@hcd35.00
 [64.33-965.00]