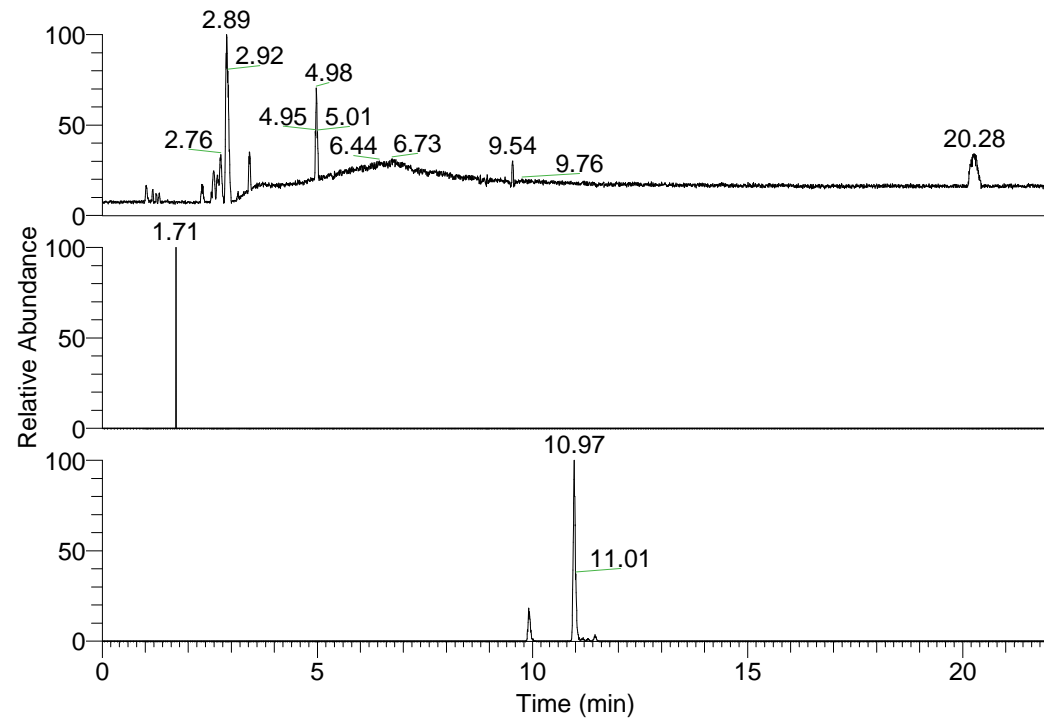


RT: 0.00 - 22.01



NL: 1.01E8  
 Base Peak m/z=  
 100.00000-1500.00000 F:  
 FTMS + p ESI Full ms  
 [100.00-1500.00] MS  
 Nclavipes\_HDX

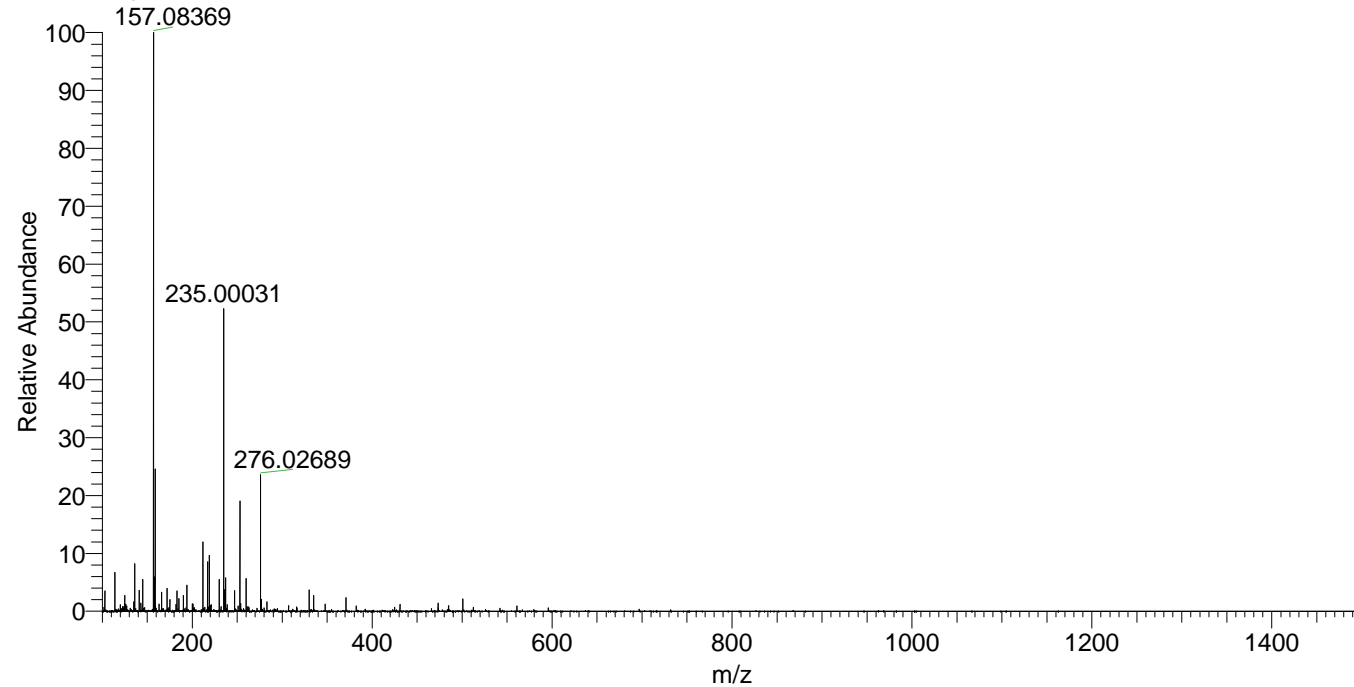
NL: 2.53E3  
 Base Peak m/z=  
 944.74173-944.75117 F:  
 FTMS + p ESI Full ms  
 [100.00-1500.00] MS  
 Nclavipes\_HDX

NL: 1.52E6  
 Base Peak m/z=  
 473.37791-473.38265 F:  
 FTMS + p ESI Full ms  
 [100.00-1500.00] MS  
 Nclavipes\_HDX

Nclavipes\_HDX#1593 RT: 9.91  
 T: FTMS + p ESI Full ms [100.00-1500.00]  
 m/z= 473.00000-474.00000

m/z	Intensity	Relative	Delta (ppm)	Composition
473.38019	277571.3	100.00	-0.66	C <sub>46</sub> H <sub>68</sub> <sup>2</sup> H <sub>16</sub> O <sub>7</sub> N <sub>13</sub>
			0.98	C <sub>46</sub> H <sub>66</sub> <sup>2</sup> H <sub>17</sub> O <sub>7</sub> N <sub>13</sub>
			-2.29	C <sub>46</sub> H <sub>70</sub> <sup>2</sup> H <sub>15</sub> O <sub>7</sub> N <sub>13</sub>
			2.61	C <sub>46</sub> H <sub>64</sub> <sup>2</sup> H <sub>18</sub> O <sub>7</sub> N <sub>13</sub>
			-3.93	C <sub>46</sub> H <sub>72</sub> <sup>2</sup> H <sub>14</sub> O <sub>7</sub> N <sub>13</sub>
			4.25	C <sub>46</sub> H <sub>62</sub> <sup>2</sup> H <sub>19</sub> O <sub>7</sub> N <sub>13</sub>

Nclavipes\_HDX #1593 RT: 9.91 AV: 1 NL: 1.99E7  
 T: FTMS + p ESI Full ms [100.00-1500.00]



Nclavipes\_HDX #1593 RT: 9.91 AV: 1 NL: 2.77E5  
 T: FTMS + p ESI Full ms [100.00-1500.00]

