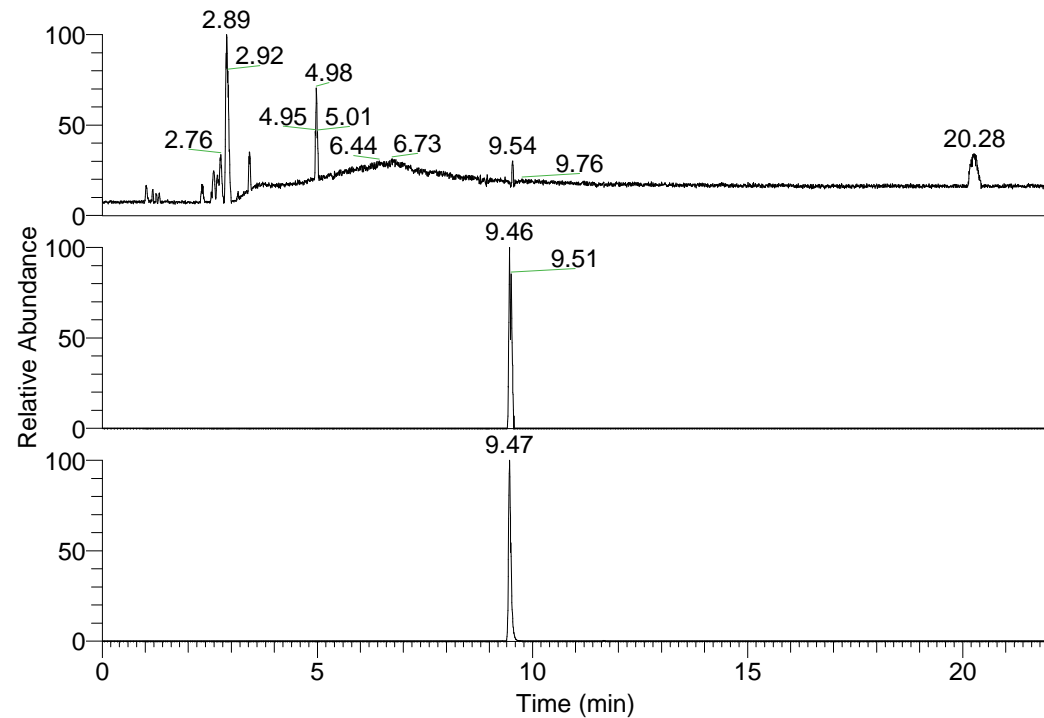


RT: 0.00 - 22.01



NL: 1.01E8  
 Base Peak m/z=  
 100.00000-1500.00000 F:  
 FTMS + p ESI Full ms  
 [100.00-1500.00] MS  
 Nclavipes\_HDX

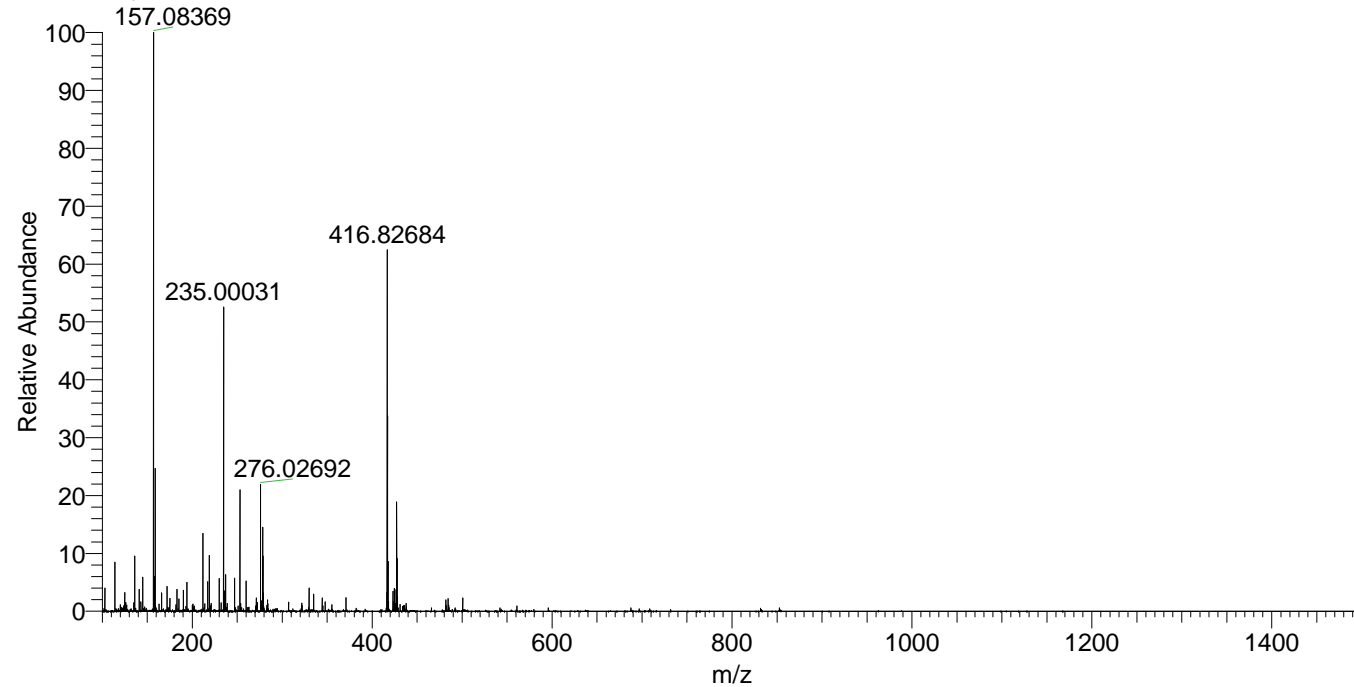
NL: 1.23E5  
 Base Peak m/z=  
 831.63596-831.64428 F:  
 FTMS + p ESI Full ms  
 [100.00-1500.00] MS  
 Nclavipes\_HDX

NL: 1.23E7  
 Base Peak m/z=  
 416.82503-416.82919 F:  
 FTMS + p ESI Full ms  
 [100.00-1500.00] MS  
 Nclavipes\_HDX

Nclavipes\_HDX#1518 RT: 9.46  
 T: FTMS + p ESI Full ms [100.00-1500.00]  
 m/z= 831.00000-832.00000

m/z	Intensity	Relative	Delta (ppm)	Composition
831.63947	97885.4	100.00	-0.13	C <sub>40</sub> H <sub>55</sub> <sup>2</sup> H <sub>15</sub> O <sub>7</sub> N <sub>11</sub>
			1.73	C <sub>40</sub> H <sub>53</sub> <sup>2</sup> H <sub>16</sub> O <sub>7</sub> N <sub>11</sub>
			-1.99	C <sub>40</sub> H <sub>57</sub> <sup>2</sup> H <sub>14</sub> O <sub>7</sub> N <sub>11</sub>
			3.60	C <sub>40</sub> H <sub>51</sub> <sup>2</sup> H <sub>17</sub> O <sub>7</sub> N <sub>11</sub>
			-3.85	C <sub>40</sub> H <sub>59</sub> <sup>2</sup> H <sub>13</sub> O <sub>7</sub> N <sub>11</sub>

Nclavipes\_HDX #1518 RT: 9.46 AV: 1 NL: 1.75E7  
 T: FTMS + p ESI Full ms [100.00-1500.00]



Nclavipes\_HDX #1518 RT: 9.46 AV: 1 NL: 9.55E4  
 T: FTMS + p ESI Full ms [100.00-1500.00]

