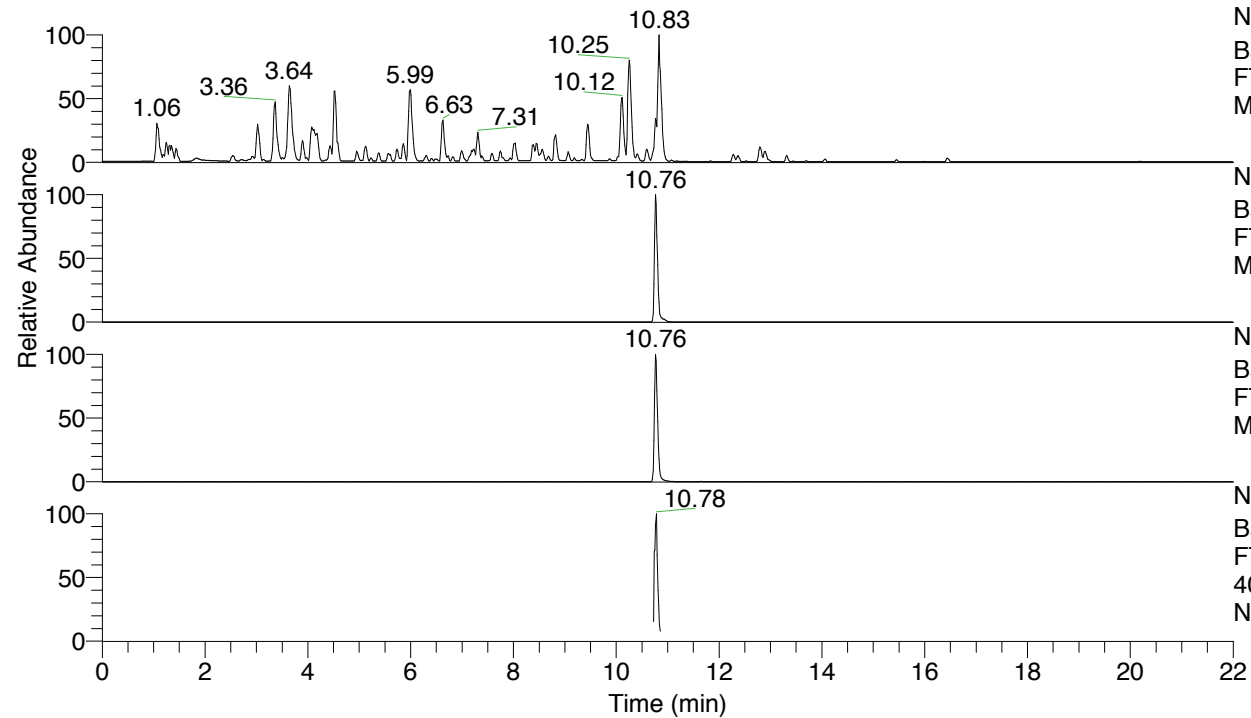


RT: 0.00 - 22.01



NL: 4.79E7
 Base Peak m/z= 100.00000-1500.00000 F:
 FTMS + p ESI Full ms [100.00-1500.00]
 MS Nclavipes

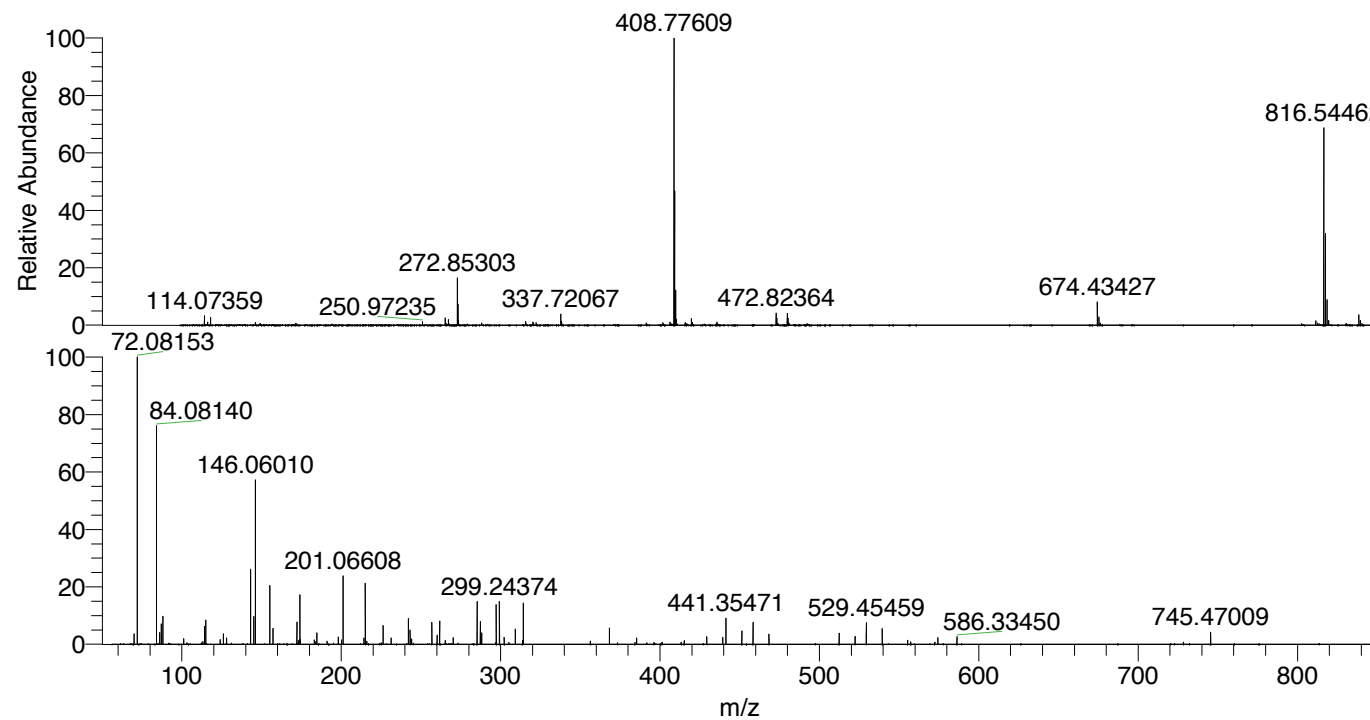
NL: 1.18E7
 Base Peak m/z= 816.54189-816.55005 F:
 FTMS + p ESI Full ms [100.00-1500.00]
 MS Nclavipes

NL: 1.65E7
 Base Peak m/z= 408.77486-408.77894 F:
 FTMS + p ESI Full ms [100.00-1500.00]
 MS Nclavipes

NL: 1.21E6
 Base Peak m/z= 50.00000-1500.00000 F:
 FTMS + p ESI d Full ms2
 408.78@hcd35.00 [56.67-850.00] MS
 Nclavipes

Nclavipes#4276-4305 RT: 10.74-10.81
 F: FTMS + p ESI d Full ms2 408.78 ...
 m/z= 50.00000-1000.00000

m/z	Intensity	Relative
70.06587	32068.9	3.66
72.08153	875937.8	100.00
84.08140	679706.4	77.60
86.09700	36191.6	4.13
87.05588	63063.5	7.20
88.03986	86930.0	9.92
101.10773	17435.5	1.99
114.09170	54921.3	6.27
115.05054	73684.3	8.41
126.09155	31686.5	3.62
128.10700	19350.5	2.21
143.11798	228460.0	26.08
145.13352	84172.5	9.61
146.06010	502405.2	57.36
155.11794	183090.1	20.90
157.13384	47912.8	5.47
172.14446	67673.0	7.73
174.05492	150045.0	17.13
184.65484	36397.2	4.16
198.05521	21875.6	2.50
201.06608	207668.1	23.71
214.19169	19217.8	2.19
215.08169	186547.7	21.30
226.19123	59339.1	6.77
231.21818	18994.1	2.17
242.14945	79709.4	9.10
243.07664	43377.2	4.95
244.06006	16664.3	1.90
256.71793	68250.8	7.79
260.10365	27345.9	3.12
261.71012	71723.8	8.19
270.22340	19875.9	2.27
285.22853	129987.5	14.84
287.24426	69924.0	7.98
288.09799	35149.3	4.01
297.22866	120699.6	13.78
299.24374	131932.2	15.06
302.25528	20847.7	2.38
309.22899	46349.8	5.29
314.25529	125751.6	14.36
368.30190	49505.4	5.65
385.32782	18715.9	2.14
429.35545	22843.2	2.61
439.33914	21132.2	2.41
441.35471	81131.6	9.26
451.33837	41723.0	4.76
458.38071	67337.8	7.69
468.36527	30387.2	3.47
512.42812	34929.3	3.99
522.41438	23705.3	2.71
529.45459	66041.3	7.54
539.43827	46816.3	5.34
574.33319	20642.6	2.36
586.33450	23327.2	2.66
745.47009	36385.7	4.15



NL: 1.65E7
 Nclavipes#4285 RT: 10.76
 AV: 1 T: FTMS + p ESI
 Full ms [100.00-1500.00]

NL: 8.72E5
 Nclavipes#4274-4312 RT:
 10.74-10.81 AV: 6 F:
 FTMS + p ESI d Full ms2
 408.78@hcd35.00
 [56.67-850.00]

Nclavipes#4276-4305 RT: 10.74-10.81 AV: 6

F: FTMS + p ESI d Full ms2 408.78@hcd35.00 [56.67-850.00]

m/z= 50.00000-1000.00000

m/z	Intensity	Relative
70.06587	32068.9	3.66
72.08153	875937.8	100.00
84.08140	679706.4	77.60
84.08661	10800.2	1.23
86.09700	36191.6	4.13
87.05588	63063.5	7.20
88.03986	86930.0	9.92
101.10773	17435.5	1.99
103.12334	4828.5	0.55
112.07588	4926.7	0.56
113.10783	8282.5	0.95
114.09170	54921.3	6.27
115.05054	73684.3	8.41
124.07616	14679.0	1.68
126.09155	31686.5	3.62
128.10700	19350.5	2.21
143.11798	228460.0	26.08
145.13352	84172.5	9.61
146.06010	502405.2	57.36
155.11794	183090.1	20.90
157.13384	47912.8	5.47
172.14446	67673.0	7.73
173.07134	11316.0	1.29
174.05492	150045.0	17.13
174.16045	15651.5	1.79
183.11287	13709.8	1.57
184.14471	8223.6	0.94
184.65484	36397.2	4.16
191.08215	9105.4	1.04
198.05521	21875.6	2.50
200.07061	10957.9	1.25
200.13945	12728.6	1.45
201.06608	207668.1	23.71
214.19169	19217.8	2.19
215.08169	186547.7	21.30
216.06558	9896.3	1.13
225.12316	4771.9	0.54
226.19123	59339.1	6.77
231.21818	18994.1	2.17

Nclavipes#4276-4305 RT: 10.74-10.81 AV: 6

F: FTMS + p ESI d Full ms2 408.78@hcd35.00 [56.67-850.00]

m/z= 50.00000-1000.00000

m/z	Intensity	Relative
242.14945	79709.4	9.10
243.07664	43377.2	4.95
243.21782	15543.0	1.77
244.06006	16664.3	1.90
256.71793	68250.8	7.79
260.10365	27345.9	3.12
261.71012	71723.8	8.19
265.23187	11326.4	1.29
270.22340	19875.9	2.27
285.22853	129987.5	14.84
287.24426	69924.0	7.98
288.09799	35149.3	4.01
297.22866	120699.6	13.78
299.24374	131932.2	15.06
302.25528	20847.7	2.38
305.22606	5092.3	0.58
309.22899	46349.8	5.29
313.73950	12024.2	1.37
314.25529	125751.6	14.36
356.30270	9467.2	1.08
368.30190	49505.4	5.65
373.32960	4791.8	0.55
384.26022	4895.6	0.56
385.32782	18715.9	2.14
391.75032	4710.4	0.54
396.26102	5133.1	0.59
401.28646	6306.9	0.72
413.28699	6856.7	0.78
415.19706	12142.5	1.39
429.35545	22843.2	2.61
439.33914	21132.2	2.41
441.35471	81131.6	9.26
451.33837	41723.0	4.76
458.38071	67337.8	7.69
468.36527	30387.2	3.47
512.42812	34929.3	3.99
522.41438	23705.3	2.71
529.45459	66041.3	7.54
539.43827	46816.3	5.34

Nclavipes#4276-4305 RT: 10.74-10.81 AV: 6

F: FTMS + p ESI d Full ms2 408.78@hcd35.00 [56.67-850.00]

m/z= 50.00000-1000.00000

m/z	Intensity	Relative
555.39756	12709.2	1.45
557.30681	7510.4	0.86
572.42607	6446.9	0.74
574.33319	20642.6	2.36
586.33450	23327.2	2.66
728.44375	6092.3	0.70
745.47009	36385.7	4.15