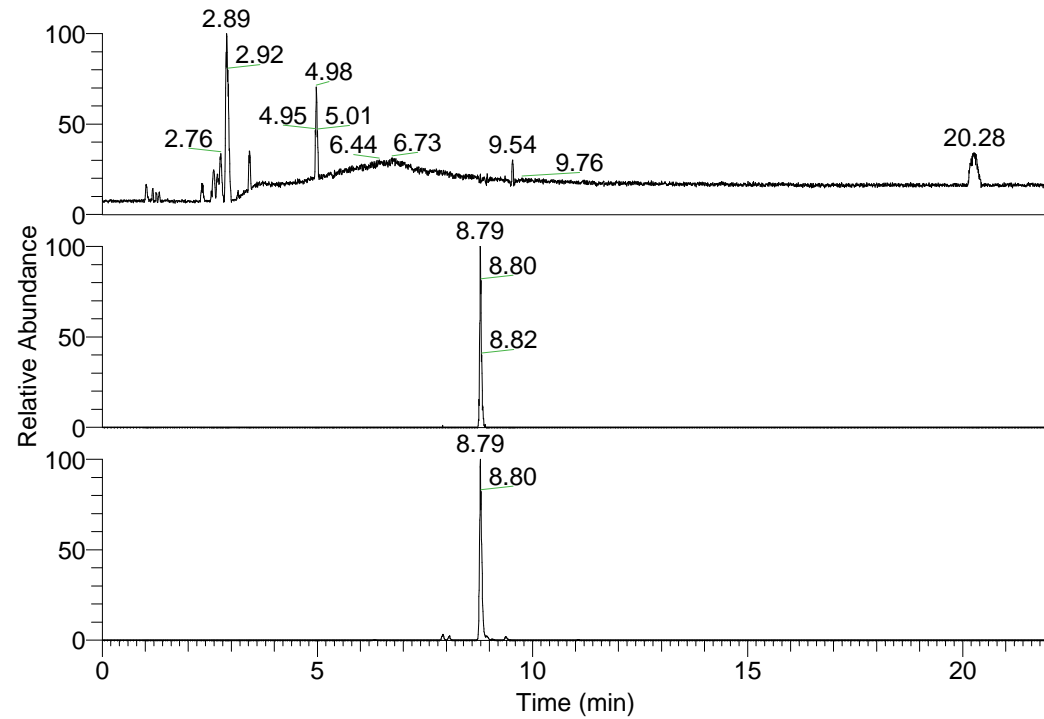


RT: 0.00 - 22.01



NL: 1.01E8
 Base Peak m/z=
 100.00000-1500.00000 F:
 FTMS + p ESI Full ms
 [100.00-1500.00] MS
 Nclavipes_HDX

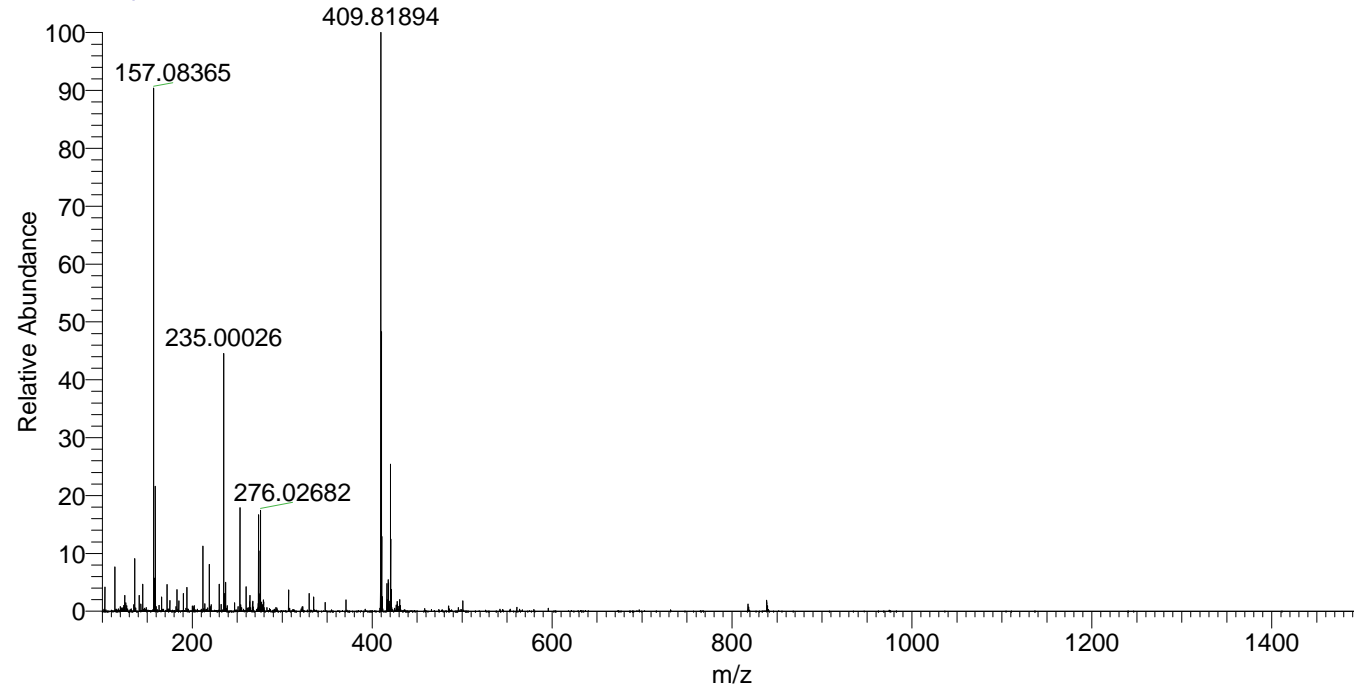
NL: 2.85E5
 Base Peak m/z=
 817.62038-817.62856 F:
 FTMS + p ESI Full ms
 [100.00-1500.00] MS
 Nclavipes_HDX

NL: 2.26E7
 Base Peak m/z=
 409.81724-409.82134 F:
 FTMS + p ESI Full ms
 [100.00-1500.00] MS
 Nclavipes_HDX

Nclavipes_HDX#1408 RT: 8.79
 T: FTMS + p ESI Full ms [100.00-1500.00]
 m/z= 817.00000-818.00000

m/z	Intensity	Relative	Delta (ppm)	Composition
817.62372	285067.4	100.00	-0.25	C ₃₉ H ₅₃ ² H ₁₅ O ₇ N ₁₁
			1.65	C ₃₉ H ₅₁ ² H ₁₆ O ₇ N ₁₁
			-2.14	C ₃₉ H ₅₅ ² H ₁₄ O ₇ N ₁₁
			3.54	C ₃₉ H ₄₉ ² H ₁₇ O ₇ N ₁₁
			-4.04	C ₃₉ H ₅₇ ² H ₁₃ O ₇ N ₁₁

Nclavipes_HDX #1408 RT: 8.79 AV: 1 NL: 2.24E7
 T: FTMS + p ESI Full ms [100.00-1500.00]



Nclavipes_HDX #1408 RT: 8.79 AV: 1 NL: 2.84E5
 T: FTMS + p ESI Full ms [100.00-1500.00]

