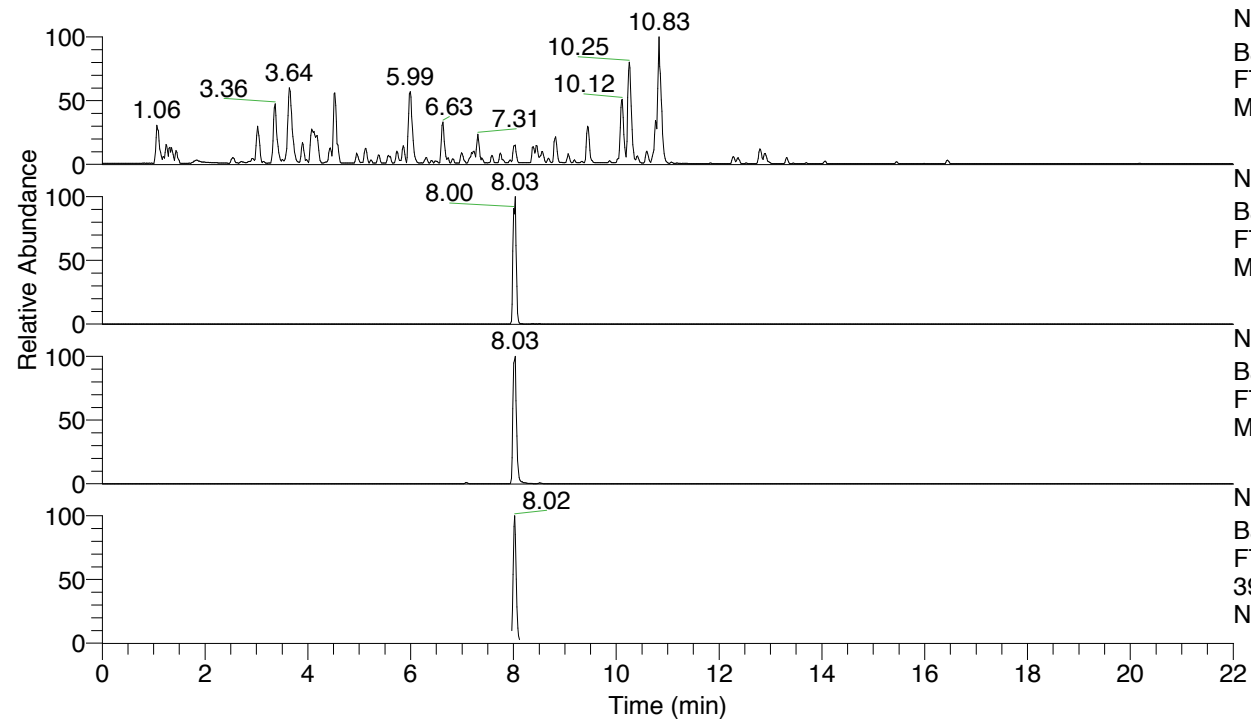


RT: 0.00 - 22.01



NL: 4.79E7
 Base Peak m/z= 100.00000-1500.00000 F:
 FTMS + p ESI Full ms [100.00-1500.00]
 MS Nclavipes

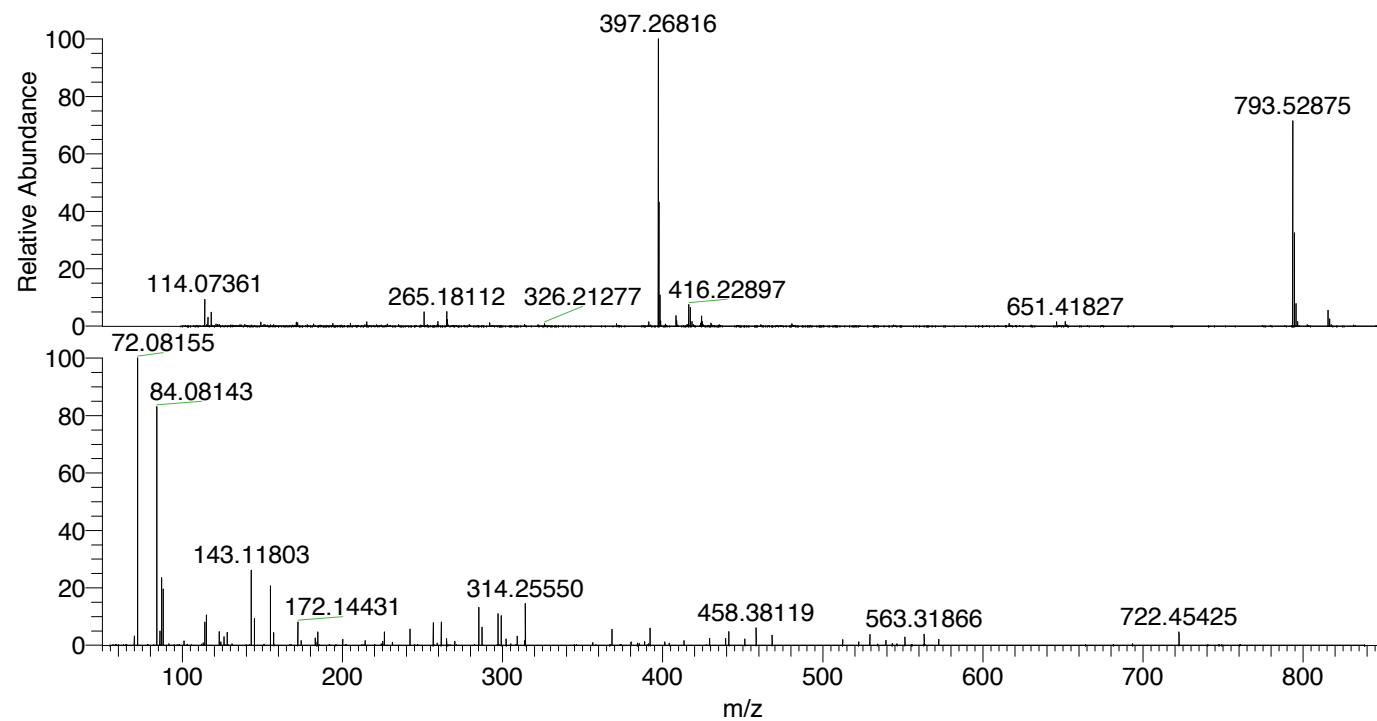
NL: 5.26E6
 Base Peak m/z= 793.52601-793.53395 F:
 FTMS + p ESI Full ms [100.00-1500.00]
 MS Nclavipes

NL: 7.32E6
 Base Peak m/z= 397.26691-397.27089 F:
 FTMS + p ESI Full ms [100.00-1500.00]
 MS Nclavipes

NL: 7.07E5
 Base Peak m/z= 50.00000-1500.00000 F:
 FTMS + p ESI d Full ms2
 397.27@hcd35.00 [55.33-830.00] MS
 Nclavipes

Nclavipes#3182-3206 RT: 7.99-8.05 AV:
 F: FTMS + p ESI d Full ms2 397.27 ...
 m/z= 50.00000-1000.00000

m/z	Intensity	Relative
70.06589	17114.2	3.24
72.08155	528453.0	100.00
84.08143	452200.1	85.57
84.08665	6799.4	1.29
86.09715	26059.2	4.93
87.05592	128305.1	24.28
88.03995	104162.9	19.71
101.10790	7816.7	1.48
114.09180	43135.7	8.16
115.05065	55348.9	10.47
123.04448	25102.4	4.75
126.09185	16164.3	3.06
128.10732	24438.9	4.62
143.11803	137632.3	26.04
145.13348	49061.7	9.28
155.11809	110131.3	20.84
157.13369	23143.9	4.38
172.14431	42886.0	8.12
174.16062	8533.7	1.61
183.11316	13425.7	2.54
184.65469	25324.0	4.79
200.13985	10953.7	2.07
214.19201	8773.2	1.66
225.12387	7170.8	1.36
226.19217	24594.2	4.65
242.14989	30871.3	5.84
256.71770	41613.5	7.87
261.70983	43313.9	8.20
265.08213	12560.0	2.38
270.22329	7196.5	1.36
285.22831	69801.3	13.21
287.24445	33410.9	6.32
297.22861	58084.0	10.99
299.24432	55575.2	10.52
302.25549	11536.0	2.18
309.22897	16705.8	3.16
313.73921	8390.8	1.59
314.25550	76733.9	14.52
368.30173	28982.5	5.48
388.75542	6872.7	1.30
392.18208	31663.4	5.99
413.28803	8431.3	1.60
429.35549	12490.2	2.36
439.33868	13285.7	2.51
441.35516	25561.5	4.84
451.33980	11288.4	2.14
458.38119	32200.5	6.09
468.36502	18507.2	3.50
512.43081	10446.4	1.98
529.45388	19763.0	3.74
539.43784	9128.1	1.73
551.31769	15781.2	2.99
563.31866	19979.6	3.78
572.42254	10832.7	2.05
722.45425	24739.8	4.68



NL: 7.29E6
 Nclavipes#3199 RT: 8.03
 AV: 1 T: FTMS + p ESI
 Full lock ms
 [100.00-1500.00]

NL: 5.27E5
 Nclavipes#3180-3211 RT:
 7.99-8.05 AV: 5 F: FTMS
 + p ESI d Full ms2
 397.27@hcd35.00
 [55.33-830.00]

Nclavipes#3182-3206 RT: 7.99-8.05 AV: 5

F: FTMS + p ESI d Full ms2 397.27@hcd35.00 [55.33-830.00]

m/z= 50.00000-1000.00000

m/z	Intensity	Relative
70.02945	4921.6	0.93
70.06589	17114.2	3.24
72.08155	528453.0	100.00
84.08143	452200.1	85.57
84.08665	6799.4	1.29
86.09715	26059.2	4.93
87.05592	128305.1	24.28
88.03995	104162.9	19.71
101.10790	7816.7	1.48
113.10800	4299.0	0.81
114.09180	43135.7	8.16
115.05065	55348.9	10.47
123.04448	25102.4	4.75
124.07603	6096.4	1.15
126.09185	16164.3	3.06
128.10732	24438.9	4.62
143.11803	137632.3	26.04
145.13348	49061.7	9.28
155.11809	110131.3	20.84
157.13369	23143.9	4.38
172.14431	42886.0	8.12
174.16062	8533.7	1.61
183.11316	13425.7	2.54
184.14477	5914.9	1.12
184.65469	25324.0	4.79
200.13985	10953.7	2.07
214.19201	8773.2	1.66
225.12387	7170.8	1.36
226.19217	24594.2	4.65
231.21884	5476.0	1.04
242.14989	30871.3	5.84
256.71770	41613.5	7.87
259.17726	3912.8	0.74
261.70983	43313.9	8.20
265.08213	12560.0	2.38
265.23090	4751.5	0.90
270.22329	7196.5	1.36
285.22831	69801.3	13.21
287.24445	33410.9	6.32

Nclavipes#3182-3206 RT: 7.99-8.05 AV: 5

F: FTMS + p ESI d Full ms2 397.27@hcd35.00 [55.33-830.00]

m/z= 50.00000-1000.00000

m/z	Intensity	Relative
297.22861	58084.0	10.99
299.24432	55575.2	10.52
302.25549	11536.0	2.18
305.22589	2721.5	0.51
309.22897	16705.8	3.16
313.73921	8390.8	1.59
314.25550	76733.9	14.52
356.30253	4915.7	0.93
368.30173	28982.5	5.48
380.24308	6392.4	1.21
384.25875	3647.9	0.69
385.32830	3306.7	0.63
388.75542	6872.7	1.30
392.18208	31663.4	5.99
401.28680	6292.6	1.19
404.18110	3713.4	0.70
413.28803	8431.3	1.60
429.35549	12490.2	2.36
439.33868	13285.7	2.51
441.35516	25561.5	4.84
451.33980	11288.4	2.14
458.38119	32200.5	6.09
468.36502	18507.2	3.50
512.43081	10446.4	1.98
522.41279	6408.2	1.21
529.45388	19763.0	3.74
539.43784	9128.1	1.73
543.39951	3061.7	0.58
551.31769	15781.2	2.99
563.31866	19979.6	3.78
572.42254	10832.7	2.05
693.42364	2910.3	0.55
722.45425	24739.8	4.68