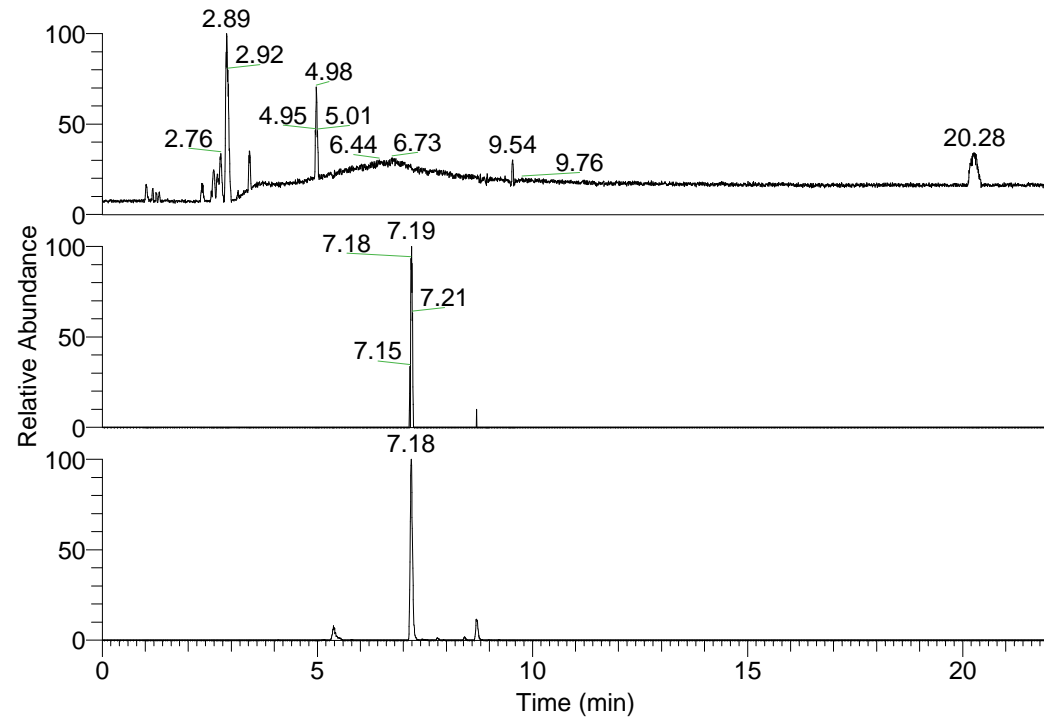


RT: 0.00 - 22.01



NL: 1.01E8
 Base Peak m/z=
 100.00000-1500.00000 F:
 FTMS + p ESI Full ms
 [100.00-1500.00] MS
 Nclavipes_HDX

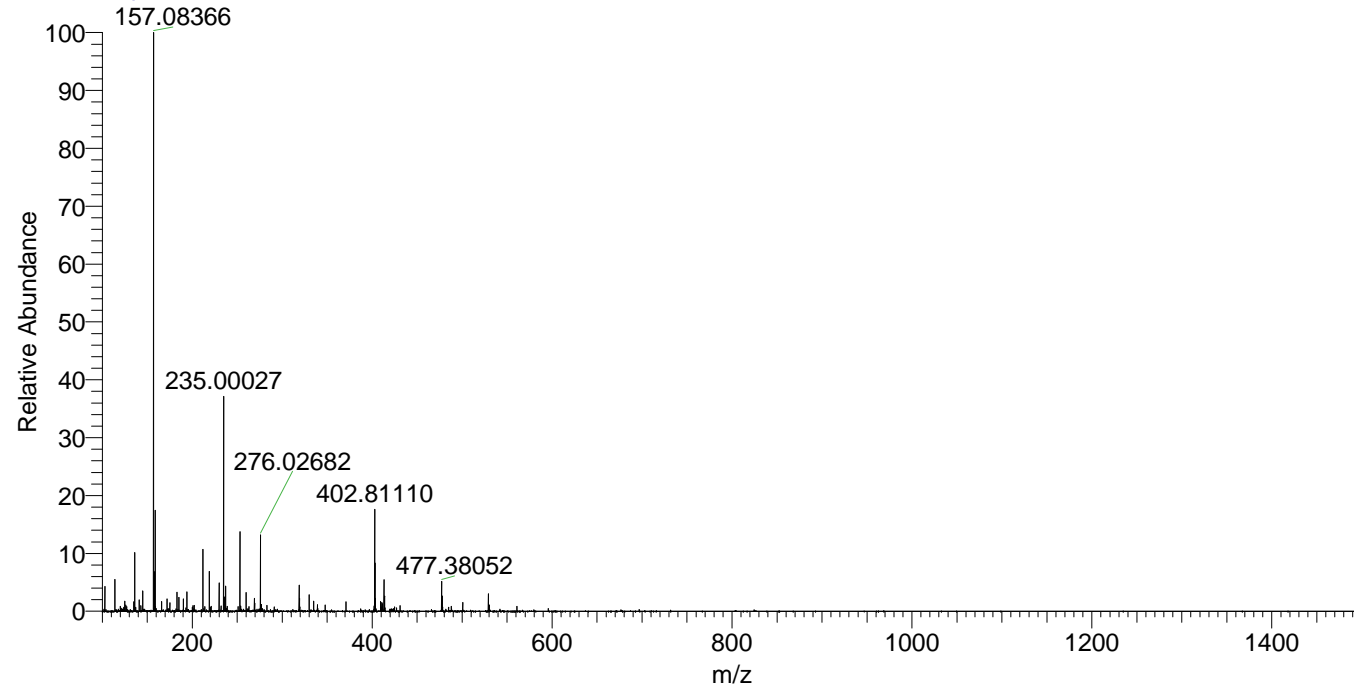
NL: 3.30E4
 Base Peak m/z=
 803.60480-803.61284 F:
 FTMS + p ESI Full ms
 [100.00-1500.00] MS
 Nclavipes_HDX

NL: 4.76E6
 Base Peak m/z=
 402.80945-402.81347 F:
 FTMS + p ESI Full ms
 [100.00-1500.00] MS
 Nclavipes_HDX

Nclavipes_HDX#1146 RT: 7.19
 T: FTMS + p ESI Full ms [100.00-1500.00]
 m/z= 803.00000-804.00000

m/z	Intensity	Relative	Delta (ppm)	Composition
803.60834	32991.6	100.00	0.08	C ₃₈ H ₅₁ ² H ₁₅ O ₇ N ₁₁
			-1.84	C ₃₈ H ₅₃ ² H ₁₄ O ₇ N ₁₁
			2.01	C ₃₈ H ₄₉ ² H ₁₆ O ₇ N ₁₁
			-3.77	C ₃₈ H ₅₅ ² H ₁₃ O ₇ N ₁₁
			3.94	C ₃₈ H ₄₇ ² H ₁₇ O ₇ N ₁₁

Nclavipes_HDX #1146 RT: 7.19 AV: 1 NL: 2.56E7
 T: FTMS + p ESI Full ms [100.00-1500.00]



Nclavipes_HDX #1146 RT: 7.19 AV: 1 NL: 3.25E4
 T: FTMS + p ESI Full ms [100.00-1500.00]

