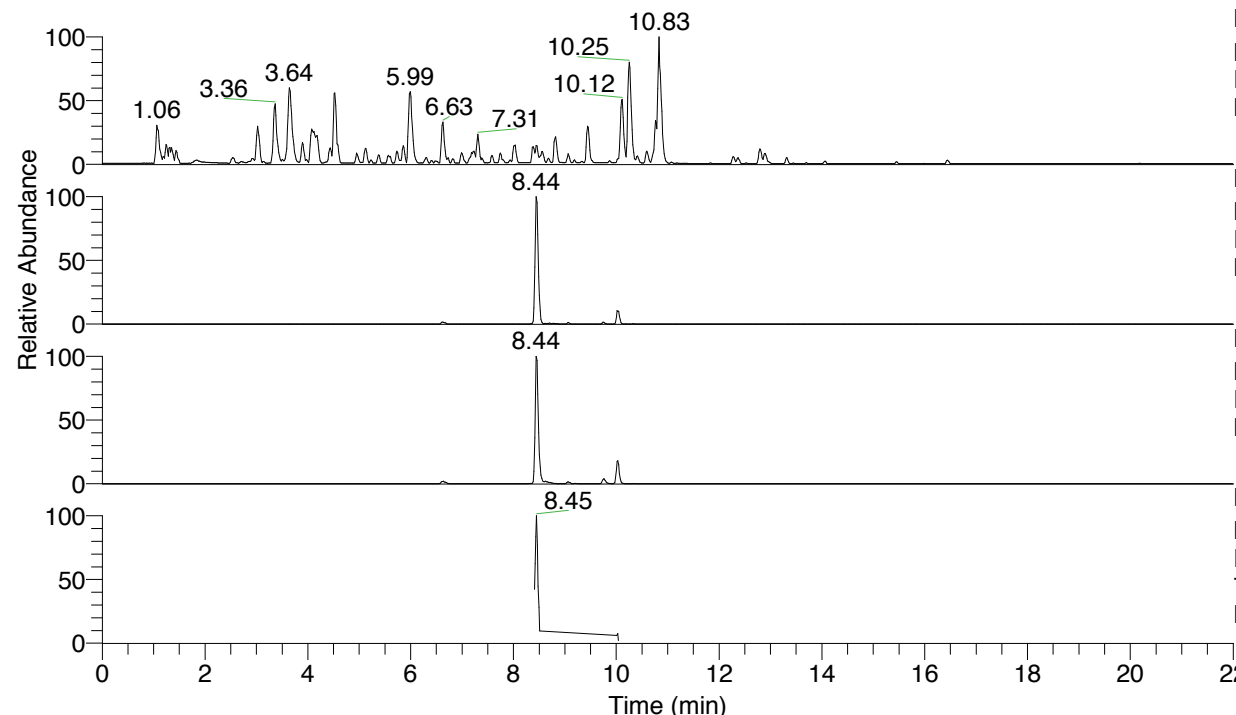


RT: 0.00 - 22.01



NL: 4.79E7  
 Base Peak m/z= 100.00000-1500.00000 F:  
 FTMS + p ESI Full ms [100.00-1500.00]  
 MS Nclavipes

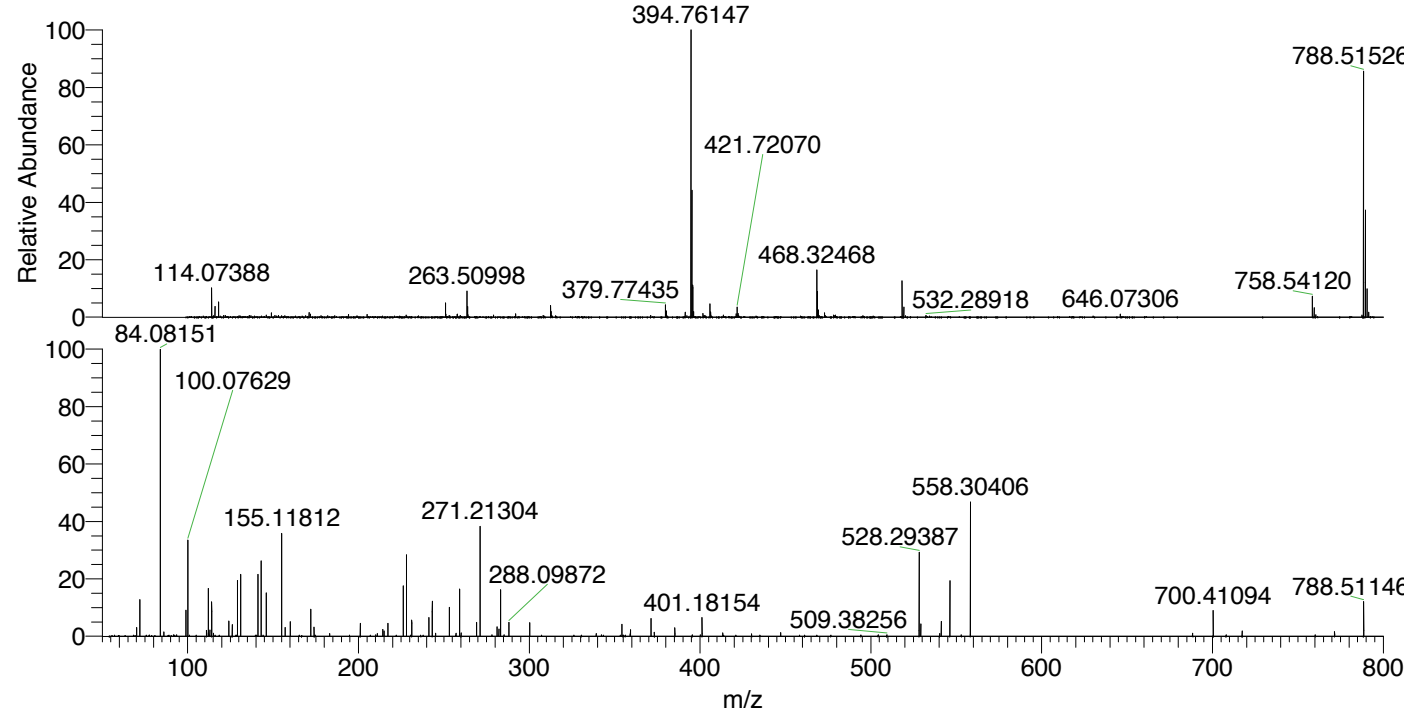
NL: 6.16E6  
 Base Peak m/z= 788.51073-788.51861 F:  
 FTMS + p ESI Full ms [100.00-1500.00]  
 MS Nclavipes

NL: 7.15E6  
 Base Peak m/z= 394.75928-394.76322 F:  
 FTMS + p ESI Full ms [100.00-1500.00]  
 MS Nclavipes

NL: 4.31E5  
 Base Peak m/z= 50.00000-1500.00000 F:  
 FTMS + p ESI d Full ms2  
 788.51@hcd35.00 [54.67-820.00] MS  
 Nclavipes

Nclavipes#3348-3387 RT: 8.41-8.51 AV:  
 F: FTMS + p ESI d Full ms2 788.51 ...  
 m/z= 50.00000-1000.00000

m/z	Intensity	Relative
70.06596	6949.1	3.00
72.08162	27850.3	12.01
84.08151	231814.5	100.00
84.08599	5237.0	2.26
86.09737	3360.7	1.45
99.09239	20488.7	8.84
100.07628	76994.6	33.21
111.09220	4433.5	1.91
112.07626	36547.4	15.77
113.10772	4787.3	2.07
114.09195	26314.8	11.35
124.07617	11745.3	5.07
126.09176	9075.3	3.91
129.10253	44754.9	19.31
131.11828	49675.8	21.43
141.10246	48720.8	21.02
143.11812	57402.8	24.76
146.06044	32939.3	14.21
155.11812	80738.1	34.83
157.13407	6623.3	2.86
160.14496	11459.4	4.94
172.14482	20469.7	8.83
174.05522	7031.1	3.03
201.06617	9896.1	4.27
214.19208	5277.3	2.28
215.08245	3994.3	1.72
217.20309	10244.8	4.42
226.19160	38874.9	16.77
228.13480	63411.6	27.35
231.21877	12216.6	5.27
241.20256	14558.3	6.28
243.21843	27391.4	11.82
253.20266	22955.9	9.90
259.21309	37078.6	15.99
269.19787	10611.3	4.58
271.21304	84492.6	36.45
281.19861	7170.3	3.09
282.23000	5591.0	2.41
283.21299	36008.6	15.53
288.09872	10827.3	4.67
300.24002	10400.7	4.49
354.28769	9120.2	3.93
359.31557	5142.8	2.22
371.31372	13815.8	5.96
385.25678	6714.7	2.90
401.18154	14271.5	6.16
528.29388	66425.5	28.65
529.27786	9301.8	4.01
541.27680	11569.9	4.99
546.30338	42793.9	18.46
558.30406	105238.1	45.40
700.41094	19542.5	8.43
717.43743	3961.2	1.71
771.48368	3445.6	1.49
788.51146	26508.3	11.44



NL: 7.00E6  
 Nclavipes#3361 RT: 8.44  
 AV: 1 T: FTMS + p ESI  
 Full lock ms  
 [100.00-1500.00]

NL: 2.49E5  
 Nclavipes#3348-3381 RT:  
 8.41-8.50 AV: 7 F: FTMS  
 + p ESI d Full ms2  
 788.51@hcd35.00  
 [54.67-820.00]

Nclavipes#3348-3387 RT: 8.41-8.51 AV: 8

F: FTMS + p ESI d Full ms2 788.51@hcd35.00 [54.67-820.00]

m/z= 50.00000-1000.00000

m/z	Intensity	Relative
70.06596	6949.1	3.00
72.08162	27850.3	12.01
84.08151	231814.5	100.00
84.08599	5237.0	2.26
86.09737	3360.7	1.45
99.09239	20488.7	8.84
100.07027	1178.6	0.51
100.07628	76994.6	33.21
111.09220	4433.5	1.91
112.07626	36547.4	15.77
113.10772	4787.3	2.07
114.09195	26314.8	11.35
115.05096	2441.4	1.05
124.07617	11745.3	5.07
126.09176	9075.3	3.91
129.10253	44754.9	19.31
131.11828	49675.8	21.43
141.10246	48720.8	21.02
143.11812	57402.8	24.76
146.06044	32939.3	14.21
155.11812	80738.1	34.83
157.13407	6623.3	2.86
160.14496	11459.4	4.94
172.14482	20469.7	8.83
174.05522	7031.1	3.03
183.11313	2041.9	0.88
201.06617	9896.1	4.27
211.10918	2095.6	0.90
214.19208	5277.3	2.28
215.08245	3994.3	1.72
217.20309	10244.8	4.42
226.19160	38874.9	16.77
228.13480	63411.6	27.35
231.21877	12216.6	5.27
241.20256	14558.3	6.28
243.21843	27391.4	11.82
245.16280	2410.2	1.04
253.20266	22955.9	9.90
257.16153	2400.3	1.04

Nclavipes#3348-3387 RT: 8.41-8.51 AV: 8

F: FTMS + p ESI d Full ms2 788.51@hcd35.00 [54.67-820.00]

m/z= 50.00000-1000.00000

m/z	Intensity	Relative
259.21309	37078.6	15.99
260.10379	2596.7	1.12
269.19787	10611.3	4.58
271.21304	84492.6	36.45
281.19861	7170.3	3.09
282.23000	5591.0	2.41
283.21299	36008.6	15.53
285.22543	1203.3	0.52
288.09872	10827.3	4.67
300.24002	10400.7	4.49
339.20277	1996.6	0.86
342.28698	1202.1	0.52
354.28769	9120.2	3.93
359.17012	1914.8	0.83
359.31557	5142.8	2.22
371.31372	13815.8	5.96
373.25698	3231.5	1.39
385.25678	6714.7	2.90
401.18154	14271.5	6.16
413.32192	2669.2	1.15
430.20512	1867.5	0.81
447.23695	2963.8	1.28
528.29388	66425.5	28.65
529.27786	9301.8	4.01
540.29252	1958.2	0.84
541.27680	11569.9	4.99
546.30338	42793.9	18.46
558.30403	105238.1	45.40
688.41711	2263.1	0.98
700.41094	19542.5	8.43
717.43743	3961.2	1.71
760.19166	1228.1	0.53
771.48368	3445.6	1.49
788.51146	26508.3	11.44