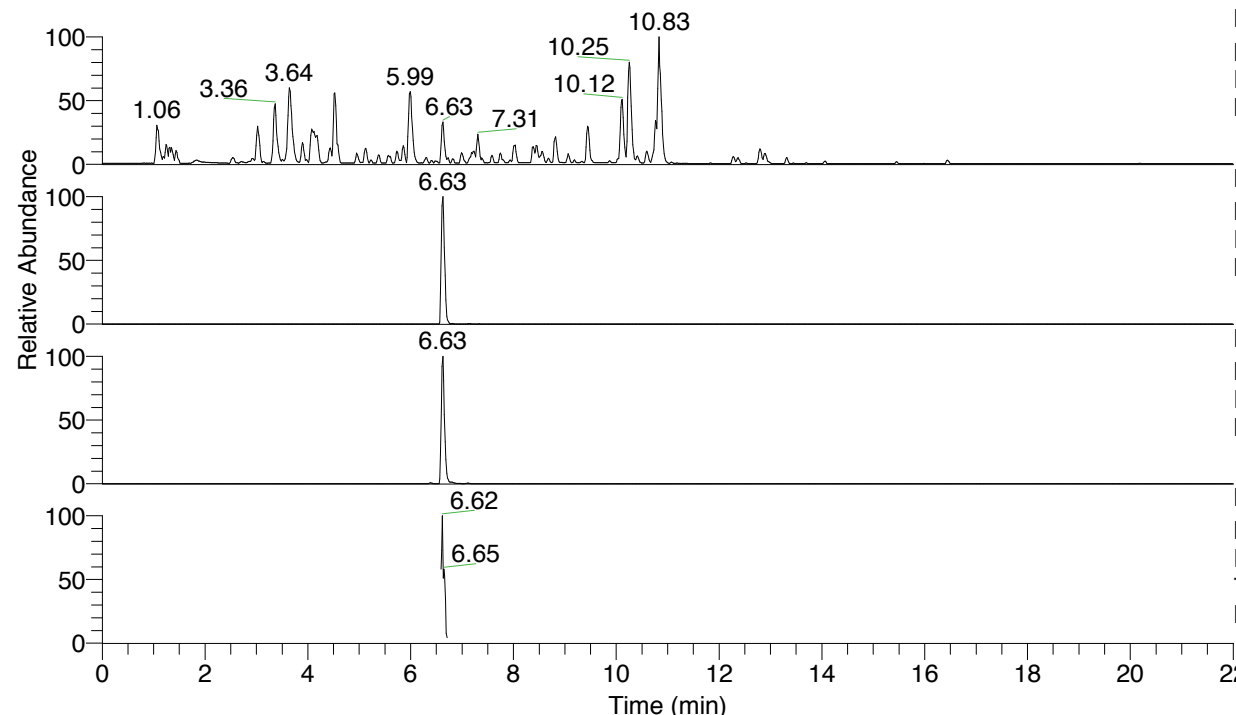


RT: 0.00 - 22.01



NL: 4.79E7  
 Base Peak m/z= 100.00000-1500.00000 F:  
 FTMS + p ESI Full ms [100.00-1500.00]  
 MS Nclavipes

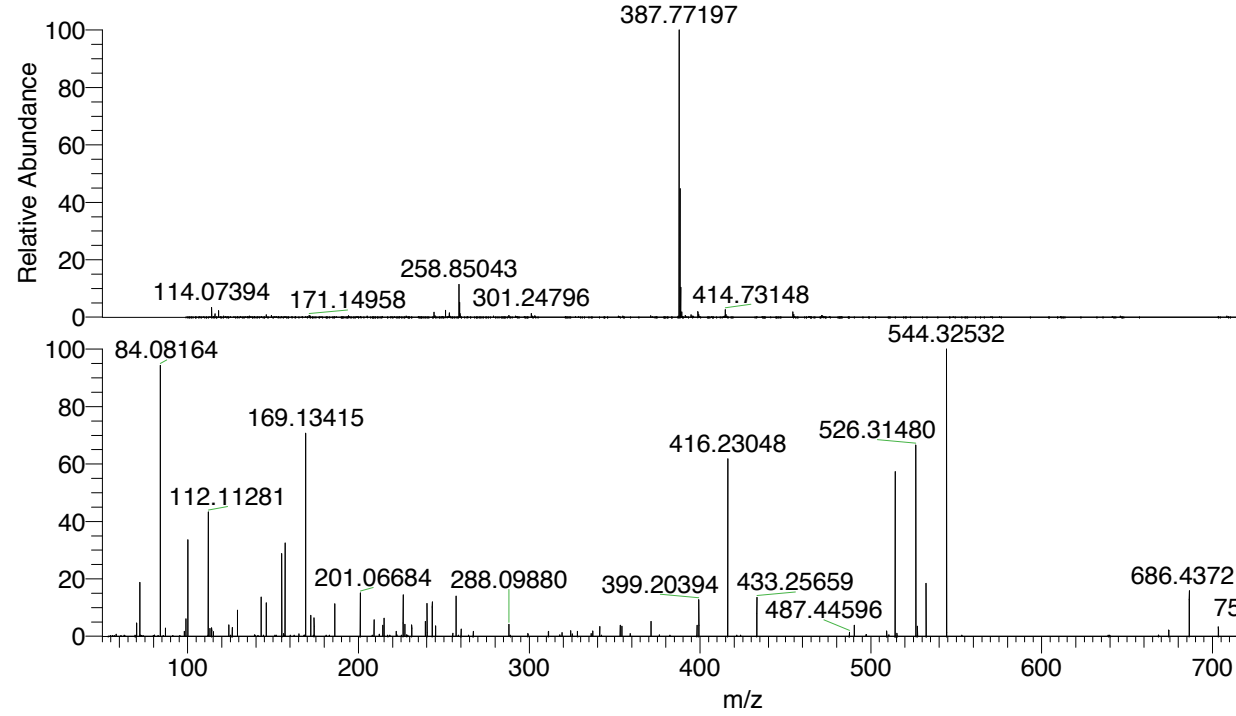
NL: 1.21E7  
 Base Peak m/z= 774.53153-774.53927 F:  
 FTMS + p ESI Full ms [100.00-1500.00]  
 MS Nclavipes

NL: 1.59E7  
 Base Peak m/z= 387.76967-387.77355 F:  
 FTMS + p ESI Full ms [100.00-1500.00]  
 MS Nclavipes

NL: 5.78E5  
 Base Peak m/z= 50.00000-1500.00000 F:  
 FTMS + p ESI d Full ms2  
 774.53@hcd35.00 [54.00-810.00] MS  
 Nclavipes

Nclavipes#2626-2655 RT: 6.59-6.66 AV:  
 F: FTMS + p ESI d Full ms2 774.53 ...  
 m/z= 50.00000-1000.00000

m/z	Intensity	Relative
70.06602	15904.8	4.58
72.08171	68769.9	19.81
84.08163	346495.7	99.82
99.09246	21086.5	6.07
100.07644	118794.8	34.22
112.07643	86636.1	24.96
112.11275	155983.8	44.94
113.10831	10498.5	3.02
114.09211	10605.5	3.06
124.07629	13656.5	3.93
126.09203	10989.6	3.17
129.13946	33138.7	9.55
143.11846	49690.4	14.32
146.06061	43767.4	12.61
155.11842	102322.8	29.48
157.13406	113377.2	32.66
169.13405	251794.7	72.54
172.14519	26637.3	7.67
174.05606	22721.3	6.55
174.16112	13408.2	3.86
186.16103	38815.4	11.18
201.06678	52989.9	15.27
209.12911	18948.6	5.46
214.19272	13208.2	3.81
215.08230	24713.6	7.12
226.15584	16413.6	4.73
226.19189	52434.3	15.11
227.22440	14126.2	4.07
231.21894	15729.0	4.53
239.22400	17294.8	4.98
240.20831	37904.8	10.92
243.18219	35681.2	10.28
243.21860	42428.3	12.22
245.23477	11046.5	3.18
257.23453	51998.3	14.98
288.09896	13836.3	3.99
341.26660	10282.2	2.96
353.26645	13182.0	3.80
354.25057	12551.6	3.62
371.27784	17285.2	4.98
398.22062	12830.6	3.70
399.20391	43290.7	12.47
399.34449	13979.4	4.03
416.23005	214848.6	61.89
433.25635	48547.4	13.99
490.31534	13479.7	3.88
514.31524	200910.5	57.88
526.31443	230606.5	66.43
527.29769	12673.9	3.65
532.32545	65405.6	18.84
544.32554	347119.2	100.00
686.43615	54220.4	15.62
703.46209	12093.6	3.48
757.50612	16392.5	4.72
774.53652	94709.6	27.28



NL: 1.59E7  
 Nclavipes#2641 RT: 6.63  
 AV: 1 T: FTMS + p ESI  
 Full ms [100.00-1500.00]

NL: 3.69E5  
 Nclavipes#2628-2658 RT:  
 6.60-6.66 AV: 5 F: FTMS  
 + p ESI d Full ms2  
 774.53@hcd35.00  
 [54.00-810.00]

Nclavipes#2626-2655 RT: 6.59-6.66 AV: 6

F: FTMS + p ESI d Full ms2 774.53@hcd35.00 [54.00-810.00]

m/z= 50.00000-1000.00000

m/z	Intensity	Relative
58.06603	2223.0	0.64
70.06602	15904.8	4.58
72.08171	68769.9	19.81
84.08163	346495.7	99.82
87.05613	10175.6	2.93
98.09735	5428.7	1.56
99.09246	21086.5	6.07
100.07644	118794.8	34.22
112.07643	86636.1	24.96
112.11275	155983.8	44.94
112.12015	1807.4	0.52
113.10831	10498.5	3.02
114.09211	10605.5	3.06
115.05072	5367.9	1.55
115.12331	2997.6	0.86
124.07629	13656.5	3.93
125.10798	2691.9	0.78
126.09203	10989.6	3.17
129.13946	33138.7	9.55
143.11846	49690.4	14.32
146.06061	43767.4	12.61
155.11842	102322.8	29.48
156.14986	2842.8	0.82
157.13406	113377.2	32.66
160.14521	2497.5	0.72
165.10280	2670.3	0.77
169.13405	251794.7	72.54
172.14519	26637.3	7.67
174.05606	22721.3	6.55
174.16112	13408.2	3.86
186.09247	4179.4	1.20
186.16103	38815.4	11.18
201.06678	52989.9	15.27
209.12911	18948.6	5.46
212.17678	2394.8	0.69
214.19272	13208.2	3.81
215.08230	24713.6	7.12
222.19793	5401.5	1.56
226.15584	16413.6	4.73

Nclavipes#2626-2655 RT: 6.59-6.66 AV: 6

F: FTMS + p ESI d Full ms2 774.53@hcd35.00 [54.00-810.00]

m/z= 50.00000-1000.00000

m/z	Intensity	Relative
226.19189	52434.3	15.11
227.22440	14126.2	4.07
231.21894	15729.0	4.53
239.22400	17294.8	4.98
240.20831	37904.8	10.92
243.18219	35681.2	10.28
243.21860	42428.3	12.22
245.23477	11046.5	3.18
255.21833	3136.1	0.90
257.23453	51998.3	14.98
260.10474	7679.1	2.21
260.20863	1938.6	0.56
267.21823	5321.2	1.53
288.09896	13836.3	3.99
299.24629	2970.8	0.86
311.24620	5257.2	1.51
319.21450	5003.4	1.44
324.24030	5962.9	1.72
325.22542	2658.6	0.77
328.27184	6621.9	1.91
336.24022	2771.7	0.80
337.22518	7914.1	2.28
341.26660	10282.2	2.96
353.26645	13182.0	3.80
354.25057	12551.6	3.62
359.17316	2975.3	0.86
371.27784	17285.2	4.98
398.22062	12830.6	3.70
399.20391	43290.7	12.47
399.34449	13979.4	4.03
416.23005	214848.6	61.89
433.25635	48547.4	13.99
487.44502	6377.2	1.84
490.31534	13479.7	3.88
497.28665	1971.7	0.57
509.28824	5706.7	1.64
514.31524	200910.5	57.88
515.29876	3173.8	0.91
526.31443	230606.5	66.43

Nclavipes#2626-2655 RT: 6.59-6.66 AV: 6

F: FTMS + p ESI d Full ms2 774.53@hcd35.00 [54.00-810.00]

m/z= 50.00000-1000.00000

m/z	Intensity	Relative
527.29769	12673.9	3.65
532.32545	65405.6	18.84
544.32554	347119.2	100.00
674.43694	6392.5	1.84
686.43615	54220.4	15.62
703.46209	12093.6	3.48
757.50612	16392.5	4.72
774.53652	94709.6	27.28