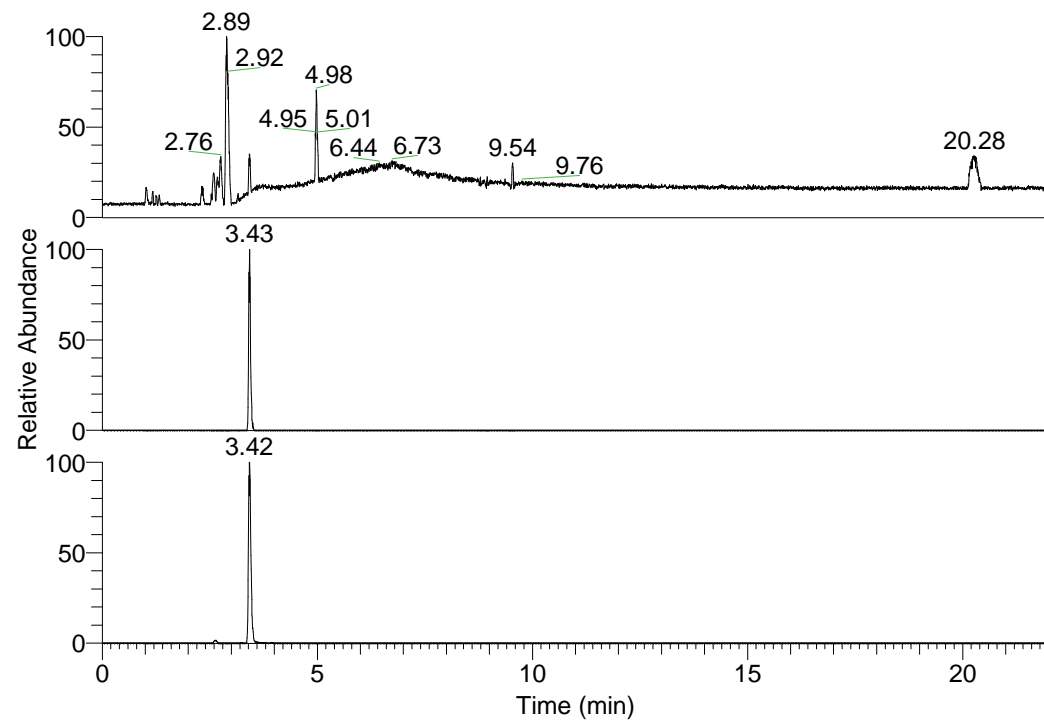


RT: 0.00 - 22.01



NL: 1.01E8
Base Peak m/z=
100.00000-1500.00000 F:
FTMS + p ESI Full ms
[100.00-1500.00] MS
Nclavipes_HDX

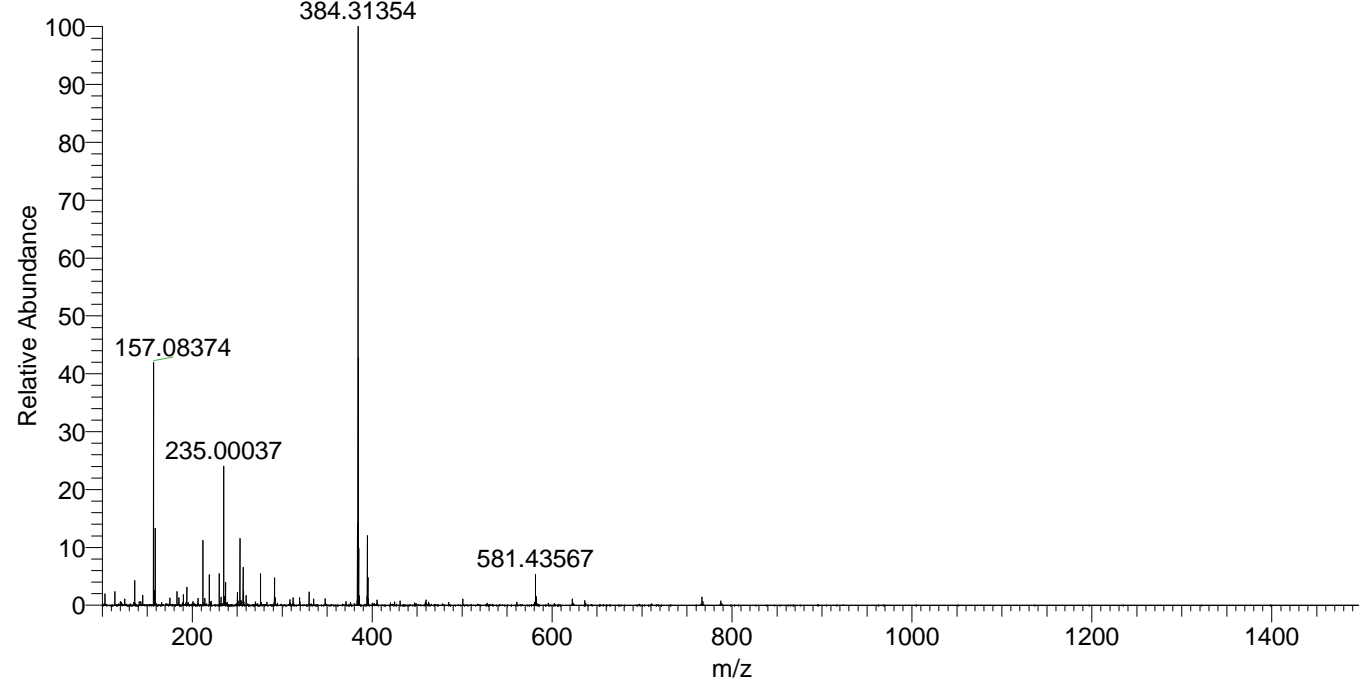
Nclavipes_HDX#534 RT: 3.43
T: FTMS + p ESI Full ms [100.00-1500.00]
m/z= 766.00000-767.00000

m/z	Intensity	Relative	Delta (ppm)	Composition
766.61328	496091.4	100.00	0.34	C ₃₆ H ₅₂ ² H ₁₅ O ₇ N ₁₀
			-1.68	C ₃₆ H ₅₄ ² H ₁₄ O ₇ N ₁₀
			2.36	C ₃₆ H ₅₀ ² H ₁₆ O ₇ N ₁₀
			-3.70	C ₃₆ H ₅₆ ² H ₁₃ O ₇ N ₁₀
			4.38	C ₃₆ H ₄₈ ² H ₁₇ O ₇ N ₁₀

NL: 4.96E5
Base Peak m/z=
766.60974-766.61740 F:
FTMS + p ESI Full ms
[100.00-1500.00] MS
Nclavipes_HDX

NL: 3.55E7
Base Peak m/z=
384.31192-384.31576 F:
FTMS + p ESI Full ms
[100.00-1500.00] MS
Nclavipes_HDX

Nclavipes_HDX #534 RT: 3.43 AV: 1 NL: 3.47E7
T: FTMS + p ESI Full ms [100.00-1500.00]



Nclavipes_HDX #534 RT: 3.43 AV: 1 NL: 4.95E5
T: FTMS + p ESI Full ms [100.00-1500.00]

