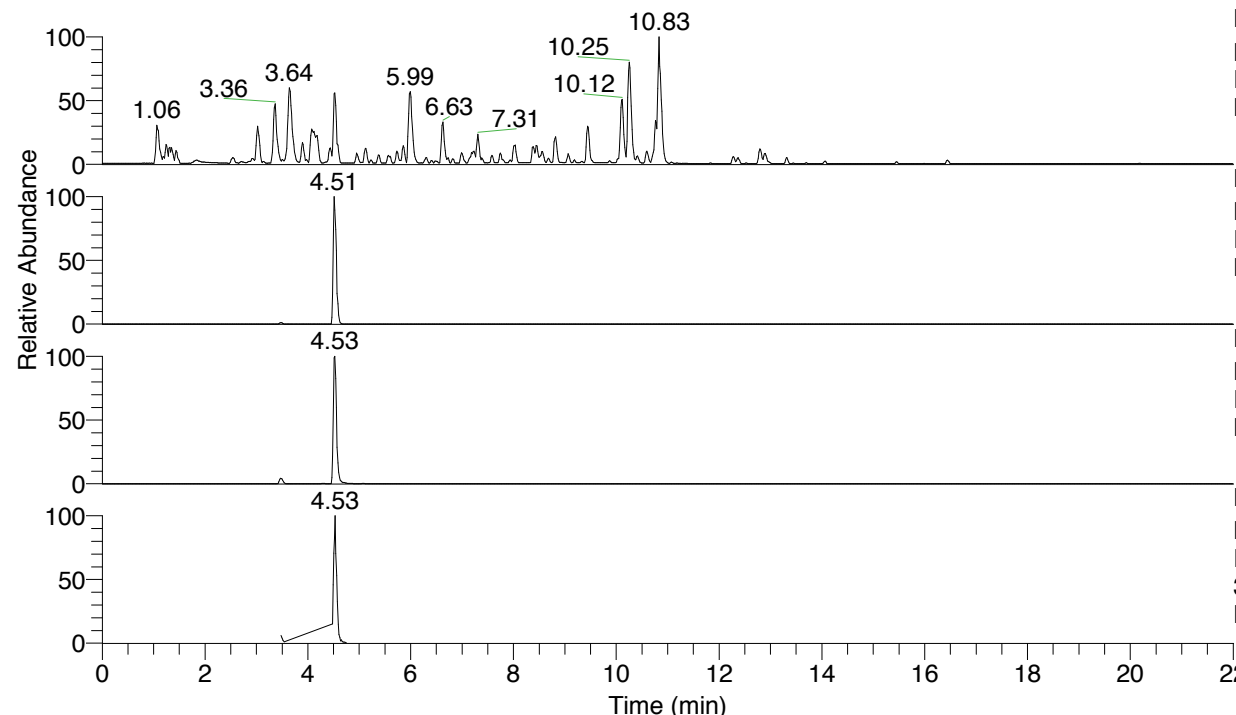


RT: 0.00 - 22.01



NL: 4.79E7
 Base Peak m/z= 100.00000-1500.00000 F:
 FTMS + p ESI Full ms [100.00-1500.00]
 MS Nclavipes

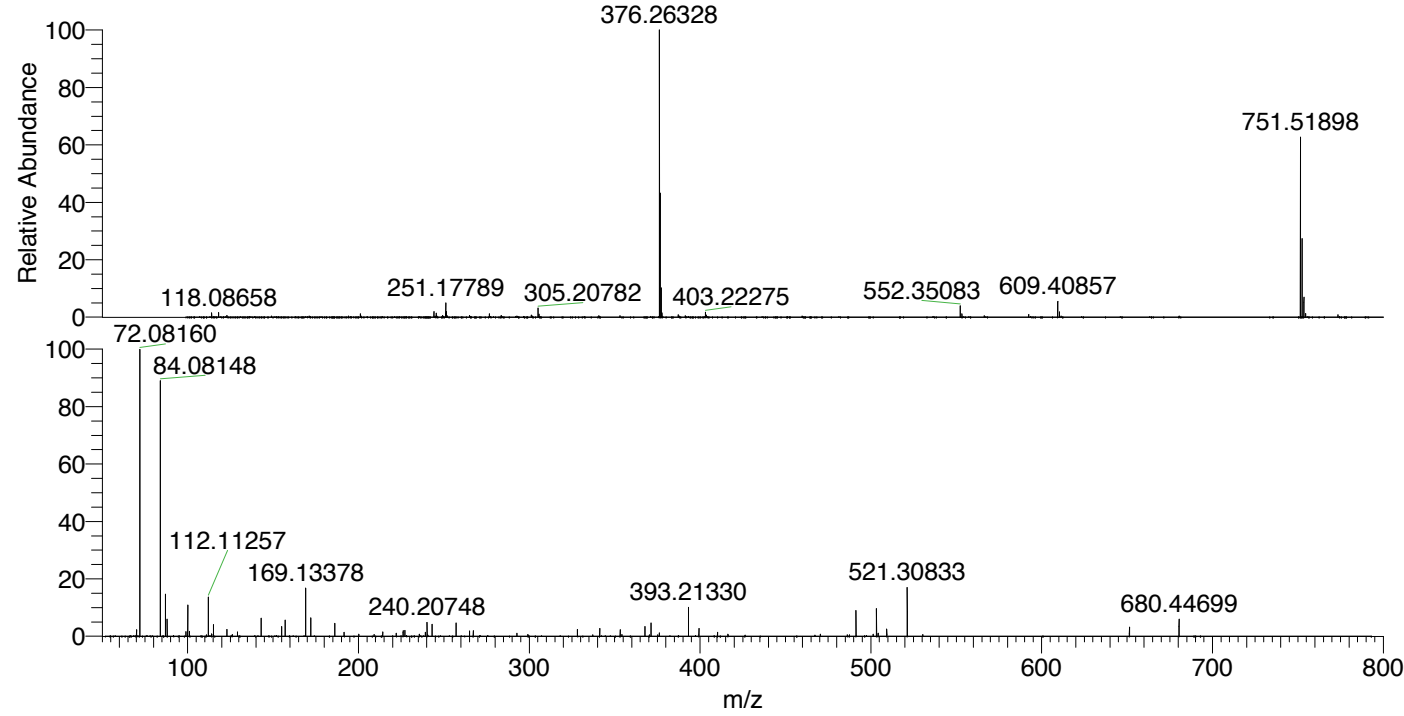
NL: 1.73E7
 Base Peak m/z= 751.51566-751.52318 F:
 FTMS + p ESI Full ms [100.00-1500.00]
 MS Nclavipes

NL: 2.68E7
 Base Peak m/z= 376.26174-376.26550 F:
 FTMS + p ESI Full ms [100.00-1500.00]
 MS Nclavipes

NL: 2.48E6
 Base Peak m/z= 50.00000-1500.00000 F:
 FTMS + p ESI d Full ms2
 376.26@hcd35.00 [52.33-785.00] MS
 Nclavipes

Nclavipes#1792-1826 RT: 4.49-4.57 AV: 7
 F: FTMS + p ESI d Full ms2 376.26@h ...
 m/z= 50.00000-1000.00000

m/z	Intensity	Relative
70.06596	36135.5	2.30
72.08160	1571412.3	100.00
84.08148	1408688.8	89.64
87.05597	232563.0	14.80
88.04002	95385.5	6.07
99.09224	25181.8	1.60
100.07622	170048.6	10.82
101.10802	27585.3	1.76
112.07632	80210.4	5.10
112.11257	212943.0	13.55
114.09196	13276.4	0.84
115.05080	63852.1	4.06
123.04452	38040.8	2.42
129.13896	23086.7	1.47
143.11813	98321.0	6.26
155.11825	53529.7	3.41
157.13381	88313.2	5.62
169.13378	261824.1	16.66
172.14470	100560.2	6.40
186.16054	71183.9	4.53
191.66274	22140.2	1.41
200.17639	11784.5	0.75
209.12921	9763.3	0.62
214.19201	23909.3	1.52
222.19689	16816.1	1.07
226.15543	19861.2	1.26
226.19209	30707.3	1.95
227.19975	32308.3	2.06
235.71243	11633.5	0.74
239.22339	21104.7	1.34
240.20748	75965.3	4.83
243.18230	65565.8	4.17
257.23455	73202.9	4.66
265.08228	29506.2	1.88
267.21836	29792.1	1.90
292.73424	16708.2	1.06
328.27097	37138.0	2.36
341.26595	43676.7	2.78
353.26654	35674.1	2.27
367.75037	54841.9	3.49
371.27723	71772.6	4.57
376.18588	17780.0	1.13
393.21330	161747.8	10.29
399.34481	43217.6	2.75
410.23899	21354.9	1.36
416.36985	11446.1	0.73
470.41941	10989.1	0.70
491.29868	140438.4	8.94
501.38608	12085.2	0.77
503.29800	156391.3	9.95
504.28087	16461.7	1.05
509.30691	41301.3	2.63
521.30833	264472.2	16.83
651.41759	51617.6	3.28
680.44699	94365.6	6.01



NL: 2.60E7
 Nclavipes#1801 RT: 4.51
 AV: 1 T: FTMS + p ESI
 Full ms [100.00-1500.00]

NL: 1.56E6
 Nclavipes#1788-1829 RT:
 4.49-4.57 AV: 7 F: FTMS
 + p ESI d Full ms2
 376.26@hcd35.00
 [52.33-785.00]

m/z	Intensity	Relative
118.08658	118.08658	0.01
251.17789	251.17789	0.01
305.20782	305.20782	0.01
376.26328	376.26328	100.00
403.22275	403.22275	0.01
552.35083	552.35083	0.01
609.40857	609.40857	0.01
72.08160	72.08160	0.01
84.08148	84.08148	0.01
112.11257	112.11257	0.01
169.13378	169.13378	0.01
240.20748	240.20748	0.01
393.21330	393.21330	0.01
521.30833	521.30833	0.01
680.44699	680.44699	0.01

Nclavipes#1792-1826 RT: 4.49-4.57 AV: 7

F: FTMS + p ESI d Full ms2 376.26@hcd35.00 [52.33-785.00]

m/z= 50.00000-1000.00000

m/z	Intensity	Relative
70.06596	36135.5	2.30
72.08160	1571412.3	100.00
84.08148	1408688.8	89.64
87.05597	232563.0	14.80
88.04002	95385.5	6.07
99.09224	25181.8	1.60
100.07622	170048.6	10.82
101.10802	27585.3	1.76
111.09223	8064.0	0.51
112.07632	80210.4	5.10
112.11257	212943.0	13.55
114.09196	13276.4	0.84
115.05080	63852.1	4.06
123.04452	38040.8	2.42
126.09192	9467.7	0.60
129.13896	23086.7	1.47
143.11813	98321.0	6.26
155.11825	53529.7	3.41
157.13381	88313.2	5.62
169.13378	261824.1	16.66
172.14470	100560.2	6.40
186.16054	71183.9	4.53
191.66274	22140.2	1.41
200.17639	11784.5	0.75
209.12921	9763.3	0.62
214.19201	23909.3	1.52
222.19689	16816.1	1.07
226.15543	19861.2	1.26
226.19209	30707.3	1.95
227.19975	32308.3	2.06
235.71243	11633.5	0.74
239.22339	21104.7	1.34
240.20748	75965.3	4.83
243.18230	65565.8	4.17
257.23455	73202.9	4.66
265.08228	29506.2	1.88
267.21836	29792.1	1.90
292.73424	16708.2	1.06
299.24523	9630.2	0.61

Nclavipes#1792-1826 RT: 4.49-4.57 AV: 7

F: FTMS + p ESI d Full ms2 376.26@hcd35.00 [52.33-785.00]

m/z= 50.00000-1000.00000

m/z	Intensity	Relative
328.27097	37138.0	2.36
341.26595	43676.7	2.78
353.26654	35674.1	2.27
354.24878	9207.1	0.59
367.75037	54841.9	3.49
371.27723	71772.6	4.57
376.18588	17780.0	1.13
393.21330	161747.8	10.29
399.34481	43217.6	2.75
410.23899	21354.9	1.36
416.36985	11446.1	0.73
470.41941	10989.1	0.70
487.44350	8066.0	0.51
491.29868	140438.4	8.94
501.38608	12085.2	0.77
503.29800	156391.3	9.95
504.28087	16461.7	1.05
509.30691	41301.3	2.63
521.30833	264472.2	16.83
530.41344	9378.4	0.60
651.41759	51617.6	3.28
680.44699	94365.6	6.01