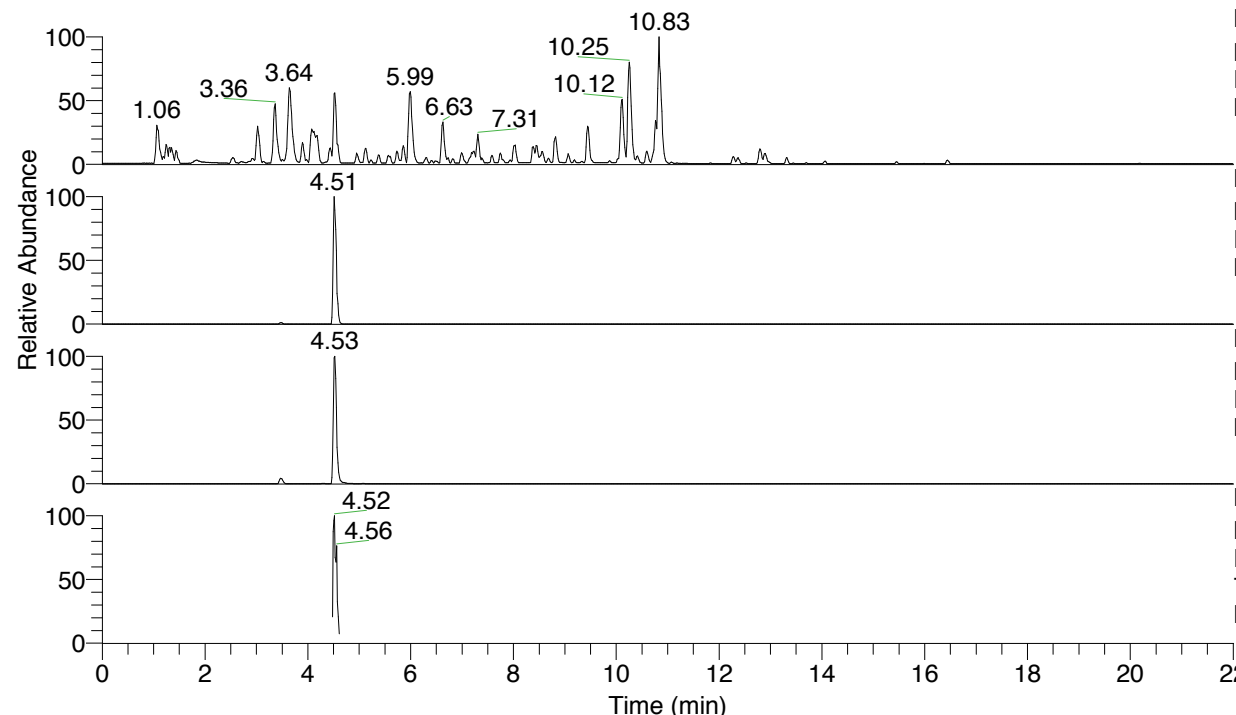


RT: 0.00 - 22.01



NL: 4.79E7  
 Base Peak m/z= 100.00000-1500.00000 F:  
 FTMS + p ESI Full ms [100.00-1500.00]  
 MS Nclavipes

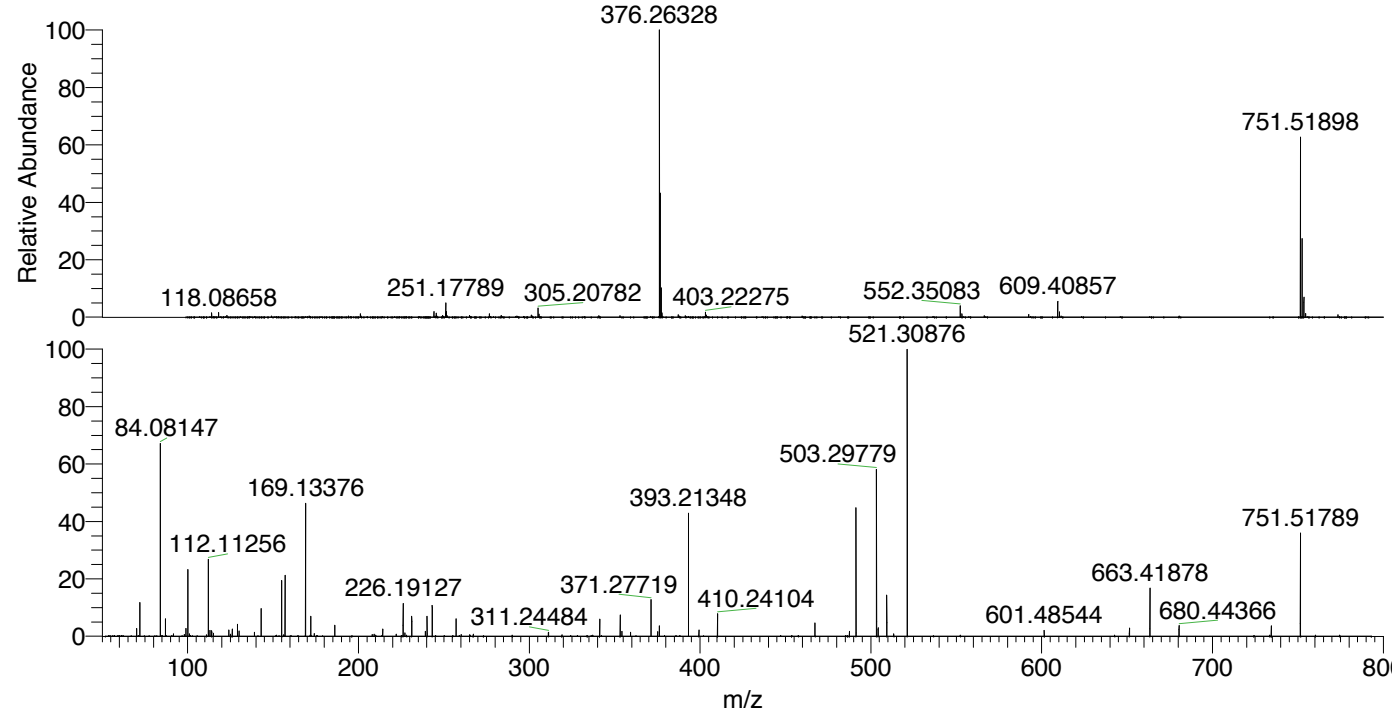
NL: 1.73E7  
 Base Peak m/z= 751.51566-751.52318 F:  
 FTMS + p ESI Full ms [100.00-1500.00]  
 MS Nclavipes

NL: 2.68E7  
 Base Peak m/z= 376.26174-376.26550 F:  
 FTMS + p ESI Full ms [100.00-1500.00]  
 MS Nclavipes

NL: 6.28E5  
 Base Peak m/z= 50.00000-1500.00000 F:  
 FTMS + p ESI d Full ms2  
 751.52@hcd35.00 [52.33-785.00] MS  
 Nclavipes

Nclavipes#1788-1821 RT: 4.48-4.56 AV:  
 F: FTMS + p ESI d Full ms2 751.52 ...  
 m/z= 50.00000-1000.00000

m/z	Intensity	Relative
70.06593	10864.3	2.46
72.08160	54024.0	12.24
84.08146	300971.2	68.19
87.05607	26060.4	5.90
99.09223	12435.4	2.82
100.07626	102876.3	23.31
112.07624	64734.9	14.67
112.11257	119047.2	26.97
113.10793	8532.2	1.93
114.09205	8158.3	1.85
124.07596	10067.6	2.28
126.09199	11602.5	2.63
129.13928	19218.6	4.35
130.12329	8555.9	1.94
139.12334	6445.6	1.46
143.11817	42032.6	9.52
155.11800	90313.9	20.46
157.13385	95844.9	21.71
169.13376	202575.7	45.90
172.14505	30667.1	6.95
186.16079	18402.4	4.17
214.19180	11722.5	2.66
226.15581	17695.1	4.01
226.19123	50776.4	11.50
227.22399	5549.2	1.26
231.21866	29015.3	6.57
239.22383	7924.4	1.80
240.20812	31317.7	7.10
243.18186	47737.3	10.82
243.21848	45596.7	10.33
257.23334	28089.3	6.36
311.24484	6311.5	1.43
341.26590	25281.8	5.73
353.26657	31815.5	7.21
354.25059	7681.9	1.74
359.27775	6377.1	1.44
371.27734	55683.7	12.62
375.20297	7405.5	1.68
376.18671	16826.4	3.81
393.21343	192309.6	43.57
399.34414	9122.1	2.07
410.24098	35269.7	7.99
467.29826	19583.4	4.44
487.44624	8087.9	1.83
491.29836	200242.8	45.37
503.29779	262137.5	59.39
504.28119	11659.0	2.64
509.30828	64660.7	14.65
521.30873	441377.0	100.00
601.48542	9293.9	2.11
651.41946	13152.0	2.98
663.41878	73178.0	16.58
680.44365	17316.6	3.92
734.48981	16584.4	3.76
751.51768	160174.3	36.29



NL: 2.60E7  
 Nclavipes#1801 RT: 4.51  
 AV: 1 T: FTMS + p ESI  
 Full ms [100.00-1500.00]

NL: 4.52E5  
 Nclavipes#1789-1827 RT:  
 4.49-4.58 AV: 7 F: FTMS  
 + p ESI d Full ms2  
 751.52@hcd35.00  
 [52.33-785.00]

Nclavipes#1788-1821 RT: 4.48-4.56 AV: 7

F: FTMS + p ESI d Full ms2 751.52@hcd35.00 [52.33-785.00]

m/z= 50.00000-1000.00000

m/z	Intensity	Relative
70.06593	10864.3	2.46
72.08160	54024.0	12.24
84.08146	300971.2	68.19
87.05607	26060.4	5.90
91.75928	3984.4	0.90
98.09714	2792.4	0.63
99.09223	12435.4	2.82
100.07626	102876.3	23.31
101.10826	3893.4	0.88
112.07624	64734.9	14.67
112.11257	119047.2	26.97
113.10793	8532.2	1.93
114.09205	8158.3	1.85
115.05070	4930.4	1.12
115.12330	3960.2	0.90
124.07596	10067.6	2.28
125.10796	3279.3	0.74
126.09199	11602.5	2.63
129.13928	19218.6	4.35
130.12329	8555.9	1.94
139.12334	6445.6	1.46
143.11817	42032.6	9.52
155.11800	90313.9	20.46
156.15003	2254.1	0.51
157.13385	95844.9	21.71
169.13376	202575.7	45.90
172.14505	30667.1	6.95
174.16060	4581.0	1.04
186.16079	18402.4	4.17
208.14540	2949.3	0.67
209.12853	3189.2	0.72
214.19180	11722.5	2.66
222.19795	3110.4	0.70
226.15581	17695.1	4.01
226.19123	50776.4	11.50
227.22399	5549.2	1.26
231.21866	29015.3	6.57
239.22383	7924.4	1.80
240.20812	31317.7	7.10

Nclavipes#1788-1821 RT: 4.48-4.56 AV: 7

F: FTMS + p ESI d Full ms2 751.52@hcd35.00 [52.33-785.00]

m/z= 50.00000-1000.00000

m/z	Intensity	Relative
243.18186	47737.3	10.82
243.21848	45596.7	10.33
257.23334	28089.3	6.36
260.20847	2957.9	0.67
265.08147	2348.0	0.53
267.21946	3220.5	0.73
311.24484	6311.5	1.43
341.26590	25281.8	5.73
353.26657	31815.5	7.21
354.25059	7681.9	1.74
359.27775	6377.1	1.44
371.27734	55683.7	12.62
375.20297	7405.5	1.68
376.18671	16826.4	3.81
393.21343	192309.6	43.57
399.34414	9122.1	2.07
410.24098	35269.7	7.99
467.29826	19583.4	4.44
487.44624	8087.9	1.83
491.29836	200242.8	45.37
503.29779	262137.5	59.39
503.36465	2680.6	0.61
504.28119	11659.0	2.64
509.30828	64660.7	14.65
513.38617	3632.8	0.82
521.30873	441377.0	100.00
601.48542	9293.9	2.11
651.41946	13152.0	2.98
663.41887	73178.0	16.58
680.44365	17316.6	3.92
734.48981	16584.4	3.76
751.51768	160174.3	36.29