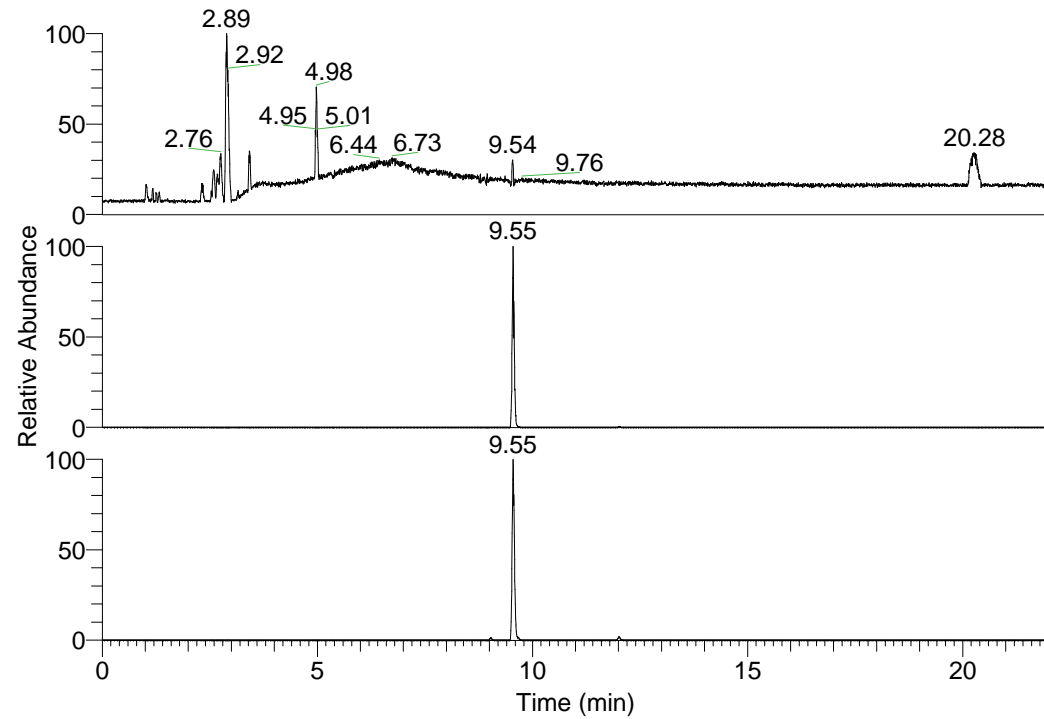


RT: 0.00 - 22.01



NL: 1.01E8  
 Base Peak m/z=  
 100.00000-1500.00000 F:  
 FTMS + p ESI Full ms  
 [100.00-1500.00] MS  
 Nclavipes\_HDX

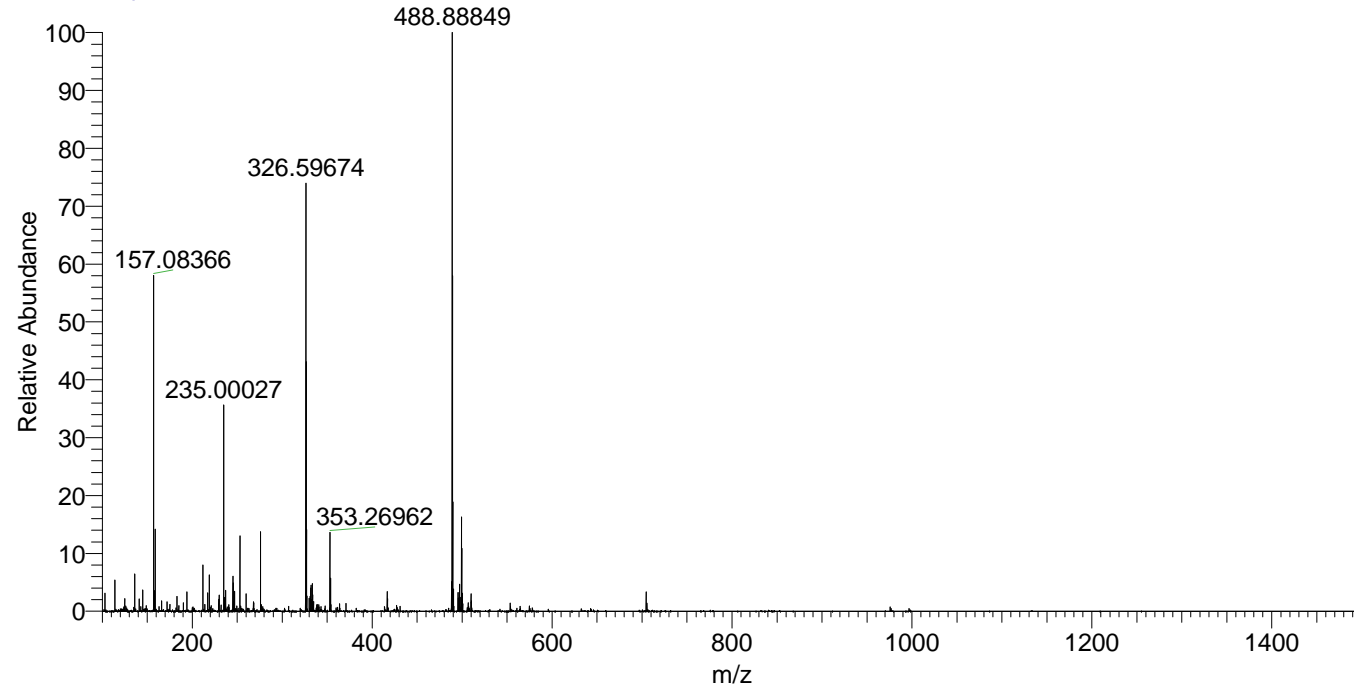
NL: 9.69E5  
 Base Peak m/z=  
 704.52276-704.52980 F:  
 FTMS + p ESI Full ms  
 [100.00-1500.00] MS  
 Nclavipes\_HDX

NL: 3.80E6  
 Base Peak m/z=  
 353.26842-353.27196 F:  
 FTMS + p ESI Full ms  
 [100.00-1500.00] MS  
 Nclavipes\_HDX

Nclavipes\_HDX#1534 RT: 9.55  
 T: FTMS + p ESI Full ms [100.00-1500.00]  
 m/z= 704.00000-705.00000

m/z	Intensity	Relative	Delta (ppm)	Composition
704.52576	969114.4	100.00	0.03	C <sub>32</sub> H <sub>38</sub> <sup>2</sup> H <sub>16</sub> O <sub>6</sub> N <sub>11</sub>
			-2.16	C <sub>32</sub> H <sub>40</sub> <sup>2</sup> H <sub>15</sub> O <sub>6</sub> N <sub>11</sub>
			2.23	C <sub>32</sub> H <sub>36</sub> <sup>2</sup> H <sub>17</sub> O <sub>6</sub> N <sub>11</sub>
			-4.36	C <sub>32</sub> H <sub>42</sub> <sup>2</sup> H <sub>14</sub> O <sub>6</sub> N <sub>11</sub>
			4.43	C <sub>32</sub> H <sub>34</sub> <sup>2</sup> H <sub>18</sub> O <sub>6</sub> N <sub>11</sub>

Nclavipes\_HDX #1534 RT: 9.55 AV: 1 NL: 2.77E7  
 T: FTMS + p ESI Full ms [100.00-1500.00]



Nclavipes\_HDX #1534 RT: 9.55 AV: 1 NL: 9.27E5  
 T: FTMS + p ESI Full ms [100.00-1500.00]

