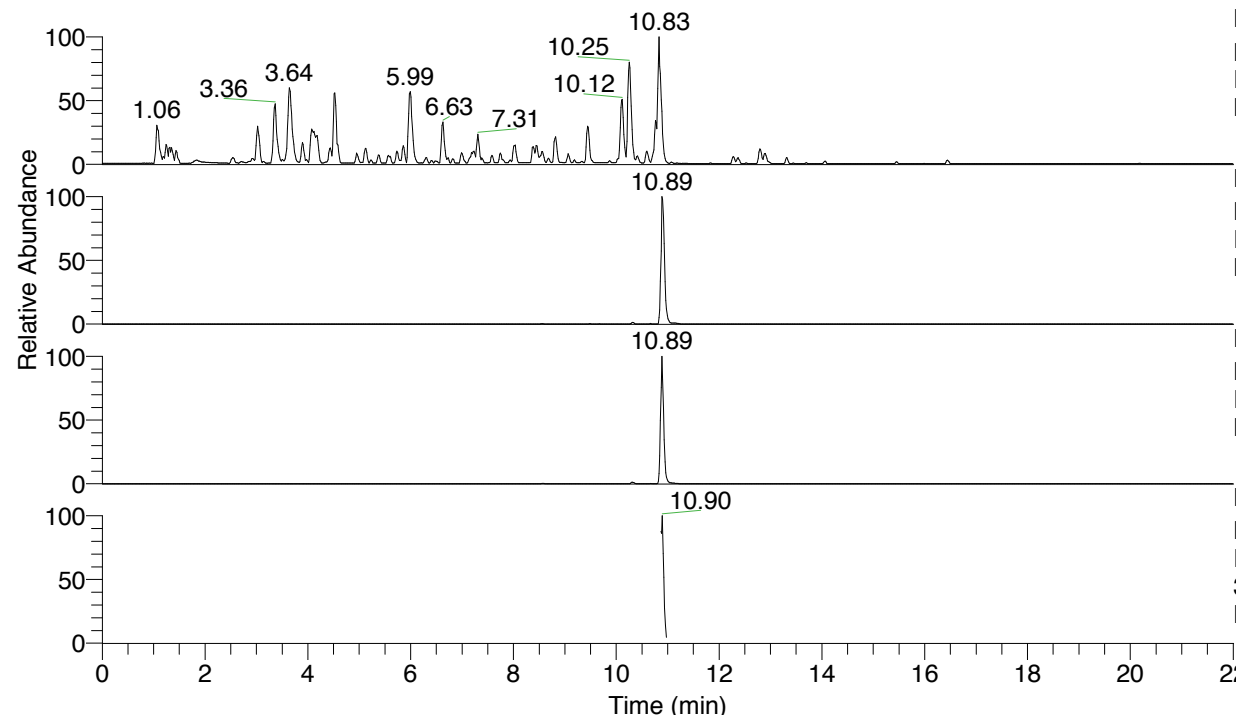


RT: 0.00 - 22.01



NL: 4.79E7
 Base Peak m/z= 100.00000-1500.00000 F:
 FTMS + p ESI Full ms [100.00-1500.00]
 MS Nclavipes

NL: 4.54E6
 Base Peak m/z= 688.42241-688.42929 F:
 FTMS + p ESI Full ms [100.00-1500.00]
 MS Nclavipes

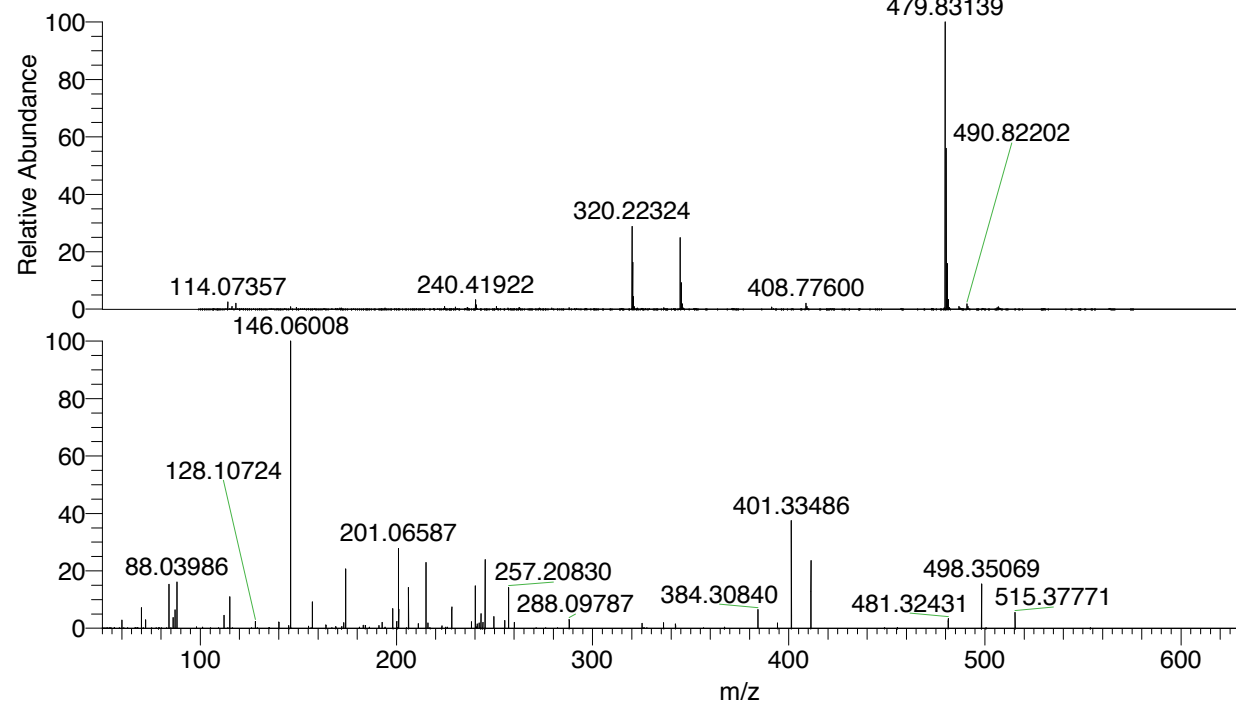
NL: 5.10E6
 Base Peak m/z= 344.71512-344.71856 F:
 FTMS + p ESI Full ms [100.00-1500.00]
 MS Nclavipes

NL: 5.97E5
 Base Peak m/z= 50.00000-1500.00000 F:
 FTMS + p ESI d Full ms2
 344.72@hcd35.00 [50.00-720.00] MS
 Nclavipes

Nclavipes#4331-4360 RT: 10.87-10.94

F: FTMS + p ESI d Full ms2 344.72 ...
 m/z= 50.00000-1000.00000

m/z	Intensity	Relative
60.05640	10534.8	2.64
70.06586	27344.8	6.86
72.08145	11786.6	2.96
84.08139	61055.9	15.31
86.09702	14556.4	3.65
87.05586	25624.7	6.43
88.03986	64028.7	16.06
112.08731	17632.3	4.42
115.05053	44232.7	11.09
128.10726	9568.5	2.40
140.08192	8068.5	2.02
146.06008	398739.9	100.00
157.10827	34725.2	8.71
157.13407	6760.1	1.70
164.07097	4394.9	1.10
173.07128	7441.1	1.87
174.05497	80245.2	20.12
183.11329	3814.4	0.96
184.14410	3689.0	0.93
192.65753	8505.6	2.13
198.05533	18510.3	4.64
198.16007	26643.5	6.68
200.07080	7875.2	1.98
200.13965	8621.0	2.16
201.06590	109404.4	27.44
201.17066	25465.2	6.39
206.16328	54398.8	13.64
211.15558	6761.8	1.70
215.08168	92696.5	23.25
216.06589	7425.8	1.86
228.18204	24273.3	6.09
228.20730	29513.0	7.40
238.19119	8282.6	2.08
240.18165	57832.7	14.50
241.16593	6115.8	1.53
242.14954	6709.4	1.68
243.07668	19399.8	4.87
244.05976	7763.4	1.95
245.20866	91256.9	22.89
245.23358	23014.0	5.77
249.67953	14812.0	3.71
255.21823	10065.1	2.52
257.20826	53840.6	13.50
260.10317	7668.4	1.92
288.09783	12084.5	3.03
325.22305	6864.1	1.72
336.20404	7232.3	1.81
342.24984	5439.9	1.36
384.30842	25459.4	6.38
394.29373	6720.4	1.69
401.33483	149550.1	37.51
411.31898	92021.5	23.08
481.32428	12343.2	3.10
498.35064	59467.0	14.91
515.37773	20945.2	5.25



NL: 1.99E7
 Nclavipes#4339 RT: 10.89
 AV: 1 T: FTMS + p ESI
 Full ms [100.00-1500.00]

NL: 4.36E5
 Nclavipes#4327-4356 RT:
 10.87-10.92 AV: 5 F:
 FTMS + p ESI d Full ms2
 344.72@hcd35.00
 [50.00-720.00]

Nclavipes#4331-4360 RT: 10.87-10.94 AV: 6

F: FTMS + p ESI d Full ms2 344.72@hcd35.00 [50.00-720.00]

m/z= 50.00000-1000.00000

m/z	Intensity	Relative
60.05640	10534.8	2.64
70.06586	27344.8	6.86
72.08145	11786.6	2.96
84.08139	61055.9	15.31
86.09702	14556.4	3.65
87.05586	25624.7	6.43
88.03986	64028.7	16.06
112.08731	17632.3	4.42
115.05053	44232.7	11.09
115.08680	3047.6	0.76
128.10726	9568.5	2.40
140.08192	8068.5	2.02
145.13342	3346.7	0.84
146.06008	398739.9	100.00
155.11796	2508.6	0.63
157.10827	34725.2	8.71
157.13407	6760.1	1.70
164.07097	4394.9	1.10
169.10869	2365.0	0.59
172.07607	2156.3	0.54
173.07128	7441.1	1.87
174.05497	80245.2	20.12
183.11329	3814.4	0.96
184.14410	3689.0	0.93
191.08080	3670.3	0.92
192.65753	8505.6	2.13
198.05533	18510.3	4.64
198.16007	26643.5	6.68
200.07080	7875.2	1.98
200.13965	8621.0	2.16
201.06590	109404.4	27.44
201.08200	3235.2	0.81
201.17066	25465.2	6.39
206.16328	54398.8	13.64
211.15558	6761.8	1.70
215.08168	92696.5	23.25
216.06589	7425.8	1.86
223.15569	3160.3	0.79
228.18204	24273.3	6.09

Nclavipes#4331-4360 RT: 10.87-10.94 AV: 6

F: FTMS + p ESI d Full ms2 344.72@hcd35.00 [50.00-720.00]

m/z= 50.00000-1000.00000

m/z	Intensity	Relative
228.20730	29513.0	7.40
238.19119	8282.6	2.08
240.18165	57832.7	14.50
241.16593	6115.8	1.53
242.14954	6709.4	1.68
243.07668	19399.8	4.87
244.05976	7763.4	1.95
245.20866	91256.9	22.89
245.23358	23014.0	5.77
249.67953	14812.0	3.71
255.21823	10065.1	2.52
257.20826	53840.6	13.50
260.10317	7668.4	1.92
288.09783	12084.5	3.03
325.22305	6864.1	1.72
336.20404	7232.3	1.81
342.24984	5439.9	1.36
342.28734	3096.6	0.78
384.30842	25459.4	6.38
394.29373	6720.4	1.69
401.33483	149550.1	37.51
411.31898	92021.5	23.08
481.32428	12343.2	3.10
498.35064	59467.0	14.91
515.37773	20945.2	5.25