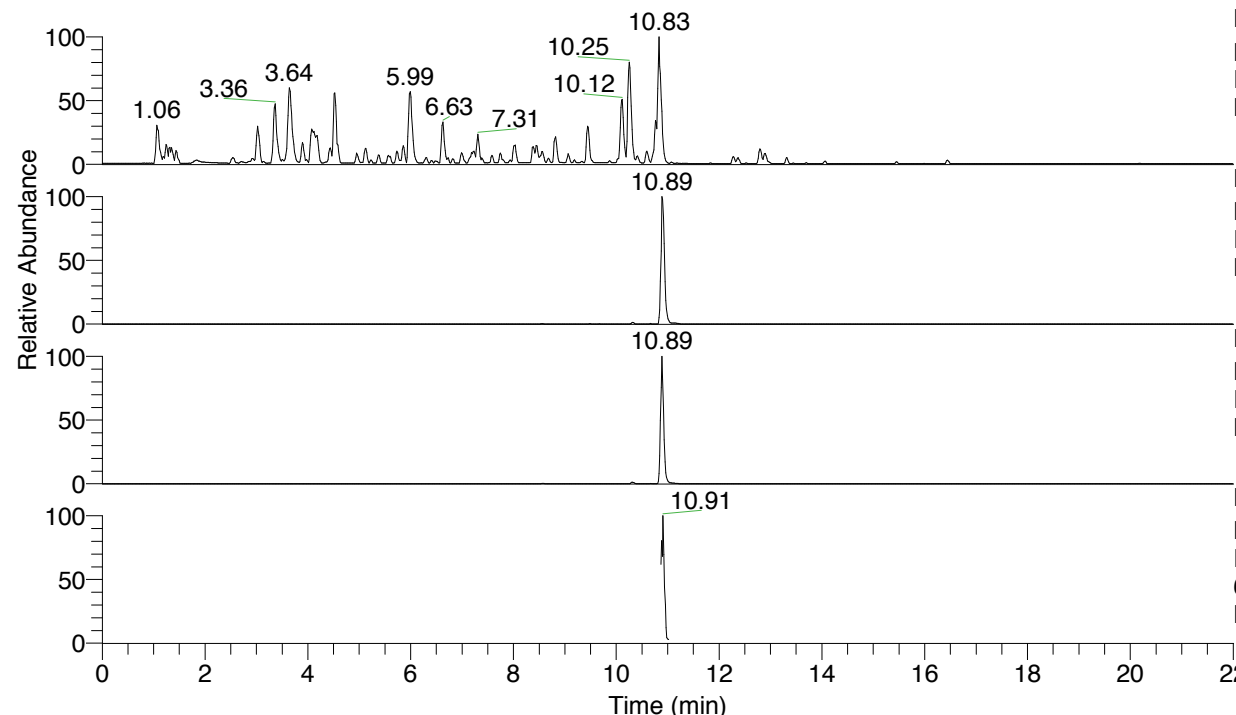


RT: 0.00 - 22.01



NL: 4.79E7
 Base Peak m/z= 100.00000-1500.00000 F:
 FTMS + p ESI Full ms [100.00-1500.00]
 MS Nclavipes

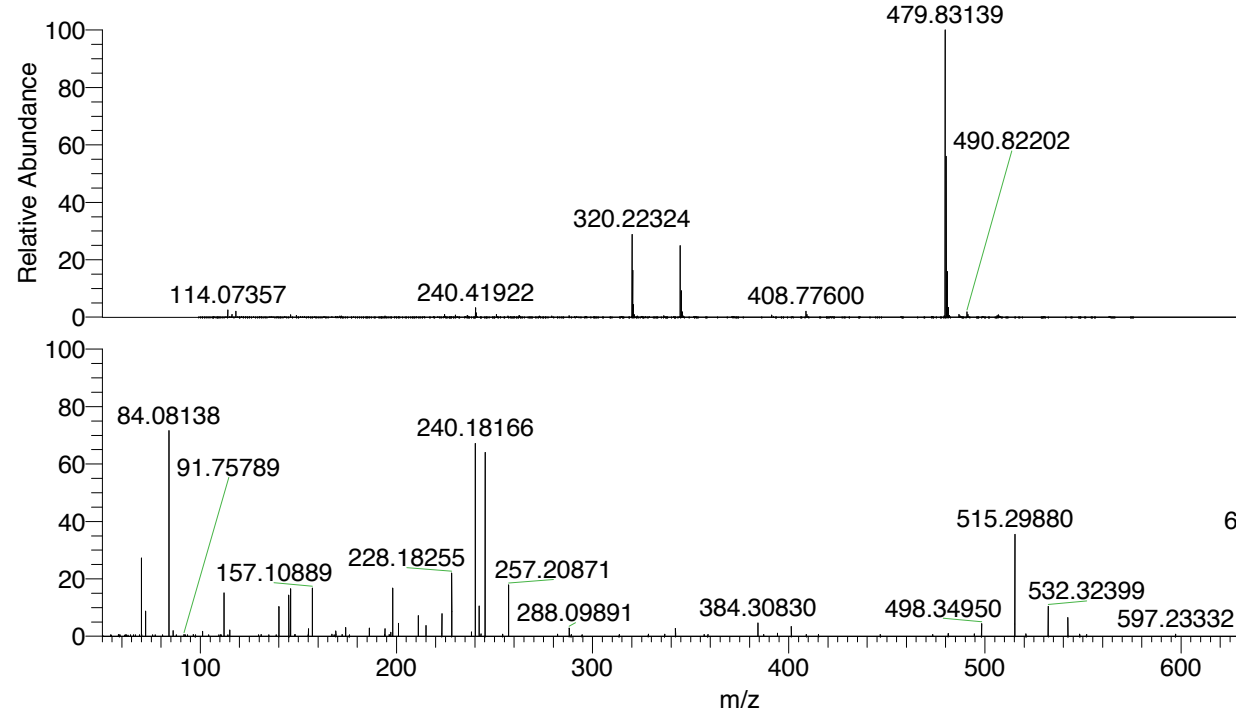
NL: 4.54E6
 Base Peak m/z= 688.42241-688.42929 F:
 FTMS + p ESI Full ms [100.00-1500.00]
 MS Nclavipes

NL: 5.10E6
 Base Peak m/z= 344.71512-344.71856 F:
 FTMS + p ESI Full ms [100.00-1500.00]
 MS Nclavipes

NL: 2.47E5
 Base Peak m/z= 50.00000-1500.00000 F:
 FTMS + p ESI d Full ms2
 688.42@hcd35.00 [50.00-720.00] MS
 Nclavipes

Nclavipes#4332-4359 RT: 10.87-10.94
 F: FTMS + p ESI d Full ms2 688.42 ...
 m/z= 50.00000-1000.00000

m/z	Intensity	Relative
70.06593	45236.8	27.07
72.08160	14225.7	8.51
84.08138	117972.1	70.60
86.09728	3110.2	1.86
101.10809	2777.9	1.66
112.08753	24846.7	14.87
115.08725	3614.2	2.16
140.08210	17355.0	10.39
145.13395	23258.4	13.92
146.06042	26899.2	16.10
155.11863	4189.6	2.51
157.10889	28216.7	16.89
157.13375	2405.6	1.44
167.11768	1150.4	0.69
169.10913	2917.9	1.75
174.05491	3834.5	2.29
174.16080	5122.3	3.07
186.16003	4656.2	2.79
194.12922	4356.0	2.61
197.17586	2260.4	1.35
198.16025	27651.2	16.55
201.06652	7333.2	4.39
211.15630	11796.1	7.06
215.08191	6172.9	3.69
223.15529	12771.2	7.64
228.18255	37103.0	22.20
228.20699	17555.9	10.51
238.19071	2462.6	1.47
240.18166	112718.0	67.45
242.15041	17686.9	10.58
243.07765	1325.9	0.79
245.20857	104156.6	62.33
245.23141	4565.0	2.73
254.14915	1261.4	0.75
257.20871	29487.9	17.65
282.18914	1217.4	0.73
288.09891	4719.0	2.82
328.41781	1123.9	0.67
336.76070	1274.7	0.76
342.25098	4627.7	2.77
342.28842	1422.4	0.85
384.30830	7473.5	4.47
394.29063	1708.2	1.02
401.33336	5599.5	3.35
481.32692	1543.1	0.92
494.60677	1402.4	0.84
498.34950	7116.1	4.26
515.29880	58416.2	34.96
520.94968	1322.6	0.79
532.32399	17709.6	10.60
542.30877	10850.5	6.49
548.36890	1101.5	0.66
597.23332	1272.1	0.76
671.39838	56897.9	34.05
688.42436	167105.9	100.00



NL: 1.99E7
 Nclavipes#4339 RT: 10.89
 AV: 1 T: FTMS + p ESI
 Full ms [100.00-1500.00]

NL: 1.63E5
 Nclavipes#4332-4362 RT:
 10.87-10.94 AV: 6 F:
 FTMS + p ESI d Full ms2
 688.42@hcd35.00
 [50.00-720.00]

Nclavipes#4332-4359 RT: 10.87-10.94 AV: 6

F: FTMS + p ESI d Full ms2 688.42@hcd35.00 [50.00-720.00]

m/z= 50.00000-1000.00000

m/z	Intensity	Relative
58.64812	887.5	0.53
59.03222	889.3	0.53
64.37599	840.4	0.50
65.97590	838.0	0.50
68.98447	902.7	0.54
70.06593	45236.8	27.07
72.08160	14225.7	8.51
77.08427	868.9	0.52
84.08138	117972.1	70.60
86.09728	3110.2	1.86
87.77508	837.5	0.50
91.75789	1084.3	0.65
92.39407	850.1	0.51
93.52668	862.3	0.52
96.48367	979.0	0.59
101.10809	2777.9	1.66
104.27594	871.7	0.52
109.47363	867.6	0.52
112.08753	24846.7	14.87
113.98311	915.1	0.55
115.05118	1025.7	0.61
115.08725	3614.2	2.16
129.69437	888.1	0.53
130.99922	1015.1	0.61
138.64808	896.8	0.54
140.08210	17355.0	10.39
145.13395	23258.4	13.92
146.06042	26899.2	16.10
148.11737	870.0	0.52
148.28823	988.1	0.59
154.97305	853.0	0.51
155.11863	4189.6	2.51
157.10889	28216.7	16.89
157.13375	2405.6	1.44
167.11768	1150.4	0.69
168.20001	911.3	0.55
169.10913	2917.9	1.75
169.13339	1014.8	0.61
172.24655	939.0	0.56

Nclavipes#4332-4359 RT: 10.87-10.94 AV: 6

F: FTMS + p ESI d Full ms2 688.42@hcd35.00 [50.00-720.00]

m/z= 50.00000-1000.00000

m/z	Intensity	Relative
174.05491	3834.5	2.29
174.16080	5122.3	3.07
175.99817	894.7	0.54
186.16003	4656.2	2.79
193.99213	954.6	0.57
194.12922	4356.0	2.61
196.24726	944.9	0.57
197.10384	1077.6	0.64
197.17586	2260.4	1.35
198.16025	27651.2	16.55
201.06652	7333.2	4.39
211.15630	11796.1	7.06
215.08191	6172.9	3.69
223.15529	12771.2	7.64
228.18255	37103.0	22.20
228.20699	17555.9	10.51
238.19071	2462.6	1.47
240.18166	112718.0	67.45
242.15041	17686.9	10.58
243.07765	1325.9	0.79
245.20857	104156.6	62.33
245.23141	4565.0	2.73
254.14915	1261.4	0.75
257.20871	29487.9	17.65
282.18914	1217.4	0.73
288.09891	4719.0	2.82
289.09465	984.8	0.59
294.63253	868.0	0.52
313.57326	1003.0	0.60
328.41781	1123.9	0.67
336.76070	1274.7	0.76
342.25098	4627.7	2.77
342.28842	1422.4	0.85
356.86501	1022.7	0.61
358.77970	1053.7	0.63
384.30830	7473.5	4.47
387.21605	955.5	0.57
394.29063	1708.2	1.02
401.33336	5599.5	3.35

Nclavipes#4332-4359 RT: 10.87-10.94 AV: 6

F: FTMS + p ESI d Full ms2 688.42@hcd35.00 [50.00-720.00]

m/z= 50.00000-1000.00000

m/z	Intensity	Relative
408.98954	1056.6	0.63
415.19604	1086.7	0.65
446.69761	1040.6	0.62
473.38996	1066.7	0.64
481.32692	1543.1	0.92
494.60677	1402.4	0.84
498.34950	7116.1	4.26
515.29880	58416.2	34.96
520.94968	1322.6	0.79
532.32399	17709.6	10.60
542.30877	10850.5	6.49
548.36890	1101.5	0.66
551.84245	1031.5	0.62
597.23332	1272.1	0.76
671.39838	56897.9	34.05
688.42436	167105.9	100.00