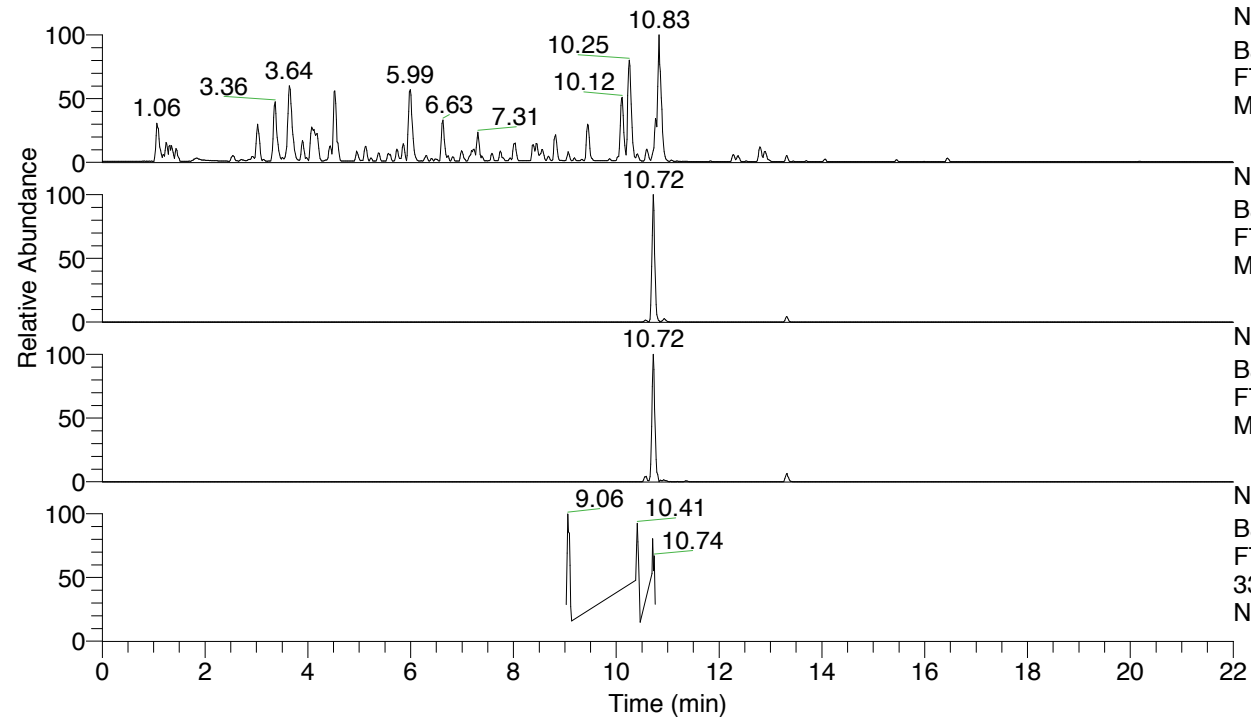


RT: 0.00 - 22.01



NL: 4.79E7
 Base Peak m/z= 100.00000-1500.00000 F:
 FTMS + p ESI Full ms [100.00-1500.00]
 MS Nclavipes

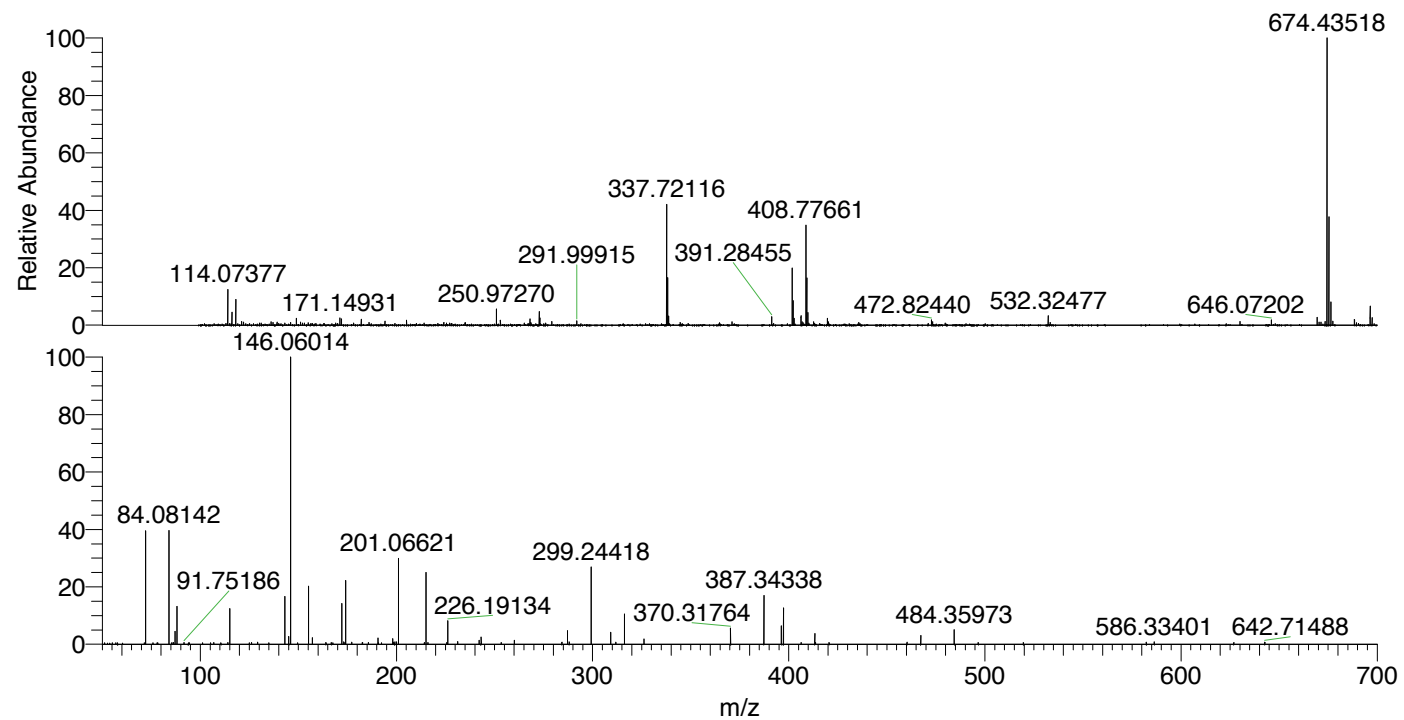
NL: 4.53E6
 Base Peak m/z= 674.43199-674.43873 F:
 FTMS + p ESI Full ms [100.00-1500.00]
 MS Nclavipes

NL: 1.90E6
 Base Peak m/z= 337.71990-337.72328 F:
 FTMS + p ESI Full ms [100.00-1500.00]
 MS Nclavipes

NL: 2.56E5
 Base Peak m/z= 50.00000-1500.00000 F:
 FTMS + p ESI d Full ms2
 337.71@hcd35.00 [50.00-705.00] MS
 Nclavipes

Nclavipes#4259-4275 RT: 10.70-10.74
 F: FTMS + p ESI d Full ms2 337.71 ...
 m/z= 50.00000-1000.00000

m/z	Intensity	Relative
72.08156	60837.4	39.69
84.08142	61177.7	39.92
86.09715	986.0	0.64
87.05582	6959.2	4.54
88.03987	20901.2	13.64
115.05071	18942.0	12.36
126.09217	1021.2	0.67
129.16277	1035.4	0.68
143.11812	25393.7	16.57
145.13370	4201.5	2.74
146.06014	153263.4	100.00
155.11811	31387.7	20.48
157.13419	3520.5	2.30
172.14444	21760.5	14.20
173.07124	1249.3	0.82
174.05471	33908.4	22.12
177.14903	1055.7	0.69
185.66334	1030.3	0.67
190.65516	3376.4	2.20
198.05471	2930.5	1.91
198.63406	1133.8	0.74
199.16890	1277.7	0.83
200.07129	1343.6	0.88
201.06621	45661.8	29.79
215.08162	38603.7	25.19
216.06650	967.6	0.63
226.19134	12927.7	8.43
231.21954	1366.2	0.89
242.14872	2117.2	1.38
243.07628	3806.0	2.48
243.21900	1315.4	0.86
260.10267	2253.7	1.47
284.34748	1028.7	0.67
287.24401	7333.9	4.79
288.09690	1212.6	0.79
299.24418	42233.7	27.56
309.22810	6424.0	4.19
311.81251	1075.1	0.70
316.27056	16320.5	10.65
326.25422	2811.7	1.83
370.31764	8668.0	5.66
387.34338	25966.0	16.94
396.26059	9838.7	6.42
397.32916	19466.6	12.70
406.31734	1010.6	0.66
413.28677	5701.8	3.72
460.29162	1055.3	0.69
467.33075	4631.3	3.02
484.35973	7672.2	5.01
496.60375	1013.1	0.66
519.64016	965.6	0.63
582.29283	1031.8	0.67
586.33401	1208.9	0.79
642.71488	1054.5	0.69
704.14072	993.6	0.65



NL: 4.39E6
 Nclavipes#4267 RT: 10.72
 AV: 1 T: FTMS + p ESI
 Full lock ms
 [100.00-1500.00]

NL: 1.52E5
 Nclavipes#4259-4276 RT:
 10.70-10.74 AV: 4 F:
 FTMS + p ESI d Full ms2
 337.71@hcd35.00
 [50.00-705.00]

Nclavipes#4259-4275 RT: 10.70-10.74 AV: 4

F: FTMS + p ESI d Full ms2 337.71@hcd35.00 [50.00-705.00]

m/z= 50.00000-1000.00000

m/z	Intensity	Relative
56.86281	849.7	0.55
72.08156	60837.4	39.69
75.82684	768.4	0.50
78.00818	767.0	0.50
78.32953	843.9	0.55
84.08142	61177.7	39.92
86.09715	986.0	0.64
86.24454	770.5	0.50
86.25019	852.0	0.56
87.05582	6959.2	4.54
88.03987	20901.2	13.64
91.75186	906.2	0.59
93.90069	784.6	0.51
94.52369	813.0	0.53
101.23590	815.9	0.53
106.90332	888.6	0.58
114.09165	918.1	0.60
115.05071	18942.0	12.36
124.96841	838.1	0.55
126.09217	1021.2	0.67
129.16277	1035.4	0.68
134.87609	827.0	0.54
143.11812	25393.7	16.57
145.13370	4201.5	2.74
146.06014	153263.4	100.00
149.68781	844.3	0.55
155.11811	31387.7	20.48
157.13419	3520.5	2.30
164.06983	916.2	0.60
166.83834	878.8	0.57
167.54999	864.9	0.56
172.14444	21760.5	14.20
173.07124	1249.3	0.82
173.71944	944.3	0.62
174.05471	33908.4	22.12
177.14903	1055.7	0.69
182.56861	920.8	0.60
182.68460	957.2	0.62
185.66334	1030.3	0.67

Nclavipes#4259-4275 RT: 10.70-10.74 AV: 4

F: FTMS + p ESI d Full ms2 337.71@hcd35.00 [50.00-705.00]

m/z= 50.00000-1000.00000

m/z	Intensity	Relative
190.65516	3376.4	2.20
190.69289	826.5	0.54
192.33237	837.8	0.55
198.05471	2930.5	1.91
198.63406	1133.8	0.74
199.16890	1277.7	0.83
200.07129	1343.6	0.88
201.06621	45661.8	29.79
214.19146	903.0	0.59
215.08162	38603.7	25.19
216.06650	967.6	0.63
225.65658	927.0	0.60
226.19134	12927.7	8.43
231.21954	1366.2	0.89
242.14872	2117.2	1.38
243.07628	3806.0	2.48
243.21900	1315.4	0.86
253.42263	937.6	0.61
260.10267	2253.7	1.47
284.34748	1028.7	0.67
287.24401	7333.9	4.79
288.09690	1212.6	0.79
299.24418	42233.7	27.56
309.22810	6424.0	4.19
311.81251	1075.1	0.70
316.27056	16320.5	10.65
326.25422	2811.7	1.83
370.31764	8668.0	5.66
387.34338	25966.0	16.94
396.26059	9838.7	6.42
397.32916	19466.6	12.70
406.31734	1010.6	0.66
413.28677	5701.8	3.72
413.69740	912.1	0.60
420.59319	888.4	0.58
460.29162	1055.3	0.69
467.33075	4631.3	3.02
484.35973	7672.2	5.01
496.60375	1013.1	0.66

Nclavipes#4259-4275 RT: 10.70-10.74 AV: 4

F: FTMS + p ESI d Full ms2 337.71@hcd35.00 [50.00-705.00]

m/z= 50.00000-1000.00000

m/z	Intensity	Relative
519.64016	965.6	0.63
582.29283	1031.8	0.67
586.33401	1208.9	0.79
626.91907	855.3	0.56
642.71488	1054.5	0.69
704.14072	993.6	0.65