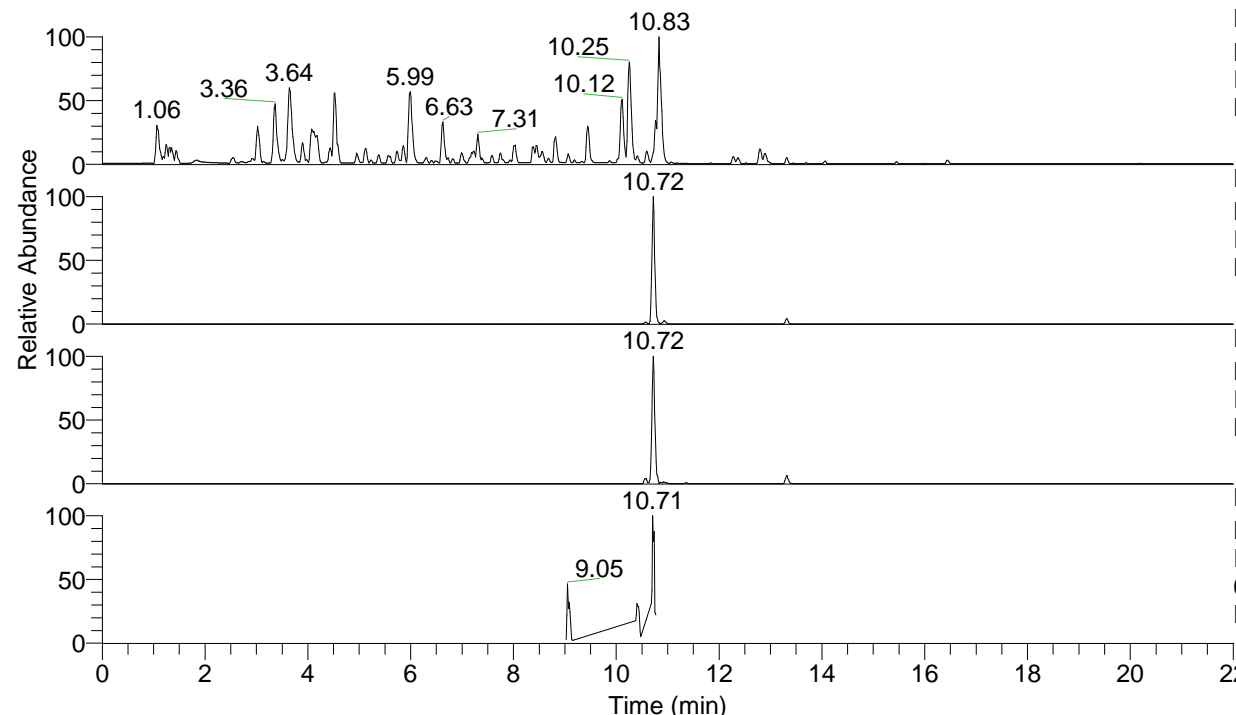


RT: 0.00 - 22.01



NL: 4.79E7
 Base Peak m/z= 100.00000-1500.00000 F:
 FTMS + p ESI Full ms [100.00-1500.00]
 MS Nclavipes

NL: 4.53E6
 Base Peak m/z= 674.43199-674.43873 F:
 FTMS + p ESI Full ms [100.00-1500.00]
 MS Nclavipes

NL: 1.90E6
 Base Peak m/z= 337.71990-337.72328 F:
 FTMS + p ESI Full ms [100.00-1500.00]
 MS Nclavipes

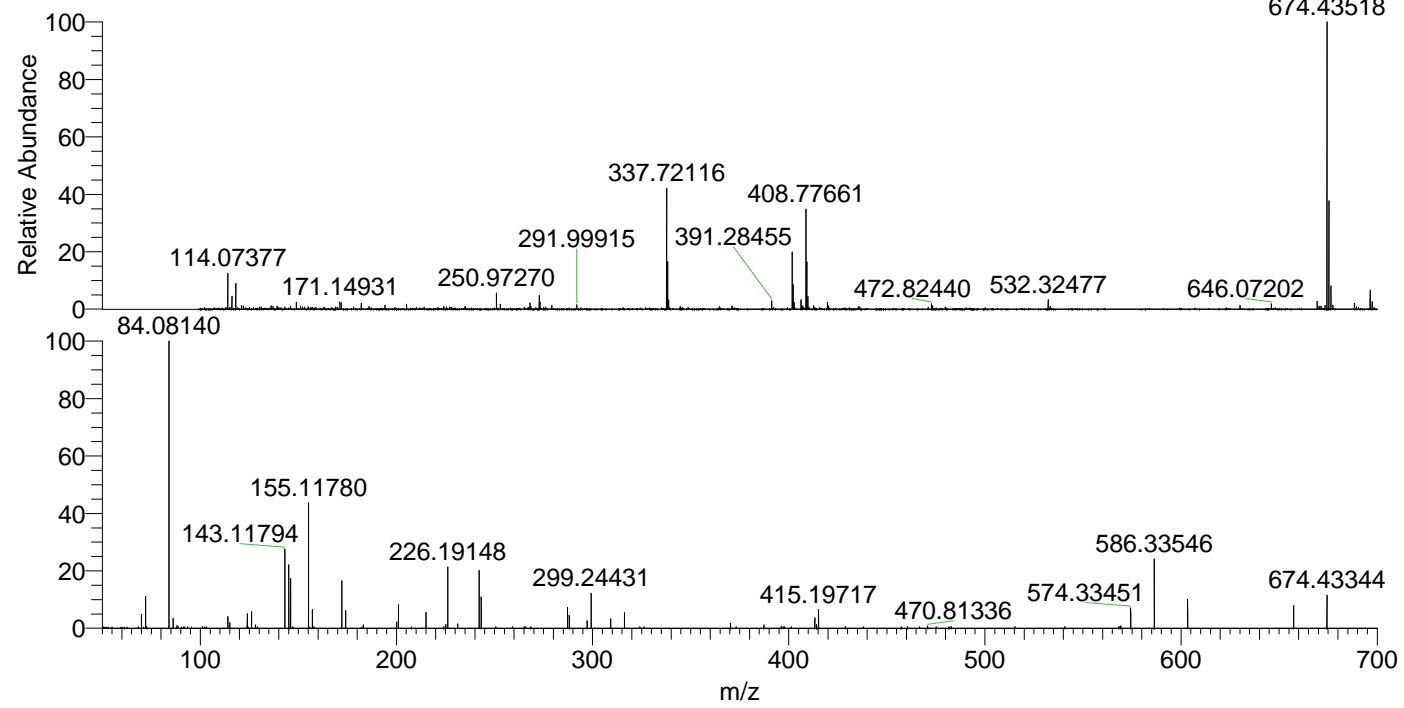
NL: 4.32E5
 Base Peak m/z= 50.00000-1500.00000 F:
 FTMS + p ESI d Full ms2
 674.41@hcd35.00 [50.00-705.00] MS
 Nclavipes

Nclavipes#4253-4274 RT: 10.68-10.74

F: FTMS + p ESI d Full ms2 674.41 ...

m/z= 50.00000-1000.00000

m/z	Intensity	Relative
70.06591	12500.9	4.50
72.08157	31408.5	11.30
84.08139	277885.2	100.00
86.09698	8642.7	3.11
88.03995	2407.2	0.87
91.75248	1478.2	0.53
101.10742	1558.7	0.56
114.09181	10391.6	3.74
115.05041	5041.1	1.81
124.07600	12480.8	4.49
126.09178	14096.7	5.07
128.10717	2993.2	1.08
143.11795	77094.8	27.74
145.13371	60649.3	21.83
146.06007	46573.6	16.76
155.11790	117699.2	42.36
157.13374	16473.7	5.93
172.14450	43609.5	15.69
174.05497	16658.2	5.99
174.16099	1557.2	0.56
183.11250	2978.9	1.07
200.13976	5438.3	1.96
201.06624	21984.9	7.91
215.08192	15189.5	5.47
225.12328	3141.2	1.13
226.19174	59420.4	21.38
231.21882	3740.1	1.35
242.15012	56174.8	20.22
243.21805	27712.1	9.97
287.24397	18661.2	6.72
288.09782	11067.1	3.98
297.22842	7671.9	2.76
299.24449	34203.2	12.31
309.22923	8078.1	2.91
316.27060	14457.7	5.20
370.31942	4409.9	1.59
387.34279	2854.6	1.03
396.25947	1788.0	0.64
413.28730	9136.8	3.29
414.21296	3184.5	1.15
415.19761	16225.6	5.84
460.55600	1520.5	0.55
470.81345	1771.2	0.64
568.32570	1524.9	0.55
569.29935	2161.2	0.78
574.33391	17620.5	6.34
586.33497	65743.6	23.66
603.36063	26629.9	9.58
657.40895	19944.8	7.18
674.43281	29506.6	10.62



NL: 4.39E6
 Nclavipes#4267 RT: 10.72
 AV: 1 T: FTMS + p ESI
 Full lock ms
 [100.00-1500.00]

NL: 3.12E5
 Nclavipes#4258-4278 RT:
 10.69-10.74 AV: 4 F:
 FTMS + p ESI d Full ms2
 674.41@hcd35.00
 [50.00-705.00]