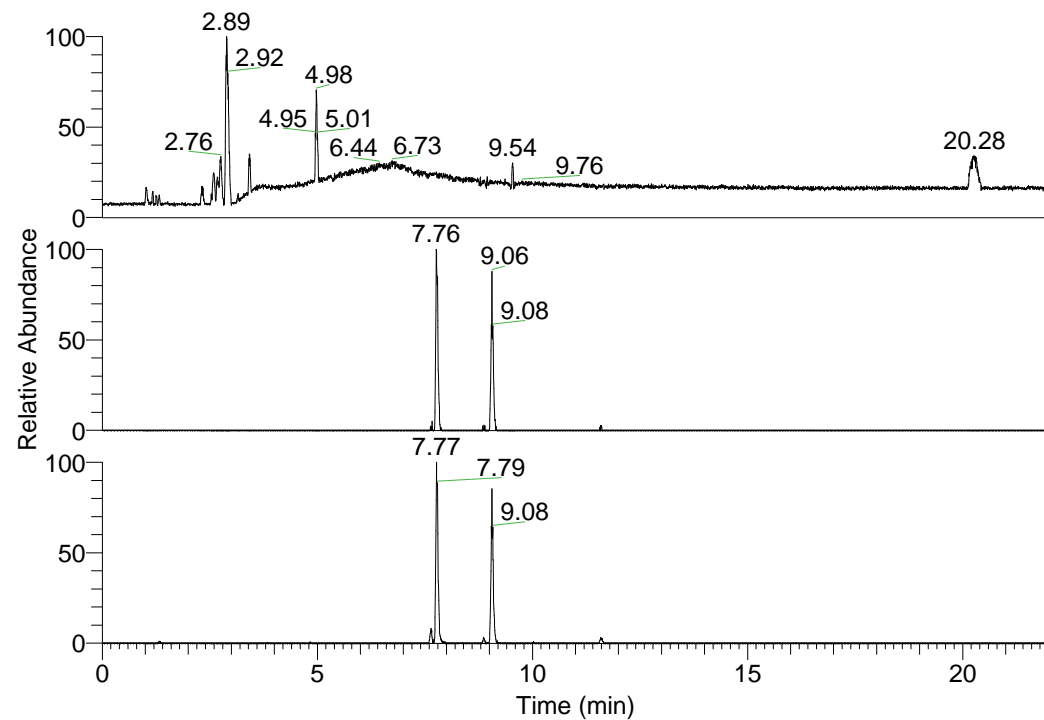


RT: 0.00 - 22.01



NL: 1.01E8
 Base Peak m/z=
 100.00000-1500.00000 F:
 FTMS + p ESI Full ms
 [100.00-1500.00] MS
 Nclavipes_HDX

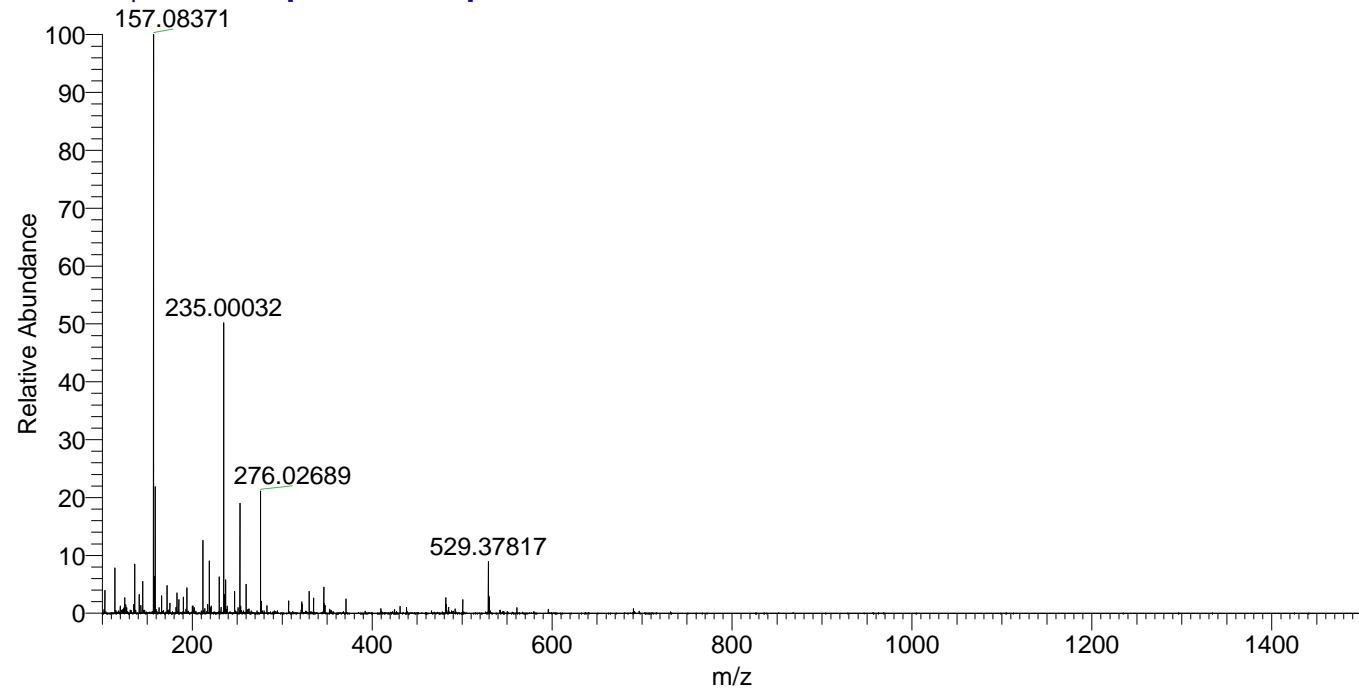
NL: 2.00E5
 Base Peak m/z=
 690.50718-690.51408 F:
 FTMS + p ESI Full ms
 [100.00-1500.00] MS
 Nclavipes_HDX

NL: 1.17E6
 Base Peak m/z=
 346.26064-346.26410 F:
 FTMS + p ESI Full ms
 [100.00-1500.00] MS
 Nclavipes_HDX

Nclavipes_HDX#1453 RT: 9.06
 T: FTMS + p ESI Full ms [100.00-1500.00]
 m/z= 690.00000-691.00000

m/z	Intensity	Relative	Delta (ppm)	Composition
690.51056	175955.4	100.00	0.69	C ₃₁ H ₃₆ ² H ₁₆ O ₆ N ₁₁
			-1.55	C ₃₁ H ₃₈ ² H ₁₅ O ₆ N ₁₁
			2.93	C ₃₁ H ₃₄ ² H ₁₇ O ₆ N ₁₁
			-3.79	C ₃₁ H ₄₀ ² H ₁₄ O ₆ N ₁₁

Nclavipes_HDX #1453 RT: 9.06 AV: 1 NL: 2.07E7
 T: FTMS + p ESI Full ms [100.00-1500.00]



Nclavipes_HDX #1453 RT: 9.06 AV: 1 NL: 1.65E5
 T: FTMS + p ESI Full ms [100.00-1500.00]

