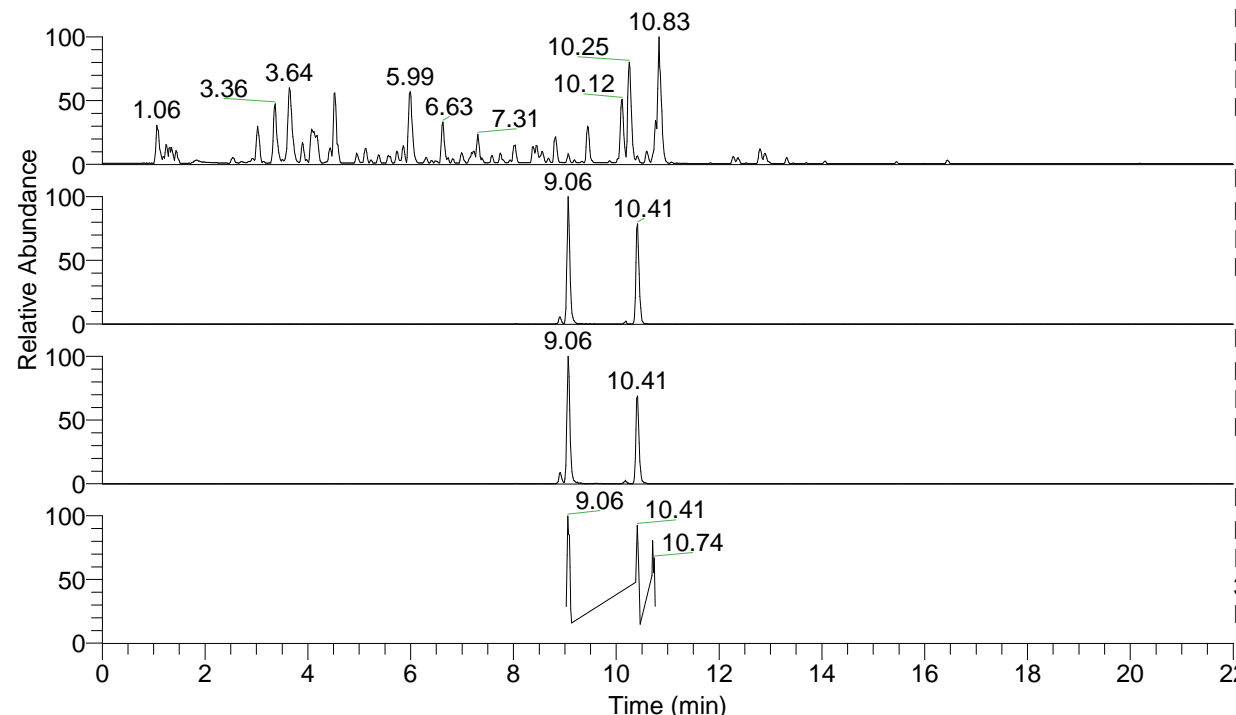


RT: 0.00 - 22.01



NL: 4.79E7
 Base Peak m/z= 100.00000-1500.00000 F:
 FTMS + p ESI Full ms [100.00-1500.00]
 MS Nclavipes

NL: 4.02E6
 Base Peak m/z= 674.40683-674.41357 F:
 FTMS + p ESI Full ms [100.00-1500.00]
 MS Nclavipes

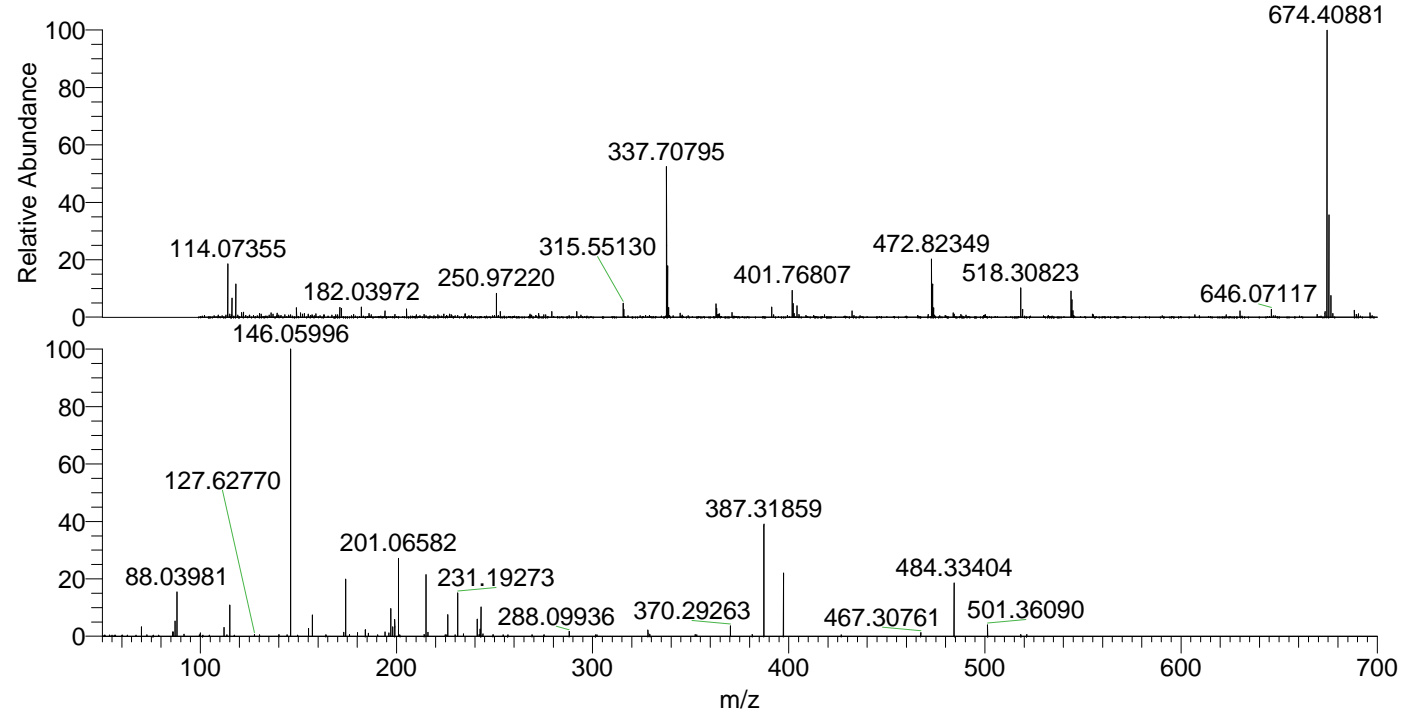
NL: 2.37E6
 Base Peak m/z= 337.70732-337.71070 F:
 FTMS + p ESI Full ms [100.00-1500.00]
 MS Nclavipes

NL: 2.56E5
 Base Peak m/z= 50.00000-1500.00000 F:
 FTMS + p ESI d Full ms2
 337.71@hcd35.00 [50.00-705.00] MS
 Nclavipes

Nclavipes#4134-4161 RT: 10.38-10.45

F: FTMS + p ESI d Full ms2 337.71 ...
 m/z= 50.00000-1000.00000

m/z	Intensity	Relative
70.06590	4078.9	2.60
86.06049	1871.6	1.19
86.09690	1801.1	1.15
87.05584	7838.0	4.99
88.03987	23251.2	14.80
91.75222	922.7	0.59
100.08734	1463.8	0.93
101.24508	1014.7	0.65
112.08718	4877.6	3.11
115.05049	16672.2	10.61
146.06002	157082.5	100.00
155.11762	3352.0	2.13
157.10838	11764.2	7.49
173.07164	1674.5	1.07
174.05484	30749.0	19.58
180.11339	2161.2	1.38
184.14496	3491.0	2.22
185.65015	1298.4	0.83
194.16296	1821.8	1.16
196.15570	1392.3	0.89
197.13988	13971.3	8.89
198.05536	4760.5	3.03
199.15500	8210.7	5.23
201.06596	42146.9	26.83
215.08155	33643.2	21.42
216.06532	1643.5	1.05
226.16663	10159.8	6.47
231.19277	23343.1	14.86
231.21812	19172.5	12.21
234.15787	1580.2	1.01
241.20166	8403.9	5.35
242.67118	3717.8	2.37
243.07638	4763.0	3.03
243.19298	14351.8	9.14
244.06040	974.3	0.62
288.09944	2016.7	1.28
328.23451	3369.5	2.15
329.19312	832.2	0.53
352.28267	796.7	0.51
370.29268	5542.7	3.53
387.31897	61895.6	39.40
397.30262	32448.3	20.66
467.30756	1492.4	0.95
484.33442	27751.8	17.67
501.36067	5526.8	3.52



NL: 3.11E6
 Nclavipes#4147 RT: 10.41
 AV: 1 T: FTMS + p ESI
 Full lock ms
 [100.00-1500.00]

NL: 1.82E5
 Nclavipes#4135-4158 RT:
 10.39-10.44 AV: 4 F:
 FTMS + p ESI d Full ms2
 337.71@hcd35.00
 [50.00-705.00]