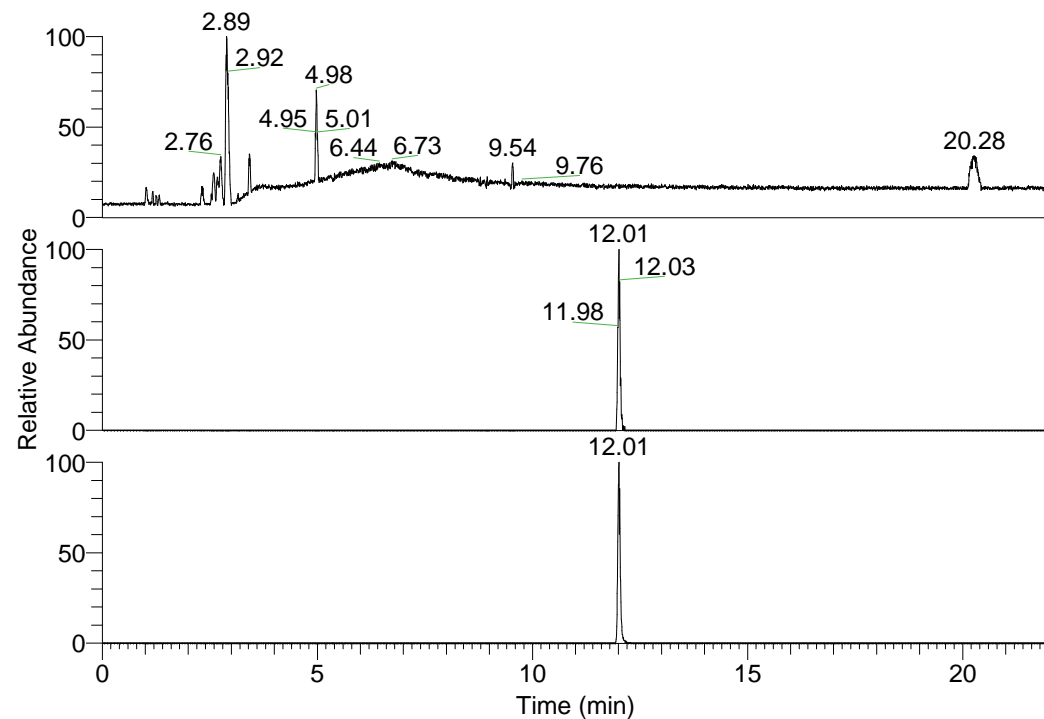


RT: 0.00 - 22.01

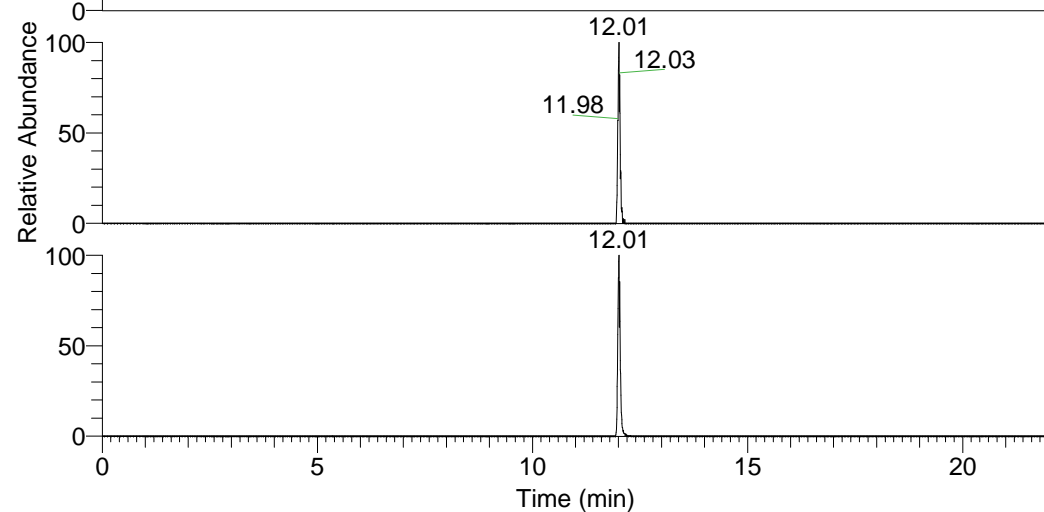


NL: 1.01E8  
 Base Peak m/z=  
 100.00000-1500.00000 F:  
 FTMS + p ESI Full ms  
 [100.00-1500.00] MS  
 Nclavipes\_HDX

Nclavipes\_HDX#1931 RT: 12.01  
 T: FTMS + p ESI Full ms [100.00-1500.00]

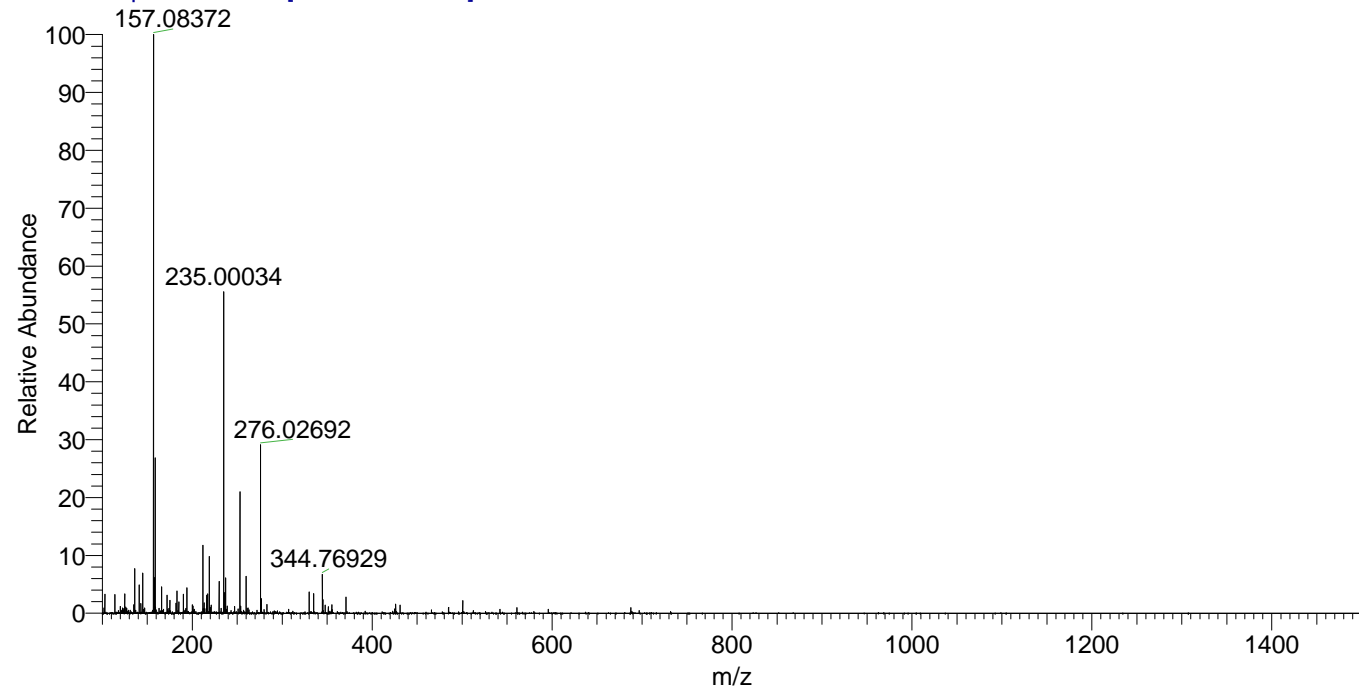
m/z = 687.00000-688.00000

m/z	Intensity	Relative	Delta (ppm)	Composition
687.52496	160764.3	100.00	0.61	C <sub>32</sub> H <sub>39</sub> <sup>2</sup> H <sub>15</sub> O <sub>5</sub> N <sub>11</sub>
			-1.64	C <sub>32</sub> H <sub>41</sub> <sup>2</sup> H <sub>14</sub> O <sub>5</sub> N <sub>11</sub>
			2.87	C <sub>32</sub> H <sub>37</sub> <sup>2</sup> H <sub>16</sub> O <sub>5</sub> N <sub>11</sub>
			-3.89	C <sub>32</sub> H <sub>43</sub> <sup>2</sup> H <sub>13</sub> O <sub>5</sub> N <sub>11</sub>



NL: 1.76E5  
 Base Peak m/z=  
 687.52165-687.52853 F:  
 FTMS + p ESI Full ms  
 [100.00-1500.00] MS  
 Nclavipes\_HDX

Nclavipes\_HDX #1931 RT: 12.01 AV: 1 NL: 1.64E7  
 T: FTMS + p ESI Full ms [100.00-1500.00]



Nclavipes\_HDX #1931 RT: 12.01 AV: 1 NL: 1.56E5  
 T: FTMS + p ESI Full ms [100.00-1500.00]

