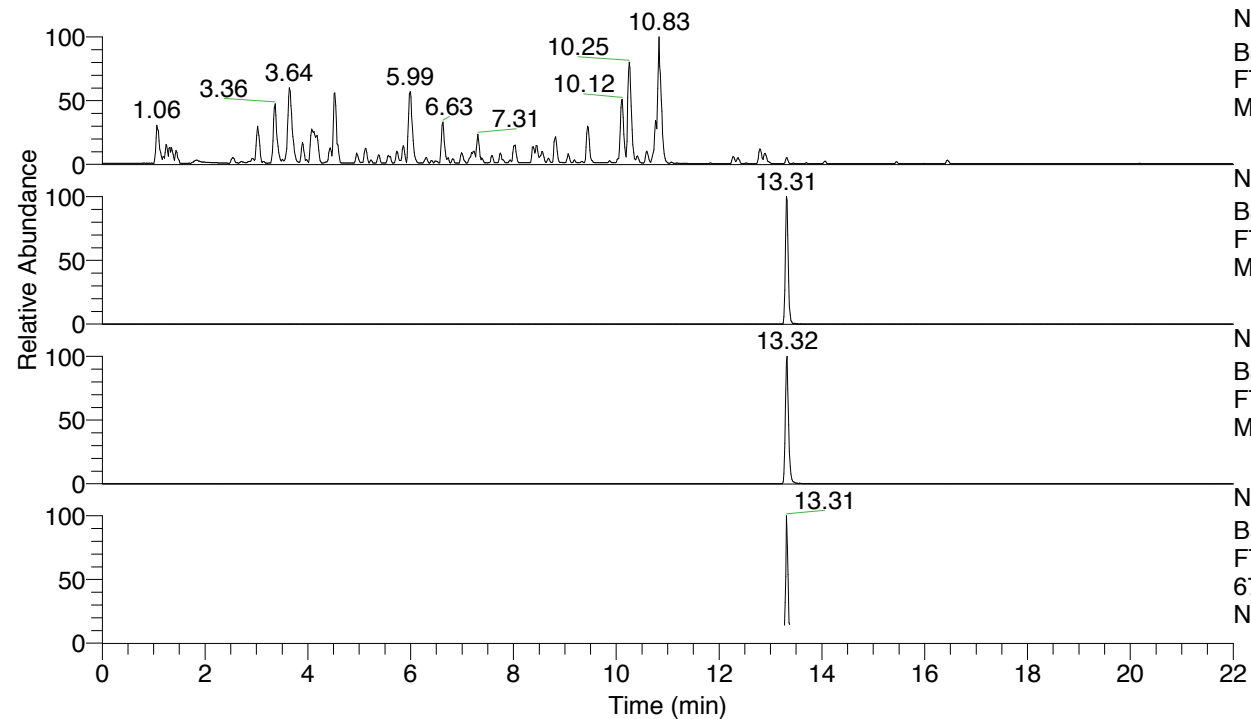


RT: 0.00 - 22.01



NL: 4.79E7
 Base Peak m/z= 100.00000-1500.00000 F:
 FTMS + p ESI Full ms [100.00-1500.00]
 MS Nclavipes

NL: 2.57E6
 Base Peak m/z= 672.42758-672.43430 F:
 FTMS + p ESI Full ms [100.00-1500.00]
 MS Nclavipes

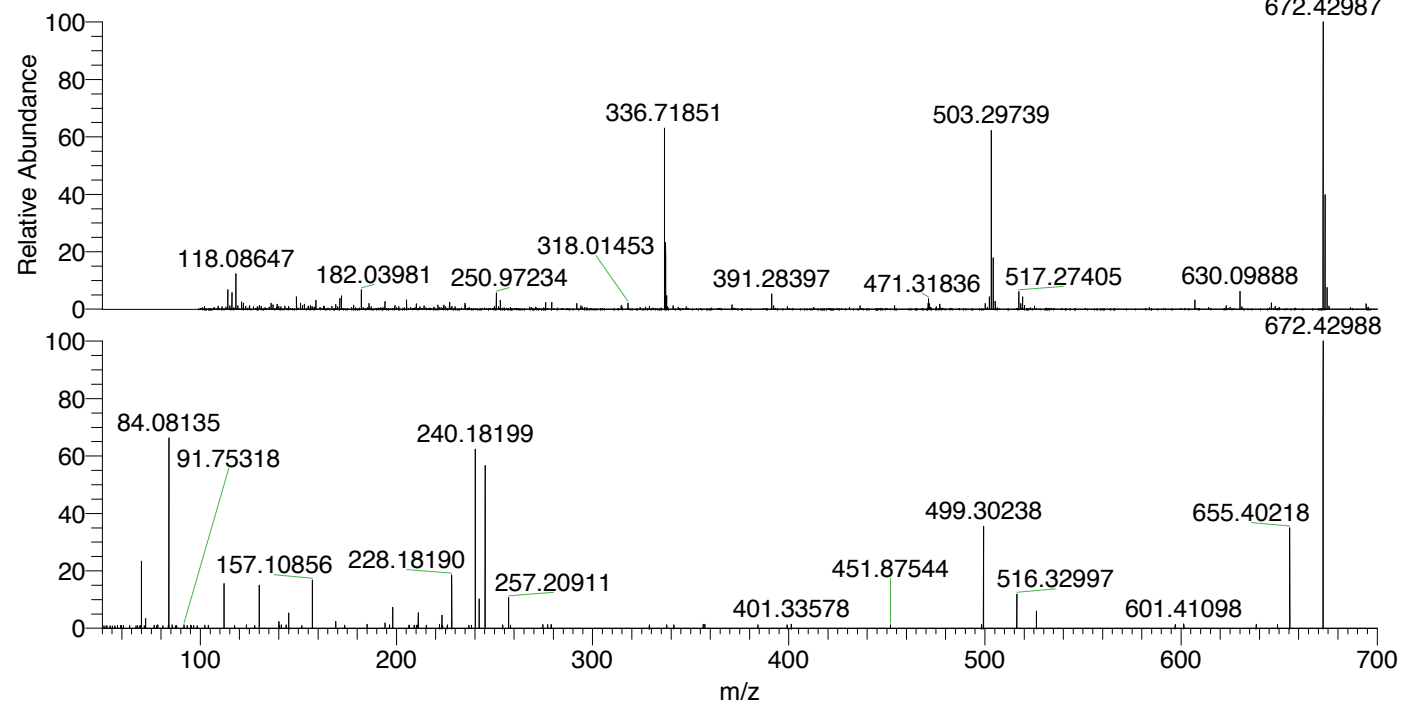
NL: 1.64E6
 Base Peak m/z= 336.71770-336.72106 F:
 FTMS + p ESI Full ms [100.00-1500.00]
 MS Nclavipes

NL: 1.71E5
 Base Peak m/z= 50.00000-1500.00000 F:
 FTMS + p ESI d Full ms2
 672.43@hcd35.00 [50.00-705.00] MS
 Nclavipes

Nclavipes#5290-5312 RT: 13.29-13.34

F: FTMS + p ESI d Full ms2 672.43 ...
 m/z= 50.00000-1000.00000

m/z	Intensity	Relative
70.06587	24167.9	23.29
72.08154	3603.3	3.47
78.27292	1218.1	1.17
83.90556	1181.6	1.14
84.08135	68456.7	65.98
85.70132	1261.0	1.22
91.75318	1180.4	1.14
104.15781	1172.7	1.13
112.08745	16540.2	15.94
123.59423	1246.4	1.20
130.06544	15959.3	15.38
140.08161	2323.8	2.24
141.33152	1244.0	1.20
143.72936	1159.1	1.12
145.13369	5548.8	5.35
157.10856	17492.3	16.86
169.10903	2450.7	2.36
185.07116	1458.8	1.41
194.12976	1869.6	1.80
196.41107	1222.6	1.18
198.16045	7671.9	7.39
211.05369	1256.1	1.21
211.15573	5656.7	5.45
221.99256	1384.5	1.33
223.15608	4701.4	4.53
228.18190	19249.9	18.55
228.20474	2370.3	2.28
236.93563	1168.9	1.13
240.18199	65751.2	63.37
242.15064	10867.3	10.47
245.20821	58926.8	56.79
254.15023	1264.8	1.22
257.20911	11008.5	10.61
274.66412	1352.3	1.30
277.13411	1295.0	1.25
278.88393	1279.5	1.23
328.91546	1217.3	1.17
337.80063	1267.2	1.22
341.45771	1249.2	1.20
356.39613	1451.8	1.40
357.19155	1424.1	1.37
384.31035	1168.6	1.13
399.20358	1247.4	1.20
401.33578	1477.8	1.42
451.87544	1242.3	1.20
498.35317	1346.2	1.30
499.30238	36586.0	35.26
516.32997	12264.3	11.82
526.31385	6161.5	5.94
597.04294	1316.6	1.27
601.41098	1517.9	1.46
638.37899	1450.3	1.40
649.19091	1308.4	1.26
655.40218	36210.7	34.90
672.42988	103757.2	100.00



NL: 2.48E6
 Nclavipes#5299 RT: 13.31
 AV: 1 T: FTMS + p ESI
 Full lock ms
 [100.00-1500.00]

NL: 1.03E5
 Nclavipes#5288-5317 RT:
 13.29-13.34 AV: 5 F:
 FTMS + p ESI d Full ms2
 672.43@hcd35.00
 [50.00-705.00]

Nclavipes#5290-5312 RT: 13.29-13.34 AV: 5

F: FTMS + p ESI d Full ms2 672.43@hcd35.00 [50.00-705.00]

m/z= 50.00000-1000.00000

m/z	Intensity	Relative
50.86231	896.4	0.86
52.04559	819.2	0.79
52.36108	905.7	0.87
52.44392	795.5	0.77
53.93224	862.6	0.83
55.18572	792.9	0.76
56.41854	818.1	0.79
57.68161	950.1	0.92
59.34949	937.6	0.90
59.88476	971.3	0.94
60.93037	1024.3	0.99
64.00094	954.8	0.92
67.25294	914.4	0.88
68.09061	1022.9	0.99
69.13260	878.3	0.85
69.43258	938.0	0.90
70.00512	1015.7	0.98
70.06587	24167.9	23.29
71.40714	907.0	0.87
72.07171	965.2	0.93
72.08154	3603.3	3.47
76.54411	1141.0	1.10
77.65892	861.3	0.83
78.27292	1218.1	1.17
80.95635	903.6	0.87
83.76021	1053.2	1.02
83.90556	1181.6	1.14
84.08135	68456.7	65.98
85.70132	1261.0	1.22
87.36592	911.6	0.88
87.98415	949.7	0.92
91.75318	1180.4	1.14
93.35414	965.1	0.93
95.19037	1085.0	1.05
95.39359	901.0	0.87
96.61693	974.0	0.94
98.36912	902.9	0.87
102.29520	1098.4	1.06
104.15781	1172.7	1.13

Nclavipes#5290-5312 RT: 13.29-13.34 AV: 5

F: FTMS + p ESI d Full ms2 672.43@hcd35.00 [50.00-705.00]

m/z= 50.00000-1000.00000

m/z	Intensity	Relative
112.08745	16540.2	15.94
117.40956	1003.7	0.97
123.59423	1246.4	1.20
127.79064	1020.3	0.98
130.06544	15959.3	15.38
140.08161	2323.8	2.24
140.27871	992.1	0.96
141.33152	1244.0	1.20
143.72936	1159.1	1.12
145.13369	5548.8	5.35
151.78890	998.7	0.96
157.10856	17492.3	16.86
169.10903	2450.7	2.36
173.67118	1129.6	1.09
185.07116	1458.8	1.41
194.12976	1869.6	1.80
196.41107	1222.6	1.18
198.16045	7671.9	7.39
206.44704	1071.1	1.03
206.50905	1072.0	1.03
209.04928	1149.3	1.11
210.16886	1127.6	1.09
211.05369	1256.1	1.21
211.15573	5656.7	5.45
215.23939	1077.1	1.04
221.99256	1384.5	1.33
223.15608	4701.4	4.53
223.57103	1013.1	0.98
225.92917	1151.2	1.11
228.18190	19249.9	18.55
228.20474	2370.3	2.28
236.93563	1168.9	1.13
238.19137	1148.8	1.11
240.18199	65751.2	63.37
242.15064	10867.3	10.47
245.20821	58926.8	56.79
254.15023	1264.8	1.22
257.20911	11008.5	10.61
258.10734	1146.9	1.11

Nclavipes#5290-5312 RT: 13.29-13.34 AV: 5

F: FTMS + p ESI d Full ms2 672.43@hcd35.00 [50.00-705.00]

m/z= 50.00000-1000.00000

m/z	Intensity	Relative
274.66412	1352.3	1.30
277.13411	1295.0	1.25
278.88393	1279.5	1.23
279.01399	1156.3	1.11
328.91546	1217.3	1.17
337.80063	1267.2	1.22
341.45771	1249.2	1.20
356.39613	1451.8	1.40
357.19155	1424.1	1.37
384.31035	1168.6	1.13
399.20358	1247.4	1.20
401.33578	1477.8	1.42
451.87544	1242.3	1.20
498.35317	1346.2	1.30
499.30238	36586.0	35.26
516.32997	12264.3	11.82
526.31385	6161.5	5.94
597.04294	1316.6	1.27
601.41098	1517.9	1.46
638.37899	1450.3	1.40
649.19091	1308.4	1.26
655.40218	36210.7	34.90
672.42988	103757.2	100.00