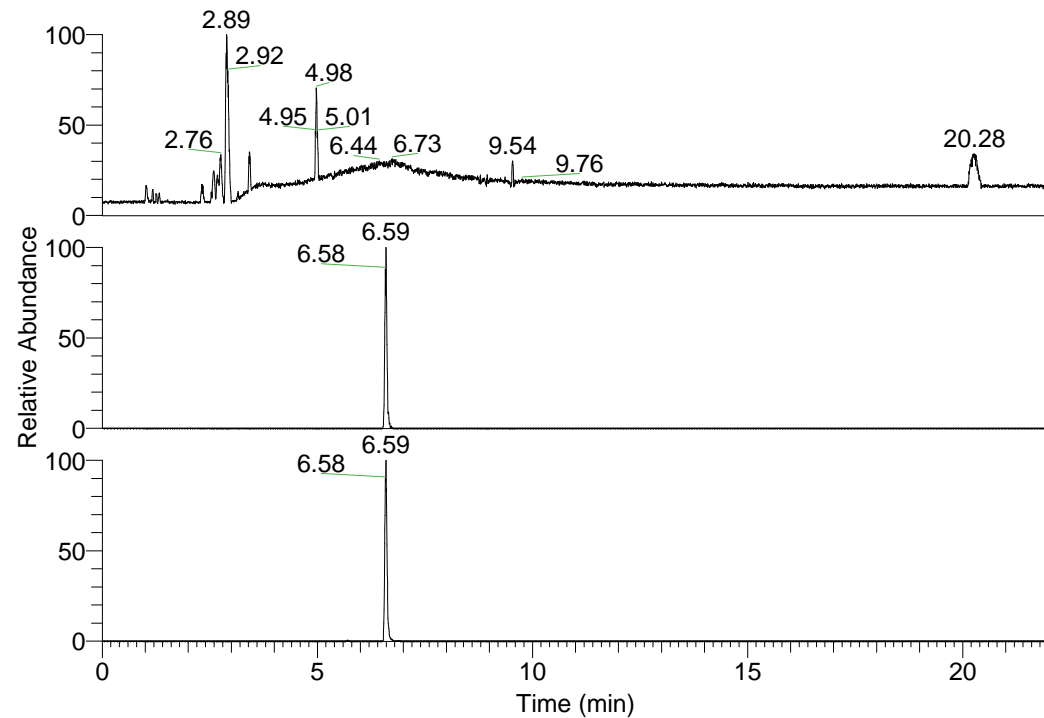


RT: 0.00 - 22.01



NL: 1.01E8
Base Peak m/z=
100.00000-1500.00000 F:
FTMS + p ESI Full ms
[100.00-1500.00] MS
Nclavipes_HDX

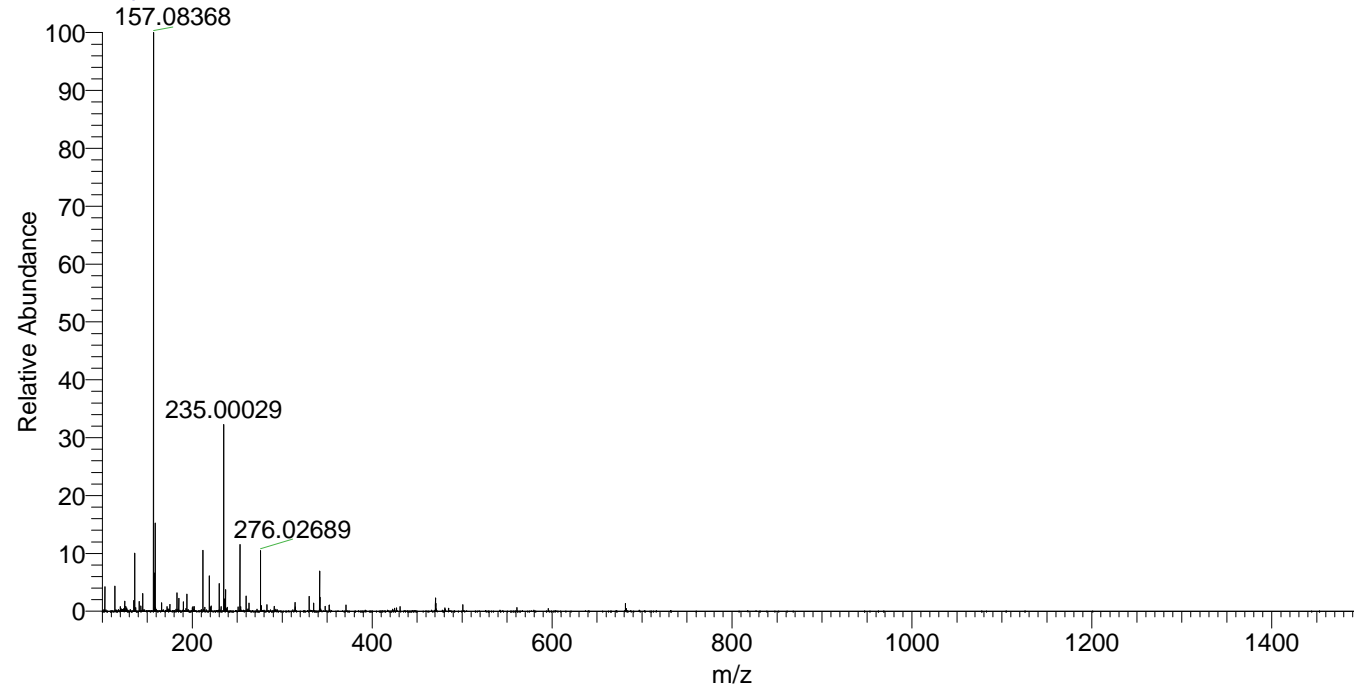
NL: 5.00E5
Base Peak m/z=
681.50689-681.51371 F:
FTMS + p ESI Full ms
[100.00-1500.00] MS
Nclavipes_HDX

NL: 2.29E6
Base Peak m/z=
341.76049-341.76391 F:
FTMS + p ESI Full ms
[100.00-1500.00] MS
Nclavipes_HDX

Nclavipes_HDX#1047 RT: 6.59
T: FTMS + p ESI Full ms [100.00-1500.00]
m/z= 681.00000-682.00000

m/z	Intensity	Relative	Delta (ppm)	Composition
681.51013	368928.0	100.00	0.56	C ₃₀ H ₃₇ ² H ₁₆ O ₇ N ₁₀
			-1.71	C ₃₀ H ₃₉ ² H ₁₅ O ₇ N ₁₀
			2.83	C ₃₀ H ₃₅ ² H ₁₇ O ₇ N ₁₀
			-3.98	C ₃₀ H ₄₁ ² H ₁₄ O ₇ N ₁₀

Nclavipes_HDX #1047 RT: 6.59 AV: 1 NL: 2.73E7
T: FTMS + p ESI Full ms [100.00-1500.00]



Nclavipes_HDX #1047 RT: 6.59 AV: 1 NL: 3.63E5
T: FTMS + p ESI Full ms [100.00-1500.00]

