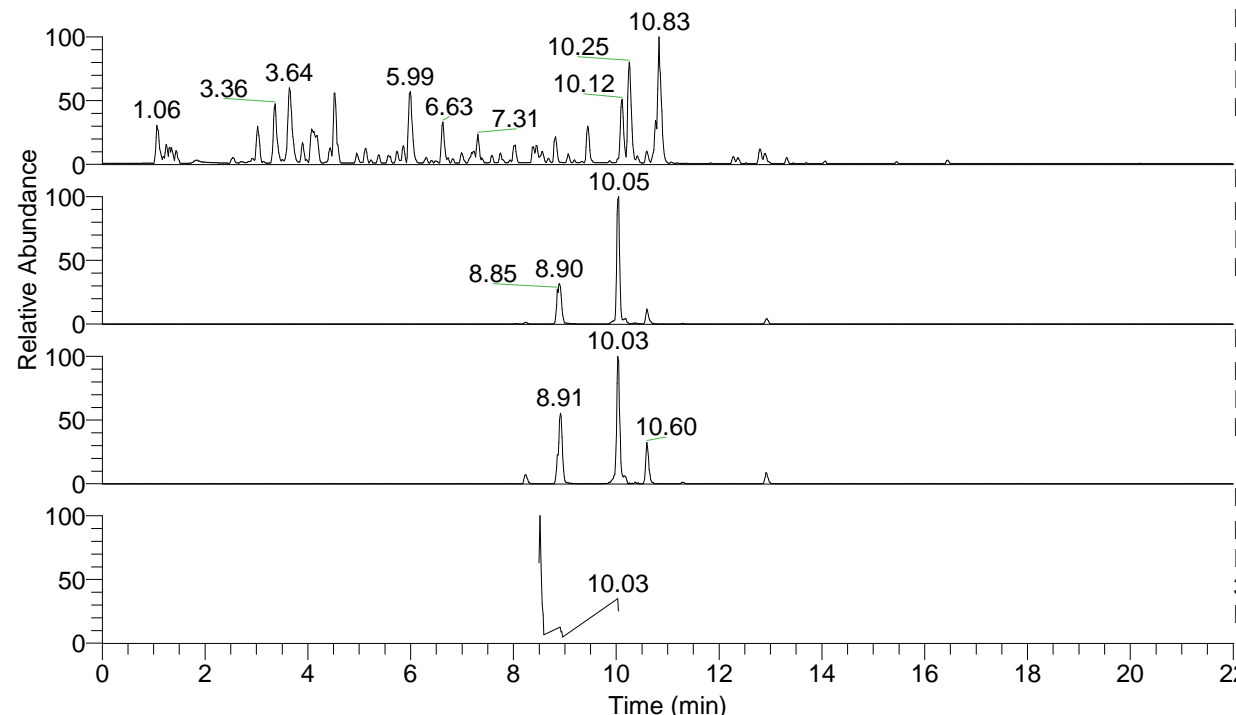


RT: 0.00 - 22.01



NL: 4.79E7  
 Base Peak m/z= 100.00000-1500.00000 F:  
 FTMS + p ESI Full ms [100.00-1500.00]  
 MS Nclavipes

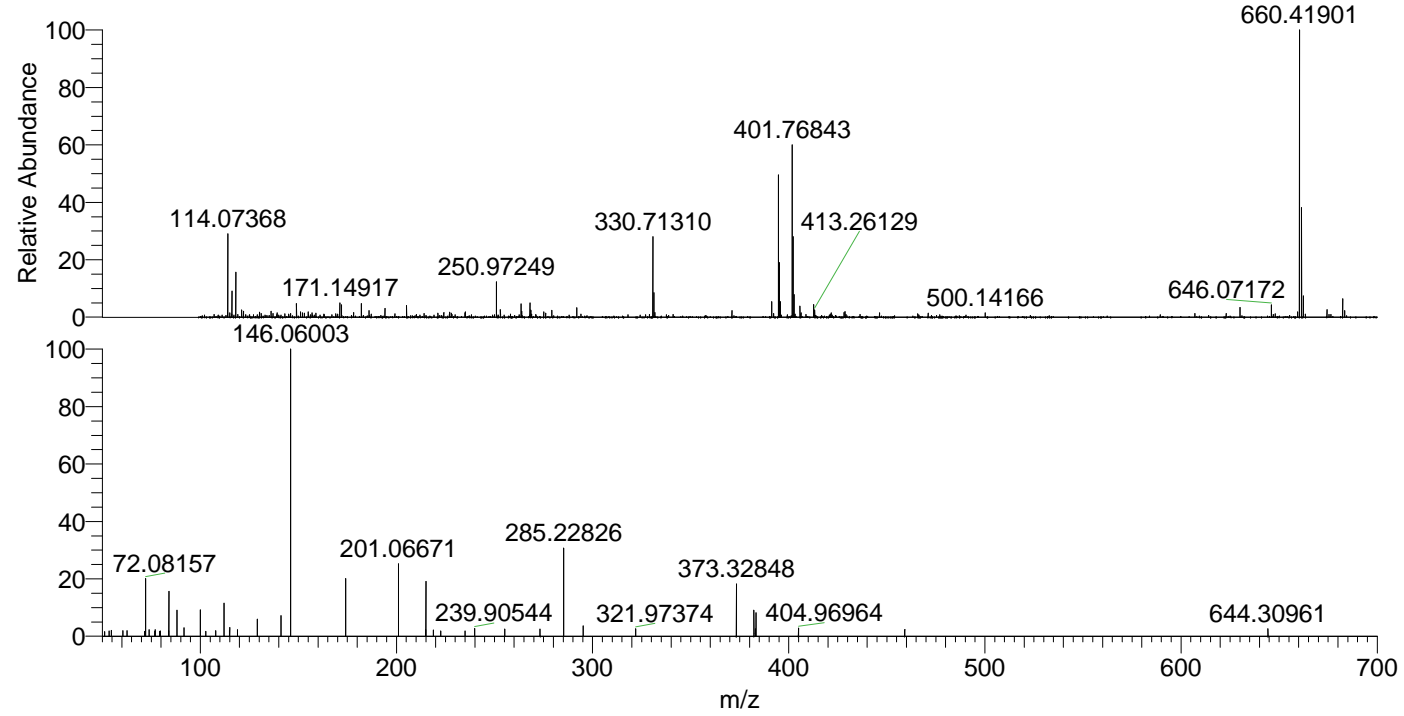
NL: 2.21E6  
 Base Peak m/z= 660.41641-660.42301 F:  
 FTMS + p ESI Full ms [100.00-1500.00]  
 MS Nclavipes

NL: 6.41E5  
 Base Peak m/z= 330.71212-330.71542 F:  
 FTMS + p ESI Full ms [100.00-1500.00]  
 MS Nclavipes

NL: 2.82E5  
 Base Peak m/z= 50.00000-1500.00000 F:  
 FTMS + p ESI d Full ms2  
 330.70@hcd35.00 [50.00-695.00] MS  
 Nclavipes

Nclavipes#3990-3995 RT: 10.03-10.04  
 F: FTMS + p ESI d Full ms2 330.70 ...  
 m/z= 50.00000-1000.00000

m/z	Intensity	Relative
51.14666	1286.4	1.58
53.57794	1427.5	1.76
54.65391	1690.6	2.08
60.59983	1518.4	1.87
62.69255	1578.5	1.94
71.59287	1375.0	1.69
72.08157	16134.6	19.85
73.83459	1834.2	2.26
76.77898	1372.5	1.69
77.03109	1845.8	2.27
79.30031	1424.1	1.75
79.68548	1481.1	1.82
83.85572	1566.6	1.93
84.08146	12326.9	15.17
88.03981	7199.7	8.86
91.75102	2396.6	2.95
100.07630	7193.0	8.85
102.84126	1411.5	1.74
107.79825	1604.3	1.97
112.07622	9421.4	11.59
114.82127	1626.9	2.00
115.05045	2426.7	2.99
118.89163	1835.6	2.26
129.10253	4698.2	5.78
141.10188	5637.3	6.94
146.06003	81266.7	100.00
146.07023	1846.3	2.27
174.05570	15896.3	19.56
201.06671	19854.8	24.43
214.88116	1816.1	2.23
215.08219	15219.1	18.73
218.80298	1731.1	2.13
222.54376	1475.9	1.82
234.91963	1473.0	1.81
239.90544	2110.4	2.60
255.22011	1983.8	2.44
273.22995	1966.6	2.42
285.22826	24379.5	30.00
295.21490	2829.2	3.48
321.97374	2091.0	2.57
373.32848	14711.3	18.10
382.24617	7064.9	8.69
383.00692	2082.1	2.56
383.31464	6456.4	7.94
404.96964	2210.3	2.72
459.13380	1886.0	2.32
644.30961	2011.6	2.48



NL: 2.16E6  
 Nclavipes#3997 RT: 10.05  
 AV: 1 T: FTMS + p ESI  
 Full lock ms  
 [100.00-1500.00]

NL: 7.81E4  
 Nclavipes#3982-3998 RT:  
 10.03-10.04 AV: 2 F:  
 FTMS + p ESI d Full ms2  
 330.70@hcd35.00  
 [50.00-695.00]