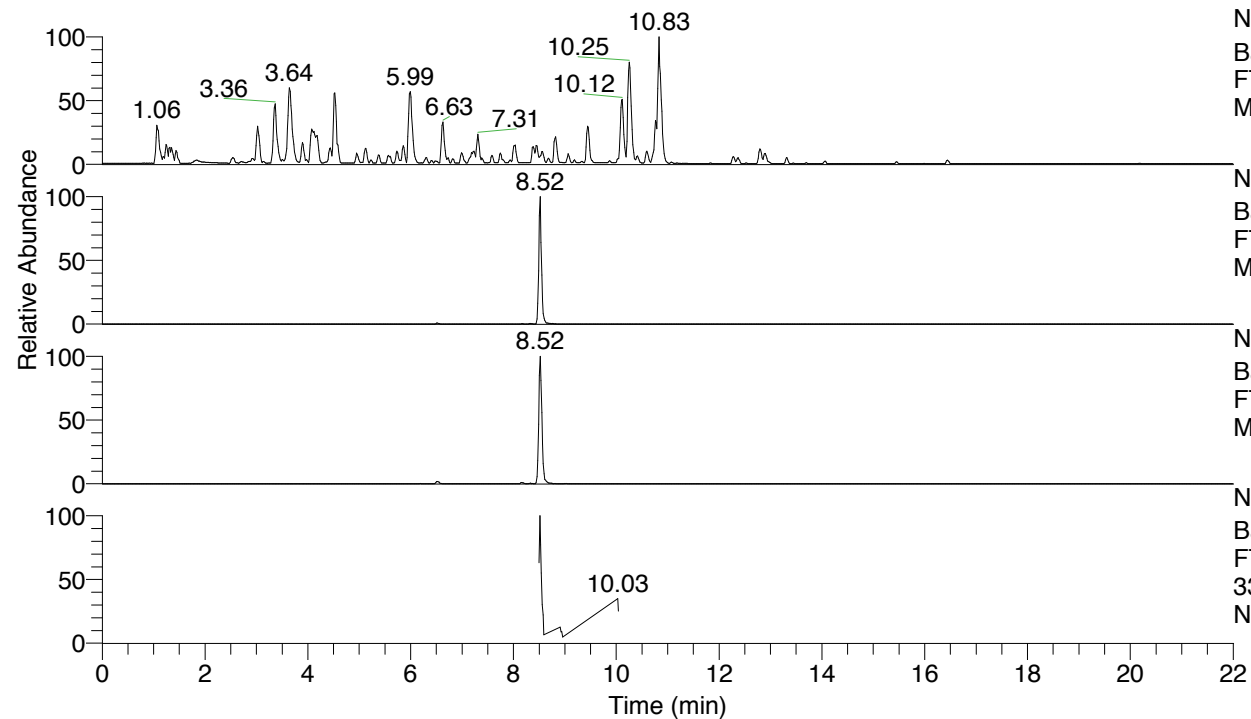


RT: 0.00 - 22.01



NL: 4.79E7
 Base Peak m/z= 100.00000-1500.00000 F:
 FTMS + p ESI Full ms [100.00-1500.00]
 MS Nclavipes

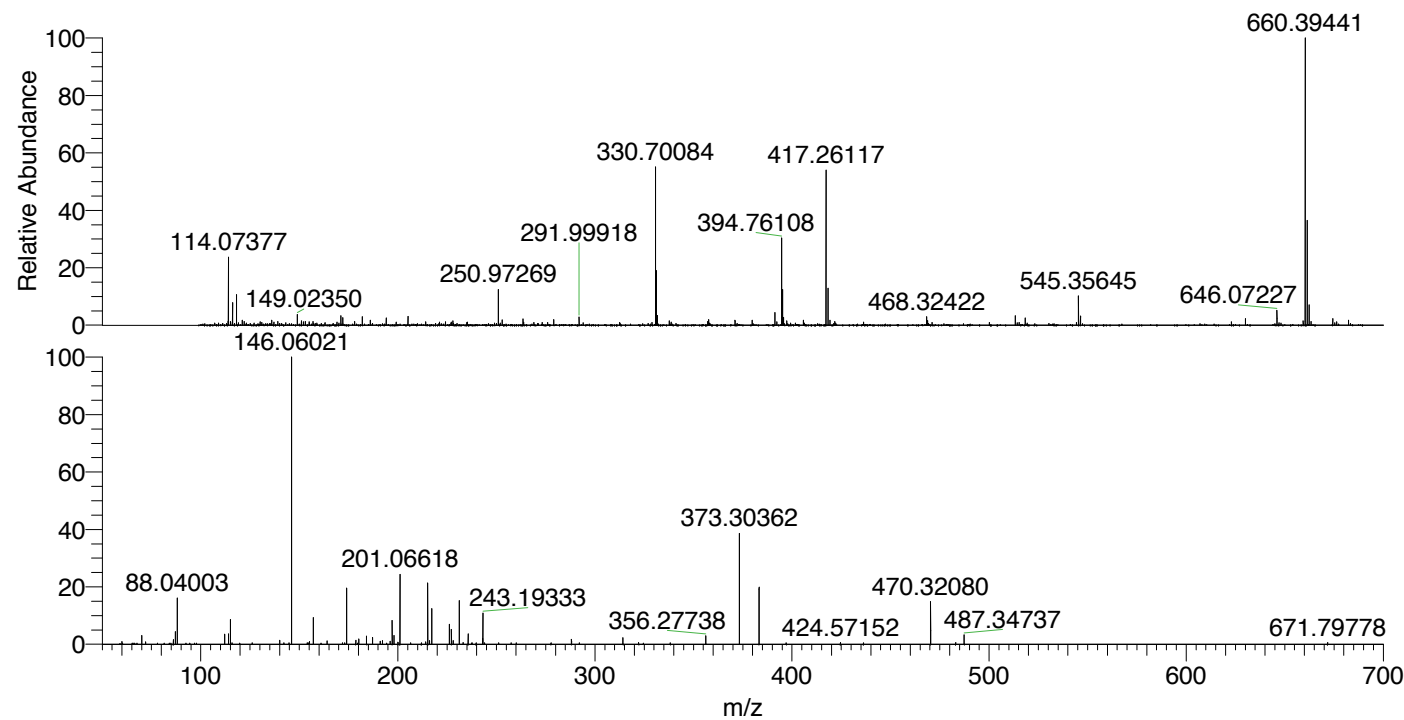
NL: 3.23E6
 Base Peak m/z= 660.39125-660.39785 F:
 FTMS + p ESI Full ms [100.00-1500.00]
 MS Nclavipes

NL: 1.77E6
 Base Peak m/z= 330.69954-330.70284 F:
 FTMS + p ESI Full ms [100.00-1500.00]
 MS Nclavipes

NL: 2.82E5
 Base Peak m/z= 50.00000-1500.00000 F:
 FTMS + p ESI d Full ms2
 330.70@hcd35.00 [50.00-695.00] MS
 Nclavipes

Nclavipes#3383-3399 RT: 8.50-8.54 AV:
 F: FTMS + p ESI d Full ms2 330.70 ...
 m/z= 50.00000-1000.00000

m/z	Intensity	Relative
60.05662	1904.7	0.96
70.06604	6252.4	3.16
72.08158	1611.4	0.81
86.06067	3304.2	1.67
87.05608	8872.4	4.48
87.09248	1122.9	0.57
88.04003	32093.0	16.20
112.08754	7010.4	3.54
114.09201	7098.0	3.58
115.05080	16888.4	8.52
140.08199	2698.8	1.36
146.06021	198105.0	100.00
155.11807	1929.2	0.97
157.10850	18467.6	9.32
164.07037	2423.8	1.22
173.07030	1084.2	0.55
174.05516	38301.4	19.33
178.64265	2672.3	1.35
180.11369	3696.5	1.87
184.14471	5608.8	2.83
187.15585	4792.2	2.42
191.08145	2067.8	1.04
192.14837	2489.0	1.26
196.15585	2143.8	1.08
197.14025	16593.8	8.38
198.05521	6102.5	3.08
200.07081	1449.7	0.73
201.06618	48236.2	24.35
214.16583	1644.9	0.83
215.08169	42909.0	21.66
216.06499	2477.0	1.25
217.20208	24395.0	12.31
226.16674	13785.8	6.96
227.15129	2396.2	1.21
227.18717	10187.1	5.14
228.13463	2498.7	1.26
231.19285	29859.4	15.07
233.09451	1304.3	0.66
235.66417	7186.7	3.63
243.07796	4071.5	2.06
243.19333	21459.0	10.83
251.15118	1035.0	0.52
260.10324	1083.4	0.55
288.09800	3276.7	1.65
314.22080	4493.2	2.27
322.18679	1168.8	0.59
356.27738	5789.8	2.92
373.30362	75737.3	38.23
383.28759	40054.7	20.22
397.04690	1061.8	0.54
424.57152	1184.5	0.60
470.32080	30174.5	15.23
483.06014	1160.8	0.59
487.34737	6388.2	3.22
671.79778	1125.7	0.57



NL: 3.09E6
 Nclavipes#3391 RT: 8.52
 AV: 1 T: FTMS + p ESI
 Full lock ms
 [100.00-1500.00]

NL: 1.96E5
 Nclavipes#3383-3404 RT:
 8.50-8.54 AV: 4 F: FTMS
 + p ESI d Full ms2
 330.70@hcd35.00
 [50.00-695.00]

Nclavipes#3383-3399 RT: 8.50-8.54 AV: 4

F: FTMS + p ESI d Full ms2 330.70@hcd35.00 [50.00-695.00]

m/z= 50.00000-1000.00000

m/z	Intensity	Relative
60.05662	1904.7	0.96
70.06604	6252.4	3.16
72.08158	1611.4	0.81
86.06067	3304.2	1.67
87.05608	8872.4	4.48
87.09248	1122.9	0.57
88.04003	32093.0	16.20
112.08754	7010.4	3.54
114.09201	7098.0	3.58
115.05080	16888.4	8.52
140.08199	2698.8	1.36
142.12190	1004.1	0.51
144.76445	1008.6	0.51
146.06021	198105.0	100.00
154.09823	1007.2	0.51
154.49532	994.9	0.50
155.11807	1929.2	0.97
157.10850	18467.6	9.32
164.07037	2423.8	1.22
173.07030	1084.2	0.55
174.05516	38301.4	19.33
178.64265	2672.3	1.35
180.11369	3696.5	1.87
184.14471	5608.8	2.83
187.15585	4792.2	2.42
191.08145	2067.8	1.04
192.14837	2489.0	1.26
196.15585	2143.8	1.08
197.14025	16593.8	8.38
198.05521	6102.5	3.08
200.07081	1449.7	0.73
201.06618	48236.2	24.35
211.94638	1029.7	0.52
214.16583	1644.9	0.83
215.08169	42909.0	21.66
216.06499	2477.0	1.25
217.20208	24395.0	12.31
226.16674	13785.8	6.96
227.15129	2396.2	1.21

Nclavipes#3383-3399 RT: 8.50-8.54 AV: 4

F: FTMS + p ESI d Full ms2 330.70@hcd35.00 [50.00-695.00]

m/z= 50.00000-1000.00000

m/z	Intensity	Relative
227.18717	10187.1	5.14
228.13463	2498.7	1.26
231.19285	29859.4	15.07
233.09451	1304.3	0.66
235.66417	7186.7	3.63
243.07796	4071.5	2.06
243.19333	21459.0	10.83
244.06161	1012.2	0.51
251.15118	1035.0	0.52
260.10324	1083.4	0.55
277.71852	1000.2	0.50
288.09800	3276.7	1.65
314.22080	4493.2	2.27
322.18679	1168.8	0.59
356.27738	5789.8	2.92
373.30362	75737.3	38.23
383.28759	40054.7	20.22
397.04690	1061.8	0.54
424.57152	1184.5	0.60
470.32080	30174.5	15.23
483.06014	1160.8	0.59
487.34737	6388.2	3.22
671.79778	1125.7	0.57