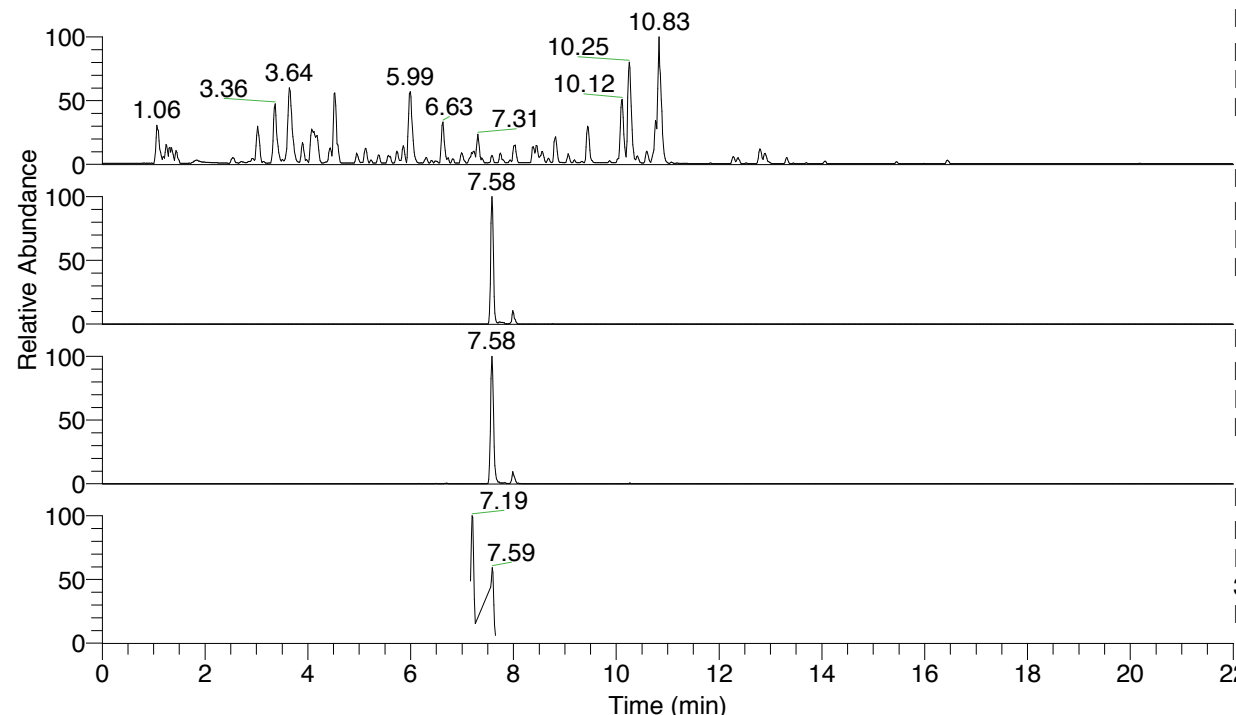


RT: 0.00 - 22.01



NL: 4.79E7
 Base Peak m/z= 100.00000-1500.00000 F:
 FTMS + p ESI Full ms [100.00-1500.00]
 MS Nclavipes

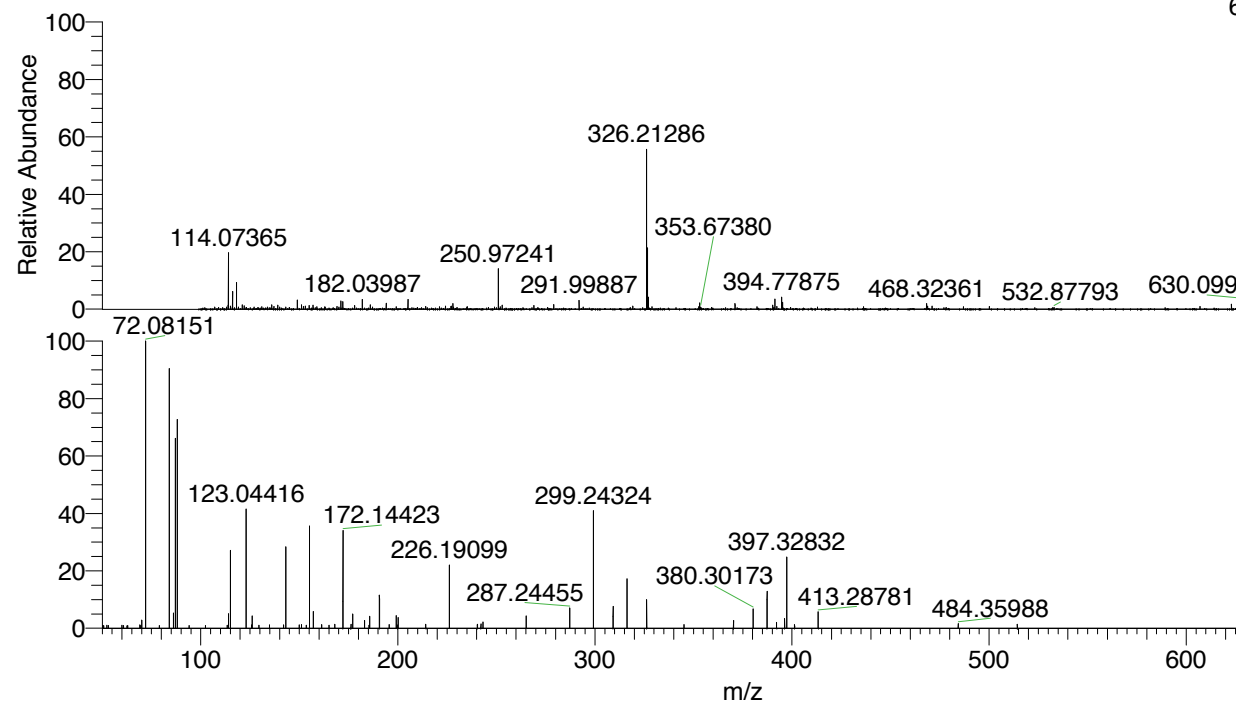
NL: 3.41E6
 Base Peak m/z= 651.41611-651.42263 F:
 FTMS + p ESI Full ms [100.00-1500.00]
 MS Nclavipes

NL: 1.91E6
 Base Peak m/z= 326.21197-326.21523 F:
 FTMS + p ESI Full ms [100.00-1500.00]
 MS Nclavipes

NL: 2.01E5
 Base Peak m/z= 50.00000-1500.00000 F:
 FTMS + p ESI d Full ms2
 326.20@hcd35.00 [50.00-685.00] MS
 Nclavipes

Nclavipes#3011-3027 RT: 7.56-7.60 AV:
 F: FTMS + p ESI d Full ms2 326.20 ...
 m/z= 50.00000-1000.00000

m/z	Intensity	Relative
70.02946	2780.8	2.84
70.06591	2170.3	2.22
72.08152	97919.9	100.00
84.08141	89153.3	91.05
86.09711	4151.4	4.24
87.05581	63575.7	64.93
88.03984	70469.7	71.97
114.09176	5012.6	5.12
115.05049	26518.1	27.08
123.04419	40211.1	41.07
126.09148	3258.2	3.33
143.11793	28249.3	28.85
145.13389	1059.2	1.08
151.03904	937.7	0.96
155.11792	34476.4	35.21
157.13414	5470.0	5.59
161.35368	997.6	1.02
168.06612	1097.1	1.12
172.14436	31598.2	32.27
176.20527	1015.4	1.04
177.14987	3737.9	3.82
183.11350	2033.9	2.08
185.66290	3177.9	3.25
190.65503	8734.7	8.92
195.63270	939.6	0.96
199.16826	3305.5	3.38
200.13896	2877.0	2.94
214.19130	1027.4	1.05
226.19116	21216.7	21.67
231.21811	1027.8	1.05
240.35758	1023.4	1.05
242.14873	1117.7	1.14
243.21833	1617.0	1.65
253.04083	1014.6	1.04
265.08240	3247.9	3.32
287.24472	6740.3	6.88
299.24337	37288.6	38.08
309.22836	6898.3	7.04
316.27039	16883.0	17.24
326.25503	8906.3	9.10
345.20023	981.5	1.00
370.31587	2036.6	2.08
380.30164	6855.1	7.00
387.34417	13750.8	14.04
392.18315	2822.6	2.88
396.26153	3515.7	3.59
397.32830	23102.3	23.59
401.29892	960.2	0.98
413.28811	5451.7	5.57
423.71001	1081.5	1.10
436.87624	1036.4	1.06
445.22295	1040.9	1.06
484.35988	1237.0	1.26
514.32266	1049.2	1.07
575.97355	1042.1	1.06



NL: 3.23E6
 Nclavipes#3019 RT: 7.58
 AV: 1 T: FTMS + p ESI
 Full lock ms
 [100.00-1500.00]

NL: 1.00E5
 Nclavipes#3014-3031 RT:
 7.57-7.60 AV: 3 F: FTMS
 + p ESI d Full ms2
 326.20@hcd35.00
 [50.00-685.00]

Nclavipes#3011-3027 RT: 7.56-7.60 AV: 4

F: FTMS + p ESI d Full ms2 326.20@hcd35.00 [50.00-685.00]

m/z= 50.00000-1000.00000

m/z	Intensity	Relative
50.29129	700.0	0.71
50.71797	717.5	0.73
52.35582	762.2	0.78
53.14654	685.2	0.70
57.16435	798.7	0.82
59.96036	834.1	0.85
60.78096	684.6	0.70
62.57334	669.7	0.68
62.94317	691.7	0.71
67.15993	753.8	0.77
69.02162	917.5	0.94
69.50715	713.4	0.73
69.92023	735.0	0.75
70.02946	2780.8	2.84
70.06591	2170.3	2.22
72.08152	97919.9	100.00
75.29923	833.8	0.85
78.99500	769.8	0.79
84.08141	89153.3	91.05
86.09711	4151.4	4.24
87.05581	63575.7	64.93
88.03984	70469.7	71.97
94.08313	711.5	0.73
102.35837	729.3	0.74
113.41119	781.3	0.80
114.09176	5012.6	5.12
115.05049	26518.1	27.08
120.97297	805.6	0.82
123.04419	40211.1	41.07
125.82072	854.2	0.87
126.09148	3258.2	3.33
129.55432	804.7	0.82
134.91616	852.2	0.87
142.00180	900.7	0.92
143.11793	28249.3	28.85
145.13389	1059.2	1.08
149.90630	875.8	0.89
151.03904	937.7	0.96
153.52826	810.5	0.83

Nclavipes#3011-3027 RT: 7.56-7.60 AV: 4

F: FTMS + p ESI d Full ms2 326.20@hcd35.00 [50.00-685.00]

m/z= 50.00000-1000.00000

m/z	Intensity	Relative
155.11792	34476.4	35.21
157.13414	5470.0	5.59
161.35368	997.6	1.02
165.08345	803.1	0.82
168.06612	1097.1	1.12
172.14436	31598.2	32.27
176.20527	1015.4	1.04
177.14987	3737.9	3.82
183.11350	2033.9	2.08
185.35216	821.5	0.84
185.66290	3177.9	3.25
190.65503	8734.7	8.92
195.63270	939.6	0.96
199.16826	3305.5	3.38
199.73519	904.6	0.92
200.13896	2877.0	2.94
214.19130	1027.4	1.05
226.19116	21216.7	21.67
231.21811	1027.8	1.05
240.35758	1023.4	1.05
242.14873	1117.7	1.14
243.21833	1617.0	1.65
253.04083	1014.6	1.04
265.08240	3247.9	3.32
287.24472	6740.3	6.88
299.24337	37288.6	38.08
309.22836	6898.3	7.04
316.27039	16883.0	17.24
326.25503	8906.3	9.10
345.20023	981.5	1.00
370.31587	2036.6	2.08
380.30164	6855.1	7.00
387.34417	13750.8	14.04
392.18315	2822.6	2.88
396.26153	3515.7	3.59
397.32830	23102.3	23.59
401.29892	960.2	0.98
413.28811	5451.7	5.57
423.71001	1081.5	1.10

Nclavipes#3011-3027 RT: 7.56-7.60 AV: 4

F: FTMS + p ESI d Full ms2 326.20@hcd35.00 [50.00-685.00]

m/z= 50.00000-1000.00000

m/z	Intensity	Relative
436.87624	1036.4	1.06
445.22295	1040.9	1.06
484.35988	1237.0	1.26
514.32266	1049.2	1.07
575.97355	1042.1	1.06