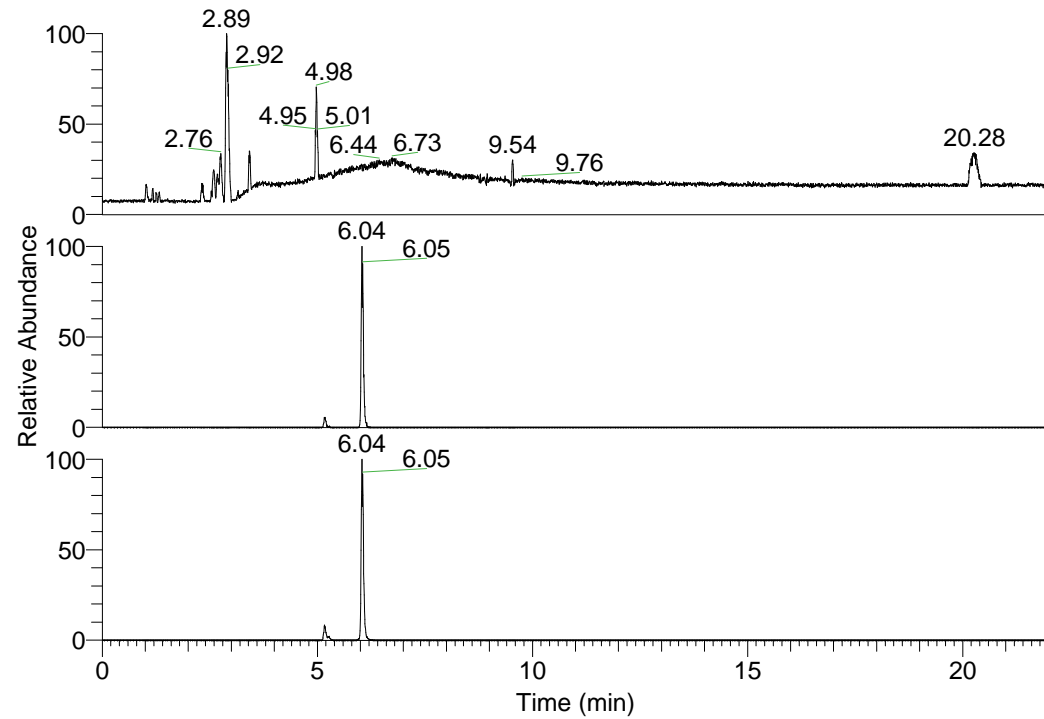


RT: 0.00 - 22.01



NL: 1.01E8  
 Base Peak m/z=  
 100.00000-1500.00000 F:  
 FTMS + p ESI Full ms  
 [100.00-1500.00] MS  
 Nclavipes\_HDX

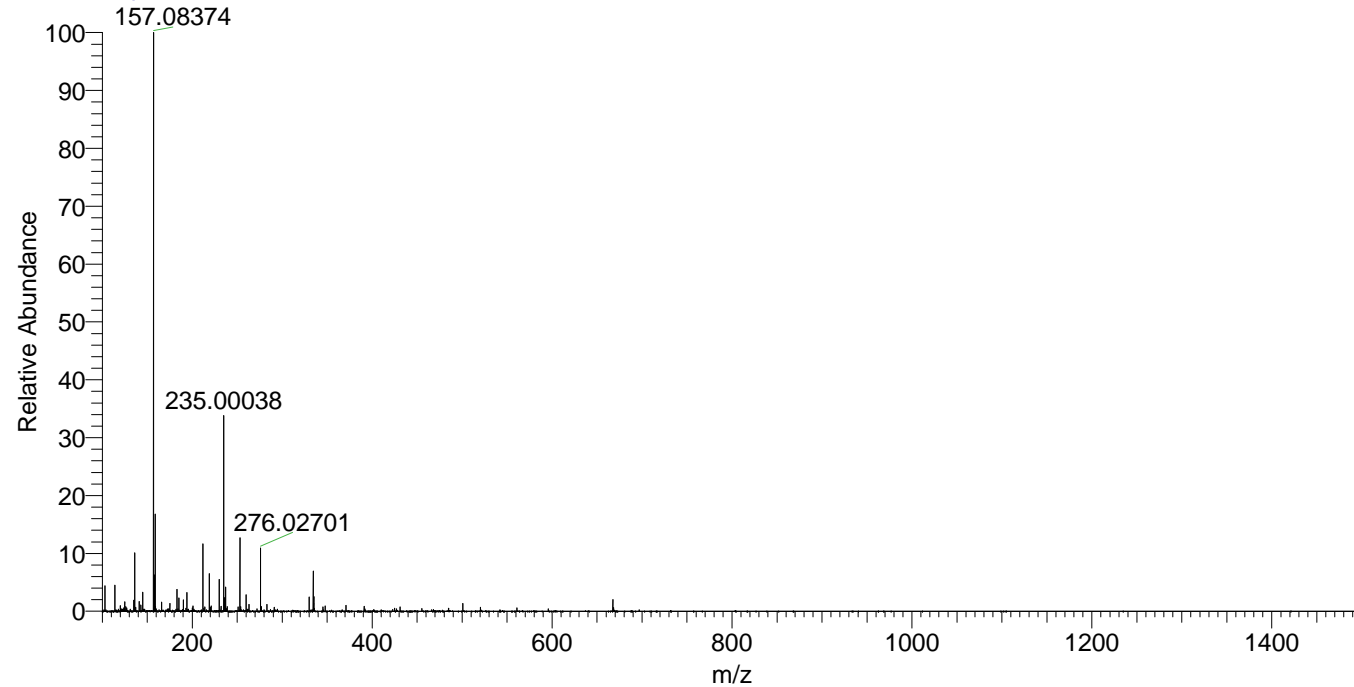
NL: 7.56E5  
 Base Peak m/z=  
 667.49131-667.49799 F:  
 FTMS + p ESI Full ms  
 [100.00-1500.00] MS  
 Nclavipes\_HDX

NL: 2.42E6  
 Base Peak m/z=  
 334.75271-334.75605 F:  
 FTMS + p ESI Full ms  
 [100.00-1500.00] MS  
 Nclavipes\_HDX

Nclavipes\_HDX#957 RT: 6.04  
 T: FTMS + p ESI Full ms [100.00-1500.00]  
 m/z= 667.00000-668.00000

m/z	Intensity	Relative	Delta (ppm)	Composition
667.49463	505092.4	100.00	0.79	C <sub>29</sub> H <sub>35</sub> <sup>2</sup> H <sub>16</sub> O <sub>7</sub> N <sub>10</sub>
			-1.52	C <sub>29</sub> H <sub>37</sub> <sup>2</sup> H <sub>15</sub> O <sub>7</sub> N <sub>10</sub>
			3.11	C <sub>29</sub> H <sub>33</sub> <sup>2</sup> H <sub>17</sub> O <sub>7</sub> N <sub>10</sub>
			-3.84	C <sub>29</sub> H <sub>39</sub> <sup>2</sup> H <sub>14</sub> O <sub>7</sub> N <sub>10</sub>

Nclavipes\_HDX #957 RT: 6.04 AV: 1 NL: 2.42E7  
 T: FTMS + p ESI Full ms [100.00-1500.00]



Nclavipes\_HDX #957 RT: 6.04 AV: 1 NL: 4.83E5  
 T: FTMS + p ESI Full ms [100.00-1500.00]

