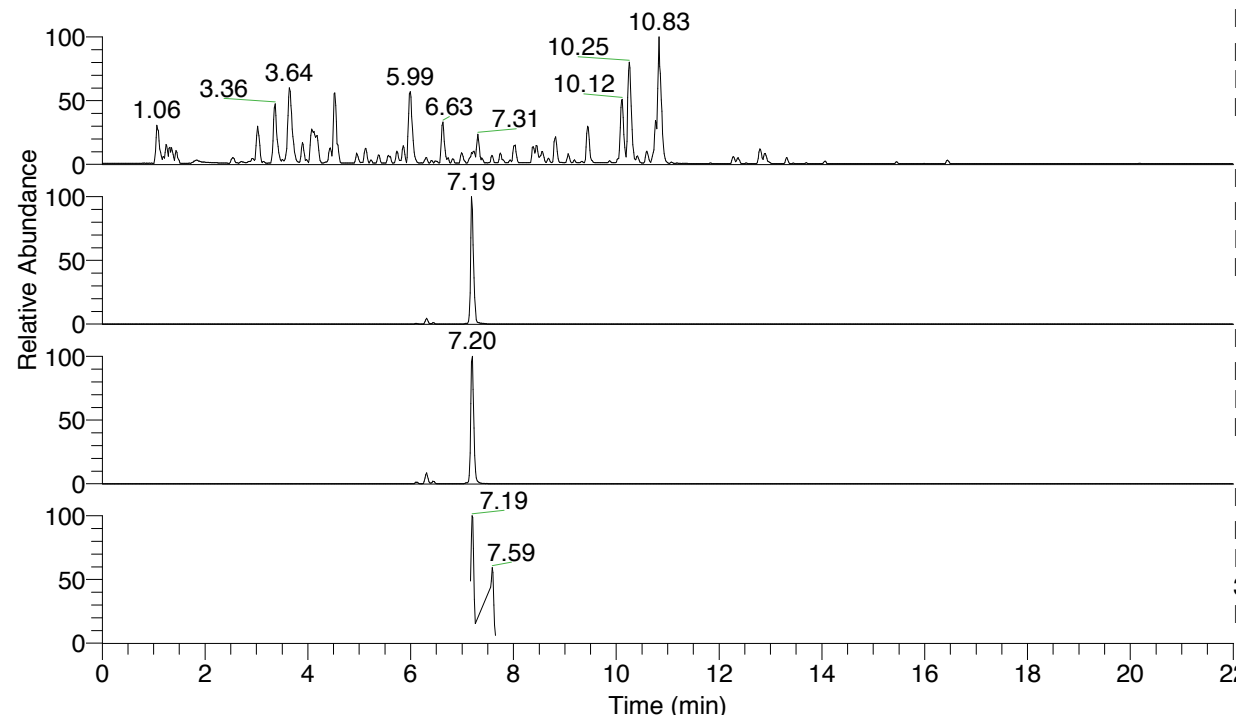


RT: 0.00 - 22.01



NL: 4.79E7  
 Base Peak m/z= 100.00000-1500.00000 F:  
 FTMS + p ESI Full ms [100.00-1500.00]  
 MS Nclavipes

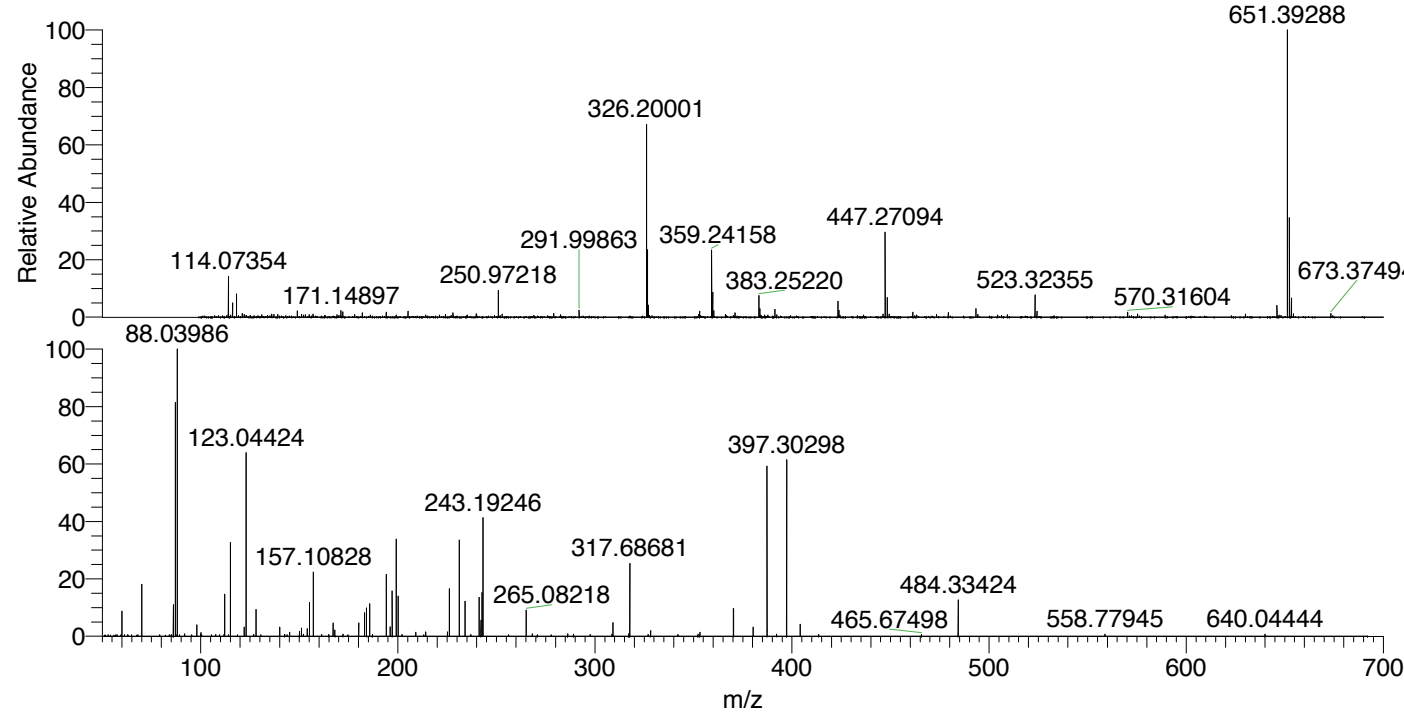
NL: 4.51E6  
 Base Peak m/z= 651.39096-651.39748 F:  
 FTMS + p ESI Full ms [100.00-1500.00]  
 MS Nclavipes

NL: 3.22E6  
 Base Peak m/z= 326.19939-326.20265 F:  
 FTMS + p ESI Full ms [100.00-1500.00]  
 MS Nclavipes

NL: 2.01E5  
 Base Peak m/z= 50.00000-1500.00000 F:  
 FTMS + p ESI d Full ms2  
 326.20@hcd35.00 [50.00-685.00] MS  
 Nclavipes

Nclavipes#2861-2877 RT: 7.18-7.22 AV:  
 F: FTMS + p ESI d Full ms2 326.20 ...  
 m/z= 50.00000-1000.00000

m/z	Intensity	Relative
60.05643	14069.3	8.46
70.02943	9615.9	5.78
70.06585	29354.7	17.65
86.06059	14218.6	8.55
86.09709	18096.1	10.88
87.05582	131841.9	79.28
87.09212	5422.6	3.26
88.03986	166293.2	100.00
98.02417	6393.8	3.84
112.08710	24167.8	14.53
115.05045	53552.7	32.20
122.10051	5223.9	3.14
123.04424	106034.8	63.76
128.10712	14899.0	8.96
140.08181	5215.8	3.14
150.05480	2829.8	1.70
151.03888	4539.2	2.73
154.09749	4138.6	2.49
155.11806	19357.6	11.64
157.10828	36135.3	21.73
157.13329	8757.2	5.27
167.11805	7411.4	4.46
168.06536	3607.2	2.17
180.11342	7665.9	4.61
183.11275	13671.1	8.22
184.14485	15957.3	9.60
185.65052	18099.8	10.88
194.16312	34643.1	20.83
196.15564	5420.2	3.26
197.13977	26243.6	15.78
199.15510	54762.5	32.93
200.13919	22503.9	13.53
209.13885	2307.7	1.39
214.16573	2380.4	1.43
225.12405	2406.8	1.45
226.16673	26635.1	16.02
231.19292	53822.7	32.37
231.21806	41369.5	24.88
234.15819	19714.4	11.86
241.20270	22300.0	13.41
242.15032	9426.5	5.67
242.67124	24511.2	14.74
243.19246	66483.9	39.98
265.08218	14679.3	8.83
309.17459	7881.6	4.74
317.68681	41116.3	24.73
328.23441	3192.0	1.92
328.27031	2331.1	1.40
353.26553	2254.5	1.36
370.29257	16139.3	9.71
380.27654	5188.0	3.12
387.31826	98843.1	59.44
397.30298	99188.1	59.65
404.18102	6651.6	4.00
484.33424	20915.9	12.58



NL: 4.46E6  
 Nclavipes#2863 RT: 7.19  
 AV: 1 T: FTMS + p ESI  
 Full lock ms  
 [100.00-1500.00]

NL: 1.61E5  
 Nclavipes#2857-2881 RT:  
 7.18-7.22 AV: 4 F: FTMS  
 + p ESI d Full ms2  
 326.20@hcd35.00  
 [50.00-685.00]

Nclavipes#2861-2877 RT: 7.18-7.22 AV: 4

F: FTMS + p ESI d Full ms2 326.20@hcd35.00 [50.00-685.00]

m/z= 50.00000-1000.00000

m/z	Intensity	Relative
60.05643	14069.3	8.46
61.31917	875.1	0.53
62.92954	880.8	0.53
70.02943	9615.9	5.78
70.06585	29354.7	17.65
85.07634	868.1	0.52
85.16301	872.7	0.52
86.06059	14218.6	8.55
86.09709	18096.1	10.88
87.05582	131841.9	79.28
87.09212	5422.6	3.26
88.03986	166293.2	100.00
91.75230	1348.4	0.81
91.75742	950.0	0.57
98.02417	6393.8	3.84
100.01271	936.1	0.56
100.08733	2069.4	1.24
107.58720	939.4	0.56
111.77678	910.1	0.55
112.08710	24167.8	14.53
115.05045	53552.7	32.20
115.08639	1983.5	1.19
122.10051	5223.9	3.14
123.04424	106034.8	63.76
126.81746	957.4	0.58
128.10712	14899.0	8.96
140.08181	5215.8	3.14
142.57728	910.1	0.55
143.76588	847.0	0.51
143.83176	856.5	0.52
145.13360	2231.0	1.34
150.05480	2829.8	1.70
151.03888	4539.2	2.73
152.11754	1171.7	0.70
154.09749	4138.6	2.49
154.13369	1620.5	0.97
155.11806	19357.6	11.64
157.10828	36135.3	21.73
157.13329	8757.2	5.27

Nclavipes#2861-2877 RT: 7.18-7.22 AV: 4

F: FTMS + p ESI d Full ms2 326.20@hcd35.00 [50.00-685.00]

m/z= 50.00000-1000.00000

m/z	Intensity	Relative
161.30653	928.5	0.56
164.98958	962.3	0.58
167.11805	7411.4	4.46
168.06536	3607.2	2.17
172.14424	1117.7	0.67
172.19408	976.3	0.59
180.11342	7665.9	4.61
183.11275	13671.1	8.22
184.14485	15957.3	9.60
185.65052	18099.8	10.88
187.09045	984.3	0.59
194.16312	34643.1	20.83
196.15564	5420.2	3.26
197.13977	26243.6	15.78
199.15510	54762.5	32.93
200.13919	22503.9	13.53
202.04967	1045.0	0.63
209.13885	2307.7	1.39
213.15169	895.9	0.54
214.16573	2380.4	1.43
225.12405	2406.8	1.45
226.16673	26635.1	16.02
231.19292	53822.7	32.37
231.21806	41369.5	24.88
234.15819	19714.4	11.86
237.08794	971.8	0.58
241.20270	22300.0	13.41
242.15032	9426.5	5.67
242.67124	24511.2	14.74
243.19246	66483.9	39.98
265.08218	14679.3	8.83
268.17880	1364.7	0.82
270.73943	844.7	0.51
286.17140	1305.9	0.79
289.10473	1167.1	0.70
297.59154	999.8	0.60
308.68280	1198.5	0.72
309.17459	7881.6	4.74
317.19557	1476.4	0.89

Nclavipes#2861-2877 RT: 7.18-7.22 AV: 4

F: FTMS + p ESI d Full ms2 326.20@hcd35.00 [50.00-685.00]

m/z= 50.00000-1000.00000

m/z	Intensity	Relative
317.68681	41116.3	24.73
326.95364	1014.5	0.61
328.23441	3192.0	1.92
328.27031	2331.1	1.40
342.09903	908.9	0.55
352.27933	1223.1	0.74
353.26553	2254.5	1.36
370.29257	16139.3	9.71
380.27654	5188.0	3.12
387.31826	98843.1	59.44
392.17913	1167.6	0.70
397.30298	99188.1	59.65
404.18102	6651.6	4.00
413.50703	948.4	0.57
465.67498	1047.4	0.63
484.33424	20915.9	12.58
558.77945	1155.8	0.70
640.04444	1119.9	0.67