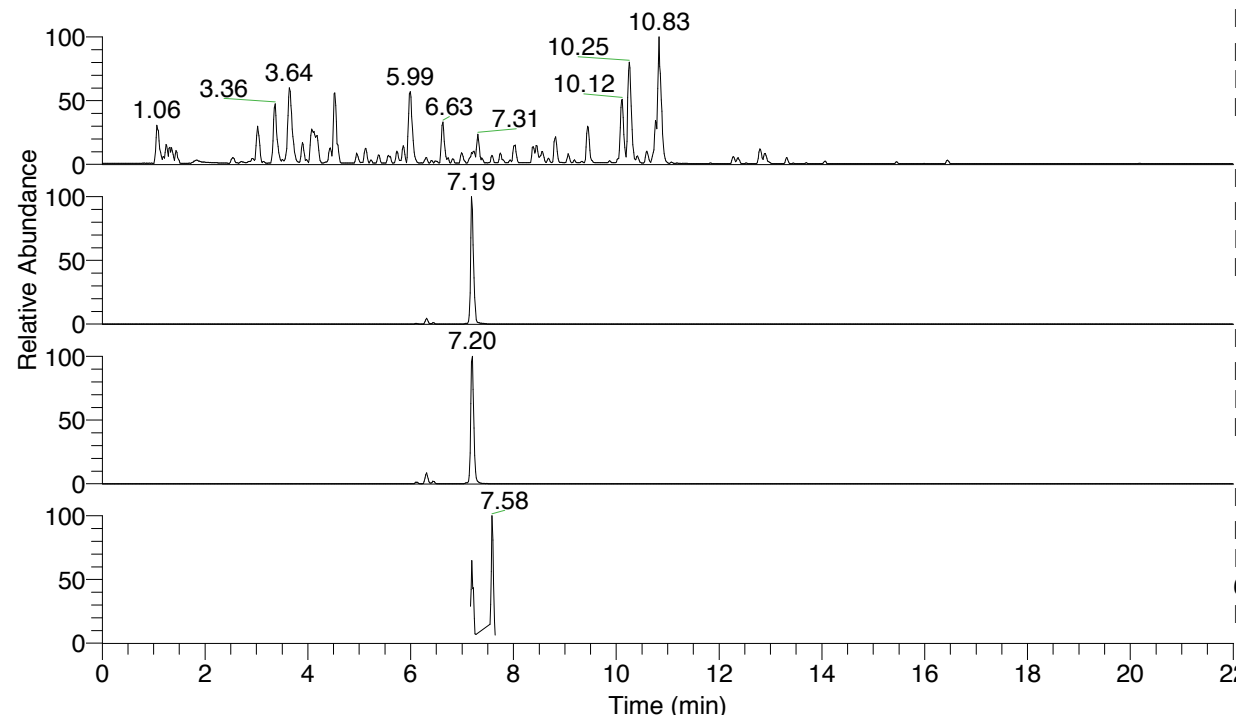


RT: 0.00 - 22.01



NL: 4.79E7
 Base Peak m/z= 100.00000-1500.00000 F:
 FTMS + p ESI Full ms [100.00-1500.00]
 MS Nclavipes

NL: 4.51E6
 Base Peak m/z= 651.39096-651.39748 F:
 FTMS + p ESI Full ms [100.00-1500.00]
 MS Nclavipes

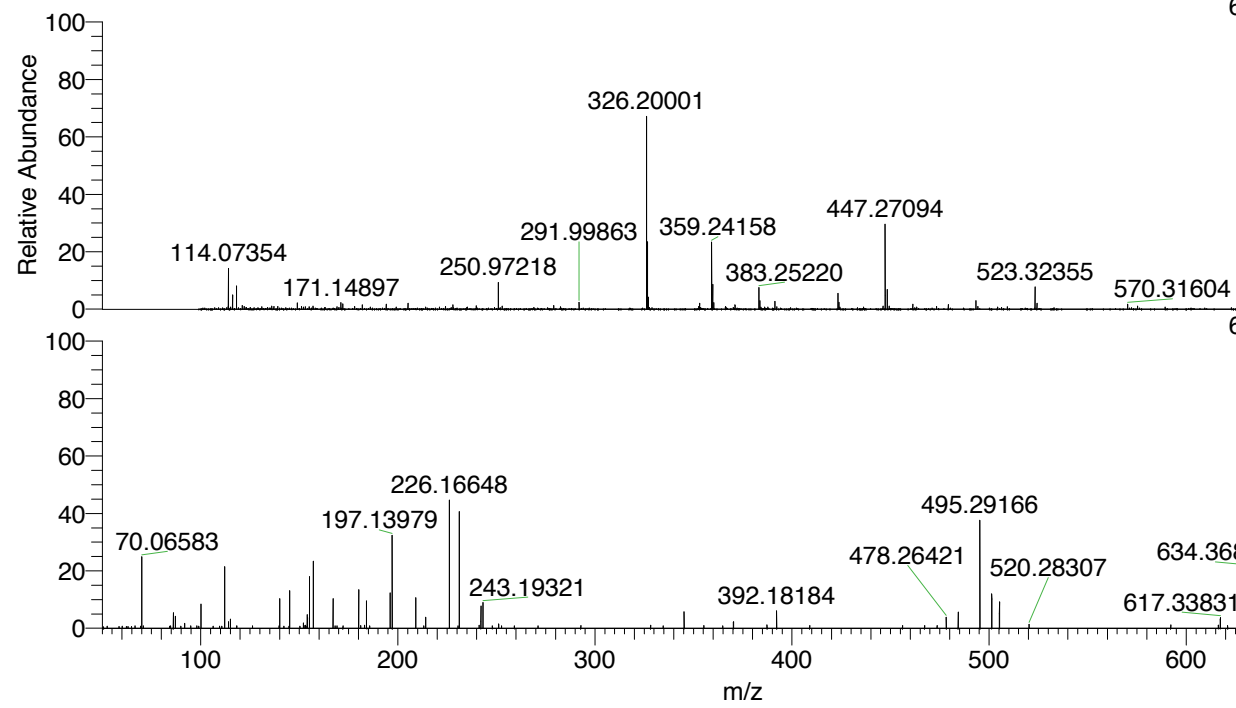
NL: 3.22E6
 Base Peak m/z= 326.19939-326.20265 F:
 FTMS + p ESI Full ms [100.00-1500.00]
 MS Nclavipes

NL: 3.63E5
 Base Peak m/z= 50.00000-1500.00000 F:
 FTMS + p ESI d Full ms2
 651.39@hcd35.00 [50.00-680.00] MS
 Nclavipes

Nclavipes#2860-2876 RT: 7.18-7.22 AV:

F: FTMS + p ESI d Full ms2 651.39 ...
 m/z= 50.00000-1000.00000

m/z	Intensity	Relative
70.06583	42566.3	25.27
86.06064	9385.8	5.57
87.05592	4015.5	2.38
87.09231	7173.1	4.26
91.75839	3016.6	1.79
100.08748	14111.0	8.38
112.08729	37084.1	22.02
114.09133	3979.6	2.36
115.08683	5485.8	3.26
140.08204	18000.3	10.69
145.13369	22059.0	13.10
152.11833	3091.6	1.84
153.10243	1719.8	1.02
154.09745	7927.6	4.71
154.13396	6278.1	3.73
155.11804	30907.1	18.35
157.10815	39580.1	23.50
157.13384	4375.8	2.60
167.11778	17536.2	10.41
180.11320	23090.1	13.71
181.14517	1628.5	0.97
183.16147	1727.4	1.03
184.14502	16007.5	9.50
196.15631	21257.1	12.62
197.13979	56001.1	33.25
209.13996	17858.2	10.60
214.16600	6541.3	3.88
226.16648	75499.0	44.82
231.19293	68629.2	40.74
231.21561	6035.3	3.58
241.20156	1897.6	1.13
242.15006	13568.7	8.06
243.19321	15512.4	9.21
251.14943	2562.6	1.52
292.83377	1614.3	0.96
328.27283	1742.2	1.03
345.26021	9848.7	5.85
355.24371	1652.1	0.98
370.29381	3838.4	2.28
387.32014	1971.8	1.17
392.18184	10274.1	6.10
467.30459	1720.3	1.02
478.26421	6735.2	4.00
484.33643	9591.2	5.69
495.29166	63382.0	37.63
501.36054	20217.4	12.00
505.27782	15663.8	9.30
520.28307	2402.6	1.43
520.28307	1922.3	1.14
592.19560	1911.1	1.13
616.35692	1911.1	1.13
617.33831	6393.3	3.80
634.36804	35918.4	21.32
634.36804	1713.1	1.02
649.02255	1713.1	1.02
651.28757	2728.6	1.62
651.39298	168441.6	100.00



NL: 4.46E6
 Nclavipes#2863 RT: 7.19
 AV: 1 T: FTMS + p ESI
 Full lock ms
 [100.00-1500.00]

NL: 1.68E5
 Nclavipes#2856-2881 RT:
 7.18-7.22 AV: 4 F: FTMS
 + p ESI d Full ms2
 651.39@hcd35.00
 [50.00-680.00]

Nclavipes#2860-2876 RT: 7.18-7.22 AV: 4

F: FTMS + p ESI d Full ms2 651.39@hcd35.00 [50.00-680.00]

m/z= 50.00000-1000.00000

m/z	Intensity	Relative
50.64887	932.2	0.55
52.58357	1144.1	0.68
58.47941	1047.6	0.62
60.16784	1133.0	0.67
62.22722	1084.4	0.64
63.02690	1069.3	0.63
64.82358	1020.4	0.61
66.58318	1482.7	0.88
69.46884	1257.1	0.75
70.06583	42566.3	25.27
70.90792	1352.9	0.80
84.13734	1225.9	0.73
84.67611	1357.0	0.81
86.06064	9385.8	5.57
87.05592	4015.5	2.38
87.09231	7173.1	4.26
89.85349	1143.1	0.68
91.75839	3016.6	1.79
94.96831	1377.4	0.82
98.06108	1407.4	0.84
99.02858	1164.3	0.69
100.08748	14111.0	8.38
106.32461	1287.4	0.76
109.58000	1233.9	0.73
110.66113	1217.4	0.72
112.08729	37084.1	22.02
114.09133	3979.6	2.36
115.08683	5485.8	3.26
118.15326	1295.8	0.77
118.33006	1364.8	0.81
126.28982	1333.1	0.79
139.74587	1508.5	0.90
140.08204	18000.3	10.69
142.11883	1251.2	0.74
144.70903	1326.7	0.79
145.13369	22059.0	13.10
150.29048	1187.4	0.70
152.11833	3091.6	1.84
152.93440	1598.0	0.95

Nclavipes#2860-2876 RT: 7.18-7.22 AV: 4

F: FTMS + p ESI d Full ms2 651.39@hcd35.00 [50.00-680.00]

m/z= 50.00000-1000.00000

m/z	Intensity	Relative
153.10243	1719.8	1.02
153.40746	1332.6	0.79
154.09745	7927.6	4.71
154.13396	6278.1	3.73
155.11804	30907.1	18.35
157.10815	39580.1	23.50
157.13384	4375.8	2.60
167.11778	17536.2	10.41
168.11254	1378.4	0.82
169.10937	1473.7	0.87
172.14541	1503.6	0.89
180.11320	23090.1	13.71
181.14517	1628.5	0.97
183.12419	1335.3	0.79
183.16147	1727.4	1.03
184.14502	16007.5	9.50
185.73781	1435.1	0.85
196.15631	21257.1	12.62
197.13979	56001.1	33.25
209.13996	17858.2	10.60
213.18144	1433.0	0.85
214.16600	6541.3	3.88
226.16648	75499.0	44.82
230.52919	1506.3	0.89
231.19293	68629.2	40.74
231.21561	6035.3	3.58
241.20156	1897.6	1.13
242.15006	13568.7	8.06
243.19321	15512.4	9.21
247.97875	1436.2	0.85
251.14943	2562.6	1.52
252.65574	1478.6	0.88
259.17695	1408.6	0.84
271.17996	1482.5	0.88
292.83377	1614.3	0.96
328.23627	1477.3	0.88
328.27283	1742.2	1.03
334.64216	1453.9	0.86
345.26021	9848.7	5.85

Nclavipes#2860-2876 RT: 7.18-7.22 AV: 4

F: FTMS + p ESI d Full ms2 651.39@hcd35.00 [50.00-680.00]

m/z= 50.00000-1000.00000

m/z	Intensity	Relative
355.24371	1652.1	0.98
364.83704	1492.9	0.89
370.29381	3838.4	2.28
387.32014	1971.8	1.17
392.18184	10274.1	6.10
408.98459	1529.1	0.91
456.08580	1563.3	0.93
467.30459	1720.3	1.02
473.64099	1516.1	0.90
478.26421	6735.2	4.00
484.33643	9591.2	5.69
495.29166	63382.0	37.63
501.36054	20217.4	12.00
505.27782	15663.8	9.30
520.28307	2402.6	1.43
592.19560	1922.3	1.14
616.35692	1911.1	1.13
617.33831	6393.3	3.80
621.03362	1606.5	0.95
627.93578	1567.8	0.93
634.36804	35918.4	21.32
649.02255	1713.1	1.02
651.28757	2728.6	1.62
651.39298	168441.6	100.00