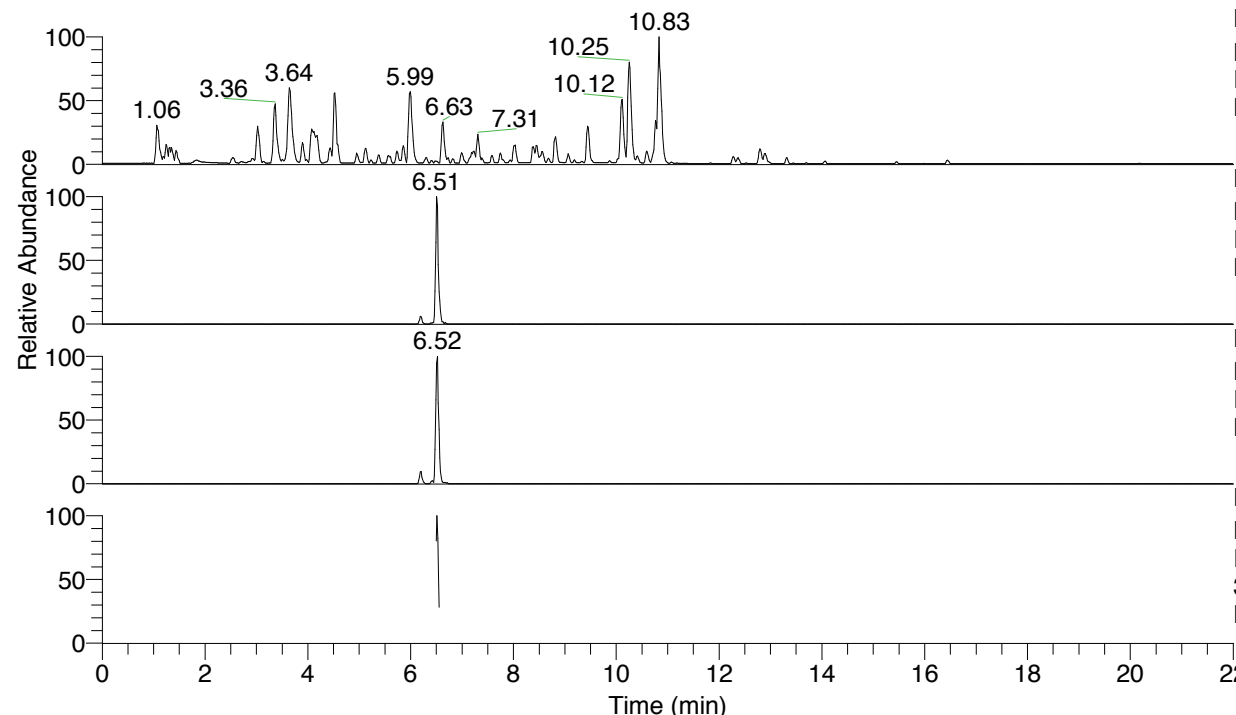


RT: 0.00 - 22.01



NL: 4.79E7
 Base Peak m/z= 100.00000-1500.00000 F:
 FTMS + p ESI Full ms [100.00-1500.00]
 MS Nclavipes

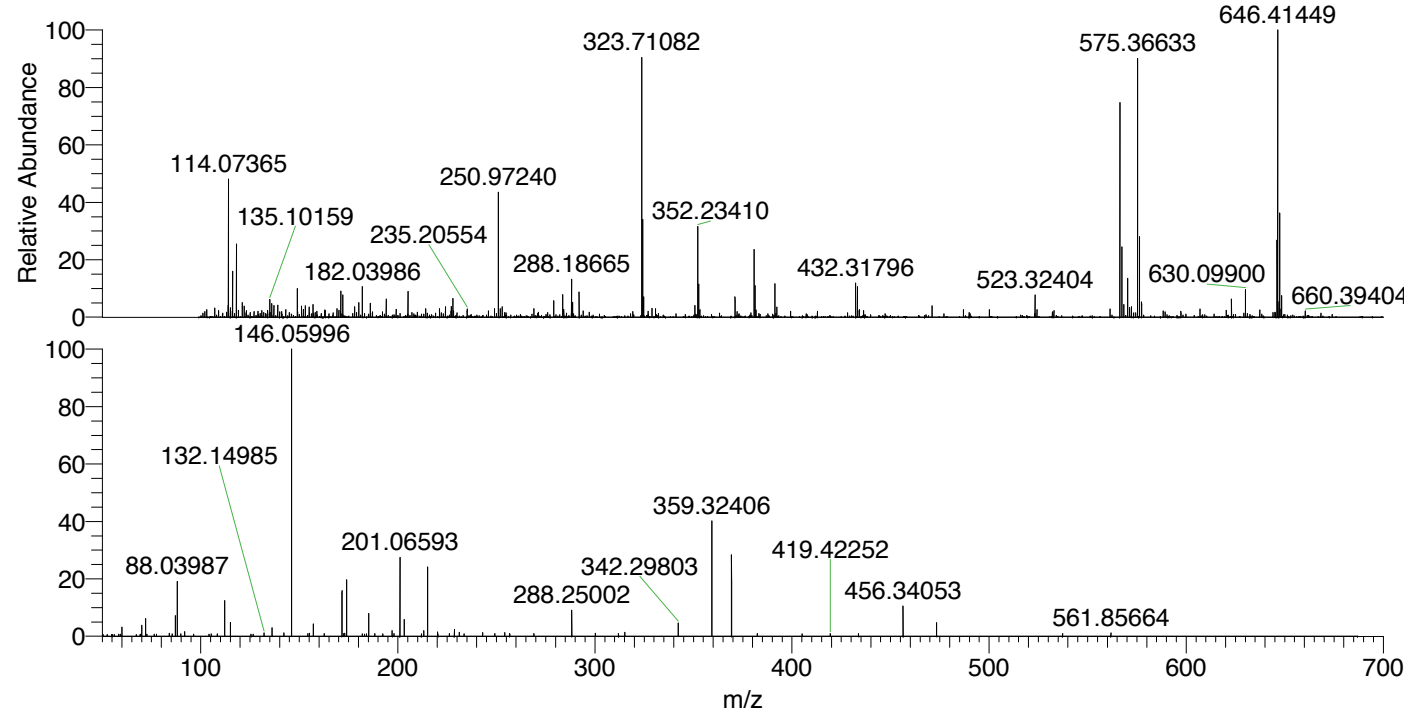
NL: 1.10E6
 Base Peak m/z= 646.41206-646.41852 F:
 FTMS + p ESI Full ms [100.00-1500.00]
 MS Nclavipes

NL: 1.09E6
 Base Peak m/z= 323.70994-323.71318 F:
 FTMS + p ESI Full ms [100.00-1500.00]
 MS Nclavipes

NL: 1.36E5
 Base Peak m/z= 50.00000-1500.00000 F:
 FTMS + p ESI d Full ms2
 323.71@hcd35.00 [50.00-680.00] MS
 Nclavipes

Nclavipes#2590-2606 RT: 6.50-6.54 AV:
 F: FTMS + p ESI d Full ms2 323.71 ...
 m/z= 50.00000-1000.00000

m/z	Intensity	Relative
60.05639	3182.0	3.10
70.06585	3843.4	3.75
72.08152	6225.9	6.07
84.08128	1031.4	1.01
87.05580	7084.5	6.91
88.03987	19444.4	18.96
91.75878	1639.4	1.60
108.33203	884.7	0.86
112.08720	3005.8	2.93
112.11256	12368.0	12.06
115.05061	4911.9	4.79
132.14985	1131.2	1.10
136.11574	2986.4	2.91
142.13336	1176.1	1.15
146.05996	102541.2	100.00
154.31848	966.8	0.94
155.11829	1111.7	1.08
157.10862	4292.7	4.19
162.62111	912.8	0.89
171.65274	16022.5	15.63
172.48619	890.4	0.87
173.07193	1044.3	1.02
174.05496	19506.0	19.02
185.15792	7973.7	7.78
188.30943	891.2	0.87
197.13959	1999.2	1.95
198.05694	938.7	0.92
201.06593	27845.3	27.16
203.22310	5836.7	5.69
213.20749	1985.8	1.94
215.08133	24910.9	24.29
220.16082	1518.7	1.48
226.15779	940.8	0.92
228.67349	2341.4	2.28
231.19384	1418.4	1.38
233.55571	879.9	0.86
243.07664	1321.1	1.29
249.20316	912.7	0.89
254.19697	1264.8	1.23
256.75662	915.3	0.89
268.97696	937.2	0.91
288.25002	9105.9	8.88
300.24010	1119.1	1.09
311.97284	991.9	0.97
315.19822	1374.8	1.34
342.29803	4684.2	4.57
359.32406	40407.2	39.41
369.30851	29159.5	28.44
382.38818	914.2	0.89
419.42252	991.0	0.97
433.75585	901.8	0.88
456.34053	10602.3	10.34
473.36807	4735.9	4.62
537.29526	965.0	0.94
561.85664	1213.9	1.18



NL: 1.10E6
 Nclavipes#2593 RT: 6.51
 AV: 1 T: FTMS + p ESI
 Full lock ms
 [100.00-1500.00]

NL: 9.91E4
 Nclavipes#2587-2611 RT:
 6.50-6.54 AV: 4 F: FTMS
 + p ESI d Full ms2
 323.71@hcd35.00
 [50.00-680.00]

Nclavipes#2590-2606 RT: 6.50-6.54 AV: 4

F: FTMS + p ESI d Full ms2 323.71@hcd35.00 [50.00-680.00]

m/z= 50.00000-1000.00000

m/z	Intensity	Relative
50.42045	651.8	0.64
52.44173	622.0	0.61
54.73847	610.7	0.60
55.03667	633.8	0.62
56.01954	635.7	0.62
58.40912	682.0	0.67
59.20045	699.6	0.68
60.05639	3182.0	3.10
67.26021	653.3	0.64
69.22368	664.9	0.65
69.37050	705.7	0.69
70.06585	3843.4	3.75
72.08152	6225.9	6.07
72.72909	689.5	0.67
76.32997	761.9	0.74
77.58036	738.6	0.72
84.08128	1031.4	1.01
85.51666	801.9	0.78
87.05580	7084.5	6.91
88.03987	19444.4	18.96
89.84513	876.1	0.85
91.75878	1639.4	1.60
96.44525	783.8	0.76
104.20923	792.4	0.77
105.31158	857.2	0.84
108.33203	884.7	0.86
112.08720	3005.8	2.93
112.11256	12368.0	12.06
115.05061	4911.9	4.79
115.12241	835.3	0.81
125.52020	769.4	0.75
126.64563	764.3	0.75
132.14985	1131.2	1.10
136.11574	2986.4	2.91
142.13336	1176.1	1.15
146.05996	102541.2	100.00
154.31848	966.8	0.94
155.11829	1111.7	1.08
157.10862	4292.7	4.19

Nclavipes#2590-2606 RT: 6.50-6.54 AV: 4

F: FTMS + p ESI d Full ms2 323.71@hcd35.00 [50.00-680.00]

m/z= 50.00000-1000.00000

m/z	Intensity	Relative
162.62111	912.8	0.89
171.65274	16022.5	15.63
172.48619	890.4	0.87
173.07193	1044.3	1.02
174.05496	19506.0	19.02
181.92677	794.7	0.77
181.94491	802.2	0.78
183.12451	793.4	0.77
184.04747	816.6	0.80
185.15792	7973.7	7.78
188.30943	891.2	0.87
192.34742	857.0	0.84
197.13959	1999.2	1.95
198.05694	938.7	0.92
201.06593	27845.3	27.16
203.22310	5836.7	5.69
211.94650	801.5	0.78
213.20749	1985.8	1.94
215.08133	24910.9	24.29
220.16082	1518.7	1.48
220.36409	861.0	0.84
226.15779	940.8	0.92
228.67349	2341.4	2.28
231.19384	1418.4	1.38
233.55571	879.9	0.86
243.07664	1321.1	1.29
249.20316	912.7	0.89
254.19697	1264.8	1.23
256.75662	915.3	0.89
268.97696	937.2	0.91
288.25002	9105.9	8.88
300.24010	1119.1	1.09
311.97284	991.9	0.97
315.19822	1374.8	1.34
342.29803	4684.2	4.57
359.32406	40407.2	39.41
369.30851	29159.5	28.44
382.38818	914.2	0.89
405.10914	811.9	0.79

Nclavipes#2590-2606 RT: 6.50-6.54 AV: 4

F: FTMS + p ESI d Full ms2 323.71@hcd35.00 [50.00-680.00]

m/z= 50.00000-1000.00000

m/z	Intensity	Relative
419.42252	991.0	0.97
433.75585	901.8	0.88
456.34053	10602.3	10.34
473.36807	4735.9	4.62
537.29526	965.0	0.94
561.85664	1213.9	1.18