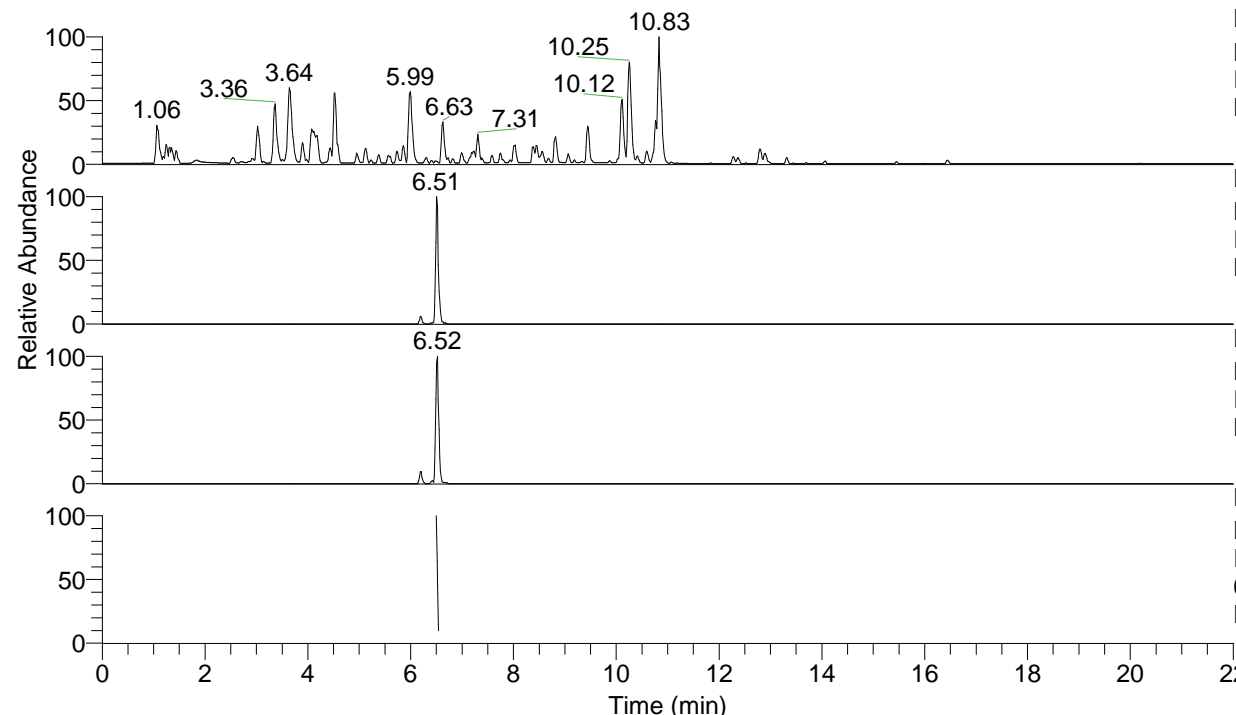


RT: 0.00 - 22.01



NL: 4.79E7  
 Base Peak m/z= 100.00000-1500.00000 F:  
 FTMS + p ESI Full ms [100.00-1500.00]  
 MS Nclavipes

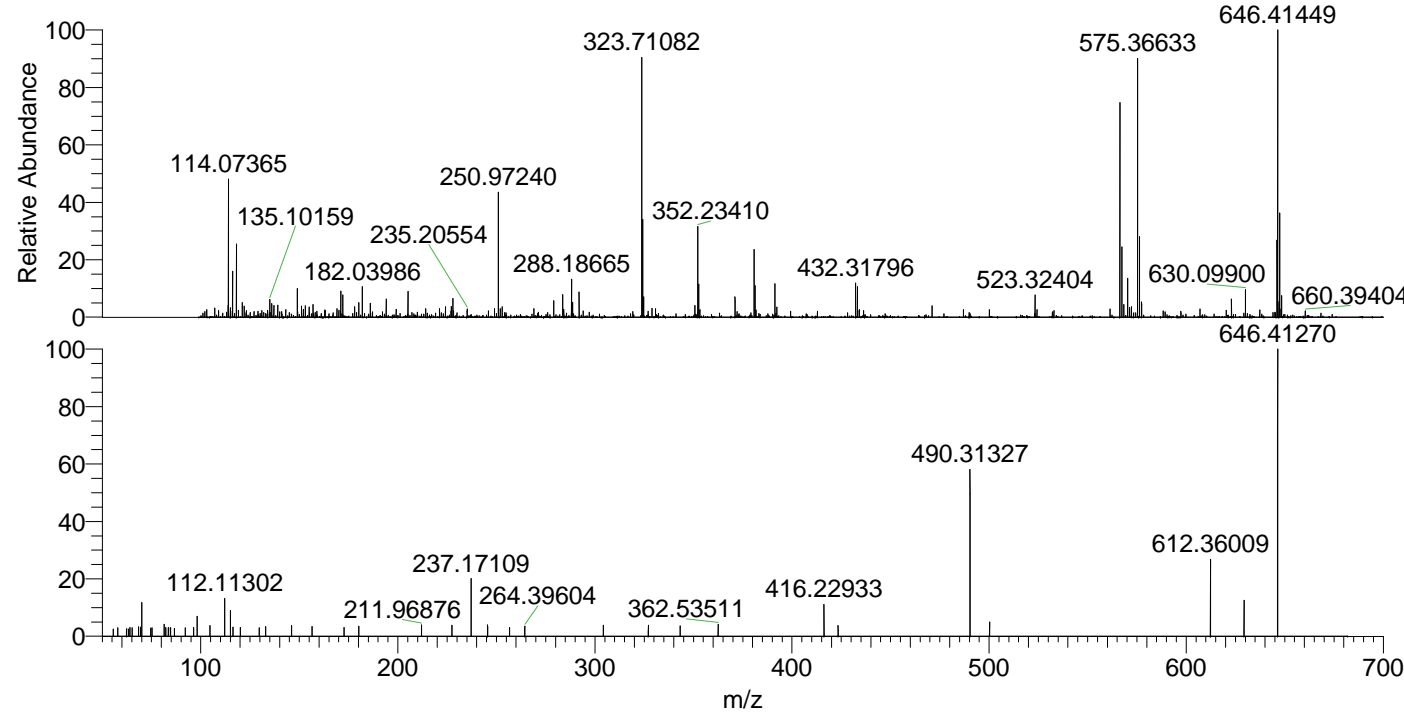
NL: 1.10E6  
 Base Peak m/z= 646.41206-646.41852 F:  
 FTMS + p ESI Full ms [100.00-1500.00]  
 MS Nclavipes

NL: 1.09E6  
 Base Peak m/z= 323.70994-323.71318 F:  
 FTMS + p ESI Full ms [100.00-1500.00]  
 MS Nclavipes

NL: 7.63E4  
 Base Peak m/z= 50.00000-1500.00000 F:  
 FTMS + p ESI d Full ms2  
 646.41@hcd35.00 [50.00-675.00] MS  
 Nclavipes

Nclavipes#2591-2600 RT: 6.50-6.53 AV:  
 F: FTMS + p ESI d Full ms2 646.41 ...  
 m/z= 50.00000-1000.00000

m/z	Intensity	Relative
55.59515	1310.1	2.53
57.95398	1508.3	2.91
62.34457	1349.3	2.60
63.41416	1311.5	2.53
64.09703	1561.5	3.01
65.20495	1520.8	2.93
68.46299	1666.5	3.21
69.40857	1651.5	3.18
69.41313	1459.0	2.81
70.06593	6177.6	11.91
74.64602	1512.5	2.92
75.19060	1523.5	2.94
81.42199	2184.4	4.21
82.21133	1580.0	3.05
83.60263	1516.0	2.92
83.71868	1523.3	2.94
84.60565	1585.0	3.06
86.57594	1423.1	2.74
92.09809	1525.5	2.94
96.37312	1600.3	3.09
98.09723	3604.6	6.95
104.70918	1933.6	3.73
112.08758	3550.0	6.85
112.11302	6907.0	13.32
115.12346	4610.9	8.89
116.31709	1659.8	3.20
120.06803	1581.2	3.05
129.72802	1532.7	2.96
132.93335	1804.0	3.48
146.06102	1919.6	3.70
156.51313	1768.2	3.41
172.66110	1619.5	3.12
180.11445	1831.9	3.53
211.96876	2027.9	3.91
227.50486	1995.1	3.85
237.17109	10486.1	20.22
237.21826	2110.1	4.07
245.54994	2077.8	4.01
256.63099	1600.7	3.09
264.39604	1799.0	3.47
304.26743	2046.0	3.95
327.09482	1977.4	3.81
343.21286	1873.5	3.61
362.53511	2193.3	4.23
416.22933	5737.7	11.06
423.38745	1930.8	3.72
490.31327	30042.0	57.93
500.29471	2546.4	4.91
612.36009	13857.7	26.72
629.38516	6463.2	12.46
646.41270	51859.6	100.00



NL: 1.10E6  
 Nclavipes#2593 RT: 6.51  
 AV: 1 T: FTMS + p ESI  
 Full lock ms  
 [100.00-1500.00]

NL: 5.13E4  
 Nclavipes#2587-2606 RT:  
 6.50-6.53 AV: 3 F: FTMS  
 + p ESI d Full ms2  
 646.41@hcd35.00  
 [50.00-675.00]

m/z	Intensity	Relative
646.41449	100	100
660.39404	10	10
630.09900	15	15
575.36633	75	75
523.32404	15	15
432.31796	15	15
352.23410	35	35
323.71082	90	90
288.18665	15	15
250.97240	45	45
235.20554	25	25
182.03986	15	15
135.10159	35	35
114.07365	55	55