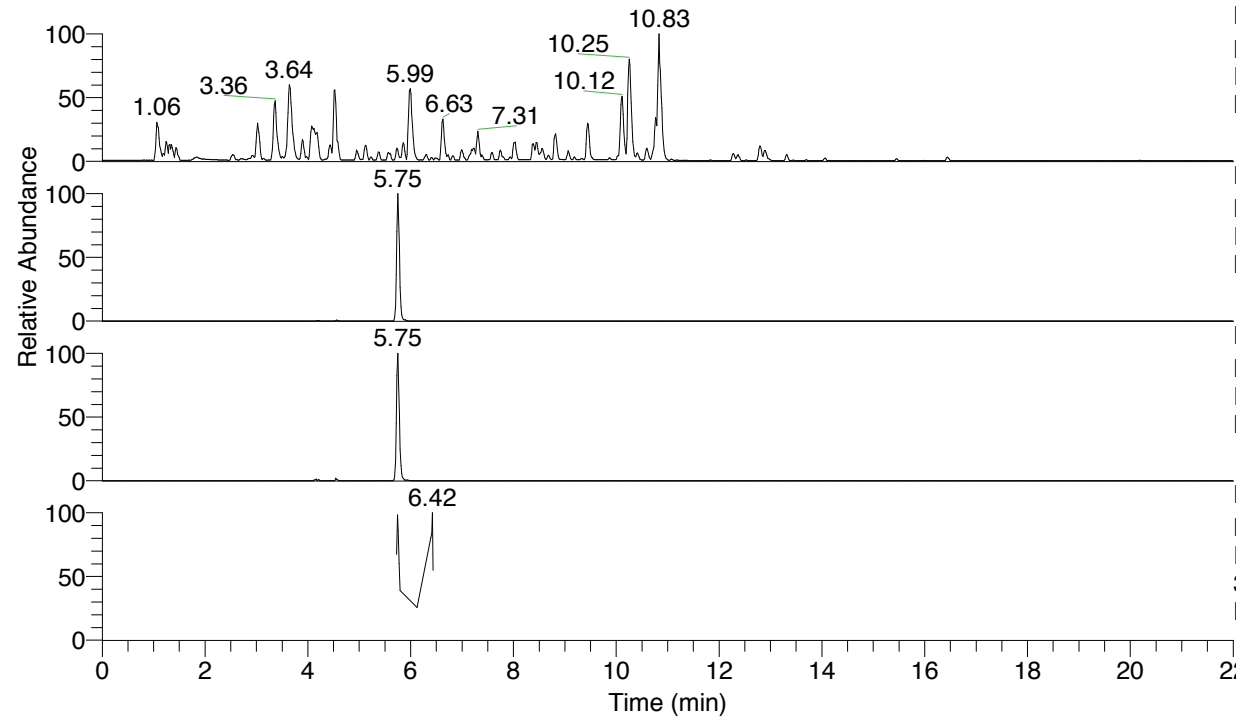


RT: 0.00 - 22.01



NL: 4.79E7
 Base Peak m/z= 100.00000-1500.00000 F:
 FTMS + p ESI Full ms [100.00-1500.00]
 MS Nclavipes

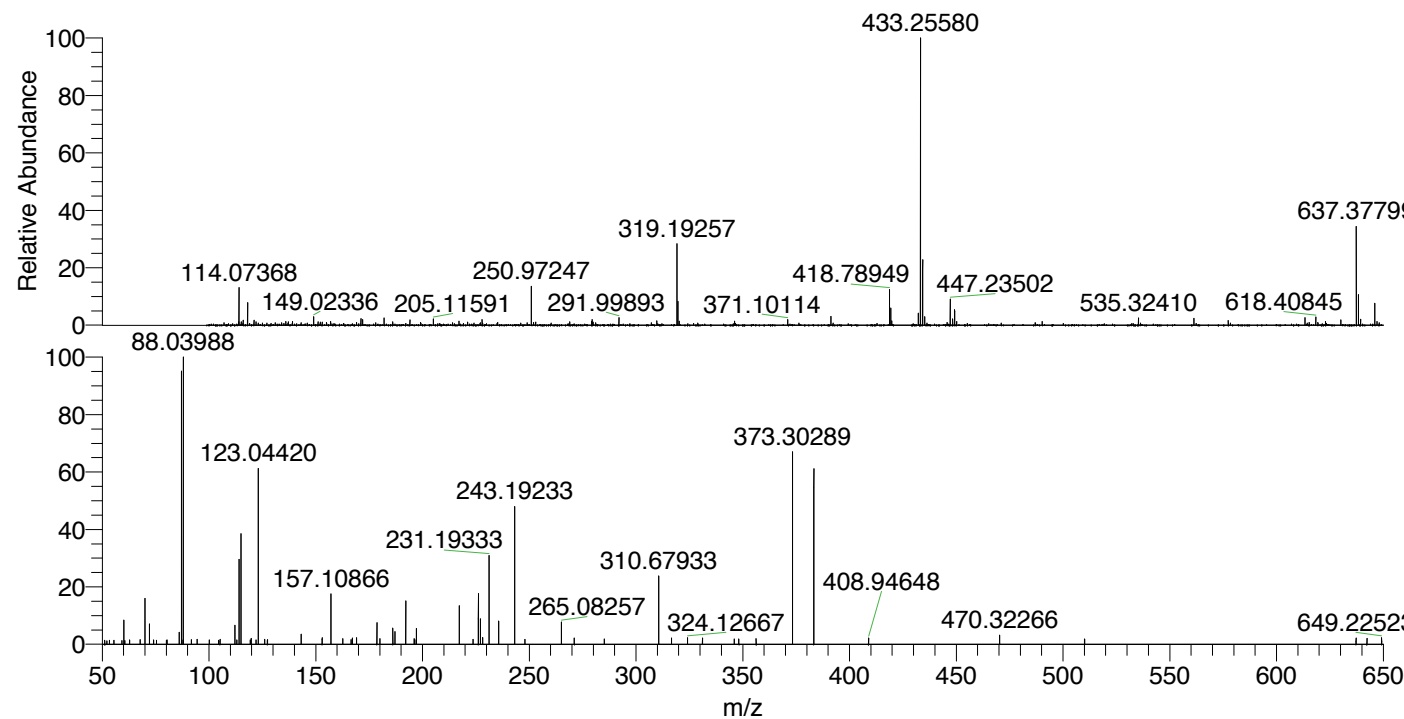
NL: 1.41E6
 Base Peak m/z= 637.37538-637.38176 F:
 FTMS + p ESI Full ms [100.00-1500.00]
 MS Nclavipes

NL: 1.17E6
 Base Peak m/z= 319.19160-319.19480 F:
 FTMS + p ESI Full ms [100.00-1500.00]
 MS Nclavipes

NL: 6.95E4
 Base Peak m/z= 50.00000-1500.00000 F:
 FTMS + p ESI d Full ms2
 319.19@hcd35.00 [50.00-670.00] MS
 Nclavipes

Nclavipes#2284-2566 RT: 5.73-6.44 AV:
 F: FTMS + p ESI d Full ms2 319.19 ...
 m/z= 50.00000-1000.00000

m/z	Intensity	Relative
60.05646	1633.2	5.79
70.06581	3437.6	12.18
72.08150	22805.2	80.83
84.08136	21346.1	75.66
86.06105	1073.6	3.81
87.05587	26064.5	92.38
88.03989	28214.6	100.00
112.08744	1309.4	4.64
114.09171	6333.9	22.45
115.05065	8524.3	30.21
122.09983	580.9	2.06
123.04425	15656.8	55.49
143.11758	700.3	2.48
153.01744	443.7	1.57
155.11874	830.7	2.94
157.10868	3458.1	12.26
167.11855	438.7	1.55
169.09747	465.7	1.65
170.14076	912.6	3.23
178.64292	1879.4	6.66
186.12479	1104.1	3.91
187.15578	872.9	3.09
192.14839	2933.7	10.40
197.14094	1065.9	3.78
198.12329	1246.8	4.42
202.15495	1097.8	3.89
217.20265	2610.4	9.25
226.16668	3421.2	12.13
227.15008	629.3	2.23
227.18683	1714.6	6.08
228.13553	452.5	1.60
231.19334	5986.3	21.22
235.66354	1619.5	5.74
243.19229	9679.9	34.31
256.20216	965.4	3.42
257.54406	408.2	1.45
265.08232	1993.3	7.06
271.11770	420.8	1.49
285.22878	3211.5	11.38
295.21288	2378.1	8.43
310.67934	4623.0	16.39
316.61144	409.5	1.45
324.12668	444.5	1.58
331.14326	427.6	1.52
373.30288	13301.9	47.15
377.34807	425.9	1.51
383.28818	12679.6	44.94
387.83635	420.7	1.49
408.94648	417.4	1.48
470.32264	615.9	2.18
566.33398	469.5	1.66
623.13560	489.2	1.73
637.27462	414.5	1.47
649.22518	443.0	1.57
663.56541	406.9	1.44



NL: 4.11E6
 Nclavipes#2293 RT: 5.75
 AV: 1 T: FTMS + p ESI
 Full lock ms
 [100.00-1500.00]

NL: 4.82E4
 Nclavipes#2284-2304 RT:
 5.73-5.77 AV: 4 F: FTMS
 + p ESI d Full ms2
 319.19@hcd35.00
 [50.00-670.00]

Nclavipes#2284-2566 RT: 5.73-6.44 AV: 10

F: FTMS + p ESI d Full ms2 319.19@hcd35.00 [50.00-670.00]

m/z= 50.00000-1000.00000

m/z	Intensity	Relative
51.05019	238.9	0.85
51.19877	261.1	0.93
52.16085	236.7	0.84
52.29764	268.0	0.95
52.65429	238.4	0.85
53.42418	261.4	0.93
53.83809	239.1	0.85
53.97319	223.0	0.79
54.58815	250.5	0.89
54.60256	303.4	1.08
55.53141	279.4	0.99
55.62127	263.6	0.93
56.09042	257.0	0.91
58.47554	266.9	0.95
58.57791	282.7	1.00
59.27576	257.3	0.91
59.54803	275.1	0.98
60.05646	1633.2	5.79
60.51258	248.8	0.88
61.78451	299.4	1.06
62.77074	302.9	1.07
62.89423	262.0	0.93
63.16575	272.6	0.97
63.28118	267.2	0.95
63.51998	320.0	1.13
63.89481	355.2	1.26
64.25699	294.0	1.04
65.38471	278.1	0.99
66.00445	260.9	0.92
66.98638	280.1	0.99
67.69990	315.6	1.12
70.06581	3437.6	12.18
70.41484	294.1	1.04
72.08150	22805.2	80.83
73.03984	328.0	1.16
73.65346	285.3	1.01
73.99329	287.8	1.02
75.34785	283.7	1.01
75.77605	279.4	0.99

Nclavipes#2284-2566 RT: 5.73-6.44 AV: 10

F: FTMS + p ESI d Full ms2 319.19@hcd35.00 [50.00-670.00]

m/z= 50.00000-1000.00000

m/z	Intensity	Relative
76.45048	280.2	0.99
78.62743	297.2	1.05
80.07034	278.9	0.99
80.35318	294.0	1.04
82.85691	293.9	1.04
82.99848	304.9	1.08
83.88379	264.5	0.94
84.08136	21346.1	75.66
86.06105	1073.6	3.81
87.05587	26064.5	92.38
87.87102	294.6	1.04
88.03989	28214.6	100.00
88.04461	372.1	1.32
88.05735	308.2	1.09
88.94685	328.8	1.17
91.75119	308.1	1.09
94.41745	330.3	1.17
95.66795	311.2	1.10
98.39811	297.1	1.05
100.17231	282.1	1.00
100.32724	399.7	1.42
101.10767	355.1	1.26
104.52384	277.3	0.98
104.78999	299.0	1.06
105.05818	313.8	1.11
105.17369	334.7	1.19
107.47264	323.4	1.15
112.08744	1309.4	4.64
113.02084	307.9	1.09
114.09171	6333.9	22.45
115.05065	8524.3	30.21
119.40063	298.4	1.06
119.59033	291.5	1.03
119.76652	401.1	1.42
122.09983	580.9	2.06
123.04425	15656.8	55.49
126.09200	353.2	1.25
127.36259	313.0	1.11
128.40494	354.2	1.26

Nclavipes#2284-2566 RT: 5.73-6.44 AV: 10

F: FTMS + p ESI d Full ms2 319.19@hcd35.00 [50.00-670.00]

m/z= 50.00000-1000.00000

m/z	Intensity	Relative
130.08883	297.1	1.05
143.11758	700.3	2.48
144.70261	345.8	1.23
147.16425	333.1	1.18
149.62340	328.6	1.16
152.99849	343.5	1.22
153.01744	443.7	1.57
153.10335	301.9	1.07
154.17248	296.8	1.05
155.11874	830.7	2.94
157.10868	3458.1	12.26
162.71862	379.4	1.34
166.61939	313.6	1.11
167.11855	438.7	1.55
169.09747	465.7	1.65
170.14076	912.6	3.23
178.64292	1879.4	6.66
180.11513	376.0	1.33
186.12479	1104.1	3.91
187.15578	872.9	3.09
192.14839	2933.7	10.40
196.15628	393.0	1.39
196.36985	320.2	1.13
197.14094	1065.9	3.78
198.12329	1246.8	4.42
202.15495	1097.8	3.89
203.57093	306.6	1.09
204.60572	353.6	1.25
215.14755	401.6	1.42
217.20265	2610.4	9.25
218.71131	334.9	1.19
223.65041	351.1	1.24
226.16668	3421.2	12.13
227.15008	629.3	2.23
227.18683	1714.6	6.08
228.13553	452.5	1.60
229.45327	339.0	1.20
231.19334	5986.3	21.22
235.66354	1619.5	5.74

Nclavipes#2284-2566 RT: 5.73-6.44 AV: 10

F: FTMS + p ESI d Full ms2 319.19@hcd35.00 [50.00-670.00]

m/z= 50.00000-1000.00000

m/z	Intensity	Relative
243.19229	9679.9	34.31
247.93912	345.0	1.22
249.14232	367.1	1.30
250.04906	347.1	1.23
256.20216	965.4	3.42
257.54406	408.2	1.45
265.08232	1993.3	7.06
271.11770	420.8	1.49
272.12562	388.4	1.38
285.20314	369.6	1.31
285.22878	3211.5	11.38
295.21288	2378.1	8.43
310.67934	4623.0	16.39
316.61144	409.5	1.45
324.12668	444.5	1.58
331.14326	427.6	1.52
346.04004	357.1	1.27
346.68857	322.3	1.14
348.17477	361.3	1.28
352.42780	395.3	1.40
356.27699	379.8	1.35
366.08103	369.8	1.31
366.12863	347.4	1.23
368.60674	391.9	1.39
373.30288	13301.9	47.15
377.34807	425.9	1.51
383.28818	12679.6	44.94
385.87376	353.9	1.25
387.83635	420.7	1.49
408.94648	417.4	1.48
412.33606	355.6	1.26
413.65804	356.0	1.26
451.89002	353.1	1.25
470.32264	615.9	2.18
472.46267	380.7	1.35
488.72070	354.2	1.26
510.11101	352.3	1.25
515.91866	368.5	1.31
519.26137	391.6	1.39

Nclavipes#2284-2566 RT: 5.73-6.44 AV: 10

F: FTMS + p ESI d Full ms2 319.19@hcd35.00 [50.00-670.00]

m/z= 50.00000-1000.00000

m/z	Intensity	Relative
532.76326	395.3	1.40
566.33398	469.5	1.66
623.13560	489.2	1.73
637.27462	414.5	1.47
642.40275	401.5	1.42
649.22518	443.0	1.57
663.56541	406.9	1.44