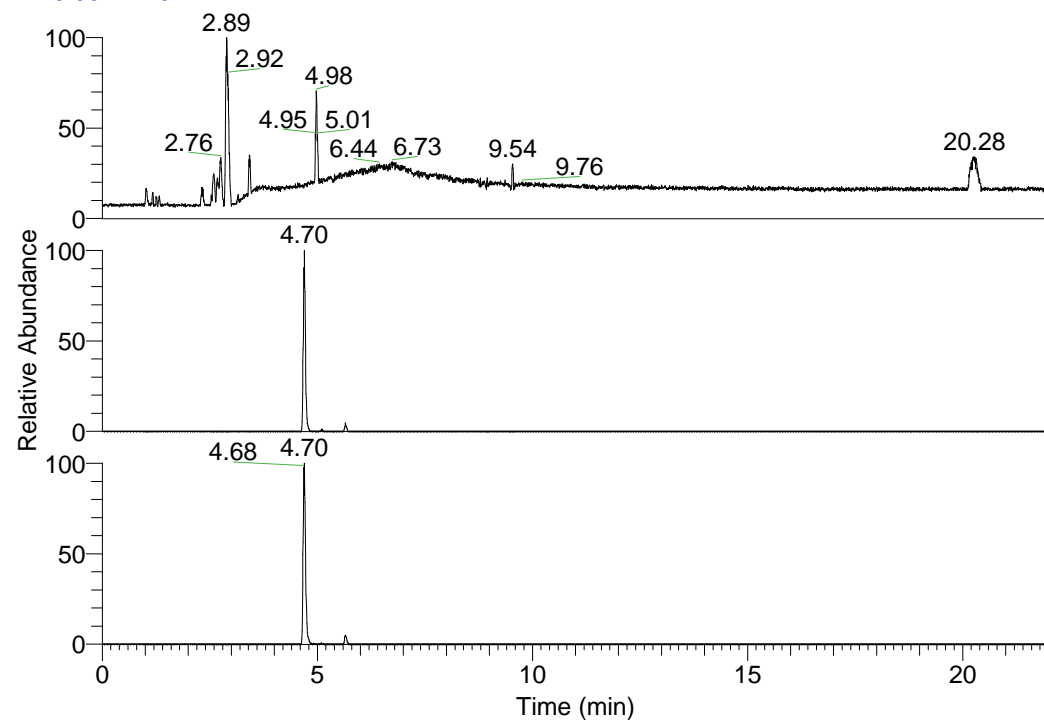


RT: 0.00 - 22.01



NL: 1.01E8
 Base Peak m/z=
 100.00000-1500.00000 F:
 FTMS + p ESI Full ms
 [100.00-1500.00] MS
 Nclavipes_HDX

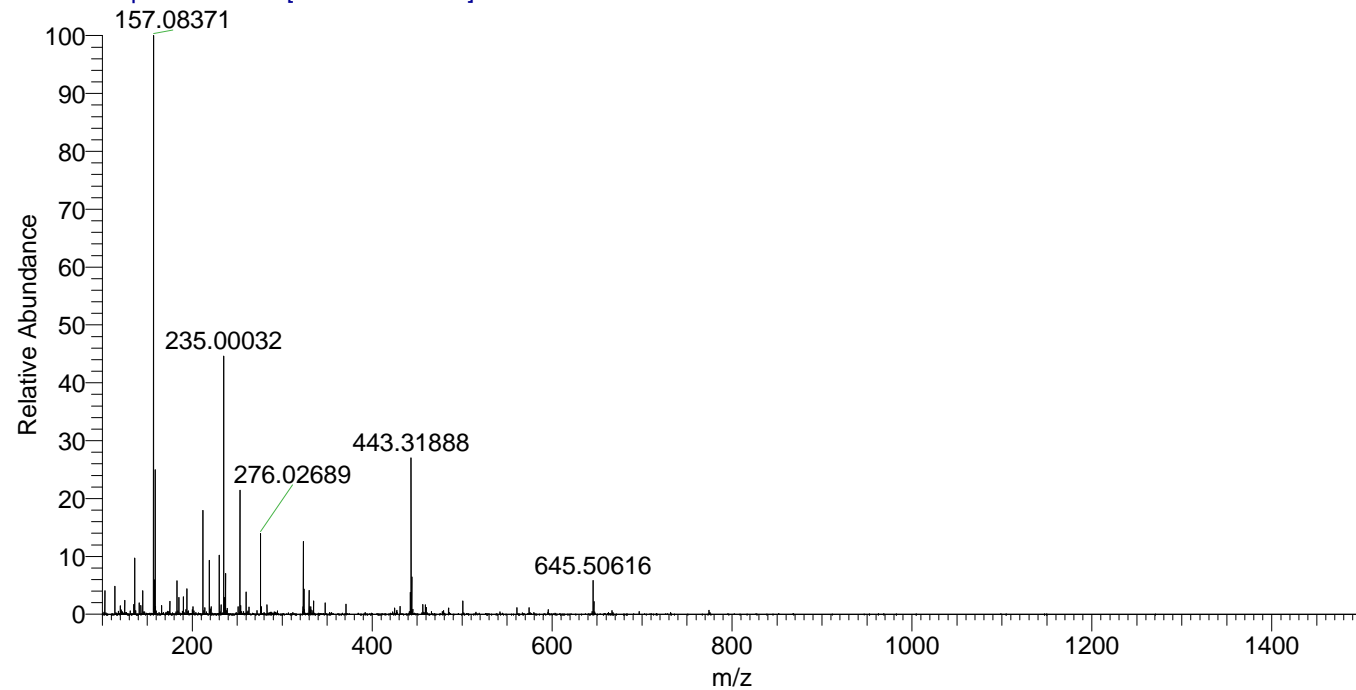
NL: 1.18E6
 Base Peak m/z=
 645.50316-645.50962 F:
 FTMS + p ESI Full ms
 [100.00-1500.00] MS
 Nclavipes_HDX

NL: 2.46E6
 Base Peak m/z=
 323.75863-323.76187 F:
 FTMS + p ESI Full ms
 [100.00-1500.00] MS
 Nclavipes_HDX

Nclavipes_HDX#738 RT: 4.70
 T: FTMS + p ESI Full ms [100.00-1500.00]
 m/z= 645.00000-646.00000

| m/z | Intensity | Relative | Delta (ppm) | Composition |
|-----------|-----------|----------|-------------|--|
| 645.50616 | 1176465.9 | 100.00 | 0.50 | C ₃₁ H ₄₁ ² H ₁₃ O ₅ N ₉ |
| | | | -1.90 | C ₃₁ H ₄₃ ² H ₁₂ O ₅ N ₉ |
| | | | 2.90 | C ₃₁ H ₃₉ ² H ₁₄ O ₅ N ₉ |
| | | | -4.29 | C ₃₁ H ₄₅ ² H ₁₁ O ₅ N ₉ |

Nclavipes_HDX #738 RT: 4.70 AV: 1 NL: 1.96E7
 T: FTMS + p ESI Full ms [100.00-1500.00]



Nclavipes_HDX #738 RT: 4.70 AV: 1 NL: 1.14E6
 T: FTMS + p ESI Full ms [100.00-1500.00]

