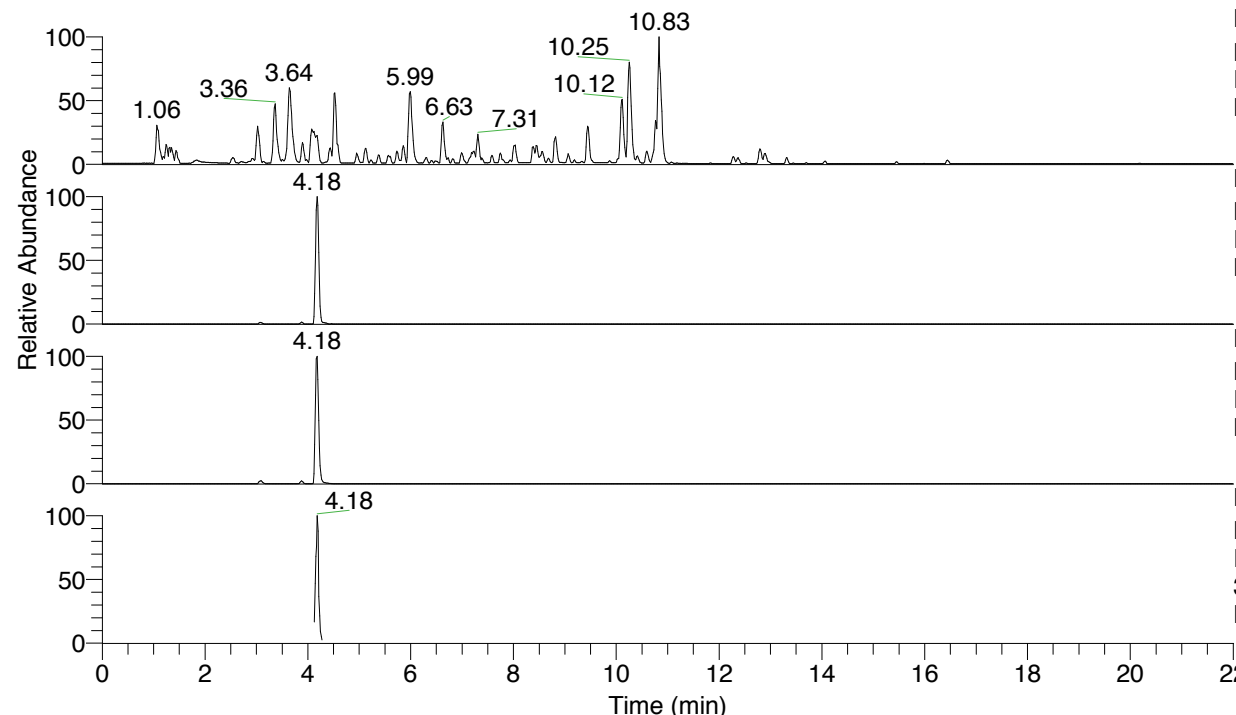


RT: 0.00 - 22.01



NL: 4.79E7  
 Base Peak m/z= 100.00000-1500.00000 F:  
 FTMS + p ESI Full ms [100.00-1500.00]  
 MS Nclavipes

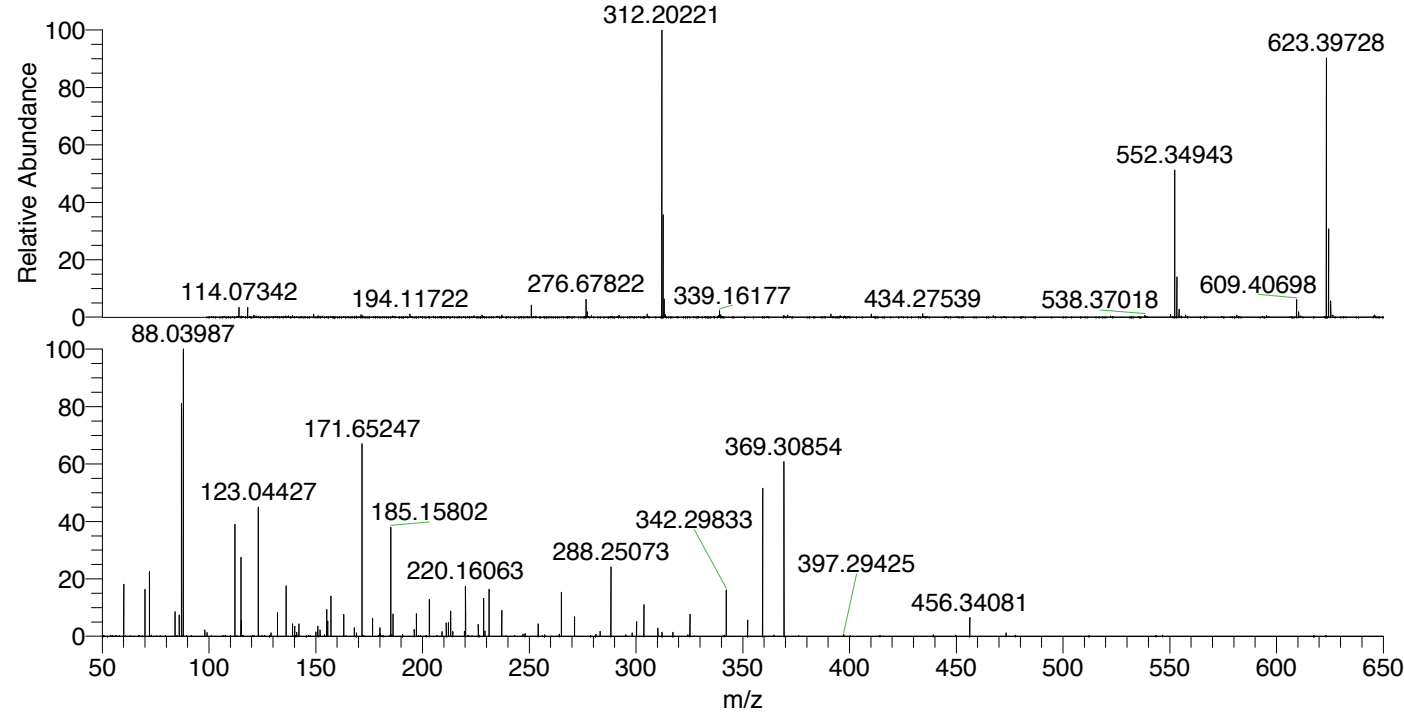
NL: 9.41E6  
 Base Peak m/z= 623.39618-623.40242 F:  
 FTMS + p ESI Full ms [100.00-1500.00]  
 MS Nclavipes

NL: 1.08E7  
 Base Peak m/z= 312.20200-312.20512 F:  
 FTMS + p ESI Full ms [100.00-1500.00]  
 MS Nclavipes

NL: 6.34E5  
 Base Peak m/z= 50.00000-1500.00000 F:  
 FTMS + p ESI d Full ms2  
 312.20@hcd35.00 [50.00-655.00] MS  
 Nclavipes

Nclavipes#1654-1682 RT: 4.14-4.21 AV:  
 F: FTMS + p ESI d Full ms2 312.20 ...  
 m/z= 50.00000-1000.00000

m/z	Intensity	Relative
60.05644	76953.6	18.25
70.02947	21123.6	5.01
70.06589	69938.8	16.58
72.08149	95204.3	22.58
84.08138	36693.9	8.70
86.06067	31122.5	7.38
87.05588	347879.1	82.49
88.03987	421710.7	100.00
112.08728	34317.6	8.14
112.11240	166649.8	39.52
115.05053	116146.0	27.54
115.12341	23250.7	5.51
123.04427	189691.3	44.98
132.14955	35850.9	8.50
136.11581	75194.0	17.83
139.12317	18282.9	4.34
140.11843	14790.4	3.51
142.12813	18221.9	4.32
151.03922	15204.1	3.61
152.07089	9679.4	2.30
155.11808	39300.5	9.32
155.63408	22253.7	5.28
157.10857	59751.6	14.17
163.13944	32176.4	7.63
168.06564	12383.5	2.94
171.65247	283075.7	67.13
176.64512	27341.7	6.48
180.11315	12513.7	2.97
185.15802	160671.0	38.10
186.19705	33154.7	7.86
196.15626	9896.7	2.35
197.13996	33276.7	7.89
203.22323	55906.3	13.26
211.15596	19450.1	4.61
212.17604	20068.0	4.76
213.20746	37615.7	8.92
220.16063	73587.4	17.45
226.15542	17280.8	4.10
228.67413	55520.6	13.17
231.19286	71503.3	16.96
237.18842	37975.4	9.01
254.19775	18451.7	4.38
265.08216	66439.8	15.75
271.22439	28724.9	6.81
288.25073	105253.3	24.96
300.24101	9066.0	2.15
300.27588	22075.4	5.23
303.69006	46486.3	11.02
310.25978	12055.1	2.86
325.27110	32912.5	7.80
342.29833	68071.3	16.14
352.28184	23907.2	5.67
359.32374	220452.4	52.28
369.30854	256548.8	60.84
456.34081	27966.3	6.63



NL: 1.02E7  
 Nclavipes#1669 RT: 4.18  
 AV: 1 T: FTMS + p ESI  
 Full lock ms  
 [100.00-1500.00]

NL: 4.21E5  
 Nclavipes#1652-1684 RT:  
 4.14-4.21 AV: 6 F: FTMS  
 + p ESI d Full ms2  
 312.20@hcd35.00  
 [50.00-655.00]

Nclavipes#1654-1682 RT: 4.14-4.21 AV: 6

F: FTMS + p ESI d Full ms2 312.20@hcd35.00 [50.00-655.00]

m/z= 50.00000-1000.00000

m/z	Intensity	Relative
60.05644	76953.6	18.25
70.02947	21123.6	5.01
70.06589	69938.8	16.58
72.08149	95204.3	22.58
84.08138	36693.9	8.70
86.06067	31122.5	7.38
87.05588	347879.1	82.49
88.03987	421710.7	100.00
98.02427	9002.6	2.13
98.09707	6838.4	1.62
99.09224	5270.5	1.25
112.08728	34317.6	8.14
112.11240	166649.8	39.52
112.11967	2743.8	0.65
115.05053	116146.0	27.54
115.08701	6062.2	1.44
115.12341	23250.7	5.51
123.04427	189691.3	44.98
129.13908	4948.7	1.17
132.14955	35850.9	8.50
136.11581	75194.0	17.83
139.12317	18282.9	4.34
140.08186	5484.2	1.30
140.11843	14790.4	3.51
141.10214	5911.4	1.40
142.12813	18221.9	4.32
142.13441	6669.7	1.58
150.05524	6499.1	1.54
151.03922	15204.1	3.61
152.07089	9679.4	2.30
154.13383	2610.9	0.62
155.11808	39300.5	9.32
155.63408	22253.7	5.28
157.10857	59751.6	14.17
157.14488	8805.8	2.09
163.13944	32176.4	7.63
168.06564	12383.5	2.94
169.09712	5182.2	1.23
171.65247	283075.7	67.13

Nclavipes#1654-1682 RT: 4.14-4.21 AV: 6

F: FTMS + p ESI d Full ms2 312.20@hcd35.00 [50.00-655.00]

m/z= 50.00000-1000.00000

m/z	Intensity	Relative
176.64512	27341.7	6.48
180.11315	12513.7	2.97
180.16588	4688.2	1.11
185.15802	160671.0	38.10
186.19705	33154.7	7.86
190.63694	2640.9	0.63
196.15626	9896.7	2.35
197.13996	33276.7	7.89
203.22323	55906.3	13.26
209.12856	7200.6	1.71
211.15596	19450.1	4.61
212.17604	20068.0	4.76
213.18650	3069.6	0.73
213.20746	37615.7	8.92
214.16651	6853.9	1.63
219.66938	7445.7	1.77
220.06139	3446.2	0.82
220.16063	73587.4	17.45
226.15542	17280.8	4.10
228.67413	55520.6	13.17
229.20264	7951.9	1.89
231.19286	71503.3	16.96
237.08733	3826.5	0.91
237.18842	37975.4	9.01
247.07059	2984.5	0.71
248.05588	3941.5	0.93
254.19775	18451.7	4.38
257.20865	2301.9	0.55
264.09806	3302.3	0.78
265.08216	66439.8	15.75
271.22439	28724.9	6.81
281.20768	2508.0	0.59
283.24933	7345.8	1.74
288.25073	105253.3	24.96
298.23549	5162.9	1.22
300.24101	9066.0	2.15
300.27588	22075.4	5.23
303.69006	46486.3	11.02
310.25978	12055.1	2.86

Nclavipes#1654-1682 RT: 4.14-4.21 AV: 6

F: FTMS + p ESI d Full ms2 312.20@hcd35.00 [50.00-655.00]

m/z= 50.00000-1000.00000

m/z	Intensity	Relative
312.20333	5742.3	1.36
317.30287	5737.8	1.36
324.28671	2157.7	0.51
325.27110	32912.5	7.80
342.29833	68071.3	16.14
352.28184	23907.2	5.67
359.32374	220452.4	52.28
369.30854	256548.8	60.84
397.29425	2754.9	0.65
456.34081	27966.3	6.63
473.36719	5169.7	1.23