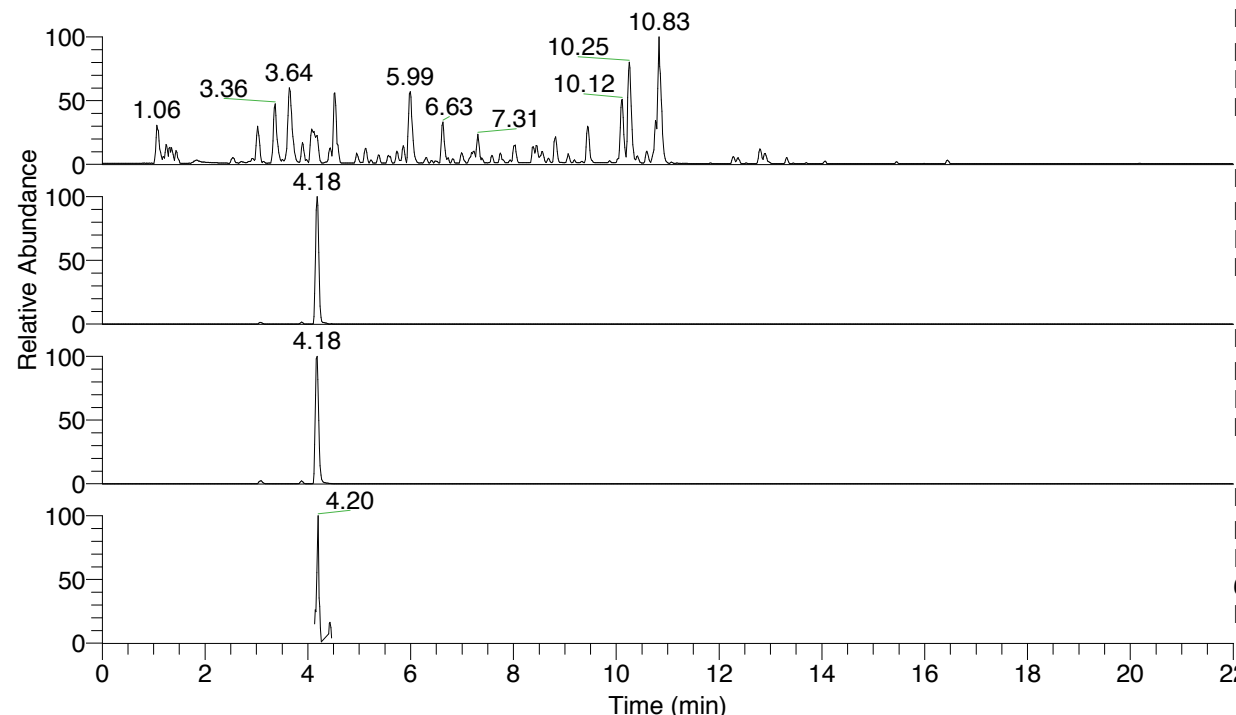


RT: 0.00 - 22.01



NL: 4.79E7
 Base Peak m/z= 100.00000-1500.00000 F:
 FTMS + p ESI Full ms [100.00-1500.00]
 MS Nclavipes

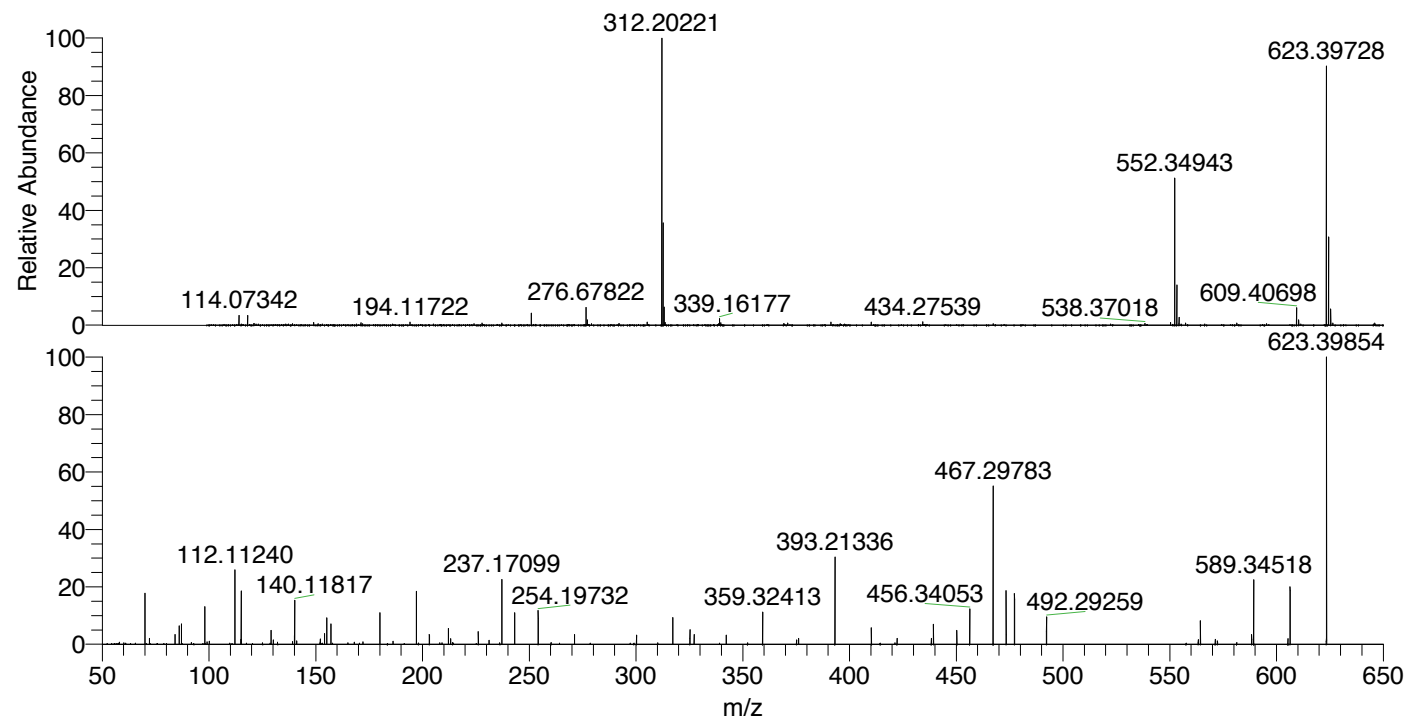
NL: 9.41E6
 Base Peak m/z= 623.39618-623.40242 F:
 FTMS + p ESI Full ms [100.00-1500.00]
 MS Nclavipes

NL: 1.08E7
 Base Peak m/z= 312.20200-312.20512 F:
 FTMS + p ESI Full ms [100.00-1500.00]
 MS Nclavipes

NL: 6.58E5
 Base Peak m/z= 50.00000-1500.00000 F:
 FTMS + p ESI d Full ms2
 623.40@hcd35.00 [50.00-655.00] MS
 Nclavipes

Nclavipes#1666-1683 RT: 4.17-4.22 AV:
 F: FTMS + p ESI d Full ms2 623.40 ...
 m/z= 50.00000-1000.00000

m/z	Intensity	Relative
70.06586	75616.7	17.58
72.08149	8647.2	2.01
84.08157	14641.2	3.40
86.06062	27745.1	6.45
87.05597	30891.5	7.18
98.09687	56321.1	13.10
112.08721	63211.3	14.70
112.11240	109203.8	25.40
115.05052	7130.2	1.66
115.12337	78043.5	18.15
129.13899	20517.3	4.77
130.12287	6761.1	1.57
140.08198	13269.1	3.09
140.11817	66485.4	15.46
152.11868	7888.9	1.83
154.13380	15750.8	3.66
155.11776	40236.3	9.36
157.10848	30483.3	7.09
180.11285	48241.7	11.22
197.13980	79914.9	18.58
203.22364	14506.3	3.37
212.17567	23687.0	5.51
213.20742	8431.4	1.96
226.15551	19020.8	4.42
237.17099	96200.3	22.37
243.18130	46436.4	10.80
254.19732	49572.9	11.53
271.22417	14207.3	3.30
300.24018	13327.4	3.10
317.26639	40358.7	9.39
325.27164	21248.9	4.94
327.25074	14462.2	3.36
342.26099	10373.7	2.41
342.29783	13634.8	3.17
359.32413	47429.2	11.03
376.18647	8658.5	2.01
393.21336	130629.0	30.38
410.23948	24509.6	5.70
422.28793	8728.3	2.03
438.33185	8514.4	1.98
439.31477	29686.6	6.90
450.27146	20286.4	4.72
456.34053	51804.3	12.05
467.29783	233263.6	54.24
473.36661	78520.7	18.26
477.28104	75162.1	17.48
492.29259	40210.2	9.35
563.36604	7043.3	1.64
564.34826	34488.5	8.02
571.33475	7214.7	1.68
588.36290	14539.0	3.38
589.34518	97627.7	22.70
605.39121	8177.6	1.90
606.37119	86216.9	20.05
623.39854	430019.9	100.00



NL: 1.02E7
 Nclavipes#1669 RT: 4.18
 AV: 1 T: FTMS + p ESI
 Full lock ms
 [100.00-1500.00]

NL: 4.21E5
 Nclavipes#1663-1684 RT:
 4.17-4.22 AV: 4 F: FTMS
 + p ESI d Full ms2
 623.40@hcd35.00
 [50.00-655.00]

Nclavipes#1666-1683 RT: 4.17-4.22 AV: 4

F: FTMS + p ESI d Full ms2 623.40@hcd35.00 [50.00-655.00]

m/z= 50.00000-1000.00000

m/z	Intensity	Relative
58.06600	3245.5	0.75
70.06586	75616.7	17.58
72.08149	8647.2	2.01
84.08157	14641.2	3.40
86.06062	27745.1	6.45
87.05597	30891.5	7.18
91.75266	3012.4	0.70
98.09687	56321.1	13.10
99.09224	3660.9	0.85
100.08765	4432.8	1.03
112.08721	63211.3	14.70
112.11240	109203.8	25.40
115.05052	7130.2	1.66
115.08681	5088.6	1.18
115.12337	78043.5	18.15
129.13899	20517.3	4.77
130.12287	6761.1	1.57
132.15022	3335.4	0.78
139.12359	3889.2	0.90
140.08198	13269.1	3.09
140.11817	66485.4	15.46
141.10244	4861.6	1.13
152.07060	2208.2	0.51
152.11868	7888.9	1.83
154.13380	15750.8	3.66
155.11776	40236.3	9.36
157.10848	30483.3	7.09
157.14476	3354.1	0.78
168.11378	3164.0	0.74
172.14448	3380.3	0.79
180.11285	48241.7	11.22
186.19653	4320.6	1.00
197.13980	79914.9	18.58
203.22364	14506.3	3.37
209.12902	2352.0	0.55
212.17567	23687.0	5.51
213.20742	8431.4	1.96
214.16651	2557.0	0.59
226.15551	19020.8	4.42

Nclavipes#1666-1683 RT: 4.17-4.22 AV: 4

F: FTMS + p ESI d Full ms2 623.40@hcd35.00 [50.00-655.00]

m/z= 50.00000-1000.00000

m/z	Intensity	Relative
231.19282	5819.9	1.35
237.17099	96200.3	22.37
243.18130	46436.4	10.80
254.19732	49572.9	11.53
260.20887	2682.5	0.62
271.22417	14207.3	3.30
300.24018	13327.4	3.10
300.27410	4462.0	1.04
310.22160	2172.3	0.51
317.26639	40358.7	9.39
325.23571	2744.9	0.64
325.27164	21248.9	4.94
327.25074	14462.2	3.36
342.26099	10373.7	2.41
342.29783	13634.8	3.17
352.28138	2228.6	0.52
359.32413	47429.2	11.03
375.20260	6586.2	1.53
376.18647	8658.5	2.01
393.21336	130629.0	30.38
410.23948	24509.6	5.70
422.28793	8728.3	2.03
438.33185	8514.4	1.98
439.31477	29686.6	6.90
450.27146	20286.4	4.72
456.34053	51804.3	12.05
467.29783	233263.6	54.24
473.36661	78520.7	18.26
477.28104	75162.1	17.48
492.29259	40210.2	9.35
563.36604	7043.3	1.64
564.34826	34488.5	8.02
571.33475	7214.7	1.68
572.32178	5155.2	1.20
581.37684	2776.6	0.65
588.36290	14539.0	3.38
589.34518	97627.7	22.70
605.39121	8177.6	1.90
606.37119	86216.9	20.05

Nclavipes#1666-1683 RT: 4.17-4.22 AV: 4

F: FTMS + p ESI d Full ms2 623.40@hcd35.00 [50.00-655.00]

m/z= 50.00000-1000.00000

m/z	Intensity	Relative
623.39854	430019.9	100.00