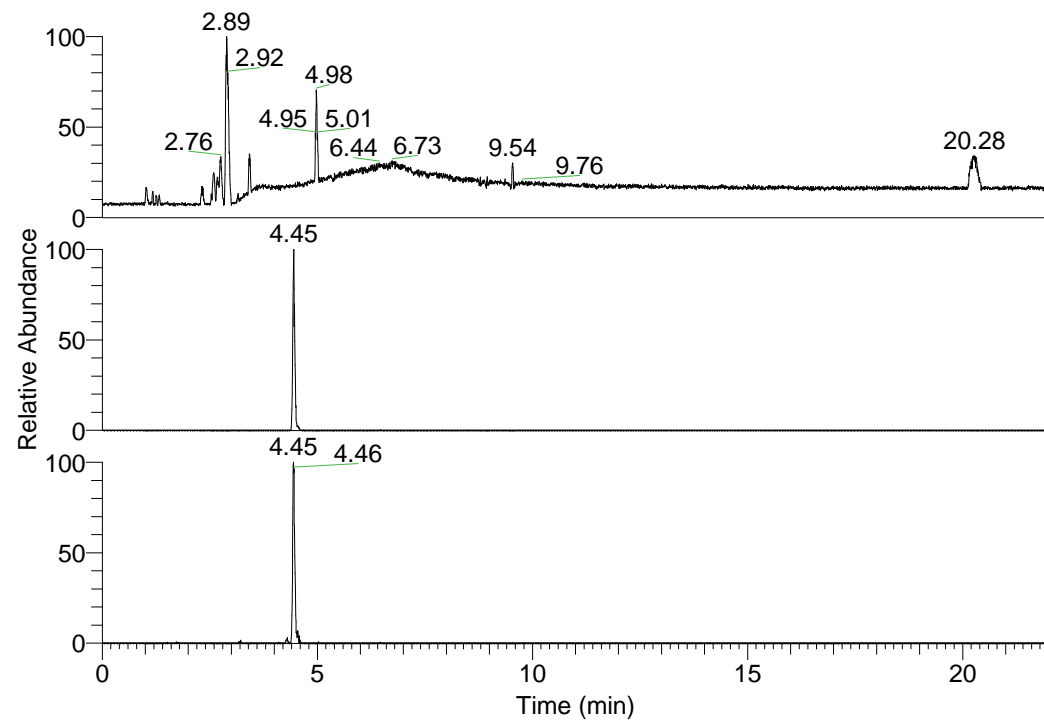


RT: 0.00 - 22.01



NL: 1.01E8
 Base Peak m/z=
 100.00000-1500.00000 F:
 FTMS + p ESI Full ms
 [100.00-1500.00] MS
 Nclavipes_HDX

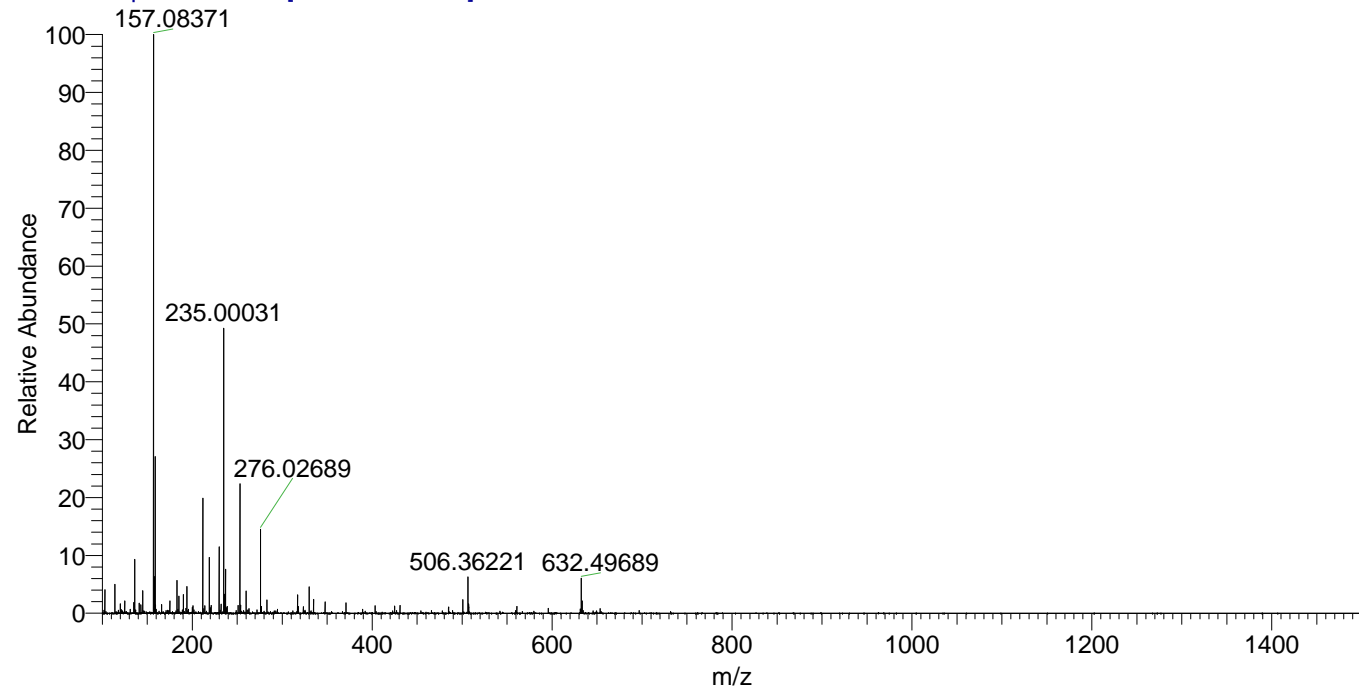
NL: 1.17E6
 Base Peak m/z=
 632.49386-632.50018 F:
 FTMS + p ESI Full ms
 [100.00-1500.00] MS
 Nclavipes_HDX

NL: 6.33E5
 Base Peak m/z=
 317.25397-317.25715 F:
 FTMS + p ESI Full ms
 [100.00-1500.00] MS
 Nclavipes_HDX

Nclavipes_HDX#698 RT: 4.45
 T: FTMS + p ESI Full ms [100.00-1500.00]
 m/z= 632.00000-633.00000

m/z	Intensity	Relative	Delta (ppm)	Composition
632.49689	1170275.8	100.00	0.66	C ₃₀ H ₃₈ ² H ₁₄ O ₅ N ₉
			-1.78	C ₃₀ H ₄₀ ² H ₁₃ O ₅ N ₉
			3.11	C ₃₀ H ₃₆ ² H ₁₅ O ₅ N ₉
			-4.23	C ₃₀ H ₄₂ ² H ₁₂ O ₅ N ₉

Nclavipes_HDX #698 RT: 4.45 AV: 1 NL: 1.81E7
 T: FTMS + p ESI Full ms [100.00-1500.00]



Nclavipes_HDX #698 RT: 4.45 AV: 1 NL: 1.10E6
 T: FTMS + p ESI Full ms [100.00-1500.00]

