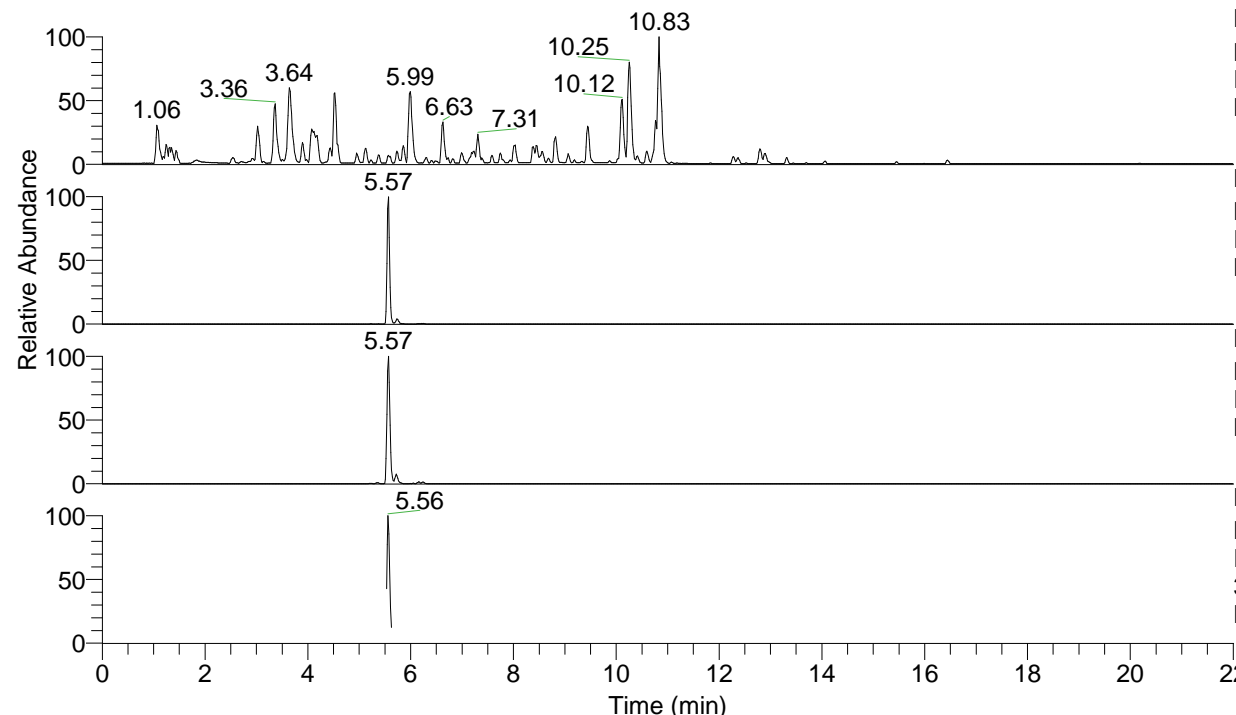


RT: 0.00 - 22.01



NL: 4.79E7  
 Base Peak m/z= 100.00000-1500.00000 F:  
 FTMS + p ESI Full ms [100.00-1500.00]  
 MS Nclavipes

NL: 3.42E6  
 Base Peak m/z= 618.40605-618.41223 F:  
 FTMS + p ESI Full ms [100.00-1500.00]  
 MS Nclavipes

NL: 1.51E6  
 Base Peak m/z= 309.70693-309.71003 F:  
 FTMS + p ESI Full ms [100.00-1500.00]  
 MS Nclavipes

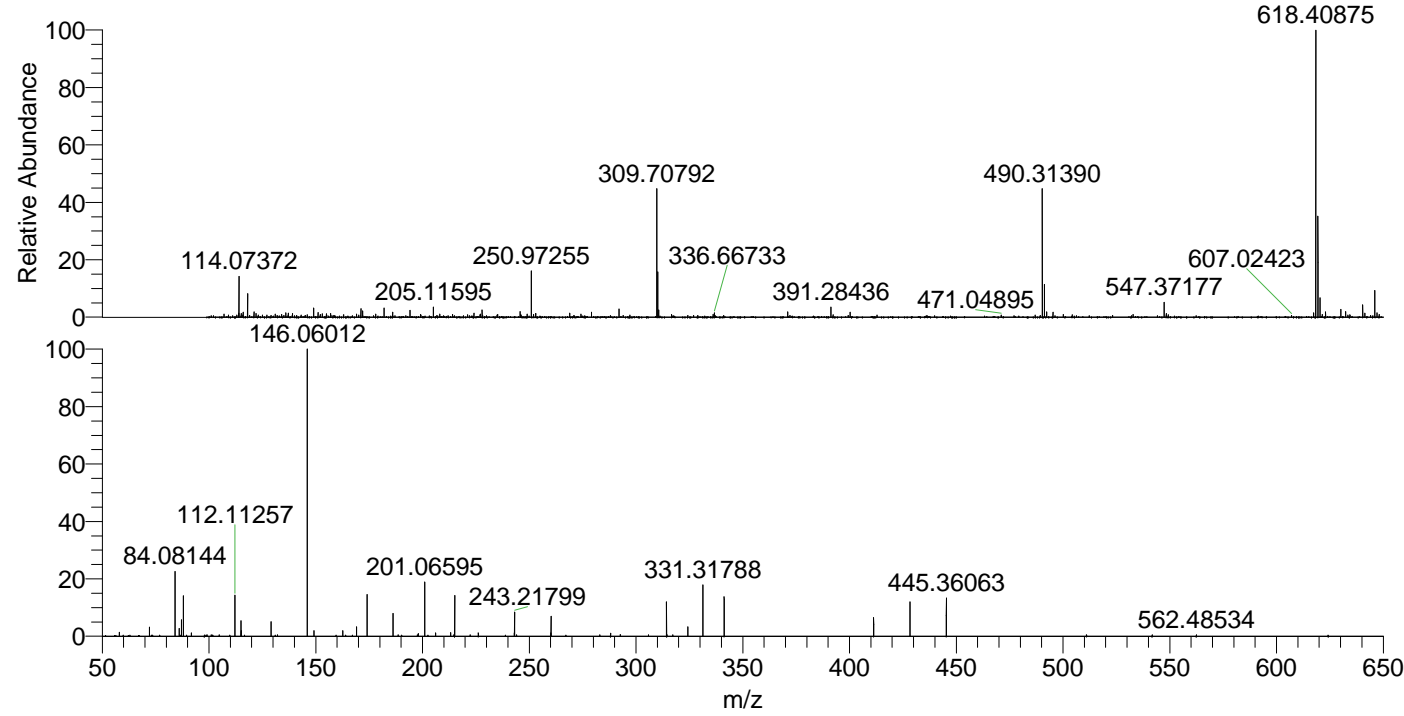
NL: 2.61E5  
 Base Peak m/z= 50.00000-1500.00000 F:  
 FTMS + p ESI d Full ms2  
 309.71@hcd35.00 [50.00-650.00] MS  
 Nclavipes

Nclavipes#2213-2229 RT: 5.55-5.59 AV:

F: FTMS + p ESI d Full ms2 309.71 ...

m/z= 50.00000-1000.00000

m/z	Intensity	Relative
58.06599	2918.8	1.46
72.08159	6308.7	3.15
84.08144	45986.1	22.98
86.06082	5387.6	2.69
87.05605	11897.7	5.95
88.03992	28581.9	14.28
91.75835	2488.3	1.24
99.09219	1034.0	0.52
112.11257	28489.4	14.24
115.05071	10865.2	5.43
115.12373	3857.7	1.93
129.10253	10504.4	5.25
129.13915	2319.0	1.16
132.14953	1014.5	0.51
146.06012	200099.8	100.00
149.13631	3820.7	1.91
162.64113	3859.2	1.93
169.13402	6616.3	3.31
174.05481	29056.2	14.52
186.16066	16018.1	8.01
198.05587	1869.9	0.93
201.06595	37712.1	18.85
206.15812	2494.6	1.25
213.20866	2537.1	1.27
214.67107	1018.9	0.51
215.08172	28461.2	14.22
226.15507	2389.2	1.19
226.19133	1903.8	0.95
243.07698	2426.7	1.21
243.18236	5534.7	2.77
243.21799	16905.1	8.45
260.10203	2326.9	1.16
260.24500	14175.6	7.08
283.06097	1002.7	0.50
288.09805	2145.9	1.07
292.68291	1231.3	0.62
305.88004	1057.4	0.53
314.29165	24170.1	12.08
317.26558	1062.6	0.53
324.27556	6592.8	3.29
331.31788	36366.0	18.17
341.30218	27828.8	13.91
411.30778	13465.6	6.73
428.33420	24602.8	12.30
445.36063	26811.7	13.40
562.48534	1008.1	0.50



NL: 3.28E6  
 Nclavipes#2221 RT: 5.57  
 AV: 1 T: FTMS + p ESI  
 Full lock ms  
 [100.00-1500.00]

NL: 1.99E5  
 Nclavipes#2209-2233 RT:  
 5.55-5.59 AV: 4 F: FTMS  
 + p ESI d Full ms2  
 309.71@hcd35.00  
 [50.00-650.00]