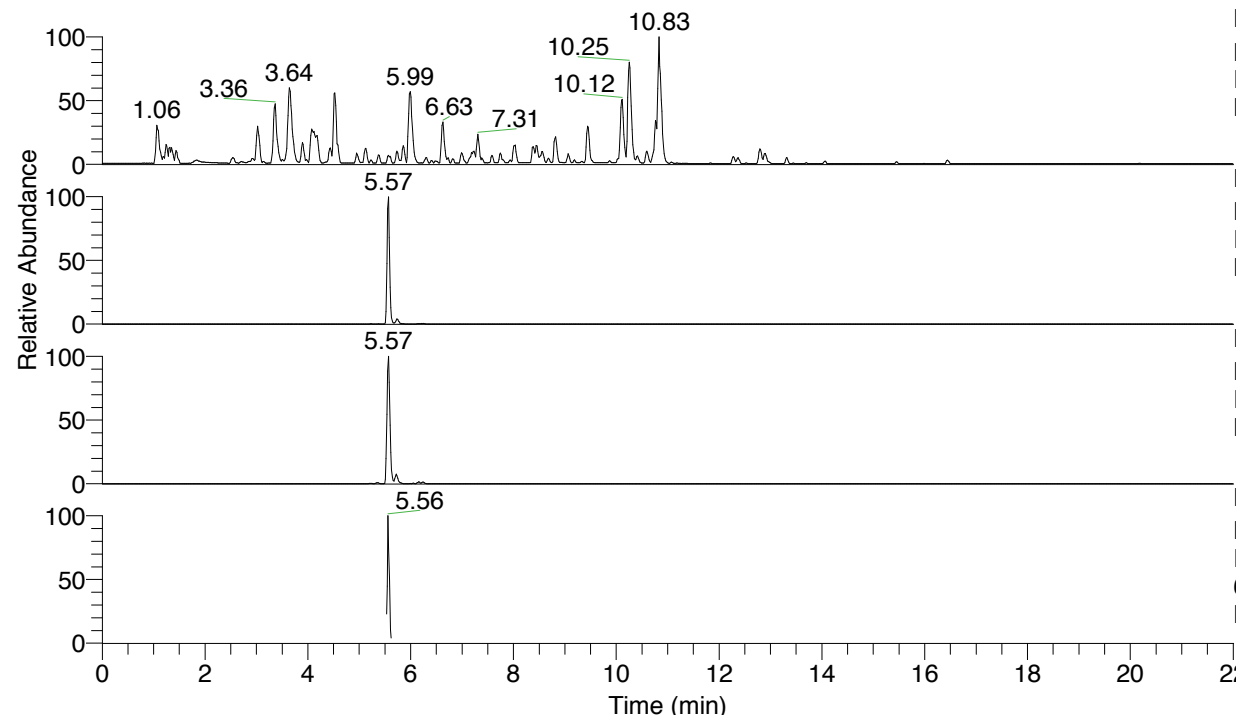


RT: 0.00 - 22.01



NL: 4.79E7
 Base Peak m/z= 100.00000-1500.00000 F:
 FTMS + p ESI Full ms [100.00-1500.00]
 MS Nclavipes

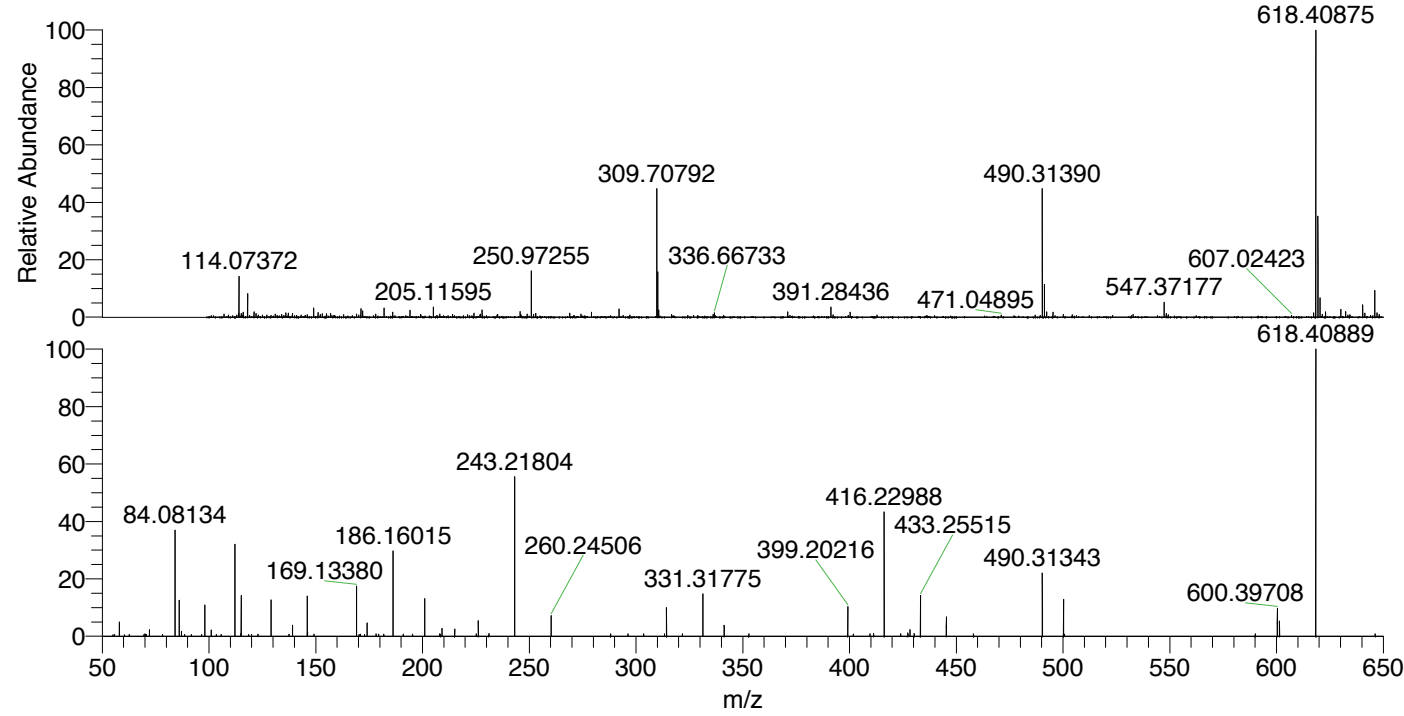
NL: 3.42E6
 Base Peak m/z= 618.40605-618.41223 F:
 FTMS + p ESI Full ms [100.00-1500.00]
 MS Nclavipes

NL: 1.51E6
 Base Peak m/z= 309.70693-309.71003 F:
 FTMS + p ESI Full ms [100.00-1500.00]
 MS Nclavipes

NL: 2.91E5
 Base Peak m/z= 50.00000-1500.00000 F:
 FTMS + p ESI d Full ms2
 618.41@hcd35.00 [50.00-650.00] MS
 Nclavipes

Nclavipes#2212-2228 RT: 5.55-5.59 AV:
 F: FTMS + p ESI d Full ms2 618.41 ...
 m/z= 50.00000-1000.00000

m/z	Intensity	Relative
58.06593	9177.8	4.91
72.08164	4253.2	2.28
84.08134	67797.8	36.27
84.08614	1523.5	0.82
86.06071	23706.6	12.68
87.05581	3072.9	1.64
98.09697	20705.0	11.08
101.10791	3985.3	2.13
112.11240	60158.3	32.18
115.05043	1704.6	0.91
115.12337	26530.5	14.19
129.10238	23439.7	12.54
129.13910	14485.6	7.75
139.12317	7223.2	3.86
146.06020	26680.5	14.27
146.16510	2799.7	1.50
169.13380	32546.3	17.41
174.05534	8406.3	4.50
186.16015	55442.4	29.66
201.06566	24796.2	13.27
208.14594	1606.2	0.86
209.12871	5035.5	2.69
215.08218	4704.0	2.52
226.15546	9933.8	5.31
231.11448	1703.9	0.91
243.18071	12655.8	6.77
243.21804	102263.2	54.71
260.24506	13196.3	7.06
288.09789	1554.9	0.83
296.28131	1607.5	0.86
303.60080	1520.8	0.81
313.30798	1482.9	0.79
314.29171	18778.7	10.05
321.72363	1497.6	0.80
331.31775	27556.3	14.74
341.30352	7183.5	3.84
352.87543	1476.6	0.79
399.20216	19099.2	10.22
409.59288	1584.6	0.85
411.30619	1654.0	0.88
416.22988	81492.0	43.60
423.97550	1528.6	0.82
427.34612	2265.3	1.21
428.33548	4266.2	2.28
430.32906	1862.7	1.00
433.25515	26752.3	14.31
445.36343	12579.2	6.73
458.06758	1534.5	0.82
490.31343	40488.7	21.66
500.29796	23888.9	12.78
590.07853	1560.3	0.83
600.39708	17947.3	9.60
601.38313	10030.4	5.37
618.40889	186924.0	100.00
646.20734	1601.1	0.86



NL: 3.28E6
 Nclavipes#2221 RT: 5.57
 AV: 1 T: FTMS + p ESI
 Full lock ms
 [100.00-1500.00]

NL: 1.84E5
 Nclavipes#2210-2230 RT:
 5.55-5.59 AV: 4 F: FTMS
 + p ESI d Full ms2
 618.41@hcd35.00
 [50.00-650.00]

Nclavipes#2212-2228 RT: 5.55-5.59 AV: 4

F: FTMS + p ESI d Full ms2 618.41@hcd35.00 [50.00-650.00]

m/z= 50.00000-1000.00000

m/z	Intensity	Relative
54.99291	944.5	0.51
55.72344	1082.2	0.58
58.06593	9177.8	4.91
60.35836	956.7	0.51
62.61174	1052.6	0.56
69.56608	1209.6	0.65
70.06602	1465.3	0.78
70.45863	1194.7	0.64
70.54842	1178.4	0.63
72.08164	4253.2	2.28
78.20526	1191.8	0.64
84.08134	67797.8	36.27
84.08614	1523.5	0.82
86.06071	23706.6	12.68
87.05581	3072.9	1.64
88.56102	1077.6	0.58
91.75781	1111.1	0.59
96.55659	1102.7	0.59
98.09697	20705.0	11.08
101.10791	3985.3	2.13
103.48412	1142.1	0.61
105.73153	1191.3	0.64
112.11240	60158.3	32.18
115.05043	1704.6	0.91
115.12337	26530.5	14.19
118.59907	1229.9	0.66
119.95964	1199.2	0.64
122.97790	1375.5	0.74
129.10238	23439.7	12.54
129.13910	14485.6	7.75
137.52535	1270.9	0.68
139.12317	7223.2	3.86
146.06020	26680.5	14.27
146.16510	2799.7	1.50
149.11938	1302.0	0.70
169.13380	32546.3	17.41
170.29650	1219.6	0.65
170.91834	1242.0	0.66
172.88973	1188.3	0.64

Nclavipes#2212-2228 RT: 5.55-5.59 AV: 4

F: FTMS + p ESI d Full ms2 618.41@hcd35.00 [50.00-650.00]

m/z= 50.00000-1000.00000

m/z	Intensity	Relative
174.05534	8406.3	4.50
178.24949	1463.3	0.78
179.45292	1300.2	0.70
181.90604	1394.4	0.75
186.16015	55442.4	29.66
191.03790	1314.0	0.70
195.37209	1436.1	0.77
201.06566	24796.2	13.27
208.14594	1606.2	0.86
208.31263	1439.5	0.77
209.12871	5035.5	2.69
215.08218	4704.0	2.52
225.20588	1442.3	0.77
226.15546	9933.8	5.31
231.11448	1703.9	0.91
243.18071	12655.8	6.77
243.21804	102263.2	54.71
260.24506	13196.3	7.06
288.09789	1554.9	0.83
296.28131	1607.5	0.86
303.60080	1520.8	0.81
313.30798	1482.9	0.79
314.29171	18778.7	10.05
321.72363	1497.6	0.80
331.31775	27556.3	14.74
341.30352	7183.5	3.84
352.87543	1476.6	0.79
399.20216	19099.2	10.22
401.79641	1411.3	0.75
409.59288	1584.6	0.85
411.30619	1654.0	0.88
416.22988	81492.0	43.60
423.97550	1528.6	0.82
427.34612	2265.3	1.21
428.33548	4266.2	2.28
430.32906	1862.7	1.00
433.25515	26752.3	14.31
445.36343	12579.2	6.73
458.06758	1534.5	0.82

Nclavipes#2212-2228 RT: 5.55-5.59 AV: 4

F: FTMS + p ESI d Full ms2 618.41@hcd35.00 [50.00-650.00]

m/z= 50.00000-1000.00000

m/z	Intensity	Relative
490.31343	40488.7	21.66
500.29796	23888.9	12.78
500.66857	1426.1	0.76
590.07853	1560.3	0.83
600.39708	17947.3	9.60
601.38313	10030.4	5.37
618.40889	186924.0	100.00
646.20734	1601.1	0.86