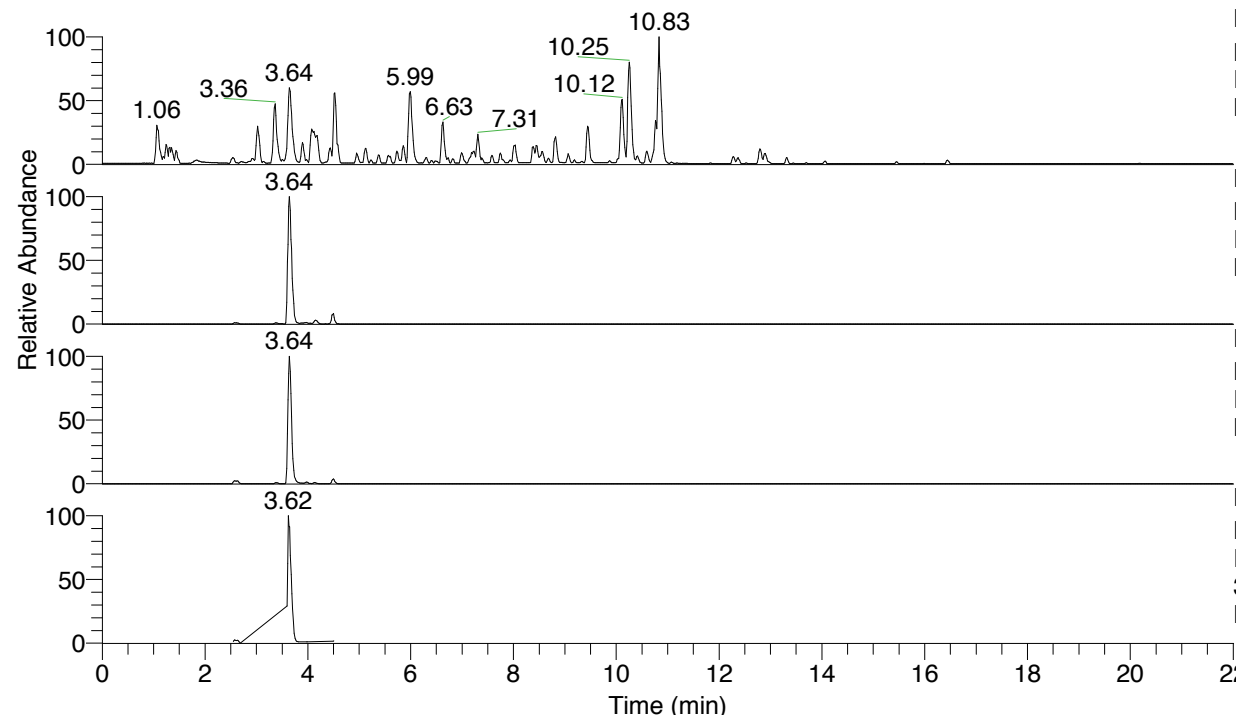


RT: 0.00 - 22.01



NL: 4.79E7
 Base Peak m/z= 100.00000-1500.00000 F:
 FTMS + p ESI Full ms [100.00-1500.00]
 MS Nclavipes

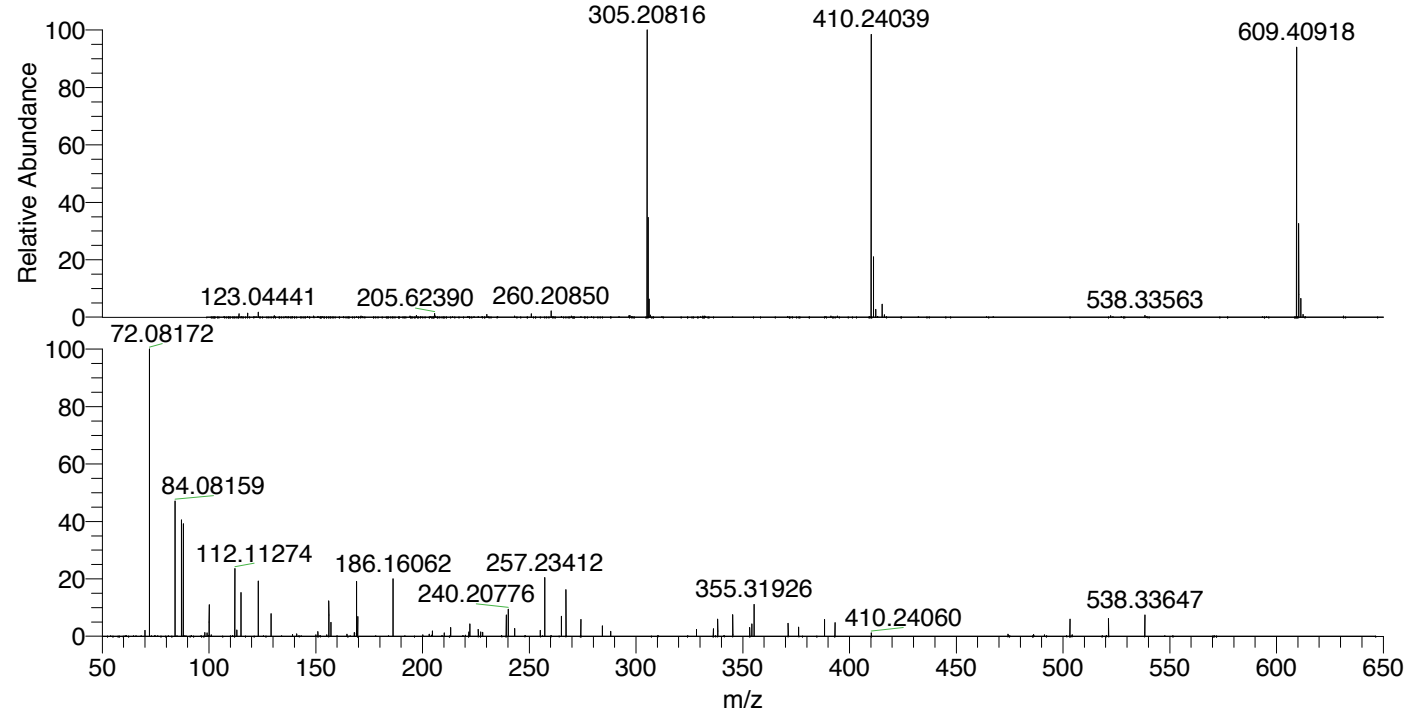
NL: 2.75E7
 Base Peak m/z= 609.40576-609.41186 F:
 FTMS + p ESI Full ms [100.00-1500.00]
 MS Nclavipes

NL: 2.79E7
 Base Peak m/z= 305.20679-305.20985 F:
 FTMS + p ESI Full ms [100.00-1500.00]
 MS Nclavipes

NL: 2.57E6
 Base Peak m/z= 50.00000-1500.00000 F:
 FTMS + p ESI d Full ms2
 305.21@hcd35.00 [50.00-640.00] MS
 Nclavipes

Nclavipes#1438-1467 RT: 3.61-3.67 AV: 6
 F: FTMS + p ESI d Full ms2 305.21@h ...
 m/z= 50.00000-1000.00000

m/z	Intensity	Relative
70.02970	38378.9	2.02
72.08172	1904052.5	100.00
84.08159	885454.3	46.50
87.05608	763106.9	40.08
88.04011	760572.0	39.94
98.02446	24201.3	1.27
99.09246	23138.1	1.22
100.07641	205152.3	10.77
112.07633	157892.5	8.29
112.11274	442761.9	23.25
113.10826	41668.5	2.19
115.05082	290830.5	15.27
123.04455	372492.3	19.56
129.10264	149277.2	7.84
129.13934	42822.6	2.25
151.03959	29676.5	1.56
156.14397	235632.0	12.38
157.13412	91092.7	4.78
168.06647	25176.1	1.32
169.13400	361274.0	18.97
169.64972	130288.5	6.84
186.16062	375182.9	19.70
204.65290	35424.1	1.86
210.19794	22688.0	1.19
213.16652	57158.0	3.00
221.67987	28135.6	1.48
222.19707	80628.5	4.23
226.15621	46739.9	2.45
227.22412	27722.5	1.46
228.20796	26157.9	1.37
239.22386	138738.0	7.29
240.20776	182735.3	9.60
243.18270	51332.0	2.70
255.21920	39074.1	2.05
257.23412	396955.5	20.85
265.08237	129889.4	6.82
267.21862	311303.7	16.35
274.26059	108888.5	5.72
284.24545	67445.1	3.54
288.18236	31860.8	1.67
328.30783	45412.8	2.39
336.24118	51401.7	2.70
338.29214	116631.8	6.13
345.33459	142413.5	7.48
353.26788	58137.2	3.05
354.25085	80005.3	4.20
355.31926	213377.5	11.21
371.27740	87445.2	4.59
376.18818	60535.4	3.18
388.30393	112494.9	5.91
393.21418	91681.8	4.82
410.24060	21956.4	1.15
503.29835	113895.5	5.98
521.30891	116303.3	6.11
538.33647	139597.4	7.33



NL: 2.76E7
 Nclavipes#1453 RT: 3.64
 AV: 1 T: FTMS + p ESI
 Full ms [100.00-1500.00]

NL: 1.87E6
 Nclavipes#1436-1470 RT:
 3.61-3.67 AV: 6 F: FTMS
 + p ESI d Full ms2
 305.21@hcd35.00
 [50.00-640.00]

Nclavipes#1438-1467 RT: 3.61-3.67 AV: 6

F: FTMS + p ESI d Full ms2 305.21@hcd35.00 [50.00-640.00]

m/z= 50.00000-1000.00000

m/z	Intensity	Relative
70.02970	38378.9	2.02
70.06612	20552.6	1.08
72.08172	1904052.5	100.00
84.08159	885454.3	46.50
87.05608	763106.9	40.08
88.04011	760572.0	39.94
98.02446	24201.3	1.27
99.09246	23138.1	1.22
100.07641	205152.3	10.77
101.10801	10265.7	0.54
112.07633	157892.5	8.29
112.11274	442761.9	23.25
113.10826	41668.5	2.19
115.05082	290830.5	15.27
123.04455	372492.3	19.56
129.10264	149277.2	7.84
129.13934	42822.6	2.25
139.12364	12426.6	0.65
141.10265	16405.3	0.86
150.05573	9963.2	0.52
151.03959	29676.5	1.56
155.11886	9641.9	0.51
156.14397	235632.0	12.38
157.13412	91092.7	4.78
164.65794	13393.0	0.70
168.06647	25176.1	1.32
168.15025	21174.8	1.11
169.13400	361274.0	18.97
169.64972	130288.5	6.84
186.16062	375182.9	19.70
203.18801	12681.0	0.67
204.65290	35424.1	1.86
210.19794	22688.0	1.19
213.16652	57158.0	3.00
221.67987	28135.6	1.48
222.19707	80628.5	4.23
226.15621	46739.9	2.45
227.22412	27722.5	1.46
228.20796	26157.9	1.37

Nclavipes#1438-1467 RT: 3.61-3.67 AV: 6

F: FTMS + p ESI d Full ms2 305.21@hcd35.00 [50.00-640.00]

m/z= 50.00000-1000.00000

m/z	Intensity	Relative
239.22386	138738.0	7.29
240.20776	182735.3	9.60
243.18270	51332.0	2.70
255.21920	39074.1	2.05
257.23412	396955.5	20.85
265.08237	129889.4	6.82
267.21862	311303.7	16.35
274.26059	108888.5	5.72
284.24545	67445.1	3.54
288.18236	31860.8	1.67
328.30783	45412.8	2.39
336.24118	51401.7	2.70
338.29214	116631.8	6.13
345.33459	142413.5	7.48
353.26788	58137.2	3.05
354.25085	80005.3	4.20
355.31926	213377.5	11.21
371.27740	87445.2	4.59
376.18818	60535.4	3.18
388.30393	112494.9	5.91
393.21418	91681.8	4.82
410.24060	21956.4	1.15
474.27161	13790.0	0.72
486.27141	10670.0	0.56
491.30087	9977.5	0.52
503.29835	113895.5	5.98
504.28397	9611.1	0.50
521.30891	116303.3	6.11
538.33647	139597.4	7.33