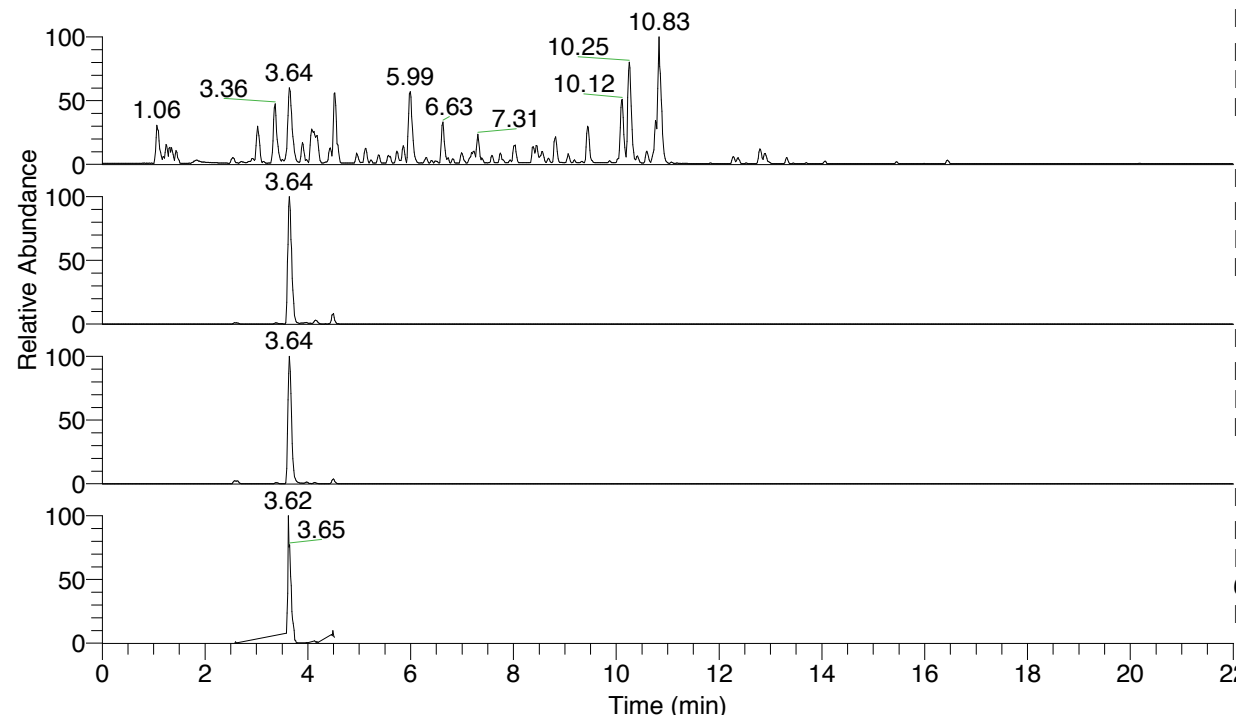


RT: 0.00 - 22.01



NL: 4.79E7  
 Base Peak m/z= 100.00000-1500.00000 F:  
 FTMS + p ESI Full ms [100.00-1500.00]  
 MS Nclavipes

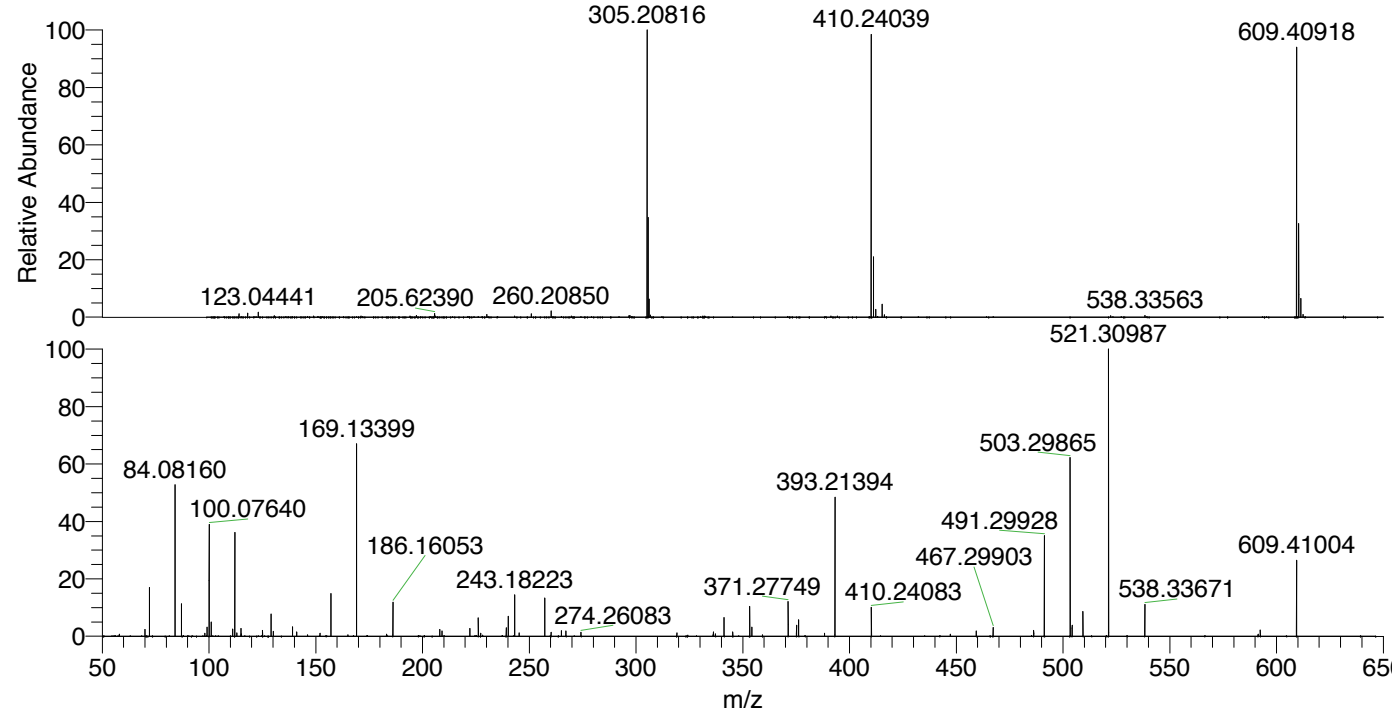
NL: 2.75E7  
 Base Peak m/z= 609.40576-609.41186 F:  
 FTMS + p ESI Full ms [100.00-1500.00]  
 MS Nclavipes

NL: 2.79E7  
 Base Peak m/z= 305.20679-305.20985 F:  
 FTMS + p ESI Full ms [100.00-1500.00]  
 MS Nclavipes

NL: 2.18E6  
 Base Peak m/z= 50.00000-1500.00000 F:  
 FTMS + p ESI d Full ms2  
 609.41@hcd35.00 [50.00-640.00] MS  
 Nclavipes

Nclavipes#1437-1474 RT: 3.61-3.69 AV: 7  
 F: FTMS + p ESI d Full ms2 609.41@h ...  
 m/z= 50.00000-1000.00000

m/z	Intensity	Relative
70.06606	30736.3	2.42
72.08169	223822.0	17.63
84.08160	672139.6	52.94
87.05614	143118.4	11.27
99.09244	40891.1	3.22
100.07640	496143.4	39.08
101.10805	61184.3	4.82
111.09240	30420.9	2.40
112.07622	348592.4	27.46
112.11272	464222.6	36.57
113.10787	16687.3	1.31
115.05085	36038.9	2.84
125.10791	24654.1	1.94
129.10266	99241.2	7.82
129.13912	89437.6	7.04
130.12316	22741.3	1.79
139.12336	42494.2	3.35
141.10296	20431.5	1.61
157.13388	193802.5	15.27
169.13399	869569.8	68.49
186.16056	152522.5	12.01
208.14547	32157.5	2.53
209.12959	24169.9	1.90
222.19722	32165.9	2.53
226.15558	80127.1	6.31
239.22384	39193.1	3.09
240.20732	89935.0	7.08
243.18222	185042.3	14.58
257.23390	173917.0	13.70
260.20904	17170.4	1.35
265.08244	26256.4	2.07
267.21917	21751.2	1.71
274.26083	16202.6	1.28
319.13005	14317.0	1.13
336.24100	18546.7	1.46
341.26666	80946.7	6.38
345.33407	17663.0	1.39
353.26630	135160.6	10.65
354.25110	38220.9	3.01
371.27734	158123.3	12.46
375.20398	46327.7	3.65
376.18731	71475.1	5.63
393.21395	634021.0	49.94
410.24084	127809.3	10.07
459.37767	23162.9	1.82
467.29902	40596.9	3.20
486.27129	24021.8	1.89
491.29926	457796.9	36.06
503.29860	808558.3	63.69
504.28309	48808.3	3.84
509.30899	113964.3	8.98
521.30985	1269543.8	100.00
538.33675	142657.3	11.24
592.38314	25449.6	2.00
609.41012	337500.9	26.58



NL: 2.76E7  
 Nclavipes#1453 RT: 3.64  
 AV: 1 T: FTMS + p ESI  
 Full ms [100.00-1500.00]

NL: 1.39E6  
 Nclavipes#1435-1471 RT:  
 3.61-3.68 AV: 6 F: FTMS  
 + p ESI d Full ms2  
 609.41@hcd35.00  
 [50.00-640.00]

260.20904	17170.4	1.35
265.08244	26256.4	2.07
267.21917	21751.2	1.71
274.26083	16202.6	1.28
319.13005	14317.0	1.13
336.24100	18546.7	1.46
341.26666	80946.7	6.38
345.33407	17663.0	1.39
353.26630	135160.6	10.65
354.25110	38220.9	3.01
371.27734	158123.3	12.46
375.20398	46327.7	3.65
376.18731	71475.1	5.63
393.21395	634021.0	49.94
410.24084	127809.3	10.07
459.37767	23162.9	1.82
467.29902	40596.9	3.20
486.27129	24021.8	1.89
491.29926	457796.9	36.06
503.29860	808558.3	63.69
504.28309	48808.3	3.84
509.30899	113964.3	8.98
521.30985	1269543.8	100.00
538.33675	142657.3	11.24
592.38314	25449.6	2.00
609.41012	337500.9	26.58

Nclavipes#1437-1474 RT: 3.61-3.69 AV: 7

F: FTMS + p ESI d Full ms2 609.41@hcd35.00 [50.00-640.00]

m/z= 50.00000-1000.00000

m/z	Intensity	Relative
58.06609	9094.5	0.72
70.06606	30736.3	2.42
72.08169	223822.0	17.63
84.08160	672139.6	52.94
87.05614	143118.4	11.27
98.09728	13321.7	1.05
99.09244	40891.1	3.22
100.07640	496143.4	39.08
101.10805	61184.3	4.82
111.09240	30420.9	2.40
112.07622	348592.4	27.46
112.11272	464222.6	36.57
113.10787	16687.3	1.31
115.05085	36038.9	2.84
115.12381	9560.0	0.75
125.10791	24654.1	1.94
129.10266	99241.2	7.82
129.13912	89437.6	7.04
130.12316	22741.3	1.79
139.12336	42494.2	3.35
141.10296	20431.5	1.61
152.07133	12760.8	1.01
157.13388	193802.5	15.27
165.10287	6726.9	0.53
169.09776	8808.2	0.69
169.13399	869569.8	68.49
183.14969	8809.3	0.69
186.16056	152522.5	12.01
208.14547	32157.5	2.53
209.12959	24169.9	1.90
222.19722	32165.9	2.53
226.15558	80127.1	6.31
227.22345	12527.1	0.99
239.22384	39193.1	3.09
240.20732	89935.0	7.08
243.18222	185042.3	14.58
245.23436	13486.3	1.06
257.23390	173917.0	13.70
260.20904	17170.4	1.35

Nclavipes#1437-1474 RT: 3.61-3.69 AV: 7

F: FTMS + p ESI d Full ms2 609.41@hcd35.00 [50.00-640.00]

m/z= 50.00000-1000.00000

m/z	Intensity	Relative
265.08244	26256.4	2.07
267.21917	21751.2	1.71
274.26083	16202.6	1.28
319.13005	14317.0	1.13
336.24100	18546.7	1.46
337.22413	10148.0	0.80
341.26666	80946.7	6.38
345.33407	17663.0	1.39
353.26630	135160.6	10.65
354.25110	38220.9	3.01
371.27734	158123.3	12.46
375.20398	46327.7	3.65
376.18731	71475.1	5.63
388.30362	14060.8	1.11
393.21395	634021.0	49.94
410.24084	127809.3	10.07
447.22383	9017.5	0.71
459.37767	23162.9	1.82
467.29902	40596.9	3.20
486.27129	24021.8	1.89
491.29926	457796.9	36.06
503.29860	808558.3	63.69
504.28309	48808.3	3.84
509.30899	113964.3	8.98
521.30985	1269543.8	100.00
538.33675	142657.3	11.24
591.39801	8625.6	0.68
592.38314	25449.6	2.00
609.41012	337500.9	26.58