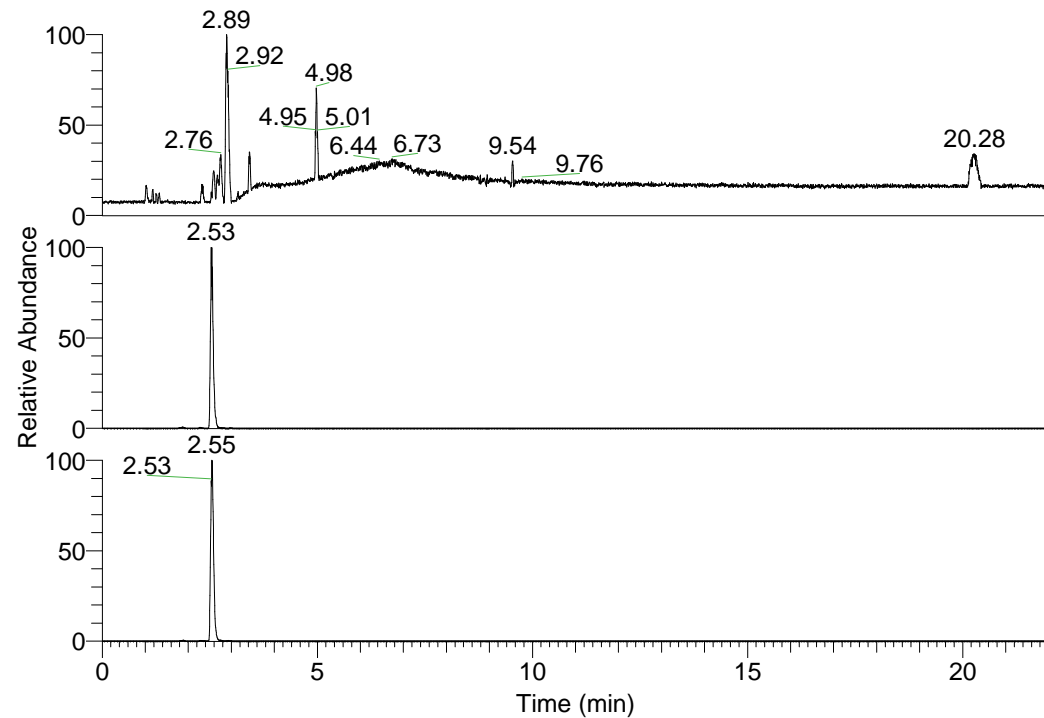


RT: 0.00 - 22.01



NL: 1.01E8
 Base Peak m/z=
 100.00000-1500.00000 F:
 FTMS + p ESI Full ms
 [100.00-1500.00] MS
 Nclavipes_HDX

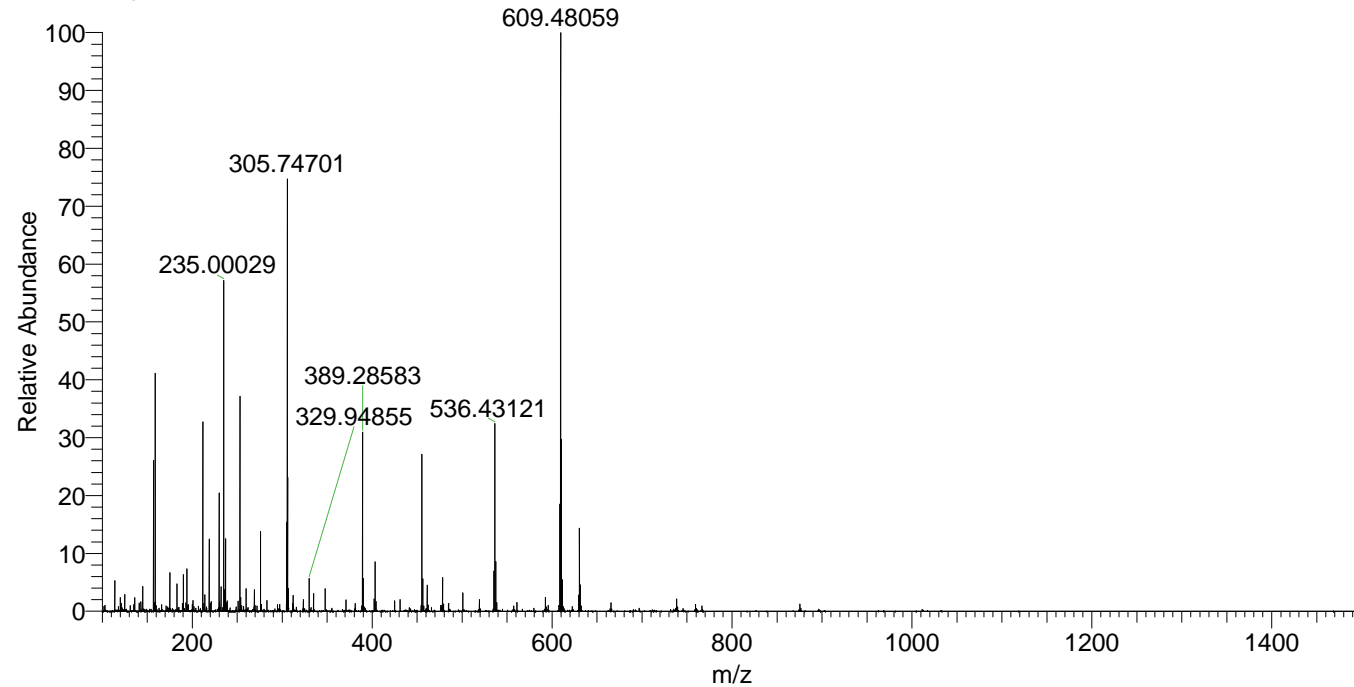
NL: 1.32E7
 Base Peak m/z=
 609.47798-609.48408 F:
 FTMS + p ESI Full ms
 [100.00-1500.00] MS
 Nclavipes_HDX

NL: 1.12E7
 Base Peak m/z=
 305.74604-305.74910 F:
 FTMS + p ESI Full ms
 [100.00-1500.00] MS
 Nclavipes_HDX

Nclavipes_HDX#386 RT: 2.53
 T: FTMS + p ESI Full ms [100.00-1500.00]
 m/z= 609.00000-610.00000

m/z	Intensity	Relative	Delta (ppm)	Composition
609.48059	13213465.0	100.00	0.18	C ₂₈ H ₃₇ ² H ₁₄ O ₆ N ₈
			-2.36	C ₂₈ H ₃₉ ² H ₁₃ O ₆ N ₈
			2.72	C ₂₈ H ₃₅ ² H ₁₅ O ₆ N ₈
			-4.90	C ₂₈ H ₄₁ ² H ₁₂ O ₆ N ₈

Nclavipes_HDX #386 RT: 2.53 AV: 1 NL: 1.31E7
 T: FTMS + p ESI Full ms [100.00-1500.00]



Nclavipes_HDX #386 RT: 2.53 AV: 1 NL: 1.31E7
 T: FTMS + p ESI Full ms [100.00-1500.00]

