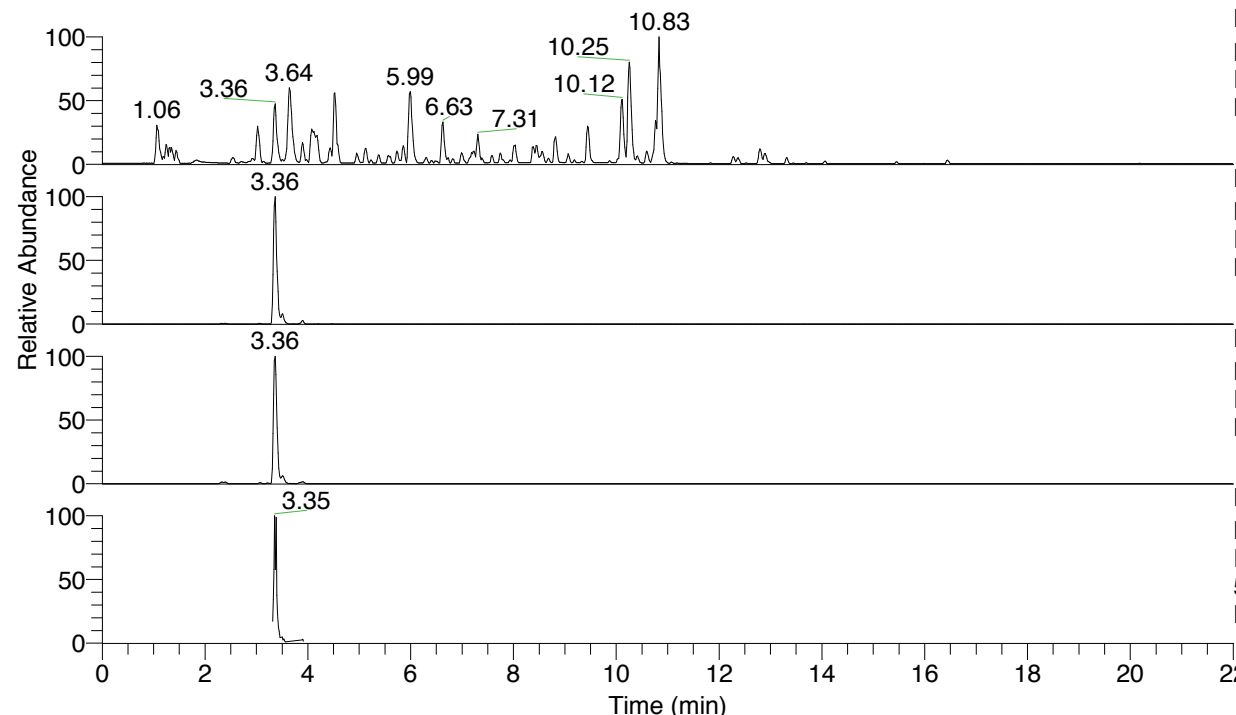


RT: 0.00 - 22.01



NL: 4.79E7  
 Base Peak m/z= 100.00000-1500.00000 F:  
 FTMS + p ESI Full ms [100.00-1500.00]  
 MS Nclavipes

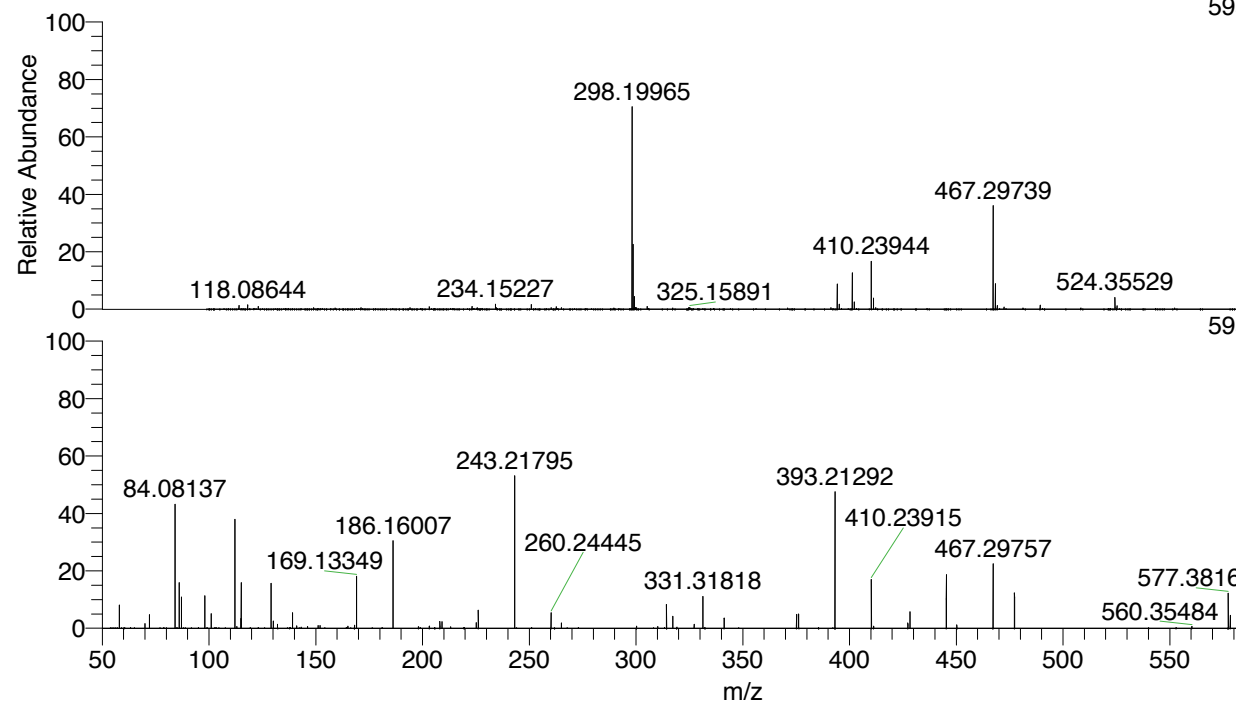
NL: 2.28E7  
 Base Peak m/z= 595.39018-595.39614 F:  
 FTMS + p ESI Full ms [100.00-1500.00]  
 MS Nclavipes

NL: 1.58E7  
 Base Peak m/z= 298.19900-298.20198 F:  
 FTMS + p ESI Full ms [100.00-1500.00]  
 MS Nclavipes

NL: 1.72E6  
 Base Peak m/z= 50.00000-1500.00000 F:  
 FTMS + p ESI d Full ms2  
 595.39@hcd35.00 [50.00-625.00] MS  
 Nclavipes

Nclavipes#1324-1358 RT: 3.33-3.41 AV:  
 F: FTMS + p ESI d Full ms2 595.39 ...  
 m/z= 50.00000-1000.00000

m/z	Intensity	Relative
58.06596	78340.5	8.05
70.06592	18423.5	1.89
72.08160	46447.5	4.77
84.08138	419629.8	43.13
86.06065	158656.4	16.31
87.05586	104775.8	10.77
98.09688	112429.8	11.56
101.10795	49528.2	5.09
112.11246	369357.8	37.96
115.05063	32437.6	3.33
115.12332	156666.9	16.10
129.10237	150040.8	15.42
129.13865	77893.0	8.01
130.12283	24502.5	2.52
132.14989	12043.5	1.24
139.12331	55354.0	5.69
141.10234	8141.3	0.84
151.12367	7484.5	0.77
152.07098	9043.9	0.93
165.10274	7075.7	0.73
168.14984	10044.8	1.03
169.09722	8352.3	0.86
169.13350	174809.4	17.97
186.16009	292287.3	30.04
203.22386	7445.3	0.77
208.14480	22678.5	2.33
209.12918	20683.1	2.13
225.20781	17355.5	1.78
226.15539	62582.5	6.43
226.19227	7290.5	0.75
243.18189	145479.0	14.95
243.21799	504525.9	51.86
260.20905	20663.8	2.12
260.24446	54965.8	5.65
265.08237	16822.4	1.73
300.23952	9430.4	0.97
314.29216	79481.2	8.17
317.26698	40777.4	4.19
327.25086	13121.2	1.35
331.31829	108388.2	11.14
341.30318	32692.3	3.36
375.20345	47430.7	4.88
376.18676	47286.5	4.86
393.21297	474154.8	48.74
393.29385	8787.3	0.90
410.23914	162159.6	16.67
427.35159	16810.8	1.73
428.33478	53556.9	5.50
445.36105	175773.3	18.07
450.27196	11434.0	1.18
467.29752	214627.0	22.06
477.28144	117142.2	12.04
577.38146	116414.7	11.97
578.36588	41112.1	4.23
595.39275	972892.7	100.00



NL: 2.24E7  
 Nclavipes#1339 RT: 3.36  
 AV: 1 T: FTMS + p ESI  
 Full ms [100.00-1500.00]

NL: 1.13E6  
 Nclavipes#1328-1355 RT:  
 3.34-3.40 AV: 5 F: FTMS  
 + p ESI d Full ms2  
 595.39@hcd35.00  
 [50.00-625.00]

Nclavipes#1324-1358 RT: 3.33-3.41 AV: 7

F: FTMS + p ESI d Full ms2 595.39@hcd35.00 [50.00-625.00]

m/z= 50.00000-1000.00000

m/z	Intensity	Relative
58.06596	78340.5	8.05
70.06592	18423.5	1.89
72.08160	46447.5	4.77
84.08138	419629.8	43.13
86.06065	158656.4	16.31
87.05586	104775.8	10.77
98.09688	112429.8	11.56
101.10795	49528.2	5.09
112.11246	369357.8	37.96
113.10778	5038.0	0.52
115.05063	32437.6	3.33
115.12332	156666.9	16.10
129.10237	150040.8	15.42
129.13865	77893.0	8.01
130.12283	24502.5	2.52
132.14989	12043.5	1.24
139.12331	55354.0	5.69
141.10234	8141.3	0.84
146.16461	5114.5	0.53
151.12367	7484.5	0.77
152.07098	9043.9	0.93
165.10274	7075.7	0.73
168.14984	10044.8	1.03
169.09722	8352.3	0.86
169.13350	174809.4	17.97
186.16009	292287.3	30.04
198.12412	5117.1	0.53
203.22386	7445.3	0.77
208.14480	22678.5	2.33
208.18052	6065.8	0.62
209.12918	20683.1	2.13
225.17154	4870.6	0.50
225.20781	17355.5	1.78
226.15539	62582.5	6.43
226.19227	7290.5	0.75
243.18189	145479.0	14.95
243.21799	504525.9	51.86
260.20905	20663.8	2.12
260.24446	54965.8	5.65

Nclavipes#1324-1358 RT: 3.33-3.41 AV: 7

F: FTMS + p ESI d Full ms2 595.39@hcd35.00 [50.00-625.00]

m/z= 50.00000-1000.00000

m/z	Intensity	Relative
265.08237	16822.4	1.73
300.23952	9430.4	0.97
314.29216	79481.2	8.17
317.26698	40777.4	4.19
327.25086	13121.2	1.35
331.31829	108388.2	11.14
341.30318	32692.3	3.36
375.20345	47430.7	4.88
376.18676	47286.5	4.86
393.21297	474154.8	48.74
393.29385	8787.3	0.90
410.23914	162159.6	16.67
411.30825	6924.1	0.71
427.35159	16810.8	1.73
428.33478	53556.9	5.50
445.36105	175773.3	18.07
450.27196	11434.0	1.18
467.29752	214627.0	22.06
477.28144	117142.2	12.04
560.35484	5238.3	0.54
577.38146	116414.7	11.97
578.36588	41112.1	4.23
595.39275	972892.7	100.00