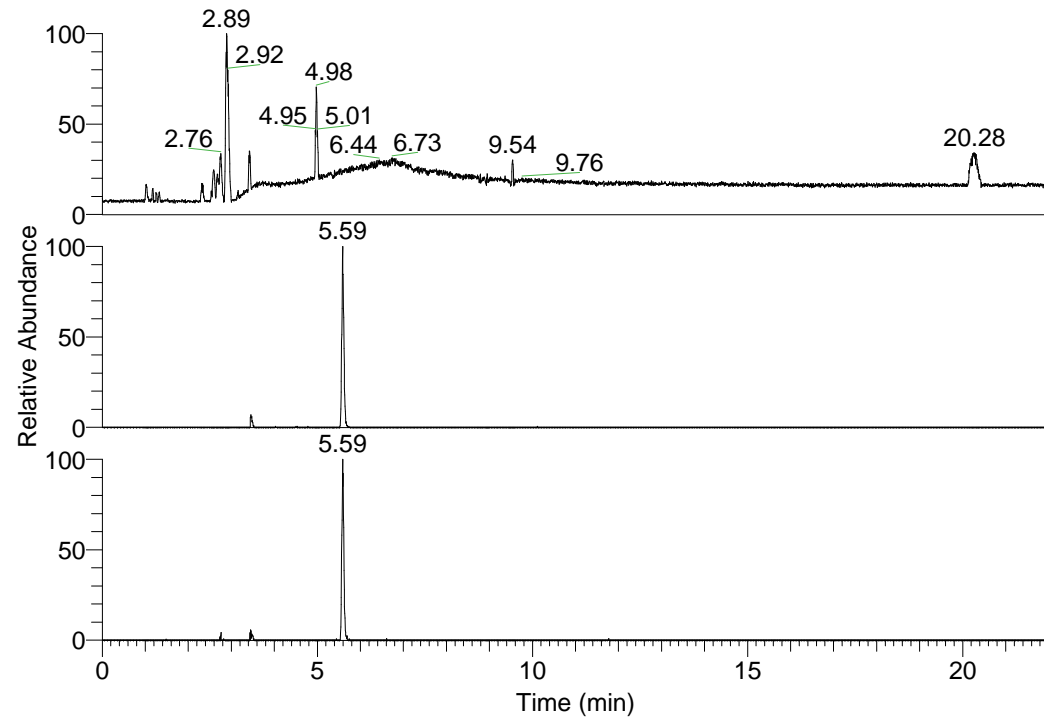


RT: 0.00 - 22.01



NL: 1.01E8
 Base Peak m/z=
 100.00000-1500.00000 F:
 FTMS + p ESI Full ms
 [100.00-1500.00] MS
 Nclavipes_HDX

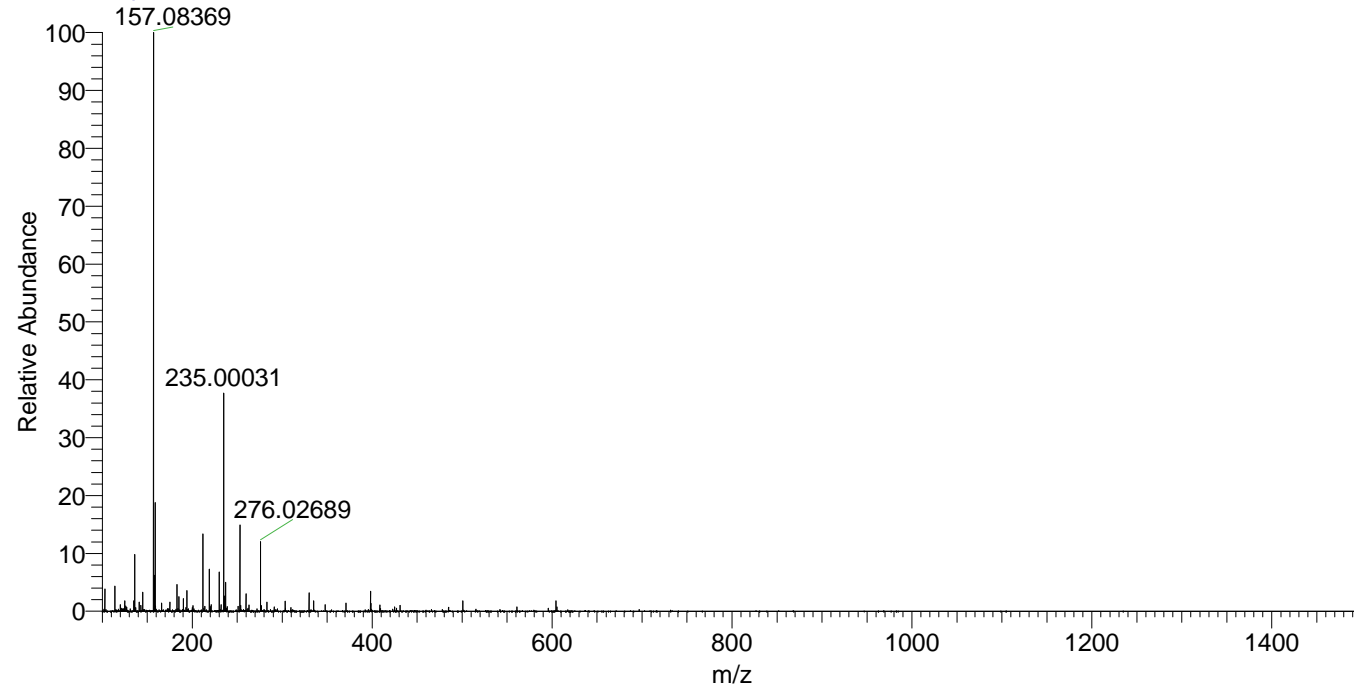
NL: 4.62E5
 Base Peak m/z=
 604.44857-604.45461 F:
 FTMS + p ESI Full ms
 [100.00-1500.00] MS
 Nclavipes_HDX

NL: 4.33E5
 Base Peak m/z=
 303.23133-303.23437 F:
 FTMS + p ESI Full ms
 [100.00-1500.00] MS
 Nclavipes_HDX

Nclavipes_HDX#883 RT: 5.59
 T: FTMS + p ESI Full ms [100.00-1500.00]
 m/z= 604.00000-605.00000

m/z	Intensity	Relative	Delta (ppm)	Composition
604.45135	461782.2	100.00	0.52	C ₂₇ H ₃₀ ² H ₁₅ O ₅ N ₁₀
			-2.04	C ₂₇ H ₃₂ ² H ₁₄ O ₅ N ₁₀
			3.08	C ₂₇ H ₂₈ ² H ₁₆ O ₅ N ₁₀
			-4.61	C ₂₇ H ₃₄ ² H ₁₃ O ₅ N ₁₀

Nclavipes_HDX #883 RT: 5.59 AV: 1 NL: 2.44E7
 T: FTMS + p ESI Full ms [100.00-1500.00]



Nclavipes_HDX #883 RT: 5.59 AV: 1 NL: 4.43E5
 T: FTMS + p ESI Full ms [100.00-1500.00]

