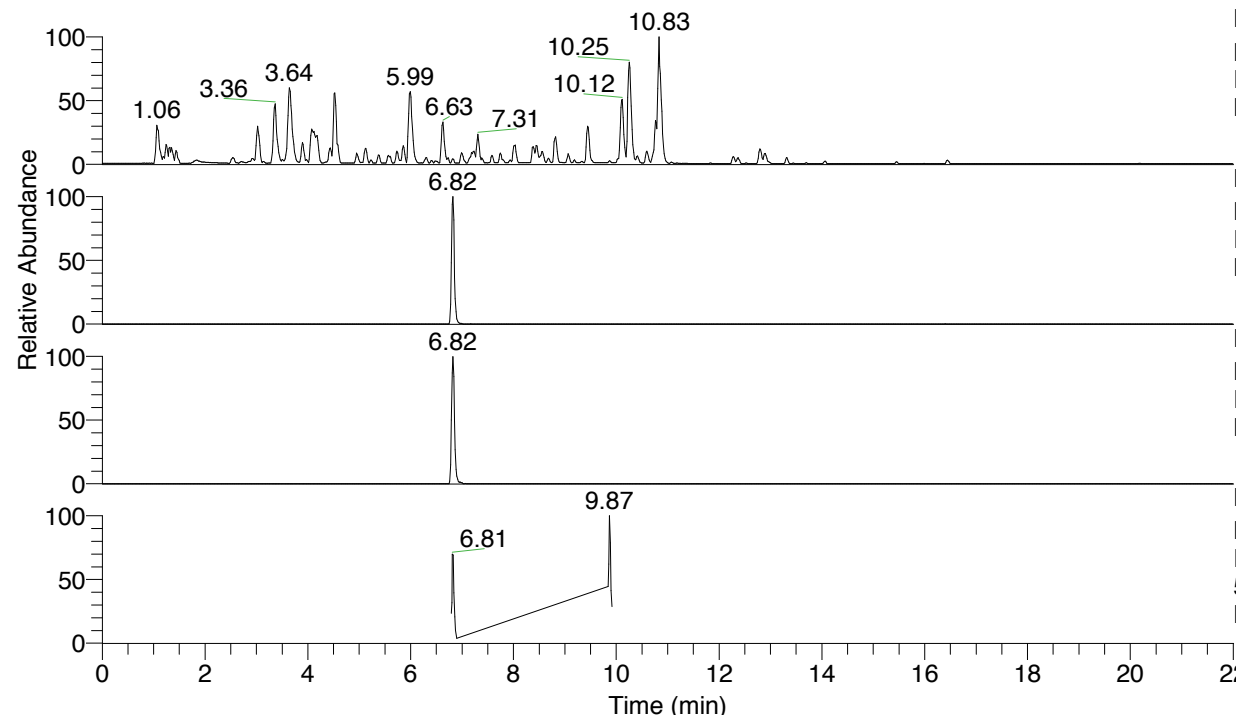


RT: 0.00 - 22.01



NL: 4.79E7
 Base Peak m/z= 100.00000-1500.00000 F:
 FTMS + p ESI Full ms [100.00-1500.00]
 MS Nclavipes

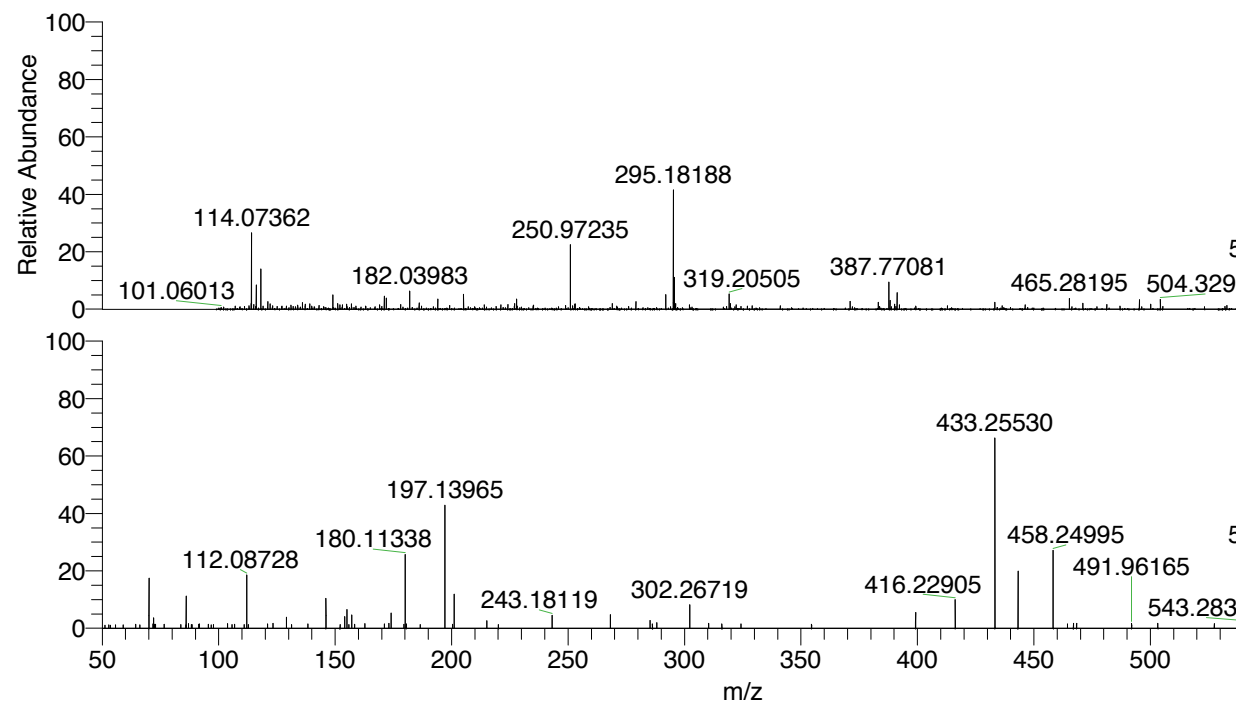
NL: 2.09E6
 Base Peak m/z= 589.35449-589.36039 F:
 FTMS + p ESI Full ms [100.00-1500.00]
 MS Nclavipes

NL: 8.79E5
 Base Peak m/z= 295.18115-295.18411 F:
 FTMS + p ESI Full ms [100.00-1500.00]
 MS Nclavipes

NL: 1.75E5
 Base Peak m/z= 50.00000-1500.00000 F:
 FTMS + p ESI d Full ms2
 589.36@hcd35.00 [50.00-620.00] MS
 Nclavipes

Nclavipes#2706-2726 RT: 6.79-6.84 AV:
 F: FTMS + p ESI d Full ms2 589.36 ...
 m/z= 50.00000-1000.00000

m/z	Intensity	Relative
70.06590	12306.5	15.98
72.08152	2442.1	3.17
86.06079	7633.5	9.91
87.05571	1148.9	1.49
103.81140	1125.8	1.46
112.08729	13957.4	18.13
112.11219	3300.9	4.29
121.04520	1045.1	1.36
123.32752	1154.1	1.50
129.13924	2661.2	3.46
146.06024	7112.5	9.24
146.16544	2990.0	3.88
152.58695	1076.1	1.40
154.13392	2844.0	3.69
154.72563	1073.6	1.39
155.11825	4472.9	5.81
157.10848	3267.0	4.24
162.78358	1154.1	1.50
173.08102	1156.9	1.50
174.05484	3634.7	4.72
180.11339	19270.8	25.03
180.56573	1058.2	1.37
197.13964	31089.5	40.38
201.06594	8080.6	10.50
215.08211	1773.5	2.30
243.18119	3101.1	4.03
268.21357	3308.5	4.30
285.23923	1903.0	2.47
286.22860	1020.2	1.33
288.09685	1340.9	1.74
302.26719	5781.6	7.51
310.33315	1178.0	1.53
316.05136	1057.9	1.37
324.21813	1088.5	1.41
351.25593	1120.3	1.46
399.20353	1466.7	1.90
399.28306	3791.6	4.92
416.22941	8183.8	10.63
433.25530	49510.0	64.31
443.23974	13642.5	17.72
458.24995	18531.4	24.07
464.41837	1059.8	1.38
467.01425	1162.9	1.51
468.34776	1190.8	1.55
491.96165	1204.1	1.56
503.19887	1175.0	1.53
527.50455	1067.6	1.39
537.28484	1274.6	1.66
543.28323	1284.7	1.67
544.61408	1110.1	1.44
554.31770	1829.0	2.38
554.72223	1238.3	1.61
555.30185	15373.2	19.97
572.32916	18496.9	24.02
589.35535	76991.1	100.00



589.35669 NL: 2.08E6
 Nclavipes#2719 RT: 6.82
 AV: 1 T: FTMS + p ESI
 Full lock ms
 [100.00-1500.00]

589.35523 NL: 8.51E4
 Nclavipes#2710-2731 RT:
 6.80-6.84 AV: 4 F: FTMS
 + p ESI d Full ms2
 589.36@hcd35.00
 [50.00-620.00]

Nclavipes#2706-2726 RT: 6.79-6.84 AV: 5

F: FTMS + p ESI d Full ms2 589.36@hcd35.00 [50.00-620.00]

m/z= 50.00000-1000.00000

m/z	Intensity	Relative
51.15570	738.2	0.96
52.77810	837.9	1.09
53.43964	724.5	0.94
55.43124	833.4	1.08
55.71459	818.9	1.06
58.58441	831.0	1.08
59.03429	812.7	1.06
64.30878	931.1	1.21
66.19779	829.4	1.08
66.22222	1015.0	1.32
69.29042	726.9	0.94
70.06590	12306.5	15.98
71.72913	1006.6	1.31
72.08152	2442.1	3.17
72.52848	950.1	1.23
72.86001	937.1	1.22
76.09799	806.1	1.05
76.59334	925.0	1.20
83.68315	905.1	1.18
85.88082	823.8	1.07
86.06079	7633.5	9.91
87.05571	1148.9	1.49
88.24187	912.2	1.18
88.54434	901.5	1.17
91.48578	969.6	1.26
91.75214	1018.7	1.32
95.62211	946.9	1.23
96.82002	833.3	1.08
97.80993	840.6	1.09
99.11872	823.1	1.07
103.81140	1125.8	1.46
105.73139	897.2	1.17
106.86763	926.9	1.20
110.89678	910.7	1.18
111.21868	890.7	1.16
112.08729	13957.4	18.13
112.11219	3300.9	4.29
112.68500	865.5	1.12
121.04520	1045.1	1.36

Nclavipes#2706-2726 RT: 6.79-6.84 AV: 5

F: FTMS + p ESI d Full ms2 589.36@hcd35.00 [50.00-620.00]

m/z= 50.00000-1000.00000

m/z	Intensity	Relative
123.32752	1154.1	1.50
129.13924	2661.2	3.46
131.33642	908.4	1.18
138.33009	1014.2	1.32
146.06024	7112.5	9.24
146.16544	2990.0	3.88
152.11768	921.1	1.20
152.58695	1076.1	1.40
154.13392	2844.0	3.69
154.43577	974.3	1.27
154.72563	1073.6	1.39
155.11825	4472.9	5.81
155.91404	934.4	1.21
157.10848	3267.0	4.24
158.32449	948.6	1.23
162.78358	1154.1	1.50
171.16072	1018.4	1.32
173.08102	1156.9	1.50
174.05484	3634.7	4.72
179.29709	909.8	1.18
179.47911	940.2	1.22
180.11339	19270.8	25.03
180.56573	1058.2	1.37
186.58849	918.9	1.19
197.13964	31089.5	40.38
200.46565	946.7	1.23
201.06594	8080.6	10.50
215.08211	1773.5	2.30
220.12883	917.8	1.19
243.18119	3101.1	4.03
268.21357	3308.5	4.30
285.23923	1903.0	2.47
286.22860	1020.2	1.33
288.09685	1340.9	1.74
302.26719	5781.6	7.51
310.33315	1178.0	1.53
316.05136	1057.9	1.37
324.21813	1088.5	1.41
351.25593	1120.3	1.46

Nclavipes#2706-2726 RT: 6.79-6.84 AV: 5

F: FTMS + p ESI d Full ms2 589.36@hcd35.00 [50.00-620.00]

m/z= 50.00000-1000.00000

m/z	Intensity	Relative
354.54142	1000.8	1.30
399.20353	1466.7	1.90
399.28306	3791.6	4.92
416.22941	8183.8	10.63
433.25530	49510.0	64.31
443.23974	13642.5	17.72
458.24995	18531.4	24.07
464.41837	1059.8	1.38
467.01425	1162.9	1.51
468.34776	1190.8	1.55
491.96165	1204.1	1.56
503.19887	1175.0	1.53
527.50455	1067.6	1.39
537.28484	1274.6	1.66
543.28323	1284.7	1.67
544.61408	1110.1	1.44
554.31770	1829.0	2.38
554.72223	1238.3	1.61
555.30185	15373.2	19.97
572.32916	18496.9	24.02
589.35535	76991.1	100.00